



UTILITY SEATING

MADE IN
BRITAIN

CIVIC RANGE



Ergonomic & economic seating

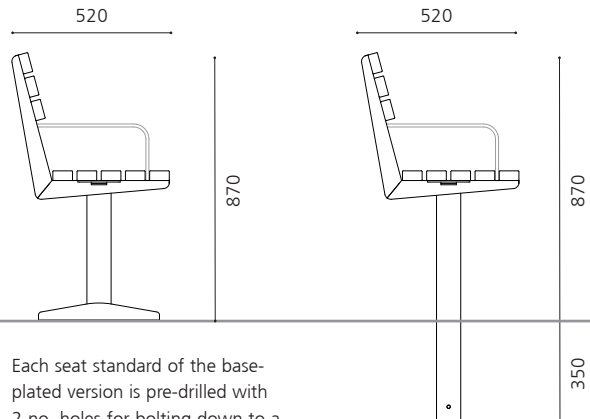
Civic has been designed around the principles of the ergonomic dimensional requirements for a seat, with neat detailing and with consideration for ease of manufacture. Seat standards and base plates are folded steel plates formed into channel sections in which slat and ground fixings respectively are tucked away, and joined by a strong box section upright post. The supports are designed with hot dip galvanising in mind, allowing the molten zinc coating to flow around the fabrication without the need for additional unsightly vent holes. Seating and backrest platforms are offered in either iroko hardwood, with the option of a supplementary UV protective finish, and in wood plastic composite (WPC), all discretely fixed from the rear. As timber spans greater distances than WPC, fewer supports are required, meaning this is the more economic option. Integral armrests can be welded to any seat standard or support strap. Civic seats are available in many different sizes and configurations and for bolt-down or in-ground fixing.



Seat stand / installation options:

Base plate version for bolt-down installation

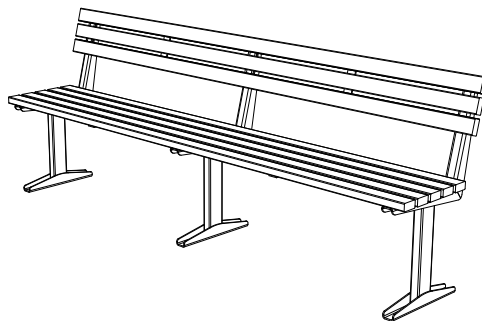
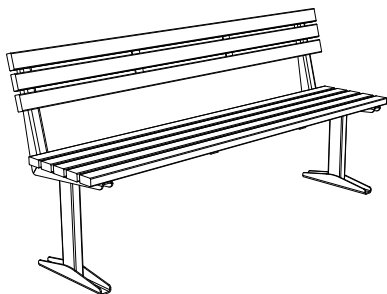
Extended post version for in-ground installation



Each seat standard of the base-plated version is pre-drilled with 2 no. holes for bolting down to a foundation block with suitable M10 ground anchors (not supplied).

CIVIC RANGE

MODEL ILLUSTRATED: **CVC 6 BASE**



MODEL ILLUSTRATED: **CVC 8 BASE**

CIVIC - TIMBER SLATS

Hot dip galvanised steel standards and straps
Base plated for bolt-down installation
Iroko timber slats, smooth planed finish

CVC 6 BASE

1800mm long, 2 seat supports, no armrests

CVC 6A BASE

1800mm long, 2 seat supports, 2 end armrests

CVC 6AC BASE

1800mm long, 2 seat supports,
2 end + 2 central armrests

CVC 8 BASE

2400mm long, 3 seat supports, no armrests

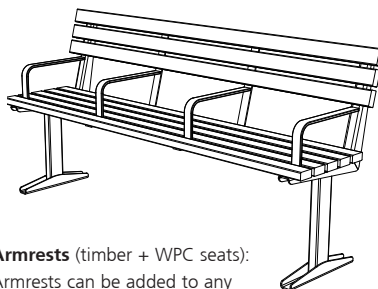
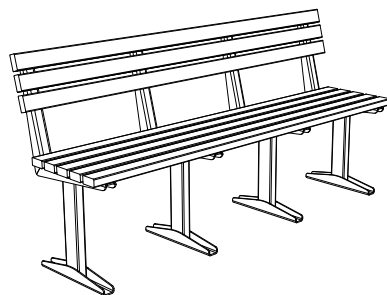
CVC 8A BASE

2400mm long, 3 seat supports, 2 end armrests

CVC 8ACM BASE

2400mm long, 3 seat supports,
2 end + 3 central armrests

MODEL ILLUSTRATED: **CVC 6 BASE WPC**



Armrests (timber + WPC seats):
Armrests can be added to any
seat standard or support strap.

CIVIC - WOOD PLASTIC COMPOSITE SLATS

Hot dip galvanised steel standards
Base plated for bolt-down installation
Wood plastic composite (WPC) slats

CVC 6 BASE WPC

1800mm long, 4 seat supports, no armrests

CVC 6A BASE WPC

1800mm long, 4 seat supports, 2 end armrests

CVC 6AC BASE WPC

1800mm long, 4 seat supports,
2 end + 2 central armrests

OPTIONS:

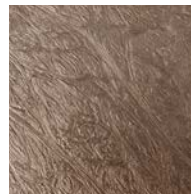
- Other arm configurations
- Seat standards in Polyester Powder Coated finish to any RAL colour reference
- Timbers with UV protective finish
- Extended post for in-ground installation

LAMBETH RANGE



Multiple configuration seating

The popular Lambeth seat has been designed to offer a wide range of seating configurations, all from a standard 3 person / 1800mm long seat. In particular, there are many DDA-compliant arm arrangement options, with selected 2- and 3-arm assemblies designed to make it easier for elderly and less-able users to manoeuvre on and off the seat from the side. The Lambeth is an ideal seating solution for local neighbourhood and urban park schemes, which demand simple styling, user-comfort and a robust construction. Seat standards and arms are cast in tough ductile iron to ensure vandal resistance and longevity, and the seat slats can be supplied in durable iroko timber or recycled plastic material. Other products within the Lambeth range include a bollard, litter bin and cycle stand.



Recycled plastic slat:
Brown

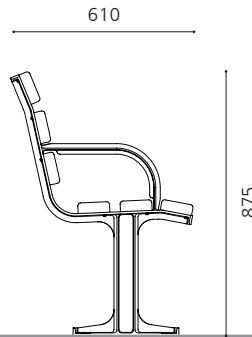
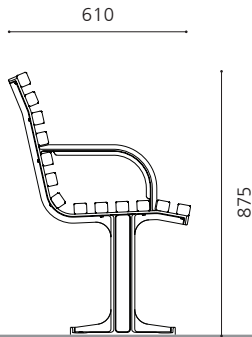


Recycled plastic slat:
Black

Installation:

Each seat standard is pre-drilled with 2no. holes for bolting the seat down to a foundation block with suitable M12 ground anchors (not supplied).

LAMBETH RANGE



LAMBETH - TIMBER SLATS

3 person seat 1800mm long
Cast ductile iron seat standards
Iroko timber slats, smooth planed finish

LAM 602 BST

2 seat standards, no arms

LAM 622 BST

2 seat standards, 2 end arms

LAM 623 BST

3 seat standards, 2 arms (1 end & 1 middle)

LAM 632 BST

2 end seat standards, 3 arms (1 end & 2 centres)

LAM 633 BST

3 seat standards, 3 arms (2 ends & 1 middle)

LAM 642 BST

2 seat standards, 4 arms (2 ends & 2 centres)

LAMBETH - RECYCLED PLASTIC SLATS

3 person seat 1800mm long
Cast ductile iron seat standards
Recycled plastic slats, in brown or black

LAM 602 BP

2 seat standards, no arms

LAM 622 BP

2 seat standards, 2 end arms

LAM 623 BP

3 seat standards, 2 arms (1 end & 1 middle)

LAM 632 BP

2 end seat standards, 3 arms (1 end & 2 centres)

LAM 633 BP

3 seat standards, 3 arms (2 ends & 1 middle)

LAM 642 BP

2 seat standards, 4 arms (2 ends & 2 centres)

OPTIONS:

- Other arm / leg configurations
- Seat standards in painted finish to any RAL colour reference
- Timbers with UV protective finish

Extended range

The characteristic arched profile of the Lambeth seat armrest is also employed on a number of other products in the family, including a bollard, cycle stand and litter bin. Please refer to the relevant product category e-brochure for full details of these products.

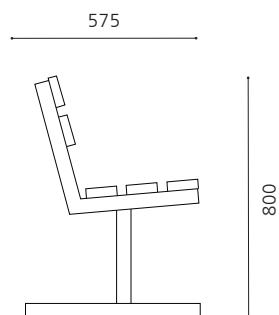


NEWSTEAD & ASHBURTON



Timber or recycled plastics slats

The rudimentary design and construction of the Newstead, and its sister product the Ashburton, provides a strong, hardwearing and economic seating solution, ideal for placement on the street, in parks and open spaces, and school grounds. The seat supports are square hollow section steel tube, hot dipped galvanised as standard, with the option of supplementary polyester powder coating if a coloured finish is required. Newstead slats are in iroko hardwood, fixed to the steel supports either with visible coach bolts or discrete rear fixings. To maintain a longer lasting rich colouration to the timber a UV protective finish can be factory-applied prior to delivery to site. The Ashburton seat simply replaces the hardwood slats with recycled plastic slats, in a choice of brown or black.



Installation:

Each seat standard is pre-drilled with 2no. holes for bolting the seat down to a foundation block with suitable M10 ground anchors (not supplied).

NEWSTEAD

Hot dip galvanised steel standards
Iroko timber slats, smooth planed

NS 6

3 person seat, 1800 mm long

OPTIONS:

- Discrete timber fixings
- Timbers with UV protective finish
- Armrests, all-steel
- Seat supports in PPC to any RAL
- Extended post supports for in-ground installation

ASHBURTON

Galvanised steel supports with
Recycled plastic slats, brown or black

ASH 6

3 person seat, 1800 mm long

OPTIONS:

- Armrests, all-steel
- Seat supports in polyester powder coated finish
- Extended post supports for in ground installation



NEWSTEAD BESPOKE VARIATIONS

Case study: Chobham Manor

Chobham Manor is a new neighbourhood at Queen Elizabeth Park in Stratford, east London. Sited close to Lea Valley Velopark, where so many Team GB cyclists triumphed at London 2012 - new streets have been named using cycling terminology, including Peloton Avenue and Keirin Road. Chobham Manor Phase 1 contains 1500 square metres of publicly accessible open space, including a neighbourhood play area for young children. Bounded by a mixture of garden-style walling and low level steel railings, together with extensive new perimeter tree planting, the central space is surfaced with a synthetic turf to provide an all-year-round play facility. The chosen seating for the scheme was Furnitubes' municipal-styled Newstead. Project architects MUF put their own unique twist on the designs, including some exceptionally high backrests that straddle the boundary fence to provide low level child-friendly seating on the play area side. On the street, the seating is more conventional, arranged in linear groups to encourage social interaction and placed to take advantage of attractive vistas across the development.



UTILITY SEATING



View or download other product e-brochures at the following link:

www.furnitubes.com/brochures



© Furnitubes

 **Furnitubes®**

3rd Floor, Meridian House, Royal Hill, Greenwich

LONDON SE10 8RD

T: +44 (0)20 8378 3200

sales@furnitubes.com

www.furnitubes.com