



QUALITY SPACE HEATERS



Installation & Control Guide for SL Twinzone Radiant Heaters for SL Wireless Controllers

Models

HE6351SL 1.5kW, HE6343SL 3kW

All electrical appliances produced by the Company are guaranteed for one year against faulty materials or workmanship. This applies only if the appliance has been used for purposes in accordance with the instructions provided and has not been connected to an unsuitable electricity supply, or subject to misuse, neglect, damage or modified or repaired by any person not authorised by us. This guarantee is offered to you as an extra benefit and does not affect your legal rights.

The correct electricity supply voltage is shown on the rating label attached to the appliance.

Reasonable care has been taken to ensure that this guide is accurate at the time of printing. In the interest of progress the Company reserve the right to vary specifications from time to time without notice.

Important—please read

The silica sheath of the heating elements should not be touched by hand, otherwise permanent marks (devitrification) will occur during heating. **WHEN ASSEMBLING HOLD THE ELEMENTS BY THE CERAMIC BUSHES AND OBSERVE THE CLEANING INSTRUCTIONS AFTERWARDS.**

Overview

Please read this guide carefully and retain for future use and maintenance.

This appliance has been designed and manufactured to the highest international standards, however, care must be taken for optimal results and safety. This appliance also meets the requirements of EU Directive 2004/106/EC for EMC and 2009/125/EC Directive.

Safety & Care

The appliance is not intended for use by persons (including children) with reduced physical, sensory or mental capabilities or lack of experience and knowledge unless they have been given supervision or instruction concerning use of the appliance by a person responsible for their safety.

Warning

- Do NOT site the appliance in a corner.
- Do NOT use the appliance in workshops or rooms where excessive dust is generated or present.
- Do NOT touch outlet grille when the appliance is in use.
- Do NOT cover or restrict any aperture of the appliance when in use.
- Do NOT use the appliance if damaged.
- Do NOT leave the appliance unattended.

Cleaning

Always disconnect the heater from the mains before cleaning. The heater should not require any maintenance, but it is strongly advised that it is kept clean. An occasional wipe over with a soft cloth is all that should be necessary.

- Do NOT use metal or furniture polish on any part of the heater.
- Do NOT touch the heater with wet hands or in any way bring water into contact with it.

If the supply cord is damaged, it must be replaced by the manufacturer or its service agent or a similarly qualified person in order to avoid a hazard.

If Your Heater Does Not Work

- Check that power is available to the heater. The LED light on the SL receiver should be illuminated
 - Check that the fuse in the spur unit has not blown. This can be done by replacing the fuse with another suitable fuse.
 - Check if the heater is paired with the SL controller
- Should none of the above remedies work, then telephone the helpline number shown in these instructions (UK ONLY). Do not attempt to repair the heater.

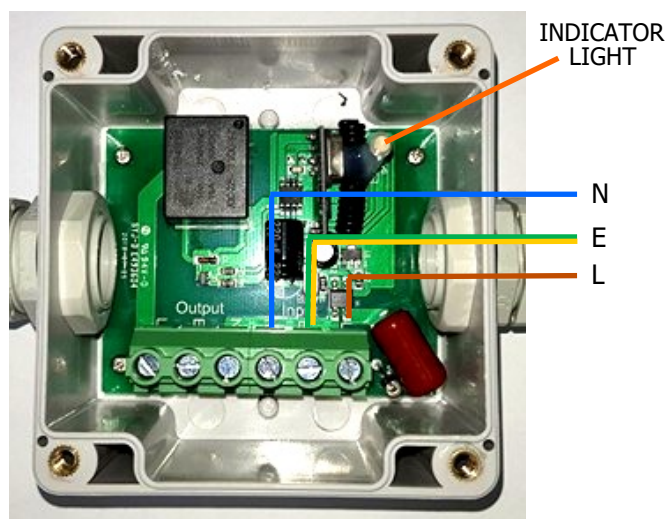
Connection to the Main Supply

Electrical installation should be carried out by a competent installer, preferably registered with NICEIC in accordance with the 17th edition of the IEE Wiring Regulations, (BS.7671), and any relevant Local Authority Bye-Laws. This heater is fitted with a 3-core mains supply cable and must be permanently connected to the electricity supply via a double pole switch having 3mm gap on each pole. **There are no exceptions.** A switched Fused Connection unit to BS.1363, Part 4 is a recommended mains supply connection accessory to ensure compliance with safety requirements applicable to fixed-wiring installation.

Note: When switched on for the first time the appliance may emit a slight smell.

WARNING: This appliance must be earthed.

When refitting the lid of the receiver box, care must be taken to align the light pipe on the lid with the indicator light.



Assembly

The Twin-Zone heater is designed to provide widespread warmth (broad beam) or a more concentrated beam of heat over a localised area (narrow beam), and the selection of either is made by adjusting the position of the element. This is determined by ensuring that the ceramic blocks supporting the silica tubing are mounted into the heater body in the correct position. Long end of ceramic blocks downwards will give narrow beam and short end downwards will give broad beam. (See Fig 2).

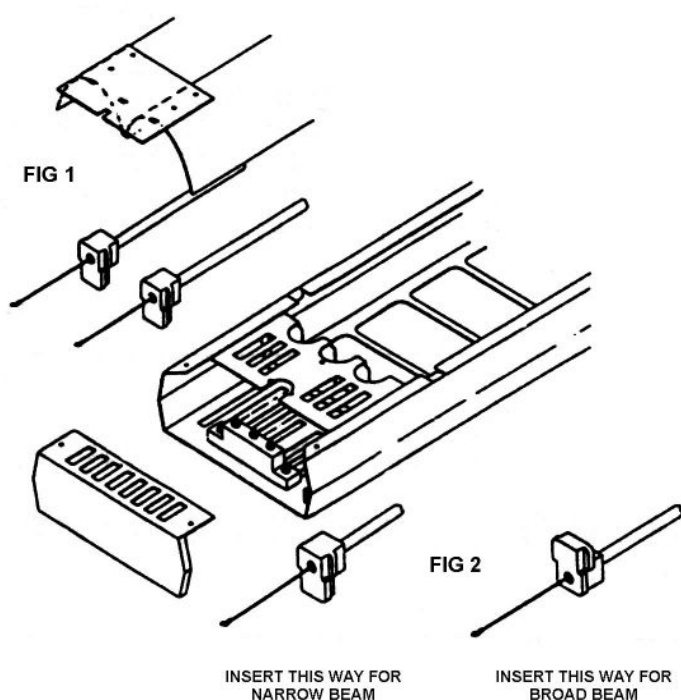
Assembly

The heater is supplied with the elements fitted in the broad beam position and connected ready for installation.

To change the beam width to the narrow setting

Remove the terminal box covers.
Remove the reflector from the body of the heater.
Disconnect the element tails from the terminal blocks.
Holding the elements by the ceramic bushes, lift the element out of the retaining slots in the body.
Rotate the ceramic blocks into the narrow beam position (long end downward, as Fig. 2) and replace.
The heater can now be reassembled in the reverse order.

ENSURE THAT THE CERAMIC BLOCKS ARE ALL INSERTED INTO THE BODY IN THE SAME OFFSET POSITION. LONG END DOWNWARDS FOR NARROW BEAM.



Suspension

Mounting brackets for suspension purposes are supplied with each heater. See diagrams for alternative methods. Provision is made for mounting by 20 mm conduit. Where the mounting brackets are joined at the swivel point, the M6 shakeproof washer, supplied in the mounting pack, should be used.

Angled

The diagram below illustrates a pair of heaters, which should be adjusted to the narrow beam position, suspended from the ceiling. Two heaters can be mounted at 45° to the vertical, thus giving wider radiation from a single point and saving extra wiring.

Wall Mounting

The heater can be wall mounted, using the brackets shown.

A safety guard, catalogue number HE6350, is available if required for particular applications.

Element Replacement

A complete set of replacement elements (element spiral assembled in silica tube) is available for all heaters. When installing replacement elements the cleaning instructions given previously should be observed.

Spare element for HE6343SL

Cat No: HE6371 1.5 kW Silica sheathed element.

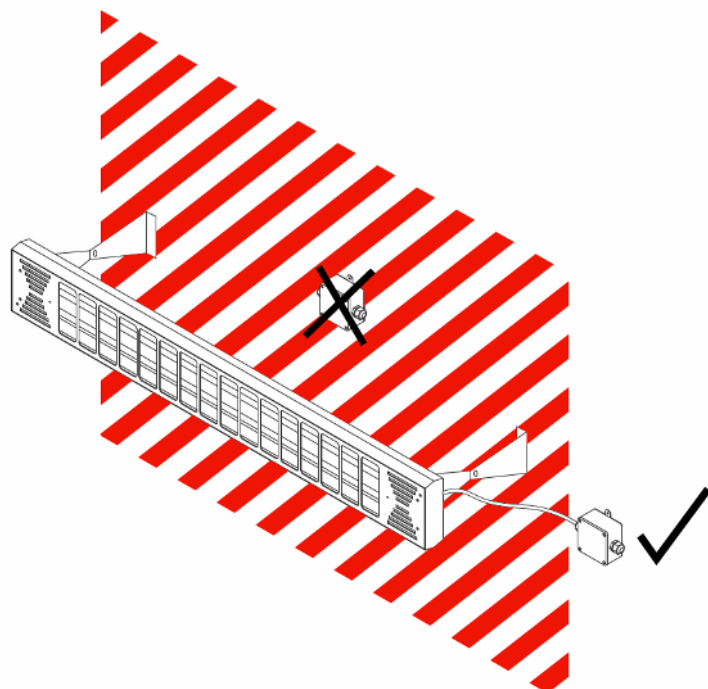
Spare element for HE6351SL

Cat No: HE6375 2 x 0.75 kW Silica sheathed elements.

CAT No	Overall Length mm A	FIXING CENTRES mm B	Weight kg
HE6343SL	1170	1070	3
HE6351SL	660	570	1.8

SL Receiver Installation

The heater is supplied with SL wireless receiver pre wired. The cable length is approximately 0.9m. The controller should be screwed to the wall with 2x number 4 or 5 screws and suitable wall plugs. Care should be taken when installing the receiver. It must not be positioned above, behind or below the heater. Ideal position is on the side, minimum 250mm from the heater. When the heater is suspended from the ceiling, the SL receiver should be installed on the ceiling as far as possible from the heater to avoid damaging the electronic components when connecting mains cable to the receiver. If the cable between the heater and the SL receiver needs replacing or extending, the same 2.5mm high temperature flexible cable must be use.



Operation

When the appliance is connected to the mains supply, the LED indicator will light up green, showing that the power is available to the unit.

When the heat output has been enabled by a wireless controller, the LED indicator light will turn red.

This heater can only be used when connected to an SL wireless controller. Each SL controller can control any number of heaters providing they are within the RF range.

Please refer to the SL controller installation and control guide for full operational details.

CUSTOMER HELPLINE

Should you need any advice on the use of your new Consort product, please contact our Helpline:

Consort Equipment Products Limited

Thornton Industrial Estate, Milford Haven, Pembrokeshire, SA73 2RT

Tel: 01646 692172 Fax: 01646 695195

Email: technical@consortepl.com Web: www.consortepl.com

Operation hours: Mon to Thu 8.30am to 4.30pm | Fri 8.30am to 3.30pm

BS EN ISO 9001 Registered Company No FM12671