



ALTA 3000 FR Series ACCESS PANELS



For all bespoke requirements, our technical team will assist you to determine the correct specification and dimensions for your project.

+44(0) 1827 719 051
technical@profabaccess.com

Fire rated, lockable 'loft hatch' ceiling access panel designed to provide access between 50 mm wide timber truss, joisted plasterboard or plaster ceilings, where access to the loft space is required.

Profab Access' ALTA 3000 FR Series range of 'loft hatch' metal ceiling access panels are designed and manufactured to provide quick and easy installation with a discreet appearance when finished.

» BENEFITS

- Fire rated up to 60 minutes
- Clean, discreet design with flush metal door
- Fast and simple to install, lockable
- Fully adjustable hinges for ease of installation and fit
- Rubber, compressible draught seals to all sides
- Etch primed for decorating on site, to match adjacent finishes
- Single door (SD) configuration
- Fully recyclable at end of life



» TYPICAL DOOR CONFIGURATIONS

Construction

- Available from stock in sizes 631 x 542 mm and 746 x 542 mm
- 1.2 mm frame with door rebate and 0.9 mm door in electro-galvanised mild steel
- Fully welded rigid frame holds a flush metal door through adjustable hinges to one side
- Adjustable hinges maintain a 2 mm gap between the door and the frame
- Rubber foam, compressible draught seals to all sides
- Single door (SD) configuration only
- Door lined with foil backed mineral wool insulation
- Picture frame (PF) profile
- Lockable with budget lock (BL) – T-bar key included and supplied with white plastic bung
- Door opens downwards towards the user
- Removable door during installation or if damage occurs
- Fully powder coated matt RAL 9010, suitable for finishing on site
- CNC manufactured in the UK to ISO 9001:2015 and 14001:2015

Performance

- One hour fire resistance test
- Fire tested to BS EN 476 part 22: 1987
- Fire rated up to 60 minutes for a single door (SD) 800 mm x 800 mm
- Fire integrity criteria maintained for 90 minutes
- Test number 146556
- 23 dB acoustic shielded as standard
- All panels are for internal use and only in areas of normal humidity

Options

- Picture frame (PF) to suit finishing requirements
- Security lock (SL) option – key included with chrome escutcheon to door face
- Other RAL paint colours and textures available
- Only limited modifications are available with this product



SD: SINGLE DOOR
BF: BEADED FRAME
BL: BUDGET LOCK

SD: SINGLE DOOR
PF: PICTURE FRAME
BL: BUDGET LOCK



» STOCK SIZES AND WEIGHTS

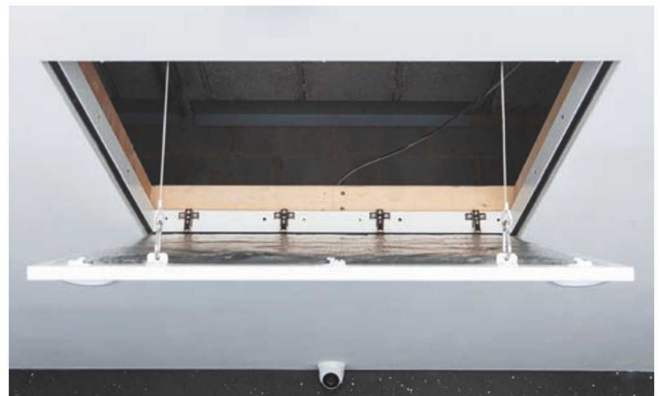
Our ALTA 3000 FR Series 'loft hatch' access panels are available in sizes for a single door (SD):

Dimension X (mm)	Dimension Y (mm)	Weight (Kgs)
631	542	8.5
746	542	9.8

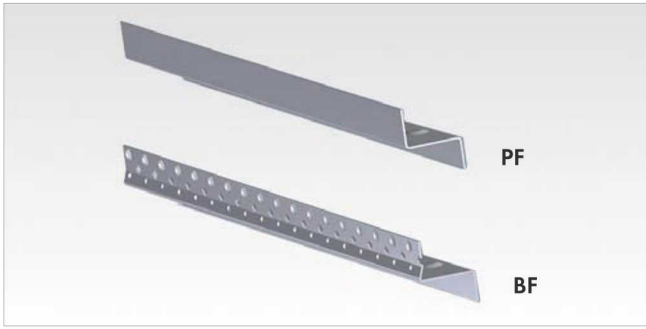
Size Specification

- All dimensions are in mm
- All doors hinge along dimension Y
- All panels are single doors (SD)
- X and Y dimensions are outside rear frame
- Overall frame depth is 80 mm
- Structural opening required for installation is (X+5mm) x (Y+5mm)
- Clear available access when installed with door in the open position is (X-65mm) x (Y-35mm)

All of our 'loft hatch' access panels are designed and manufactured to order in our UK factory, to meet your individual project requirements.



» FRAME PROFILES



Choice of frame profiles to suit application:

PF: PICTURE FRAME

A visible, flush faced frame ideal for ceilings where the panel is being installed for retro fitting and within finished areas

BF: BEADED FRAME

A simulated dry wall edge bead profile ideal for ceilings where the panel is being installed prior to any tape and jointing or skim-coat plastering.

» MULTI-POINT LOCKING OPTIONS



BL: BUDGET LOCK

Operated with an 8 mm T-bar key to unlatch and pull the door leaf open. Locking assembly engages horizontally in one direction.

SL: SECURITY LOCK

A single point locking mechanism with a quarter-turn camlock operated by a castellated key.

» INSTALLATION

Apertures should ideally be formed between the timber trusses and joists if at 600 mm centres, with cross-trimmers fixed to suit the selected panel. To maintain the 1 hour fire rating, timber joists must be lined with 9.5 mm plasterboard before fitting the panel. Suitable frame packing should be used at fixing points to ensure the frame remains square.

Loft ladder installations are possible with this product, please contact technical@profabaccess.com for further advice.

» OPERATION

When installation is not combined with a loft ladder, safe and suitable steps should be taken to comfortably reach the key operated 'loft hatch' door.



For more information about our full range of non-fire rated and third party CERTIFIRE fire rated access panels and riser doors visit:

www.profabaccess.com

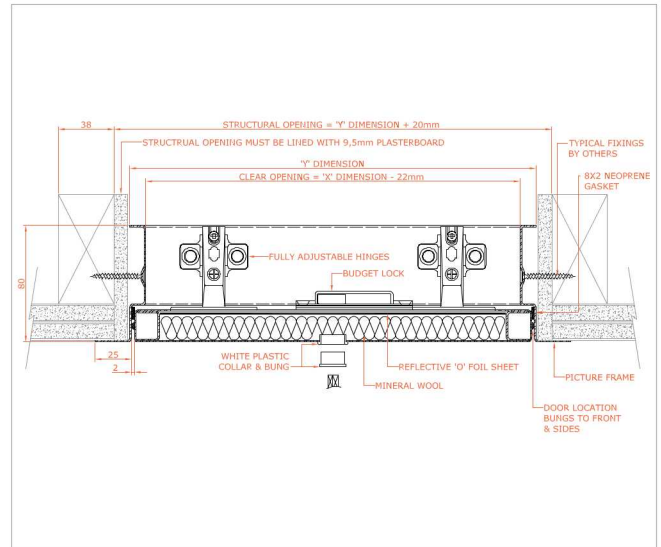
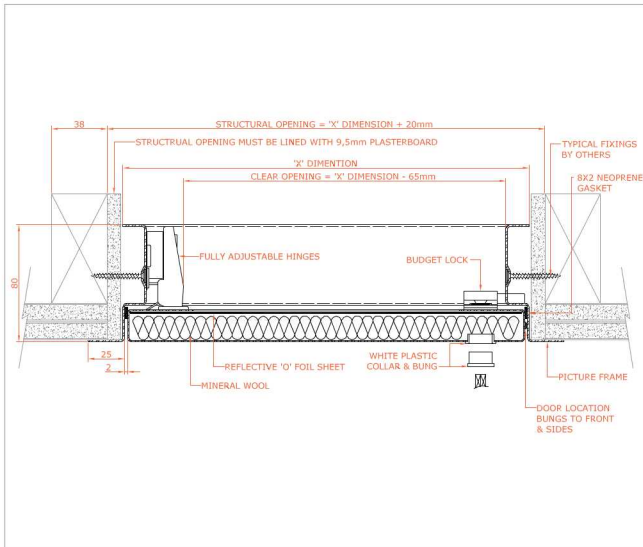
Our in-house manufacturing enables us to offer full flexibility in product design for projects that need to meet specific design criteria



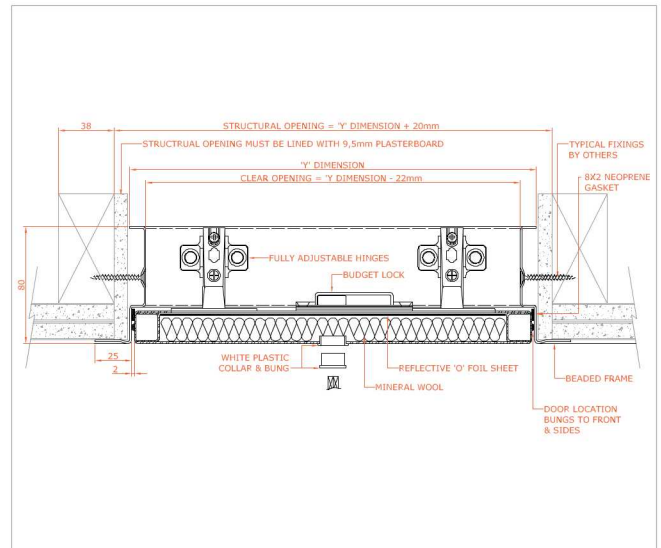
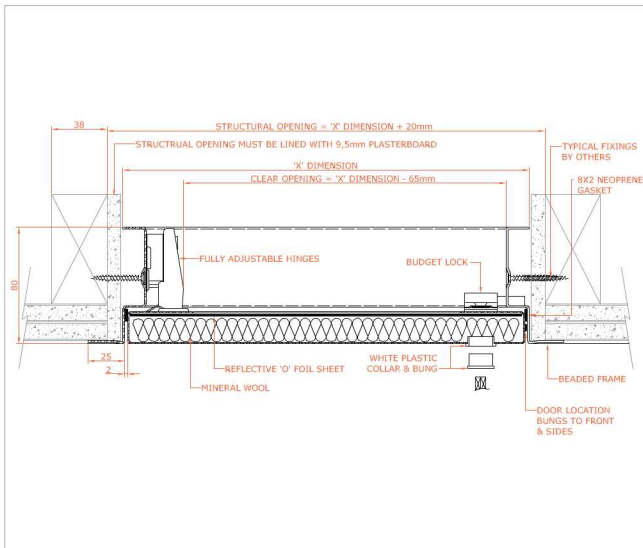
The Profab Access ALTA 3000 FR Series range of ceiling access panels is available to download now as BIM objects for use in your current and future projects



CAD DRAWINGS



1 hour fire rated, picture frame, metal door, budget lock, single door 3000-1FR-PF-MD-BL-SD



1 hour fire rated, beaded frame, metal door, budget lock, single door 3000-1FR-BF-MD-BL-SD

CAD files for all product variants are available – please contact: technical@profabaccess.com

All of our digital resources can be downloaded from: www.profabaccess.com

Profab Access reserve the right to amend any of our published information and specifications deemed necessary as part of our continuous product development and improvement policy, without prior notice.

CONTACT US

Sales Enquiries

+44(0) 1827 718 222

sales@profabaccess.com

www.profabaccess.com

Technical Enquiries

+44(0) 1827 719 051

technical@profabaccess.com



Riversdale House
Units C-D Riversdale Road
Carlyon Road Industrial Estate
Atherstone
Warwickshire CV9 1FA
United Kingdom

: [profab-access-ltd](https://www.linkedin.com/company/profab-access-ltd)

: [@accesspanels](https://twitter.com/@accesspanels)

: [profabaccesspanels](https://www.facebook.com/profabaccesspanels)

: profabaccess.com



FS668263

EMS668264

