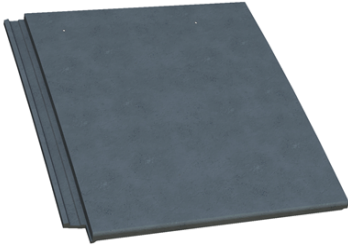


SL8 KEY INFORMATION



Overall Length	420mm
Hanging Length	396mm
Overall Width	390mm
Cover Width	362mm
Mass (approx.)	5.4kg

COLOURS
Grey
Brown
Red

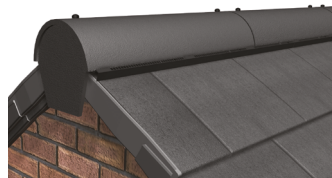
	PITCH	BATTEN SPACING	HEADLAP	TILES PER M ²	BATTEN PER M ²	MASS PER M ²	NAIL SIZE
SL8	17.5°-22.5°	320mm	100mm	8.63/m ²	3.13lm	46.62kg	45mm x 3.35mm
	22.5°-75°	345mm max	75mm min	8.01/m ²	2.90lm	43.24kg	
		320mm min	100mm max	8.63/m ²	3.13lm	46.62kg	

VERGE SYSTEM



Format: Individual Units
 Coverage: 3.2m - 3.4m
 Left and Right hand packs available.
 Starter packs include eaves unit & foam
 10 units per continuation pack

RIDGE SYSTEM



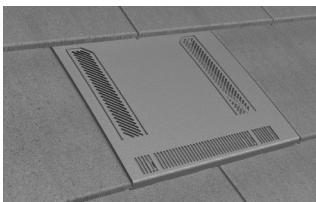
Coverage: 6m Pack
 Use with: Half Round or Uni Angle Ridge (NH)
 5000mm²/linear metre free vent area
 Pitch limits: 17.5° - 55°

TILE CLIPS



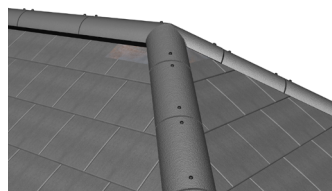
Packs of 100
 Tile to Tile Clip.
 Made from plastic

VENT TILES



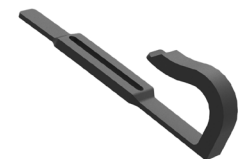
Air Vent - Vent Tile Only
 Soil Vent - Vent Tile, 160mm flexi pipe
 12275mm² Free Vent Area
 Pitch Limits: 17.5° - 55°

HIP SYSTEM



Coverage: 6m Pack
 Use with: Third Round or Uni Angle Hips (NH)
 Not Ventilated
 Pitch Limits: 17.5° - 55°

PERIMETER CLIPS



Packs of 50
 Nails to batten through tile
 Comes with dry verge packs
 Made from plastic

SL8 PRODUCT CODES

TILES & FITTINGS

Description	Product Code
SL8 Tile Pkd Full Pallet	BUZ/7918/SL8E/--
SL8 Tile Pkd Half Pallet	BUZ/7918/S8EH/--

SUITABLE RIDGE/HIP TILES

Description	Product Code
Ridge Half Round (450mm)	BUZ/7935/0516/--
Ridge Half Round Nailhole (450mm)	BUZ/7935/D516/--
Ridge Half Round Block End (450mm)	BUZ/7940/D524/--
Ridge Universal Angle (450mm)	BUZ/7935/U516/--
Ridge Universal Angle Nailhole (450mm)	BUZ/7935/UD16/--
Ridge Uni Angle Block End (450mm)	BUZ/7940/U524/--
Ridge Half Round Mono (450mm)	BUZ/7940/0300/--
Ridge HR Mono Block End LH (450mm)	BUZ/7940/0324/--
Ridge HR Mono Block End RH (450mm)	BUZ/7940/0325/--
Ridge Scrolltop Half Round (450mm)	BUZ/7940/HR30/--
Ridge Scrolltop HR Block End (450mm)	BUZ/7940/HR29/--
Ridge Half Round Baby (300mm)	BUZ/7940/0020/--
Ridge Angle Baby (300mm)	BUZ/7940/0019/--
Hip Third Round (450mm)	BUZ/7935/0566/--
Hip Third Round Nailhole (450mm)	BUZ/7935/D566/--
Hip Third Round Block End (450mm)	BUZ/7940/D526/--
Hip Universal Angle (450mm)	BUZ/7935/U566/--
Hip Universal Angle Nailhole (450mm)	BUZ/7935/UD66/--
Hip Uni Angle Block End (450mm)	BUZ/7940/U526/--

ANCILLARY PRODUCTS

Description	Product Code
SL8 Verge Pk LH (10 units)	BUZ/7956/SLVL/--
SL8 Verge Pk RH (10 units)	BUZ/7956/SLVR/--
SL8 Verge Starter & Ridge Pk	BUZ/7956/SLVS/--
SL8/GM/MS Vented Ridge Pk (6m)	BUZ/7951/GMT5/--
Vented HR Monoridge Pk (6m)	BUZ/7951/G6M5/--
SL8/Gemini/Minislate Hip Pk (6m)	BUZ/7951/DH66/00
SL8 Air Vent Kit	BUZ/7956/SLIV/--
SL8 Soil Vent Kit (inc. flexipipe)	BUZ/7956/SLSV/--
Eaves Vent Starter Pk (6m)	BUZ/7955/U5E5/00
Eaves Vent Starter Pk (6m)	BUZ/7955/U5E7/00
SL8 Tile Clips (Pk 100)	BUZ/7956/S852/00
SL8/PAN8 Perimeter Clips (Pk 50)	BUZ/7956/VC53/--
SL8 Verge Bulk Pk LH (168 units)	BUZ/7956/SVBL/--
SL8 Verge Bulk Pk RH (168 units)	BUZ/7956/SVBR/--
SL8 Verge Starter Pk (20 units EH)	BUZ/7956/SVSB/--
SL8 Air Vent Bulk Pk (10 vents)	BUZ/7955/SAVB/--
SL8 Soil Vent Bulk Pk (10 vents)	BUZ/7955/SSVB/--
SL8 Tile Clip Bulk Pk (Pk 1000)	BUZ/7956/S654/00

PLAIN TILES (FOR VERTICAL TILING)

Description	Product Code
Plain Tile	BUZ/7907/P501/--
Plain Tile & Half	BUZ/7945/P507/--
Plain Tile Eaves & Tops	BUZ/7945/P506/--
Beavertail Tile	BUZ/7930/BT01/--
Beavertail RH Tile & Half	BUZ/7945/BT08/--
Beavertail LH Tile & Half	BUZ/7945/BT07/--
Plain Tile Bonnet Hip	BUZ/7950/PT13/--
90 Deg LH Ext Angle	BUZ/7950/PT11/--
90 Deg RH Ext Angle	BUZ/7950/PT12/--
135 Deg LH Ext Angle	BUZ/7950/PT31/--
135 Deg RH Ext Angle	BUZ/7950/PT32/--

