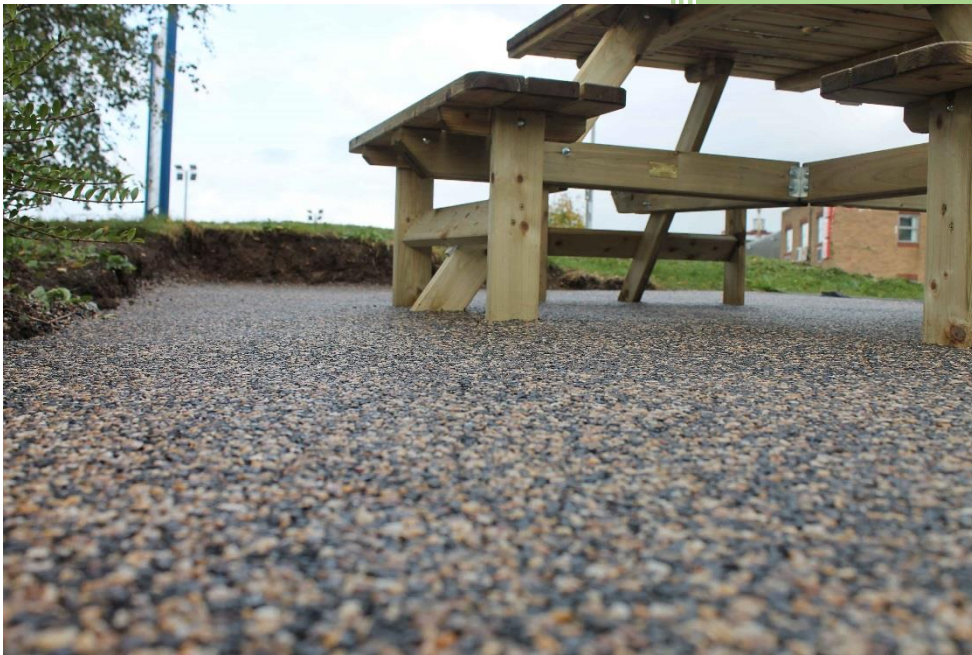


# ADDAFLEX R O&M MANUAL



Addagrip Terraco Limited  
Bell Lane Industrial Estate,  
Uckfield, East Sussex TN22 1QL  
Tel: 01825 761333  
E-mail: [sales@addagrip.co.uk](mailto:sales@addagrip.co.uk)

**INSTALLATION INFO**

Installation Date: \_\_\_\_ / \_\_\_\_ / \_\_\_\_\_

Installer: \_\_\_\_\_

Contact: \_\_\_\_\_

Address: \_\_\_\_\_

\_\_\_\_\_

Town: \_\_\_\_\_

County: \_\_\_\_\_

Postcode: \_\_\_\_\_

Tel: \_\_\_\_\_

Email: \_\_\_\_\_

Notes:

## **ADDAFLEX R MAINTENANCE & CLEANING**

### **ROUTINE MAINTENANCE & GENERAL CLEANING**

General cleaning of the ADDAFLEX R surface can be carried out by cold pressure washing up to a maximum 150 bar rating to remove dirt and grime. The water should be applied using a fan type lance which should be kept 200mm above the installed ADDAFLEX R. Care should be taken however to prevent damage to the surface with excessive water pressure.

If the surface has been contaminated with chewing gum it is best removed by using a biodegradable remover. Oil stains should be treated and removed as soon as possible using a biodegradable oil stain remover. Rubber tyre marks can generally be removed by simply using the Addagrip MC surface cleaning machine.

Rainwater drainage can be maintained provided that a maintenance schedule, including regular suction cleaning and sweeping, is implemented using a suitable wet and dry vacuum.

### **VEGETATION**

The ADDAFLEX R surface should be regularly cleared of leaves etc. to prevent possible tanning staining and moss growth, most vegetation can be easily removed using jet wash. However, some airborne weed growth may require treatment with a suitable weed killer, an initial small test area should be carried out to confirm suitability. Tannin marks can be removed using diluted sodium hypochlorite.

### **NORMAL/ABNORMAL USE**

The ADDAFLEX R surface has been designed for normal pedestrian use, therefore protection should be provided wherever possible against abnormal usage. Abnormal usage applies to heavy objects such as skips, these should not be dragged across the surface and any point loading must use padding. The ADDAFLEX R finish must be protected in this instance to avoid any impact damage, staining etc.

### **DAMAGE REPAIR**

Damaged surfaces should be repaired as soon as possible. Please contact the contractor who installed the surface.

### **SNOW, ICE AND FROST**

Areas subject to snow, ice and frost can be treated using Rock Salt, however, this may be harmful to plants and can damage surrounding metal or concrete surfaces. Excessive snow should be shoveled away using a plastic snow shovel, taking care not to damage the ADDAFLEX R Resin Bound surfacing. Do not use a wire brush ice remover.

### **SEASONAL FIXTURES**

When using ADDAFLEX resin areas covered with seasonal fixtures such as flower pots will see a difference in colour when moved. Structurally will perform as normal. This does not affect ADDAFLEX UV resin.