

# Timber Frame Wall Solutions for Part L and Scottish Technical Standard 6

For additional information and technical enquiries  
please contact:

DuPont (UK) Limited  
Hither Green Estate  
Clevedon, North Somerset  
BS21 6XU

Tel.: 01275 879 770

Fax: 01275 879 773 (sales)

Fax: 01275 879 033 (technical)

E-mail: [tyvek.construction@dupont.com](mailto:tyvek.construction@dupont.com)

[www.tyvek.co.uk](http://www.tyvek.co.uk)

Recommendations as to methods, use of materials and construction details are based on the experience and current knowledge of DuPont and are given in good faith as a general guide to designers, contractors and manufacturers. This information is not intended to substitute for any testings you may need to conduct to determine for yourself the suitability of our products for your particular purposes. This information may be subject to revision as new knowledge and experience becomes available. Since we cannot anticipate all variations in actual end-use conditions, DuPont makes no warranties and assumes no liability in connection with any use of this information. Nothing in this publication is to be considered as a licence to operate under a recommendation to infringe any patent right.

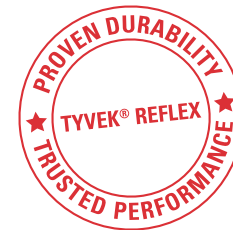


*The miracles of science™*



DuPont™ Tyvek® Reflex

## Searching for the right Reflective Breather Membrane?



**Tyvek.**

Performance beyond protection



DuPont™ Tyvek® Reflex

## Timber Frame Wall Solutions for Part L and Scottish Technical Standard 6

### 1- U-Values of entire wall construction achieved with 89 mm STUD (and 89 mm fibrous insulation)

Insulation	$\lambda$ (W/m K)	U-value (W/m² K)		
		Standard Membrane	Tyvek® Reflex	Tyvek® Reflex + DuPont™ AirGuard®
Mineral Roll	0.044	0.45	0.39	0.32
Mineral Batt	0.038	0.41	0.37	0.29
	0.037	0.42	0.35	0.30
	0.035	0.40	0.34	0.29
	0.032	0.39	0.32	0.28
PIR	0.023*	0.34	0.30	n/a

\* PIR insulation 70 mm thick and foil faced to leave 20 mm service void

### 2- U-Values of entire wall construction achieved with 140 mm STUD (and 140 mm fibrous insulation)

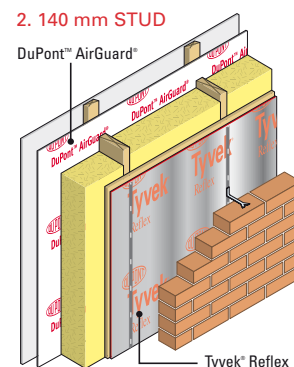
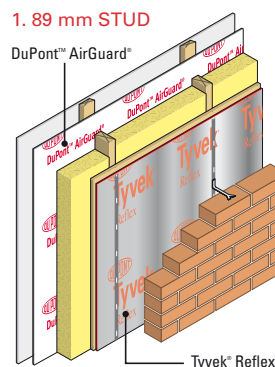
Insulation	$\lambda$ (W/m K)	U-value (W/m² K)		
		Standard Membrane	Tyvek® Reflex	Tyvek® Reflex + DuPont™ AirGuard®
Mineral Roll	0.044	0.32	0.29	0.25
Mineral Batt	0.038	0.30	0.27	0.23
	0.037	0.29	0.27	0.23
	0.035	0.29	0.26	0.22
	0.032	0.27	0.25	0.22
PIR	0.023*	0.24	0.21	n/a

\* PIR insulation 120 mm thick and foil faced to leave 20 mm service void

■ BEST   ■ GOOD   ■ NORMAL   ■ POOR

- 1- **Trusted performance** and **proven durability**.
- 2- The first **Reflective Breather Membrane** for **thermal management**  
- successfully installed in the UK since 2002
- 3- Suitable in timber frame walls as well as metal frames, masonry and internal insulation upgrades
- 4- Save money with an **Airtight** and more **Energy Efficient** construction for the lifetime of the building
- 5- Fully **BBA certified** (No 90/2548)  
- helps to meet requirements of Part L in England and Wales and of Scottish Technical Standard 6
- 6- Approved by UKTFA  
- covers Compliance with Codes & Standards

All insulating breather membranes are not the same!



Member of:      Member of:

