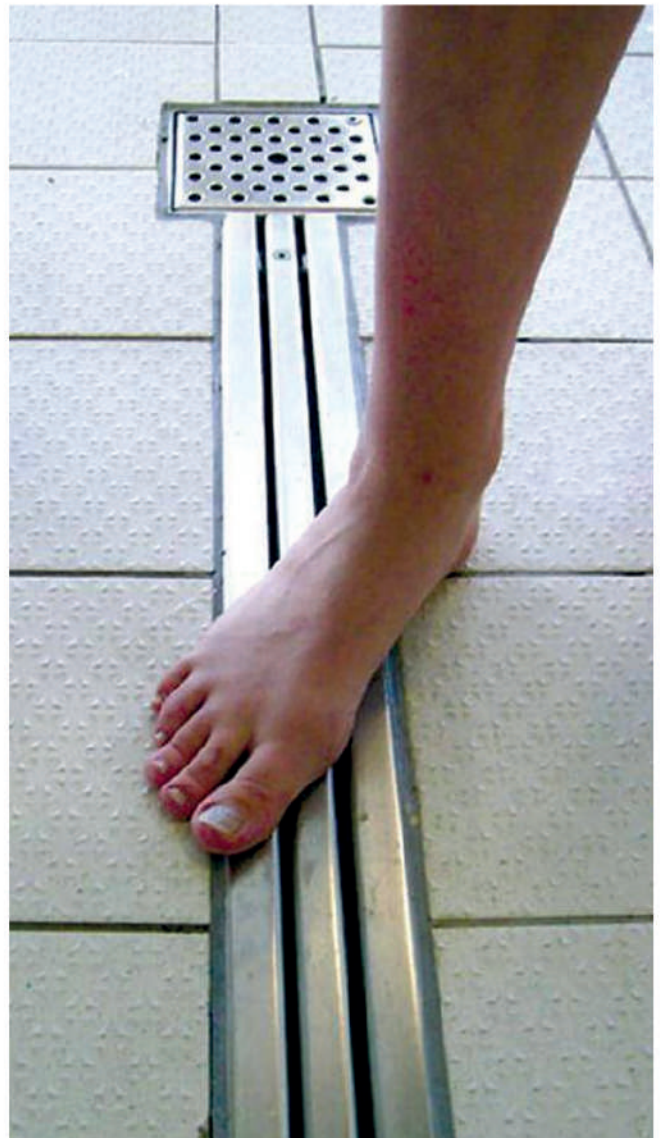


Client: The Ashburton Learning Village

Project: Interior Building Drainage

The Ashburton Learning Village is a flagship development for the Government's initiative for Public-Private Funding Partnerships. The facility has been noted for its innovative design and energy efficient features and has been praised by the former RIBA President George Ferguson who claimed that it "sets a new design standard for schools". It has since become a contender for this years Biennale Award for Best New Building.

The contribution of Component Developments was a number of drainage channels situated in shower areas. Supplied to site in one week to meet the requirements of the contractor's programme, the channels used two trapped outlets per system positioned to suit existing pipe-work. Standards utilised commonly in schools also include our type 4200 and 4300 access covers and surface protection.



Stainless Steel: Drainage Channels | Gratings | Trapped Gullies | Rodding Eyes | Access Covers | Corner Guards | Crash Rails | Kerbs | Special Fabrications

Accreditations: ISO 9001:2008 Quality Assurance | ISO 14001:2004 Environmental Management | OHSAS 18001:2007 Occupational Health & Safety

Component Developments is a division of Webster-Wilkinson Ltd.

Company Registration No: 892102

Registered Office: Halesfield 10, Telford, Shropshire. TF7 4QP

T: 01952 588488

E: enquiries@componentdevelopments.com

W: www.componentdevelopments.com