

3787



STAIN PROTECTION



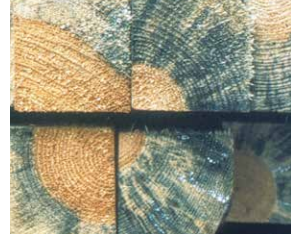
Lonza

Wood Protection

Real world thinking.
Real world performance.

Tried and tested sapstain and mould control for freshly sawn timber

Sapstain, sometimes called blue stain, is caused by fungi which thrive on freshly cut logs and sawn timber causing unsightly discolouration. Infected timber is unacceptable for many end uses representing a huge loss in value.



ANTIBLU™ SELECT 3787 is an advanced boron free, waterborne timber treatment formulation, based on biodegradable ingredients, that provides advanced and economical protection against sapstain and mould fungi for your freshly felled or freshly sawn timber.

Features

- > Provides protection against sapstain and mould throughout seasoning, storage and transport.
- > Proven performance - treated timber has been extensively tested in international field trials under different climatic conditions.
- > Contains highly effective fungicides that combine to give outstanding cost effective performance - full BPR approval.
- > Supplied as an easy to use 2 pack concentrate system that mixes readily with water to produce an exceptionally stable ready-to-use treatment solution.
- > Applied by simple dipping process - non corrosive formulation.
- > Maintains the natural colour and appearance of the timber.
- > Formulated to comply with the most stringent international health and safety legislation.
- > Fully approved by LPR (La Palette Rouge).
- > Treated timber is acceptable throughout international markets.

Your questions answered

Why is ANTIBLU™ SELECT 3787 an excellent choice for the sapstain control of your timber?

ANTIBLU™ SELECT 3787 provides a cost effective and easy to apply sapstain control for freshly sawn timber, leaving it clean and bright, even after shipping. ANTIBLU™ SELECT 3787 is a global brand backed by Lonza Wood Protection, a company with true worldwide experience in sapstain control.

When do I use ANTIBLU™ SELECT 3787?

Infection of sawn timber by stain and mould fungi can occur very quickly after harvesting. Therefore, ANTIBLU™ SELECT 3787 should be applied as soon after harvesting as possible.

How do I use ANTIBLU™ SELECT 3787?

Adding the 2 pack concentrate ANTIBLU™ SELECT 3787 to water produces a ready to use treatment solution which is then applied

to the timber by a simple dip treatment process. Once treated, timber should be left to dry before release.

How much ANTIBLU™ SELECT is used?

The concentration of ANTIBLU™ SELECT 3787 treatment solution needed to provide the desired protection will depend on many factors such as timber species, storage conditions, climate and the required length of protection. Lonza Wood Protection will carry out a detailed assessment of individual circumstances to ensure that the optimum cost effective concentration is used.

How do I monitor the ANTIBLU™ SELECT treatment solution concentration?

The concentration of ANTIBLU™ SELECT 3787 treatment solution can be easily measured on-site using a simple test kit supplied by Lonza Wood Protection.

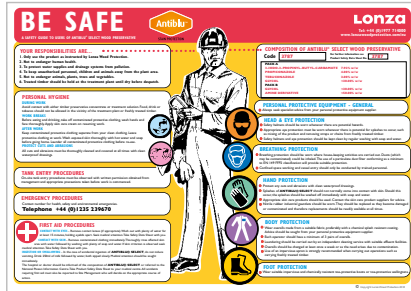
A total package for the protection of timber...

Training

Training is an important element in the operation of any treatment facility. Lonza Wood Protection provides site management and plant operator training following commissioning with ANTIBLU™ SELECT 3787.

Technical Support

A technical product support package exists for ANTIBLU™ SELECT 3787 customers.



This includes technical support visits, accurate and easy to use test kits, health and safety information and posters, operator training, laboratory analysis of treatment solutions and a coverage indicator to distinguish treated from untreated timber.



Product Supply

Lonza Wood Protection supplies antispain products throughout the world and you can have confidence in our efficiency in delivering your order. Packaging is UN approved and marked with complete product and safety details.

Treatment Plant

Lonza Wood Protection can design and supply treatment plant for use with ANTIBLU™ SELECT 3787 to suit individual requirements. Incorporating the latest in technology and safety design features, plants can be operated automatically or manually. From concept through to commissioning and utilisation, Lonza Wood Protection can provide help and guidance every step of the way.

Research & Development

Investing in research and development is of primary importance to ensure products are available to our customers now and to meet the future market and legislative needs of the industry. Lonza Wood Protection is well placed to meet those future needs with access to its own in-house research and development personnel who are strategically placed in three centres of excellence in Europe, Australasia and USA.



Further Information

Should you need any further information on ANTIBLU™ SELECT 3787 or other products supplied by Lonza Wood Protection please contact us at the address below.



For ANTIBLU™ SELECT customers, Lonza Wood Protection has a full package of support services to help ensure a safe, effective and commercially viable investment.



Lonza

Wheldon Road, Castleford, West Yorkshire,
WF10 2JT, United Kingdom.

Tel: 01977 714000

www.lonzawoodprotection.com/au

© Copyright Lonza Wood Protection - 2020

™ ANTIBLU is a registered trademark of Arch Timber Protection Ltd - a Lonza company.

Disclaimer: Whilst every attempt has been made to ensure the accuracy and reliability of the information contained in this document, Lonza Wood Protection gives no undertaking to that effect and no responsibility can be accepted for reliance on this information.

Lonza Wood Protection updates its literature as and when necessary. Please ensure you have an up to date copy.

