



BRICK FACED EXTERNAL  
WALL CLADDING SYSTEM

P-Clad is a brick faced external wall cladding system. Developed by Eurobrick for use as an external sheathing on structures where there is no requirement for insulation.

## BENEFITS

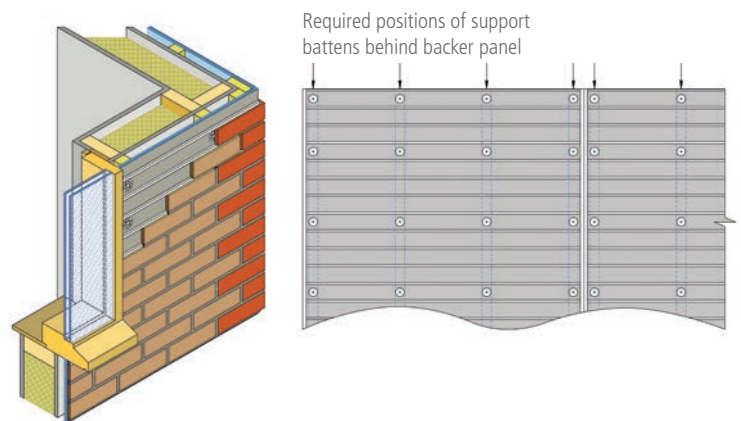
- Versatile, fast and simple to install.
- Designed for installation to all construction types, including timber frame, masonry, light gauge steel, SIPs (with or without cavity), dense or no fines concrete.
- Ideal rainscreen for prefabricated structures.
- Indistinguishable from traditional brick work.
- Durable, with a life span of over 25 years.
- Extensively tested with British Board of Agrément (BBA) certification. In addition, Eurobrick provides its own 25 year product guarantee.
- Certified for installation on some buildings over 18m high constructed with a steel frame substrate wall. Please contact us for further information.
- Tested for fire performance in accordance with BS 8414-2:2005 and found to comply with the requirements of BR135 Annex B: 2013.

## TECHNICAL INFO

- The composite backer panel comprises a 10mm thick cement particle board with Eurobrick's high impact polystyrene ribbed skin pre-bonded to it. The horizontal ribs align and support the brick slips so that brick courses are formed accurately and easily.
- System includes panels, fixings, adhesive, brick slips and pointing mortar. All items can be purchased separately. Ancillary products include corner bricks, base trim and installation tools such as adhesive guns and pointing bags.
- 10mm thick slimline profile of the backer panel provides system depth from 25mm (excluding supporting structure or mechanisms).
- We have a wide range of kiln fired clay brick slips available. These include both cut slips (Classic Range) and extruded slips (Britannia Range), please refer to our Product Guide for more information. All are FL Grade and suitable for most applications. Extruded brick slips use approximately 60-70% less energy to manufacture than traditional sized bricks, produce far less waste and can be transported more efficiently. Slips can be cut from other bricks to suit project requirements if the standard selection is not suitable.
- Pointing mortar is available in eight standard colours to complement or contrast with the bricks.

## INSTALLATION

P-Clad can be fixed to timber or light gauge steel framed walls either with or without a drainable cavity. Please note that the studs must be positioned to meet the system fixing requirements.



NB. Additional detail diagrams are available on our website or please refer to our Installation Guide. Please note that failure to fix in accordance with Eurobrick's instructions will invalidate the product guarantee.



1. The ribbed backing panel is fixed to the substrate.



2. Brick slips are attached with permanent bonding adhesive.



3. Specially formulated mortar is then piped into the brick joints.



4. Mortar is tooled in the manner of traditional pointing.



For technical queries or further advice on ordering please call  
+44 (0)117 971 7117



For more information please visit our website at  
[www.eurobrick.co.uk](http://www.eurobrick.co.uk)

