

WATERTIGHT STRUCTURES

Integral Treatments | Construction & Movement Joint Systems | Surface-applied Penetrative Treatments
Liquid-applied Coatings & Membranes | Sheet Membranes | Water Plugging





Normet stops water

A package of solutions to waterproof all types of structures, foundations and tunnels ...

Normet Construction Chemicals is a world leader in waterproofing products used for building, civil engineering, basements and tunnelling.

Normet is more than simply a manufacturer. We provide comprehensive solutions - "from the deepest foundations to the roof". Wherever water needs to be stopped or retained, Normet has a product or a system to do it.

With over 30 years of continued investment in all aspects of waterproofing, Normet's portfolio of solutions is second to none.

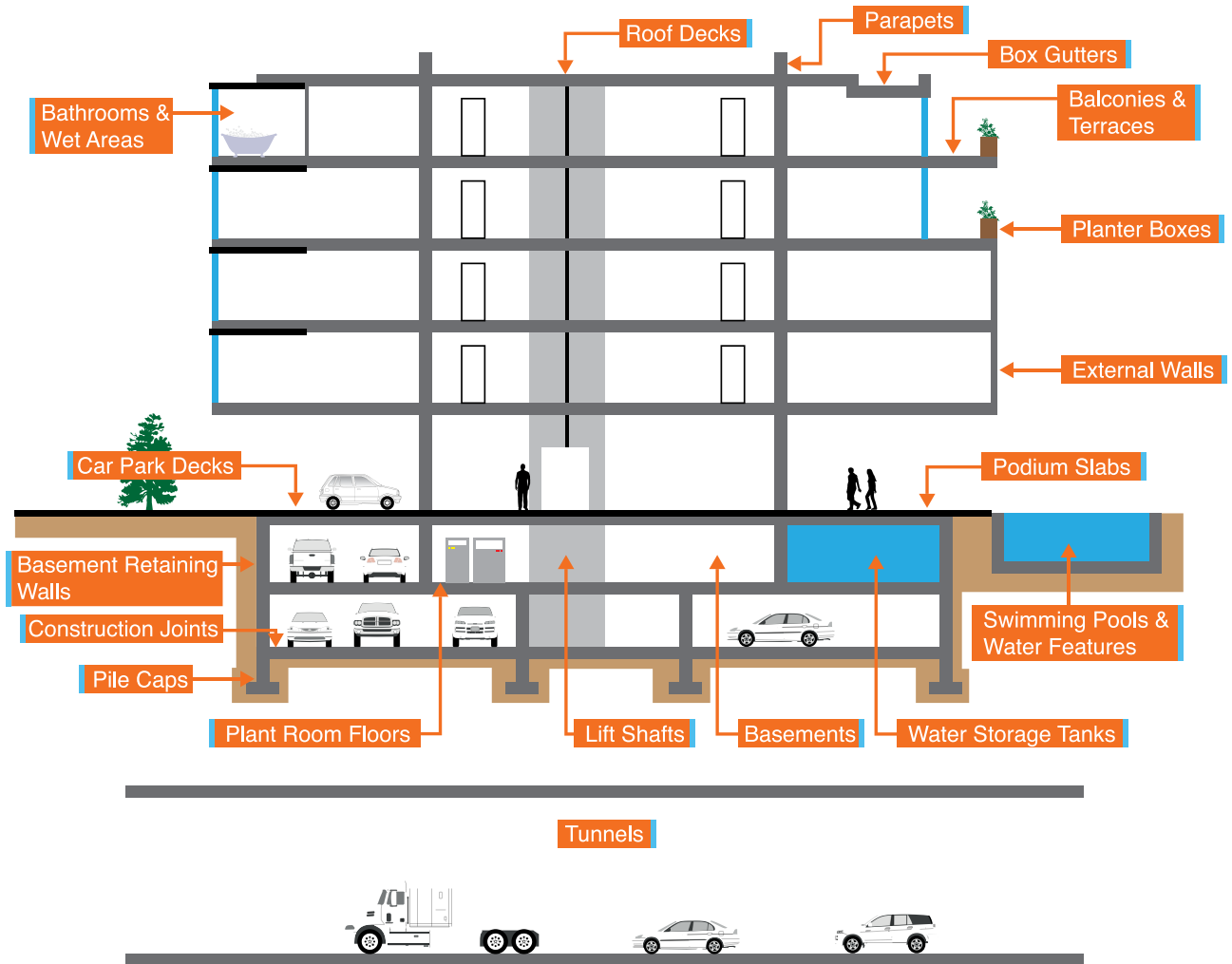


**Integral Treatments · Construction & Movement Joint Systems ·
Surface-applied Penetrative Treatments · Liquid-applied Coatings and Membranes ·
Sheet Membranes · Water Plugging**

Normet manufactures a complimentary range of Rehabilitation and Maintenance materials, including products for leak sealing and crack injection - refer to www.normet.com for details.

Normet's goal is to supply the highest quality innovative solutions, together with market leading technical support to its valued customers everywhere.

Waterproofing Application Areas



Integral Treatments

Admixtures for use in fresh concrete and mortar mixes, and formulations to treat capillaries and seal concrete through a process of crystallisation.

Waterproofing admixtures

All concrete benefits when capillary absorption can be reduced. This is most effectively accomplished where pore-blocking admixtures, or admixtures that cause the formation of catalytic crystalline growth, are used at the time of concrete production.

Normet offers technical advice on the most effective mix designs.

Polymer additives

The characteristics of screeds, renders and mortars is significantly enhanced by the inclusion of polymer-based additives to impart cohesion, workability and plasticizing qualities.

Such mix designs form a reinforcing polymer matrix and provide greater chemical resistance and stability under adverse wet or alkaline conditions.

Always refer to individual Technical Data Sheets and Health and Safety Data Sheets for more detailed information.

Product Range

TamSeal Admix

Product Range

TamSeal SBR



Construction & Movement Joint Systems

Normet specialises in the treatment and waterproofing of concrete joints. Its re-injectable tube system delivers water-stopping grouts and gels to critical locations beneath concrete surfaces, while its hydrophilic waterstops and joint treatments provide multiple solutions.

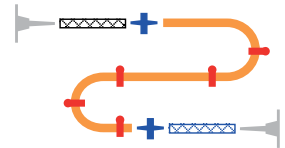
Re-injectable tubing

Failed construction joints in concrete are extremely costly to repair, often with less than perfect results.

Success or failure at these locations does not have to be left to chance. By 'designing-in' a re-injectable tube system, the entire area beneath a joint can be treated effectively at a future time (if necessary) - without the need for disruptive drilling.

Product Range

Tam Injection Tube RI



Joint sealing strips

Joints require care and attention if they are to act effectively and prevent the ingress of water. Normet surface-applied sealing strips and flexible epoxy-based sealants are suitable for joints and cracks.

Both are designed to accommodate continuous movement cycles.

Product Range

TamRez 440
TamRez HydroBand

Hydrophilic waterstops

Normet's range provides a wide choice of characteristics and 'swellability' to meet the requirements of all types of structures, including exposure to fresh water or seawater.

Pre-formed and gun-applied formulations are available, as well as a fully integrated hybrid product combining the traditional benefits of PVC with the latest innovations in hydrophilic technology. Very considerable hydrostatic pressures can be withstood.

Product Range

TamSeal BBR
TamSeal BR
TamSeal R
TamSeal SM
TamSeal CWS

Always refer to individual Technical Data Sheets and Health and Safety Data Sheets for more detailed information.



Surface-applied Penetrative Treatments

These treatments have been designed to resist the ingress of water and water-borne contaminants. Some react with free-lime to form a water insoluble calcium silicate hydrate, while others combine with free lime to form insoluble crystalline complexes within the surface matrix of the concrete.

By impregnation

Normet has a range of reactive treatments designed to be applied through flooding (of the horizontal surfaces) or by spray (on vertical surfaces). They penetrate the top layer of concrete, and reduce water permeability and water absorption. They seal incipient hairline cracks and existing cracks up to 2.0 mm wide. Chloride diffusion and efflorescence are reduced and harmful water vapour can escape.

Product Range

- TamSil 7
- TamSil 290
- TamSil 290WB

By crystallisation

Permanent, in-depth concrete protection can be achieved through the process of crystallization. Active ingredients combine with free lime and any moisture present in the capillary tracts to form insoluble crystalline complexes. The penetration becomes deeper over a period of 28 days and the process will aid the sealing of cracks.

Product Range

- TamSil 1
- TamSil 7
- TamSeal 20

Certain treatments in our range have potable water approval and can withstand water pressure greater than 12 bar. Harmful water vapour is able to escape.



Liquid-applied Coatings & Membranes

Some concrete structures require more than just waterproofing, and may require additional protection for a variety of reasons. Whatever the circumstances, the Normet range of coatings and membranes can provide a solution for any job.

Cement-based

Our cement based coatings have a natural compatibility with the host concrete and are simple and easy to apply, providing proven solutions at relatively low cost. Normet's products incorporate the latest technologies to prevent shrinkage whilst creating strong waterproof barriers.

They exhibit high resistance to positive and negative water pressure and are ideal for use on foundations, basements, bund walls, reservoirs, water-retaining structures, seawater channels, roofing and tunnels.

Product Range

TamSeal 5
 TamSeal 10
 TamSeal 10F
 TamSeal 800

Polymer-based

Some situations demand even tougher products. Normet's polymer range includes bitumen rubber, polyurethane, polyurea and acrylic technologies. These products are designed to provide first-class waterproofing capabilities but also high levels of resistance to specific chemicals, seawater, sewage and water-borne contaminants such as chlorides and sulphates.

Other products in our range provide solar heat resistance and exhibit flexibility and/or elastomeric characteristics to account for the presence of dynamic cracks.

Product Range

TamSeal 23
 TamSeal 23E
 TamSeal EP11
 TamSeal HR
 TamSeal IM
 TamSeal RC
 TamSeal 10GM



Sheet Membranes

Sheet membranes are a “tried and trusted” method of protecting and waterproofing large areas of concrete, foundation slabs, retaining walls and tunnels. Normet offers a range of sheet membranes in self adhesive or torch-applied format.

Self adhesive

TamSeal 1500 is a 1.5 mm thick, high performance, self-adhesive, rubber bitumen membrane with HDPE backing. It has first-class elongation, puncture and tear resistance, and is intended for use above or below ground and on vertical or horizontal surfaces.

It provides a fully bonded membrane capable of preventing the lateral migration of water within minutes of application.

Product Range

TamSeal 1500

Torch-applied

These membranes are available with 3.0 mm thicknesses or 4.5 kg weight. They are APP modified bituminous formulations, incorporating a mineral slate coating mounted on a tough, non-woven polyester mat.

These products are designed for heavy-duty use and exhibit exceptional tensile strength, tear resistance qualities and resistance to water-borne chemicals and UV light. They will prevent the lateral migration of water.

Product Range

TamSeal 3000C

TamSeal 4000E



Water Plugging

The ingress of ground water into basements, foundations, substructures and tunnels is a frequently-encountered problem. It is often necessary to plug running water prior to undertaking long-term remedial works to restore a waterproof environment.

Rapid setting, cement-based compounds

These are durable, single component, fast-setting hydraulic compounds which stop running water and water seepage, and become harder when subjected to constant water pressure.

TamCrete Plug sets in about 70 seconds.

TamCrete PolyPlug is strengthened by the inclusion of reinforcing fibres and polymer. It sets in about two minutes.

Product Range

TamCrete Plug

TamCrete PolyPlug



Normet Construction Chemicals does much more than provide solutions to watertight structures

Normet Construction Chemicals has over 30 years of problem-solving experience in locations around the world.

Other Normet Construction Chemicals product groups

Normet also manufactures and distributes products for -



> Mining

Complete range of specialist resins and grouts for water control, pre-injection, fissure grouting, void and cavity filling, stabilisation and rock support. Injection packers, rock bolting systems, along with high performance sprayed concrete and mine backfill additives.



> Tunnelling

Sprayed concrete technologies including high performance water reducing admixtures, alkali-free accelerators and hydration control additives. Spray applied waterproofing systems, specialist injection resins and grouts for water leakage control. TBM tail skin grease, soil conditioning foams and backfill grouting solutions.



> Rehabilitation and Maintenance

Comprehensive range of leak sealing resins, cement and epoxy based structural repair mortars and grouts, bonding agents, additives, protective coatings and impregnation systems.



> Ground Engineering

Specialist resins and cement based injection grouts for permeation grouting, fissure grouting, underpinning, void filling and ground stabilisation.



> Readymix and Precast

Solutions to enhance concrete placing efficiency and optimizes overall concrete performance for all types and grades of pre-cast, pumped and sprayed concrete.

Please ask for more information or visit
www.normet.com

Note to Specifiers

Normet's technical team are available to assist you with any questions on product suitability along with technical support on the installation or application of our waterproofing materials and systems.

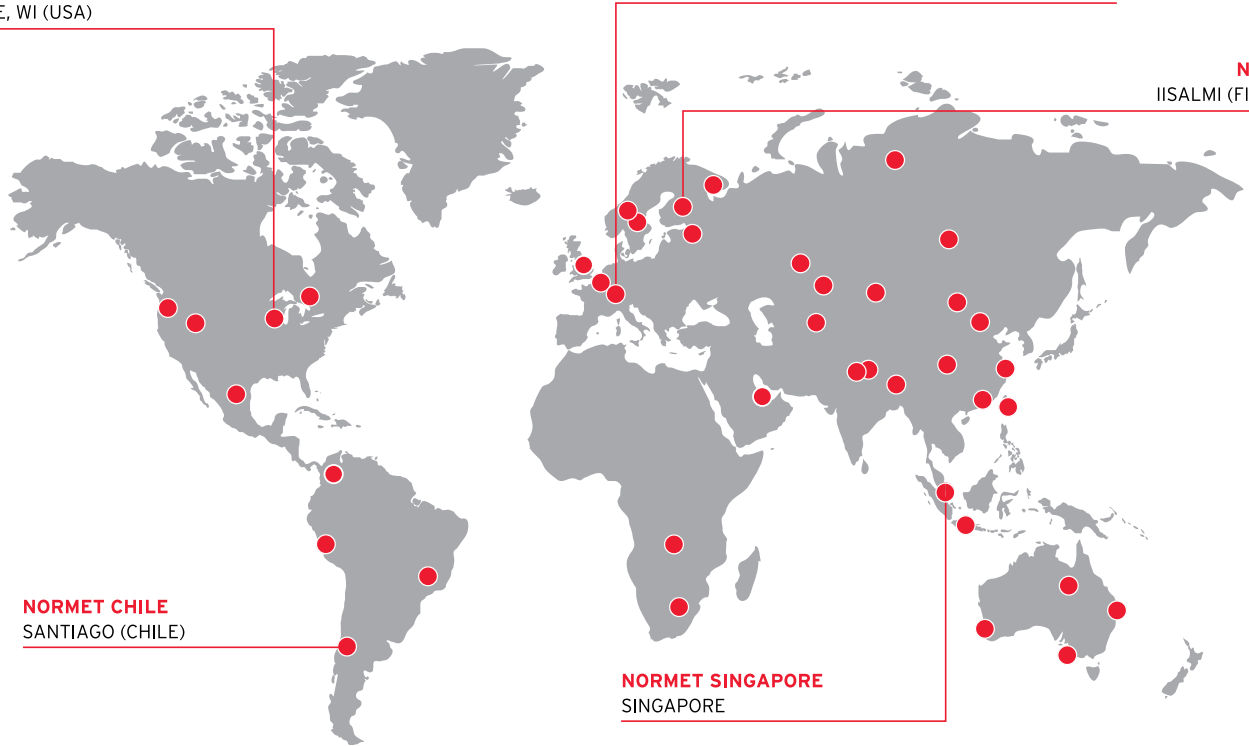
Please contact your local Normet office, distributor or applicator for further advice or information.

Global Presence / Local Support

NORMET AMERICAS
UNION GROVE, WI (USA)

NORMET INTERNATIONAL
HÜNENBERG (SWITZERLAND)

NORMET
IISALMI (FINLAND)



NORTH AMERICA

Canada
Mexico
USA

SOUTH AMERICA

Brazil
Chile
Colombia
Peru

EUROPE

Finland
France
Norway
Russia
Sweden
Switzerland
United Kingdom

AFRICA

South Africa
Zambia

ASIA

China
Hong Kong
India
Indonesia
Kazakhstan
Mongolia
Qatar

Russia
Singapore
Taiwan
Uzbekistan

AUSTRALASIA

Australia

For more information, please contact your local Normet representative,
visit www.normet.com for contact details.

NORMET CONSTRUCTION CHEMICALS BROCHURES

CONSTRUCTION CHEMICALS

MINING

TUNNELLING

REHABILITATION & MAINTENANCE

GROUND ENGINEERING

READYMIX & PRECAST

➤ WATERTIGHT STRUCTURES

