

Celcon Blocks

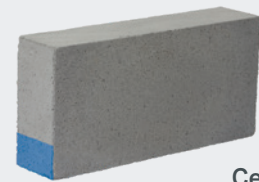
Celcon Blocks in Solar, Standard, High Strength and Super Strength Grades are the most commonly used aircrete block in the H+H range.



All Celcon Blocks are BBA certified, are fire resistant (100mm walls, up to 4 hours, 2 hours if loadbearing dependant upon the Grade) and have been classified 0 surface spread of flame and non-combustible to Class A1 (the highest class). Celcon Blocks are available in thicknesses from 75mm to 355mm Foundation Blocks and can be used in the applications listed.

Applications

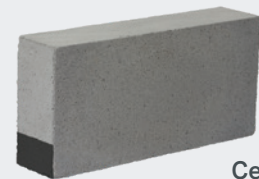
- Internal and external leaf of cavity walls
- Solid walls
- Separating walls (except Solar Grade)
- Partitions
- Flanking walls
- Multi-storey buildings
- Foundations/Below ground level
- Beam and Block floors (except Solar Grade)



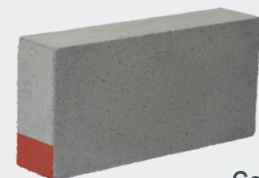
Celcon Block
Solar Grade



Celcon Block
Standard Grade



Celcon Block
High Strength Grade



Celcon Block
Super Strength Grade



Celcon Blocks

| Face size | All Grades 440mm x 215mm | | | | |
|---|-----------------------------|-----|-----|-----|-----|
| Block Thickness (mm) | 75 | 100 | 140 | 150 | 215 |
| Solar Grade Weight (kg) [†] | - | 5 | 8 | 8 | 12 |
| Standard Grade Weight (kg) [†] | 5 | 7 | 10 | 11 | 16 |
| High Strength Grade Weight (kg) [†] | - | 10 | 14 | 15 | 21 |
| Super Strength Grade Weight (kg) [†] | - | 10 | 14 | 15 | - |

† Block weights at typical moisture content when laid. (Some manufacturers may quote weights which have not allowed for this.)

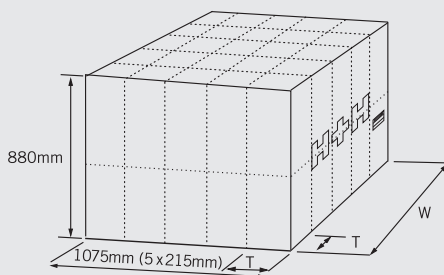
All shaded areas indicate that the product is a stock item. Other sizes can be made to order subject to minimum quantities.

| | Solar Grade | Standard Grade | High Strength Grade | Super Strength Grade |
|----------------------|-----------------------|-----------------------|-----------------------|-----------------------|
| Compressive Strength | 2.9N/mm ² | 3.6N/mm ² | 7.3N/mm ² | 8.7N/mm ² |
| Thermal Conductivity | 0.11 W/mK | 0.15 W/mK | 0.18 W/mK | 0.18 W/mK |
| Density | 460 kg/m ³ | 600 kg/m ³ | 730 kg/m ³ | 730 kg/m ³ |

| Pack Information | 440 x 215mm face size | | | | |
|-------------------------------------|-----------------------|------|------|------|------|
| Block Thickness (mm) = T | 75 | 100 | 140 | 150 | 215 |
| Coverage per pack (m ²) | 16 | 12 | 8 | 8 | 5 |
| Number of blocks per pack | 160 | 120 | 80 | 80 | 50 |
| Pack width (mm) = W | 1200 | 1200 | 1120 | 1200 | 1075 |
| Pack weight – Solar Grade (kg)* | - | 660 | - | - | 590 |
| Pack weight – Standard Grade (kg)* | 875 | 875 | 815 | 875 | 785 |
| Pack weight – High Strength (kg)* | - | 1175 | 1095 | 1175 | 1055 |

* Pack weight excludes pallet.

Celcon Blocks
(440mm x 215mm)



For further information and to check our most up-to-date product range, or to find your nearest stocking merchant, please visit our website www.hhcelcon.co.uk or contact the following departments:

Sales

For sales enquiries or to find your local stockist please contact
Tel: 01732 886444
Fax: 01732 887013

Technical

For technical enquiries please contact
Tel: 01732 880580
Fax: 01732 887013