

High-performance adhesive for larger areas (special metal-reinforced carrier)

# Sigan 2



Fast bonding of new coverings onto existing resilient and ceramic surfaces

## Applications:

Patented, metal-reinforced special dry adhesive system with micro-ventilation and ventilation channels for the fast installation of textile and resilient floor coverings which guarantees to leave no residues when removed later. Suitable for any size area. Sigan is resistant to cleaning agents and spray extraction cleaning. Sigan is suitable for underfloor heating and permits usage under high loads and traffic such as chair castors or forklift traffic. For interior use only.

### ► Suitable for:

#### Resilient floor covering (sheets and tiles)\*:

- PVC, CV floor covering
- PVC luxury floor coverings up to 130 cm long
- Homogeneous rubber up to 3.5 mm
- PUR floor coverings in sheets up to 2.5 mm, e.g. WPT PURline®
- Enomer floor coverings, e.g. Upofloor Xpression®, Zero®
- Vinyl-polyester floor coverings or woven vinyl

#### Textile flooring\*:

- Textile floor coverings with all common backings (except for PVC backing)
- Carpet tiles with fleece, PVC backing
- Kugelgarn® and Kugelvlies®
- FINETT 7 (100 % PP needle punch floor covering)
- Flotex

### ► Suitable for use on\*:

- PVC, CV floor coverings homogeneous/heterogeneous
- PVC luxury floor coverings (smooth)
- PVC safety floor coverings (smooth)
- PVC-coated cork floor coverings
- Linoleum
- PUR and epoxy resin coatings (smooth, non-porous, at least 3 months old)
- Rubber
- Polyolefin floor coverings (PO floor coverings)
- Enomer coverings e.g. Upofloor Xpression®, Zero R®
- Artificial stone, Terrazzo, Ceramic tiles (smooth, without mentionable differences in height)

**Note:** For additional combinations of floor covering and subfloor obtain technical advice.

\* see important notes



**ÖKOLINE**

for new resilient and textile floor covering

ON existing resilient and ceramic surfaces

Provides the highest possible level of emission safety and contributes towards creating a healthy room climate. Marked with the "Blue Angel" for low-emission floor covering adhesives and other installation materials according to DE-UZ 113.

**Ingredients:** Acrylic copolymers, wetting and defoaming agents, plastic film, paper.

## Product features & properties:

- Quick and easy installation
- No trapped air bubbles thanks to micro-ventilation and ventilation channels
- Floor covering immediately ready for foot traffic and loading
- Can be welded / jointed immediately
- Later removal leaves no residue
- DE-UZ 113 / Environmentally friendly because of low emissions
- EMICODE EC1 PLUS / Very low-emission

## Technical specifications:

Packaging:	carton
Packaging content:	Sigan 2: 75 cm x 25 m Sigan 2 tape: 5 cm x 25 m
Shelf life:	min. 2 years
Colour:	silver / grey
Substrate temperature:	min. 15 °C
Open time:	none
Working time:	unlimited
Set to traffic:	immediately after installation
Sealing / jointing seams:	immediately after installation

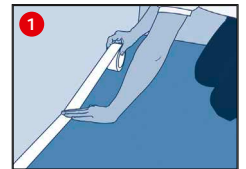
## Preparing the sub-surface:

- ▶ The sub-surface must be sound, flat, permanently dry, free of cracks, clean and free of materials that could impair adhesion.
- ▶ Test the sub-surface in accordance with applicable standards and notices and report any deficiencies.
- ▶ Damp wipe the sub-surface
- ▶ If there are oily residues, wipe the floor with a mild, diluted detergent, and then neutralise well with water (soak it up).
- ▶ Do not use any basic cleaners and do not sand.
- ▶ Trial bonding: Always perform trial bonding. Rub Sigan 2 firmly onto the substrate. Degrease substrate and repeat trial bonding if bubbles form or Sigan 2 detaches from the substrate. Obtain technical advice in case of insufficient bonding.
- ▶ Cut out any damaged areas in the existing floor covering (e.g. seams, holes, imprints) and fill with stable, cement-based, non-abrasive filler compound (no dispersion compounds).
- ▶ Sandpaper the filler, and then prime with a film-forming dispersion precoat, and allow this to dry completely before laying the Sigan 2.
- ▶ In order to minimize a possible forming of joints, you should allow the floor covering and the Sigan 2 to acclimatise sufficiently (48 h) according to the manufacture's recommendations.

## Application:

### 1 Install 50 mm Sigan 2 tape:

- ▶ Apply Sigan 2 tape along walls and doors, a) to even out uneven walls, b) for increased adhesion in the edge areas, c) for gluing areas that are difficult to access.
- ▶ Do not pull off the protective paper yet.
- ▶ Do not overlap the Sigan 2 tape, but mount edge to edge, or cut back to a butt-joint where overlapping.

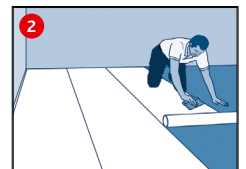


### 2 Installing 750 mm Sigan 2 Roll:

- ▶ Install Sigan 2 in running direction of the new floor covering preferably with overlap. To this end, roll down without pressure and section by section; rub down by means of a cork-textile rubbing-board, without bubbles, in unrolling direction. Now unroll the next section in the same manner and rub down until the entire sheet has been installed. If air becomes trapped, roll back the roll for the distance required and repeat the rub-down process without bubbles. Then cut back to the joint using a hooked knife, or roll out edge to edge directly (max. 3 mm space permitted, no overlaps). Do not damage the substrate.

**Attention: Never apply the grey matted side (covered with protective paper) onto the subfloor.**

- ▶ Sigan 2 may overlap Sigan 2 tape but must be cut back to butt-joint.
- ▶ Install the last run of Sigan 2 starting from the wall. Cut back the resulting overlap to fit edge-to-edge using a hooked knife. Do not damage the substrate while doing this.
- ▶ Wrap any remaining Sigan 2 roll with protective paper (edge protection and protection against dust).
- ▶ Ventilation channels may show with resilient floor covering.
- ▶ Only roll out the same amount of Sigan 2 as the amount of floor covering that will be installed on the same day.



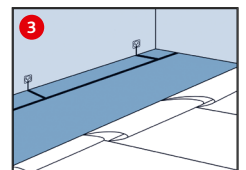
### 3 Preparations for horizontal conductive floor covering:

- ▶ Pull back the Sigan 2 protective paper approx. 40 cm across the direction of the run or the seam of the new floor covering. Do not fold!
- ▶ With a distance from the wall of approx. 10 cm over the whole width of the room, glue one run of self-adhesive copper strip onto the exposed Sigan 2. The non-adhesive side faces upwards.
- ▶ Install a terminal lug (approx. 1 m) at the level of the earth potential connection to earth overlapping the previously laid copper tape. The connection must be carried out by a qualified electrician!
- ▶ Place the protective paper back onto Sigan 2 and press down.
- ▶ Carry out the same procedure on the opposite side (2 connections per room).

**Attention: Only use coverings with horizontal conducting back coatings.**

**The copper tape may show through the floor covering.**

**Never apply the strongly bonding side (covered with protective paper) onto the subfloor.**



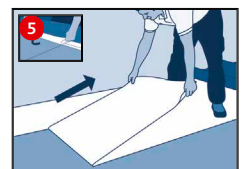
### 4 Installing the floor covering:

- ▶ Lay out the floor covering and fit approximately.
- ▶ Fold back half of the floor covering run in the running direction.



### 5 Pull protective paper off Sigan 2 tape.

- ▶ Pull the protective paper away from the Sigan 2 horizontally and straight up to the folded back floor covering.
- ▶ Cut off the pulled off protective paper leaving a remnant of 10 cm. Fold the remnant under the folded back floor covering (forming a flap).
- ▶ Stack the protective paper and roll together (minimises the waste volume).



## 6a Textile flooring

- ▶ Lay the first half of the textile floor covering free from tension and undulations and rub down.
- ▶ Fold back the second half of the textile floor covering and pull off the remainder of the protective paper with the help of the flap.
- ▶ Lay the textile floor covering, rub/roll down and cut to fit at the edge.

Installing textile floor covering with seam.

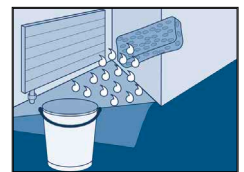
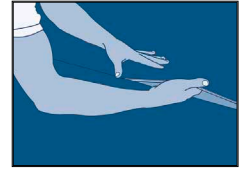
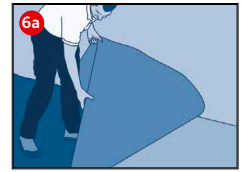
- ▶ Cut seam according to manufacturer's recommendation before installation. Use a steel rail underneath when making a double cut (never cut through Sigan 2).
- ▶ The seam of the floor covering must not lie on the Sigan 2 joint.
- ▶ Install the carpet run precisely at the seam.
- ▶ Fold back half of textile floor covering (can also be taken back from the seam).
- ▶ Pull off protective paper horizontally and form a flap.
- ▶ Lay and rub down the first run, and then lay the second run bit by bit precisely along the seam, and rub down.
- ▶ Rub/roll down well in crosswise direction.

**Attention: Never use knee kickers and seam clamps!**

### Water trick

When laying the seam, when cutting to shape and when pushing the textile covering under radiators or around columns, etc., proceed as follows:

- ▶ Pull the protective paper from the Sigan 2
- ▶ Dampen the Sigan 2 at the desired position using a sponge. Only use a little water as too much may damage the substrate.
- ▶ Push the textile covering into the desired position (aqua-planing effect).
- ▶ When the water evaporates, the Sigan 2 will recover its full adhesive strength.
- ▶ Rub down the textile covering again.



## 6b Resilient floor coverings:

- ▶ Push in the first half of the floor covering bit by bit (avoiding air bubbles) and rub/roll down in crosswise direction.
- ▶ Fold back the second half of the floor covering and pull off the remainder of the protective paper with the help of the flap.
- ▶ Slowly push in the floor covering, rub/roll down and cut to fit at the edge.

Install elastic floor covering with seam.

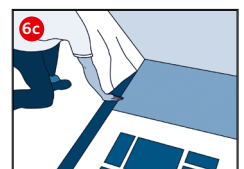
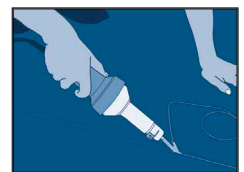
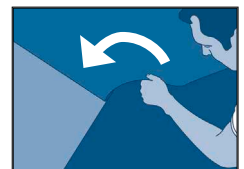
- ▶ Cut seam according to manufacturer's recommendation before installation. Use a steel rail underneath when making a double cut (never cut through Sigan 2).
- ▶ The seam of the floor covering must not lie on the Sigan 2 joint.
- ▶ Without changing its position, fold back half of the floor covering.
- ▶ Pull off protective paper horizontally and form a flap.
- ▶ Lay and rub down the first run, and then push in the second run bit by bit up to the seam at an angle, and lay to match precisely.
- ▶ Rub/roll down well in crosswise direction.

### Welding/jointing seams and joints

- ▶ Joints and seams of elastic floor coverings in sheets or tiles (except: luxury floor coverings in planks and tiles) must be thermally or chemically welded together.
- ▶ The specifications of the floor covering manufacturer must be observed when performing the welding/jointing action.
- ▶ Welding/jointing can be performed immediately after installation.

## 6c Luxury floor covering and tiles:

- ▶ Measure the room, divide into planks/tiles. Mark the starting point of the row of planks/tiles and, if applicable, wall frieze, with a suitable pen (soft pencil or regular DVD marker) on the protective paper.
- ▶ Place a steel rail along the starting points and align.
- ▶ Pull the protective paper away from the Sigan 2 horizontally and straight up to the steel rail.
- ▶ Tear off the protective paper along the steel rail at an angle toward the top. The straight line this created serves as reference line of the first row of planks/tiles.
- ▶ Stack the protective paper and roll together (minimises the waste volume).
- ▶ Install the planks/tiles along the reference line without stressing and press down firmly by hand.
- ▶ Continually pull back the protective paper horizontally and straight. Install the floor covering as described. If the installation process is interrupted, the protective paper can be reapplied as protection for the Sigan 2.
- ▶ After installation, rub/roll down firmly crosswise over the whole area.



## Sigan: Removing floor covering without residues – without damaging the sub-surface.

- ▶ First cut floor covering into strips (approx. 25 – 50 cm) using a hooked blade. Do not damage the sub-surface!
- ▶ Separate the floor covering with edge tape from the sub-surface starting at one corner.
- ▶ Pull off floor covering **together** with Sigan at a flat angle, and you're finished!

No adhesive residues will remain on the sub-surface when using Sigan! As a rule, Sigan can no longer be removed from the back of the floor covering, but can be disposed off with the floor covering without problem.

- ▶ Before any further laying with Sigan, the sub-surface must first be vacuum cleaned. Then install the new floor covering with Sigan.



### Important notes:

Store in the standing position in a dry and cool place, away from direct sunlight. Rewrap opened rolls in protective paper.

- ▶ PVC and rubber floor covering as well as textile floor covering with PVC backing in sheets and tiles, showing dimensional changes, tested according to the test standards EN 434 or EN ISO 23999, of  $\leq 0.40\%$ ; luxury floor covering, showing dimensional changes, tested according to the test standards EN 434 or EN ISO 23999, of  $\leq 0.25\%$  as well as tufted textile floor covering. Do not install LVT floor coverings which appear warped or stressed.
- ▶ Resilient floor covering (exception of luxury floor covering) should be jointed/welded. The specifications of the floor covering manufacturer must be observed when performing the welding action.
- ▶ Rising humidity from the subfloor can't pass through the Sigan 2 foil carrier. Enclosed moisture could cause damage to the construction underneath.
- ▶ **Further substrates:**
  - Levelling compounds → Sigan 1 with Planus
  - 2-Component PU Levelling Compound → Sigan 1 with Planus
  - Wooden floors (untreated), chipboards, Plywood/MDF panels → Sigan 1 with Planus
  - Wood flooring and laminate → Sigan 3
  - Sealed cork floor covering → Sigan 3
  - Textile floor covering → Sigaway

### Protection of the Workplace and the Environment:

The product does not require any special labour protection measures. For reasons of working hygiene, we recommend avoiding eating, drinking and smoking during processing of this product. Store out of the reach of children.

For more information refer to [www.uzin.com](http://www.uzin.com) or contact +49 731 4097-0

### Disposal:

Empty shells and the cardboard packaging can be recycled. Material remnants can be disposed of as household waste.

### Warranty:

**UZIN grants a 5-year warranty for all properties claimed in the processing instructions.**

Sigan 2 complies with VOB Part C, Pt. 2.7 Adhesives: "They form a fixed and durable connection, and cause no impairment to either the floor covering or the sub-surface, and produce no pollution through odour after fitting".

- Follow the generally accepted rules of the trade and the technology for laying floor coverings according to the valid national standards EN, DIN, VOB, OE, SIA and TKB-Technical Briefing Note 12.

The warranty becomes void if:

- Sigan 2 products are used in outside areas, operating theatres and in vehicle construction.
- unusual influences, and in particular those of a chemical or mechanical nature, affect the product.
- sub-surface unevenness occurs (insufficient stability of the sub-surface).
- in case of any utilisation or processing that deviates from the laying instructions (never use Sigan 2 on stairs or walls).
- PVC/CV runs or tiles are not thermally or chemically welded/joined, and joints/seams arise for this reason.
- discolouration arises from chemical reactions between the floor covering and the sub-surface.
- if joints are formed or warping occurs due to dimensional changes of the floor covering.
- the floor covering was laid stretched and under tension.
- dampness affects the Sigan 2.
- laying is carried out at temperatures below 15°C (at the floor!).
- Sigan 2 is used in areas with increased air humidity and/or thermal loadings (e.g. conservatories).
- no adhesive trials are carried out.