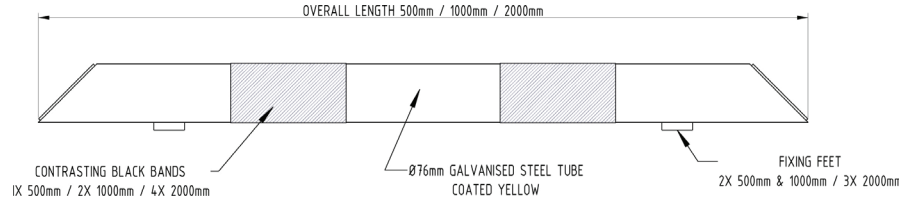
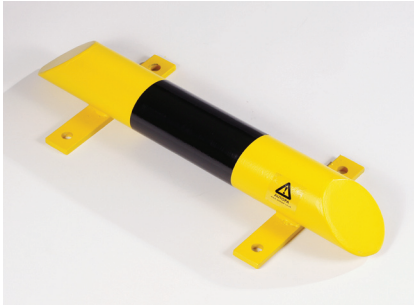




Black And Yellow Low Level Protection Rail



The AUTOPA range of Black & Yellow products are ideal for providing High Visibility protection in both internal and external warehousing environments. All products in the range are galvanised mild steel, ensuring their longevity and are designed to take the knocks and bumps that occur in all warehouses.

The Low Level Protection Rail is made in 76mm outside diameter tube, is coated yellow with black reflective bands and is available in 500mm, 1,000mm & 2,000mm long versions (500 & 1,000 versions shown). The product is designed to be located in any location where a physical barrier is required to protect machinery, racking or similar.



<u>Part Number</u>	<u>Description</u>	<u>Weight (kg)</u>
138 177 765	500mm, Bolt down	4.0kg
138 177 775	1000mm, Bolt down	6.0kg
138 177 915	2000mm, Bolt down	12.0kg
138 100 999	M10 Expanding Bolt (4 required per rail)	
138 200 047	M10 Rawl Bolt (4 required per rail)	

Product details

- Galvanised mild steel, coated yellow with black bands
- 76mm diameter outside diameter tube
- Supplied with flange plates for bolting down

Installation & use

Each rail requires bolting down to a suitable concrete surface (no less than 150mm deep) by means of four M10 bolts. This product is guaranteed for 12 months (if installed and used correctly).



www.autopa.co.uk
+44 (0)1788 550556

AUTOPA Limited
Cottage Leap, Rugby, Warwickshire CV21 3XP

