

# *Air Terminal Devices for Every Application*



**FläktWoods**

## Plenum box

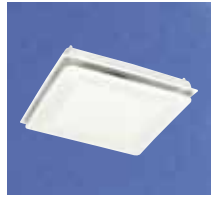


**ATTB**  
100 - 315 l/s

## Ceiling diffusers



**RHOB**  
14 - 210 l/s<sup>1)</sup>



**RHKP**  
14 - 210 l/s<sup>1)</sup>



**ROFA**  
14 - 185 l/s



**RPFA**  
14 - 185 l/s



**DCKA**  
4 - 240 l/s



**Varimix RSRO**  
14 - 240 l/s<sup>1)</sup>



**Varimix RSRP**  
14 - 240 l/s<sup>1)</sup>



**CTPB**  
10 - 65 l/s



**KHAA**  
10 - 650 l/s

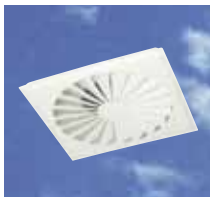


**VSKB**  
14 - 170 l/s<sup>1)</sup>



**VSFA**  
14 - 210 l/s

## Swirl diffusers



**VFKB**  
14 - 180 l/s<sup>1)</sup>



**VFFA**  
40 - 235 l/s



**NWPA**  
10 - 300 l/s



**NWPP**  
20 - 280 l/s



**NWCA**  
40 - 230 l/s

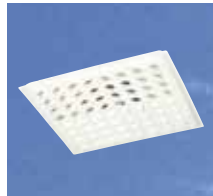


**SDZA**  
110 - 840 l/s

## Nozzle diffusers



**PDZA**  
80 - 460 l/s



**DYKC**  
14 - 170 l/s<sup>1)</sup>



**DYCC**  
14 - 170 l/s<sup>1)</sup>



**DYFA**  
14 - 160 l/s



**DYSB**  
14 - 140 l/s



**CTAB**  
20 - 190 l/s

## Jet Nozzle diffusers



**DDAA/DDBA**  
7 - 280 l/s



**DKAA/DKBA**  
7 - 280 l/s



**DKOA**  
7 - 280 l/s



**DSAA/DSBA**  
7 - 280 l/s



**DRAA/DRBA**  
7 - 280 l/s



## Slot diffuser

## Wall diffusers



**SVQC**  
15 - 140 l/s



**STQA**  
3 - 40 l/s



**EHC**  
10 - 370 l/s



**VLC**  
5 - 40 l/s



**DYVB**  
14 - 100 l/s



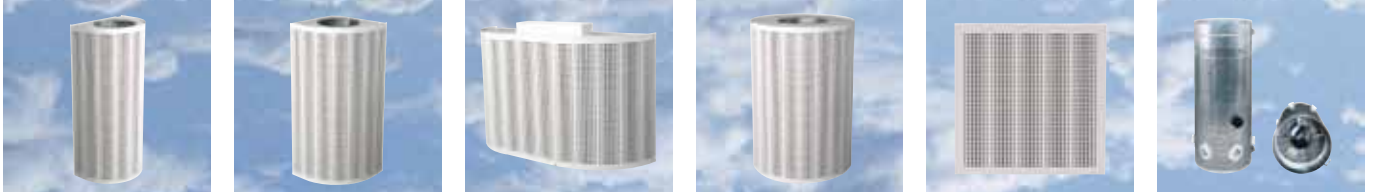
## Exhaust diffuser

**HPKB**  
14 - 240 l/s<sup>1)</sup>

<sup>1)</sup> Diffusers with plenum box ATTB is described with fully open damper.

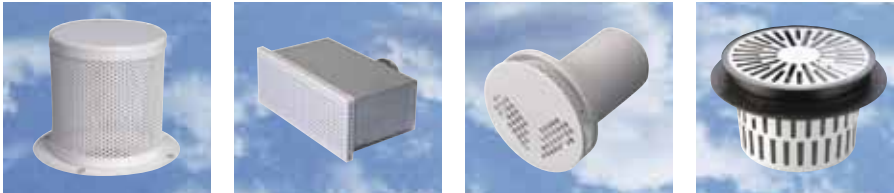
# Air Terminal Devices for Every Application

## Displacement diffusers



**DVHA** 20 - 1150 l/s    **DVQA** 20 - 800 l/s    **DVPA** 40 - 2250 l/s    **DVRA** 40 - 2000 l/s    **DVCA** 40 - 155 l/s    **WOZA** 280 - 2000 l/s<sup>2)</sup>

## Floor diffusers



**GFB** 7 - 15 l/s    **DASH** 6 - 18 l/s    **DUSH** 10 - 16 l/s    **PWAA** 20 - 50 l/s

## Exhaust air valves



**KGEB** 3 - 65 l/s    **GPDF, GPDB** 3 - 160 l/s



**KGFC** 5 - 50 l/s    **KGEA** 5 - 50 l/s    **KSO** 5 - 105 l/s    **KSO-S** 5 - 40 l/s    **KSO-V+DBL** 5 - 105 l/s    **SAV** 5 - 40 l/s



**KSO-P** 2 - 100 l/s    **KK** 2 - 160 l/s    **KKC** 2 - 60 l/s    **NK** 3 - 160 l/s    **BYBA** 1 - 35 l/s    **BYFA** 5 - 33 l/s



**VEF** 2 - 80 l/s    **VEF-S** 2 - 80 l/s    **VEL-10-0** 4 - 40 l/s    **VEL-10-1** 4 - 30 l/s    **VEL-10-2** 4 - 30 l/s

## Supply air valves



**CTVB** 3 - 60 l/s    **CTVK** 2 - 22 l/s    **KE** 2 - 140 l/s    **KEC** 2 - 90 l/s    **KGER**    **KTI** 5 - 135 l/s



## Supply air valves, cont.



**KTS**  
5 - 75 l/s



**NE**  
3 - 120 l/s



**STI**  
5 - 85 l/s



**VDTA**  
7 - 20 l/s



**VST**  
3 - 70 l/s



## Natural ventilation



**RK**  
3 - 90 l/s



**RK-T**  
3 - 120 l/s

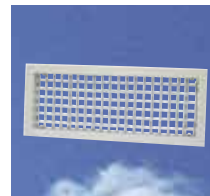


**RK-PK**  
3 - 90 l/s



**PSV**  
2 - 60 l/s

## Grilles



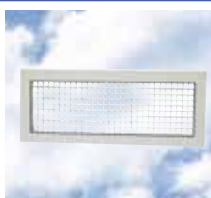
**SV-2**  
20 - 1000 l/s



**SV-1**  
20 - 1000 l/s



**AVS, AVS-L, SI**  
20 - 1000 l/s



**USR**  
30 - 650 l/s



**TG**  
15 - 320 l/s



**TGE**  
20 - 470 l/s



**BYSE**  
15 - 80 l/s



**BYSO**  
10 - 45 l/s

## Transfer air grilles



**HSD**



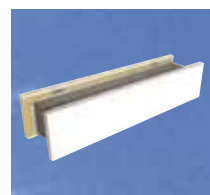
**HUS**



**OSK**  
10 - 140 l/s



**SK**  
5 - 75 l/s



**SKA**  
11 - 75 l/s



**RS**



**VFLC**  
2 - 13 l/s



**VFLH**  
2 - 14 l/s



**VFLR**  
2 - 13 l/s



**ACTI**  
6 - 110 l/s, m



**UNO**  
2 - 50 l/s, m

## Diffusers with HEPA-filter



**SPNH/SPNV**  
40 - 270 l/s



**SPWH/SPWV**  
70 - 290 l/s



**NSLA**  
500 - 1000 l/s

## Industrial diffusers



**KHDA**  
50 - 850 l/s



**SV-TS**  
130 - 750 l/s



**UDZA**  
120 - 1450 l/s<sup>2)</sup>

# ***Fläkt Woods Air terminal devices and Ducts***



**Air Diffusers and Valves**



**Air Volume Control**



**Duct System**



**Duct Accessories**



**Chilled Beams Flexicool Perimeter Wall System**



**Fan Coil Unit & Chilled Water Cassettes**

# We Bring Air to Life

Fläkt Woods is a global leader in air management. We specialise in the design and manufacture of a wide range of air climate and air movement solutions. And our collective experience is unrivalled.

Our constant aim is to provide systems that precisely deliver required functions and performance, as well as maximise energy efficiency.

## Solutions for all your air climate and air movement needs

Fläkt Woods is providing solutions for ventilation and air climate for buildings as well as fan solutions for industry and infrastructure.

### ● Air Handling Units (AHUs)

Modular, compact and small AHU units. Designed to ensure optimisation of indoor air quality, operational performance and service life.

### ● Air Terminal Devices and Ducts

Supply and exhaust diffusers and valves for installation on walls, ceiling or floor are all included in our large range and fit all types of applications.

### ● Chilled Beams

Active induction beams for ventilation, cooling and heating, and passive convection beams for cooling. For suspended or flush-mounted ceiling installation - and multi-service configuration. With unique Comfort Control and Flow Pattern Control features.

### ● Residential ventilation

A complete range of products for residential ventilation. Consists of ventilation units, exhaust air fans and cooker hoods designed to optimise indoor comfort and save energy.

### ● Fans

Advanced axial, centrifugal and boxed fans for general and specialist applications. Comprehensive range including high temperature and ATEX compliant options. Engineered for energy efficiency and minimised life cycle cost.

### ● Chillers

Air-cooled and water-cooled chillers with cooling capacity up to 1800 kW. Designed to minimise annual energy consumption in all types of buildings.

### ● Controls and drives

Variable speed drives and control systems, all tested to ensure total compatibility with our products. Specialist team can advise on energy saving and overall system integration.

## Fläkt Woods Oy

Kalevantie 39,  
FI-20520 Turku, FINLAND  
Tel. +358 20 442 3000  
[www.flaktwoods.com](http://www.flaktwoods.com)

The logo for Fläkt Woods, featuring the company name in a bold, green, sans-serif font. A stylized green leaf-like graphic element is positioned above the 't' in 'Woods' and below the 'ä' in 'Fläkt'.