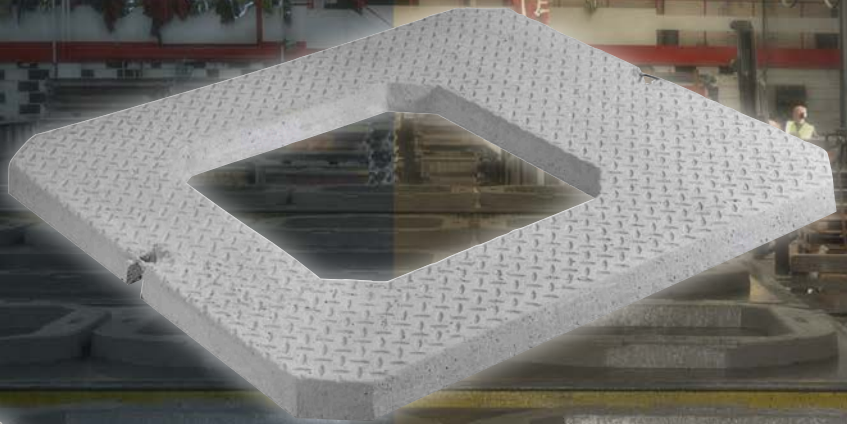


Seating Rings/Adjusting Units

Concrete frame adjusting/seating rings are reinforced 65mm deep units which can be used in place of engineering bricks to adjust the ductile or cast iron covers and frames to the required level.

They can be quickly and easily installed by semi-skilled labour and there are fewer joints which reduce the likelihood of infiltration.

Our multi-part adjusting units offer the advantage of light weight sections enabling one man to handle the units and comply with manual handling regulations.



For more information on Elite quality concrete products phone 01952 588 885 or browse www.eliteprecast.co.uk

Seating Rings/Adjusting Units

Seating/adjusting types

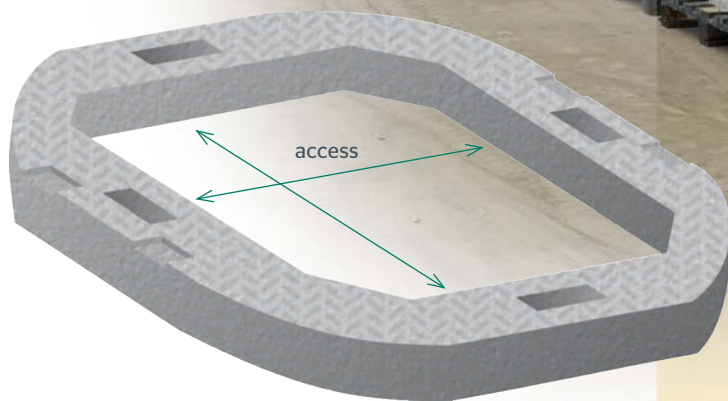
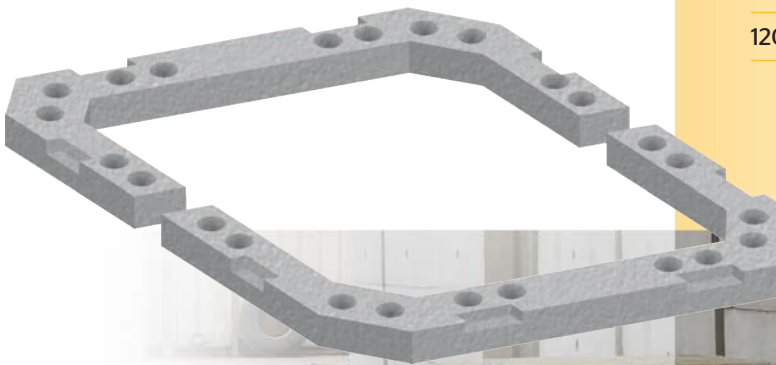
Manhole Seating Rings are manufactured to BS 5911-3 standard in the following sizes...

One-part Seating Rings

- 600mm x 600mm access
- 675mm x 675mm access
- 750mm x 600mm access
- 750mm x 750mm access
- 600mm x 600mm eccentric

Two-part Seating Rings

- 600mm x 600mm access
- 675mm x 675mm access
- 1200mm x 675mm access



Manhole seating rings

Access	Weight	Pack size	Pack weight
--------	--------	-----------	-------------

One-part

600 x 600mm	70kg	15	1050kg
675 x 675mm	60kg	15	900kg
750 x 600mm	70kg	10	700kg
750 x 750mm	80kg	10	800kg
600 x 600mm (eccentric)	80kg	10	800kg

Two-part

600 x 600mm	48kg	15	720kg
675 x 675mm	56kg	15	840kg
1200 x 675mm	90kg	10	900kg

