

axis

Automatic Entrance Systems

STANLEY

7400 Series

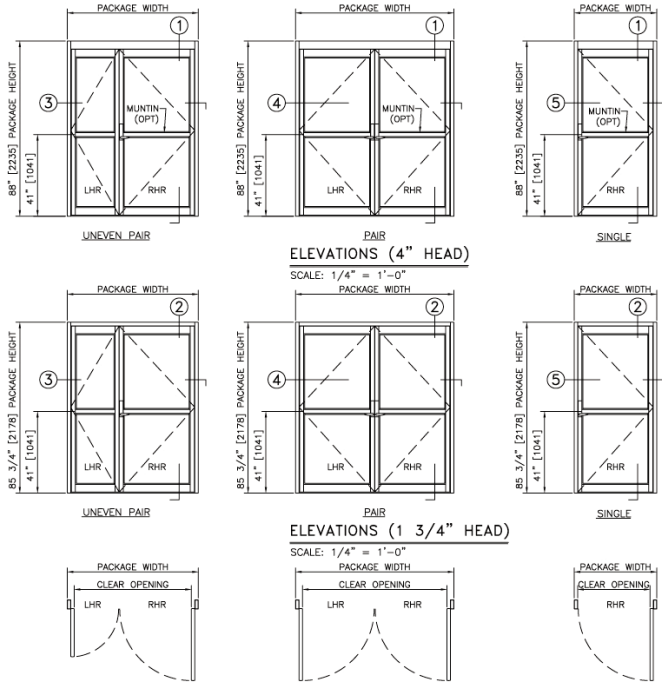
ICU/CCU DURA-CARE™ SWING DOOR SYSTEM



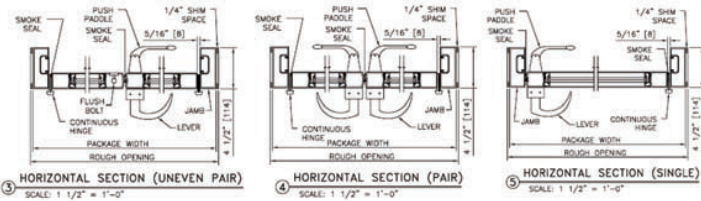
DESIGNED TO MEET THE SPECIFIC REQUIREMENT FOR “SIDE HINGE SWINGING” DOORS SERVING HOSPITAL CORRIDORS

- Single, pair, uneven pair configurations
- Heavy-duty continuous hinge
- Built-inconcealed closer
- Two header options
- Anti-microbial protection options
- Tested and Certified by UL® Laboratories to ANSI/UL 1784 for Leakage Rated Door Assemblies: “Smoke and Draft”
- Optional Concealed Sweeps for Applications that Require +/- Pressure Rating
- Positive Latch Standard on Active Panels
- Available in Both Narrow and Medium Stile

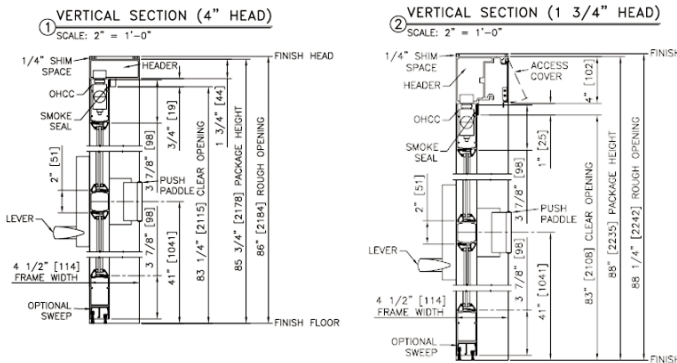
7400 Elevations and Plans



7400 Horizontal Sections



7400 Vertical Sections



Product Specifications

Description	Standard Configuration	Options
Header Dimension	1.75" (h) x 4.5" (w)	4.0" (h) x 4.5" (w)
Frames	1.75" (h) x 4.5" (w)	
Stiles	Narrow (2.0")	Medium (3.5")
Glass Stops	0.25"	0.625", 1.0"
Bottom Rails	4"	6", 8", 10", 12", 15", 18"
Finish	Clear or Dark Bronze	Special Finish Available
Package Height (STD)	85.75"	88.0"
Package Dimensions (MAX)	100.0" (H) x 99.5" (W)	
High Temperature Gaskets	Included	
Positive Latch	Included	
Continuous Hinge	Included	
Flush Bolt on Inactive Panels	Included	
Transoms	Available Upon Request	
Keyed Cylinder	Optional	
Listings/Ratings	UL/UL1784, NFPA105, +/- Pressure	
+/- Pressure Rated	Max. rating w/Optional Concealed Bottom Sweeps	
Active Panel Width Range	36" - 48"	
Inactive Panel Width Range	12" - 48"	
Anti-Microbial Protection	Touch-Points or Full-Package	

Package Dimensions

Typical Package Dimensions, Uneven Pair (Narrow Stile)				
Package Width	Nominal Clear Opening	Nominal Active Panel Width	Nominal Inactive Panel Width	Rough Opening
63.5"	52.0"	36.0"	24.0"	64.0"
69.5"	58.0"	42.0"	24.0"	70.0"
71.5"	60.0"	44.0"	24.0"	72.0"
75.5"	64.0"	48.0"	24.0"	76.0"

Typical Package Dimensions, Pair (Narrow Stile)			
Package Width	Nominal Clear Opening	Nominal Panel Width	Rough Opening
75.5"	61.0"	36.0"	76.0"
87.5"	73.0"	42.0"	88.0"
91.5"	77.0"	44.0"	92.0"
99.5"	85.0"	48.0"	100.0"

Typical Package Dimensions, Single (Narrow Stile)			
Package Width	Nominal Clear Opening	Nominal Panel Width	Rough Opening
39.5"	32.3"	36.0"	40.0"
45.5"	38.3"	42.0"	46.0"
47.5"	40.3"	44.0"	48.0"
51.5"	44.3"	48.0"	52.0"



Axis Automatic Entrance Systems Ltd
Unit 6, Queens Park Industrial Estate, Studland Road,
Northampton, NN2 6NA.
Tel: 01604 212500 · Fax 01604 212495
Email: sales@axisautomatic.com
www.axisautomatic.com

