

*axis*

Automatic Entrance Systems

**STANLEY**

# 7500 Series

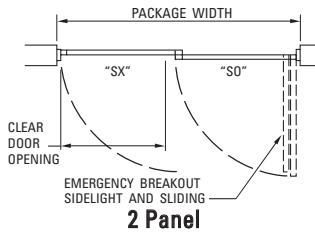
ICU/CCU



DESIGNED TO MEET THE SPECIFIC NEEDS OF HOSPITAL INTENSIVE AND CARDIAC CARE UNITS (ICU/CCU)

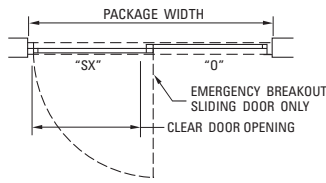
- 2, 3, 4 and 6 panel packages
- Telescopic packages
- Trackless models
- Positive latching
- Full breakout versions
- Smoke and draught control
- Broad glass panels provide unobstructed view to patients
- The ICU 7500 Series Telescopic provides greater clear door opening for a given rough opening
- Patients remain undisturbed by nearby activity, or other intrusions
- Provides easy, flexible access to the patient area
- The 7200 Series allows for a trackless threshold feature with the ability to breakout the SX panel at any point
- Smoke and Draft Controls now available on standard 2-panel and 3-panel ICU/CCU Door systems
- Designed to meet UL®1784 and NFPA105
- Positive latching available

**7000 ICU SERIES**



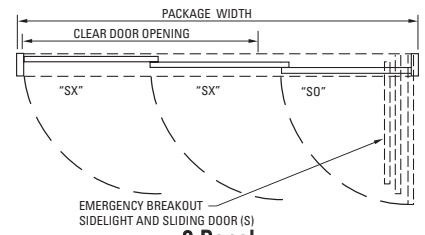
**2 Panel**

**7200 ICU SERIES**

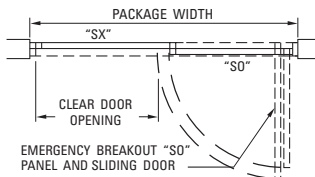


**2 Panel (Trackless)**

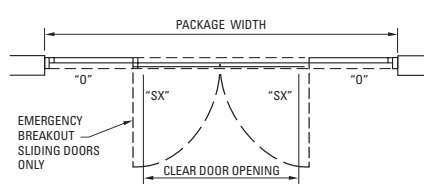
**7500 ICU SERIES TELESCOPING**



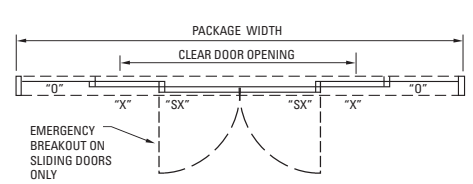
**3 Panel**



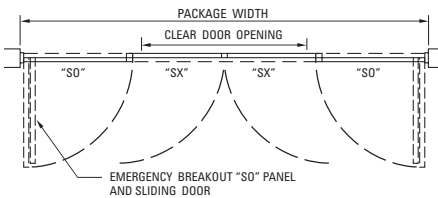
**2 Panel (Trackless)**



**4 Panel (Trackless)**



**6 Panel (Trackless)**



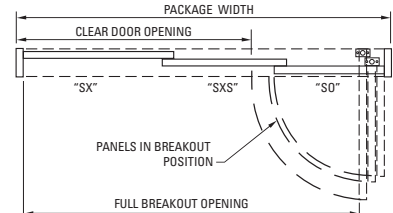
**4 Panel**

**Door Packages are Manufactured To Fit Your Job Requirements**

Standard Height for all ICU/CCU Entrances is 88 inches

Width Ranges are as Follows:

- 7000 ICU Series Single Slide: 84" to 108" Wide
- 7000TL (Trackless) ICU Series Single Slide: 84" to 102" Wide
- 7500/7500TL (Trackless) ICU Series Telescopic: 72" to 160" Wide
- 7500TL (Trackless FBO) ICU Series Telescopic: 74" to 142" Wide



**3 Panel (Trackless)**

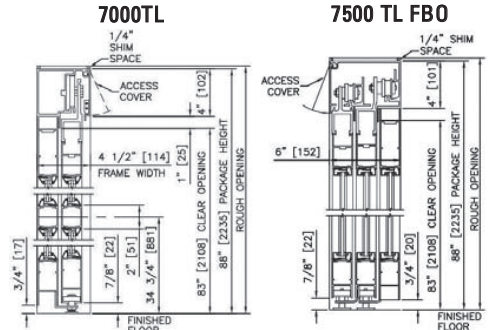
*Note: Not all products depicted, please refer to website for complete product line.*

**7000 Product Line Features and Benefits**

	7000	7000 TL	7200	7500	7500 TL	7500 TLFCB
Panels	2, 3 <sup>1</sup> , 4	2, 3 <sup>1</sup> , 4	2, 4	3, 6	3, 6	3, 6
w/Track	●			●		
Trackless		●	●		●	●
Full Breakout	●	● <sup>2</sup>		●		● <sup>2</sup>
Fixed Sidelight			●		●	
Positive Latch <sup>3</sup>	●	●	●	●	●	●
Smoke & Draft <sup>4</sup>	2 Panel	2 Panel	2 Panel	3 Panel	3 Panel	3 Panel

1. 3 Panel model incorporates additional fixed or breakout side light.
2. Trackless model must be in full open position prior to breakout.
3. Positive latch option available on all models; included with Smoke and Draft Control.
4. Smoke and Draft packages shall not exceed 168" (W) x 120" (H).
5. Capable of supporting glazing from 1/4" to 1".

**Vertical Section**



Slide/Swing model also available



**Axis Automatic Entrance Systems Ltd**

Unit 6, Queens Park Industrial Estate, Studland Road, Northampton, NN2 6NA.

Tel: 01604 212500 · Fax 01604 212495

Email: sales@axisautomatic.com

www.axisautomatic.com

