

JOHNSON • TILES

Intro Collection



5 Colours



2 Finishes



1 Size

Sanctuary

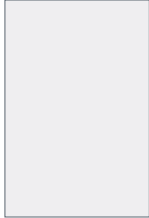
Glazed Ceramic

Wall Tiles



Sanctuary is available in **one** subtle and versatile size.

Size



300 x 200mm

Two finishes combine form and function.

Examples below are not to scale but have been enlarged to show detail:



Gloss



Satin

Five colours offering a neutral and contemporary palette.



Bianco Carrara



Matlock



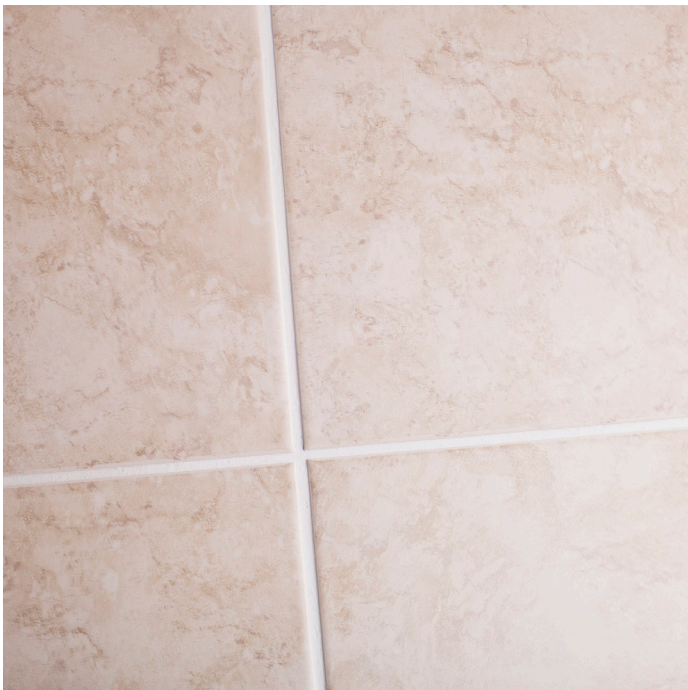
Horizon



Buxton



Bath



Sanctuary Horizon Gloss



Bianco Carrara

Bianco Carrara

Size	Finish	
	Gloss	Satin
300 x 200mm	CTBC1A	CTBC2A



Matlock

Matlock

Size	Finish	
	Gloss	Satin
300 x 200mm	MLOCKA	MLOCKS



Horizon

Horizon

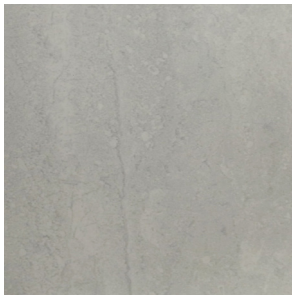
Size	Finish	
	Gloss	Satin
300 x 200mm	HOR101	-



Buxton

Buxton

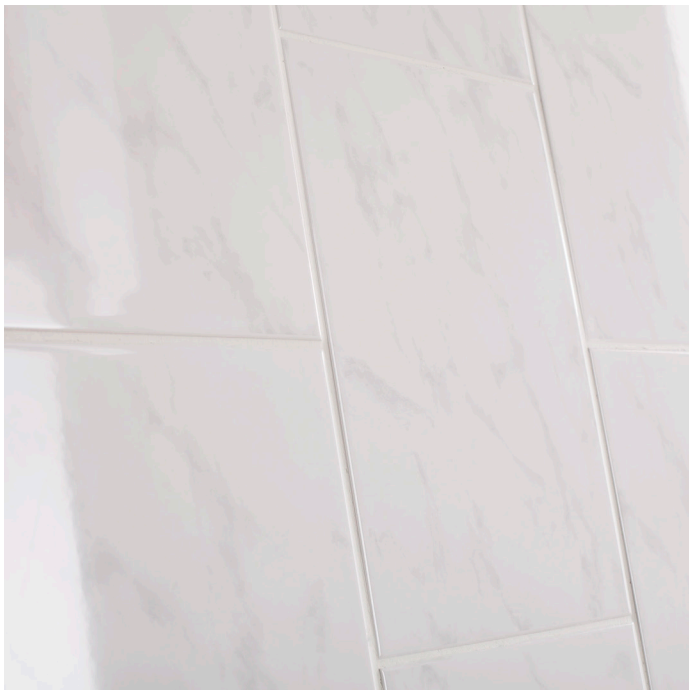
Size	Finish	
	Gloss	Satin
300 x 200mm	-	BXTONA



Bath

Bath

Size	Finish	
	Gloss	Satin
300 x 200mm	BATH1A	BATH2A



**Sanctuary Bianco Carrara
Gloss**

Sanctuary, inspired by classic marble patterns, they have the look and feel of the real thing. They're easier to install, clean, maintain and much more affordable.

For more details on suitability, or advice on any technical issues, please contact our technical helpline below.

Specification

Size - All sizes

Wall	Floor	Wet barefoot	Material	Finish
Internal	-	-	Glazed Ceramic	Various

Colour notations

Code	Colour	NCS	LRV
BATH1A	Bath	1000-N	74
BATH2A	Bath	1002-Y50R	73
CTBC1A/2A	Bianco Carrara	0500-N	86
BXTONA	Buxton	1005-Y50R	70
HORI01	Horizon	1005-Y20R	71
MLOCKA	MatLock	1005-Y20R	71
MLOCKS	MatLock	0603-Y40R	82

Note: These results are from Johnson Tiles' internal test reports and are to be used for guidance only. LRV: Light Reflectance Value (Reflectance Y).

Front cover image: **Sanctuary Bianco Carrara Satin**

Samples

Tel: +44 (0) 1782 524043
Fax: +44 (0) 1782 577379
Email: samples@johnson-tiles.com



Technical helpline

Tel: +44 (0) 1782 524111
Fax: +44 (0) 1782 577379
Email: techadvice@johnson-tiles.com

www.johnson-tiles.com

© 2017 Johnson Tiles.
All rights reserved.