

Effects on **Metal**

Inspiring Great Spaces™

**Armstrong**®  
CEILING SOLUTIONS

# Effects on Metal

## Key attributes:

- Suitable for prestigious high end projects
- 7 metal effects available: Ash, Oak, Red Oak, US Cherry, US Walnut, Bronze and Chrome
- 3 systems available: Q-Clip F, S-Clip F & Axal Vector
- Perforated or unperforated
- Configurable solutions available on request
- For any other effects, please contact us

### Bronze Effect



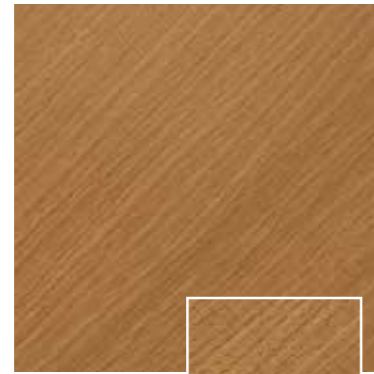
### Chrome Effect



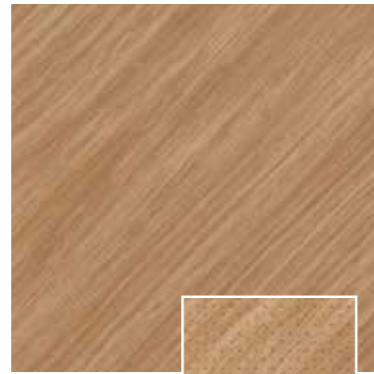
# Wood Effect



Ash



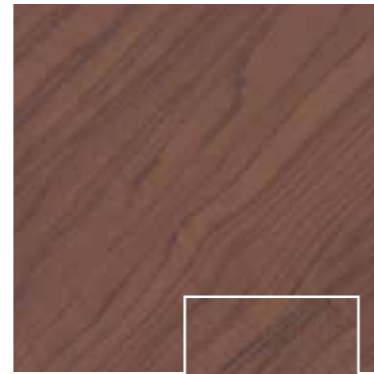
Oak



Red Oak



US Cherry

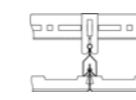


US Walnut

Meydan Centre, Dubai (UAE)

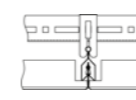
# Effects on Metal - Range

### Q-Clip F



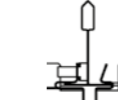
3 mm bevel

### S-Clip F



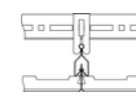
3 mm bevel

### Axal Vector



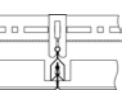
6 mm bevel

### Q-Clip F



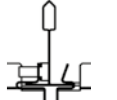
3 mm bevel

### S-Clip F



3 mm bevel

### Axal Vector



6 mm bevel

## Plain

Ash	600 x 600	2056 M ASH	9418 M ASH
Oak	600 x 600	2056 M OAK	9418 M OAK
Red Oak	600 x 600	2056 M ROA	9418 M ROA
US Cherry	600 x 600	2056 M CHE	9418 M CHE
US Walnut	600 x 600	2056 M WAL	9418 M WAL
Bronze	600 x 600	2056 M BZ	9418 M BZ
Chrome	600 x 600	2056 M AM	9418 M AM

Ash	300 x 1200	3707 M ASH
Oak	300 x 1200	3707 M OAK
Red Oak	300 x 1200	3707 M ROA
US Cherry	300 x 1200	3707 M CHE
US Walnut	300 x 1200	3707 M WAL
Bronze	300 x 1200	3707 M BZ
Chrome	300 x 1200	3707 M AM

## Rg 0701

Ash	600 x 600	2083 MF ASH	2118 MF ASH
Oak	600 x 600	2083 MF OAK	2118 MF OAK
Red Oak	600 x 600	2083 MF ROA	2118 MF ROA
US Cherry	600 x 600	2083 MF CHE	2118 MF CHE
US Walnut	600 x 600	2083 MF WAL	2118 MF WAL
Bronze	600 x 600	2083 MF BZ	2118 MF BZ
Chrome	600 x 600	2083 MF AM	2118 MF AM

Ash	300 x 1200	3716 MF ASH
Oak	300 x 1200	3716 MF OAK
Red Oak	300 x 1200	3716 MF ROA
US Cherry	300 x 1200	3716 MF CHE
US Walnut	300 x 1200	3716 MF WAL
Bronze	300 x 1200	3716 MF BZ
Chrome	300 x 1200	3716 MF AM

	Sustainability	Acoustics					Safe & Healthy				
	ISO 14021 Recycled content (%)	$\alpha_w$ up to	Sound absorption class	NRC up to	Dncw / Dnfw (dB) up to	Rw (dB) up to	Fire reaction	Humidity Resistance (%) up to	Cleanability	Bioguard paint option	Scratch resistance
Plain / Unperforated <sup>(1)</sup>	up to 30	0.10(L)	Not Classified	0.10	44	19	A2-s1, d0	95	scrubbable	✓	✓
Extra Microperforated Rg 0701 <sup>(2)</sup>	up to 30	0.55(L)	D	0.65	21	10	A2-s1, d0	95	wipeable moist cloth <sup>(3)</sup>	✓	✓



95 % RH



15YEAR guarantee



30YEAR system guarantee



5 kg/m<sup>2</sup> – Steel tile

(1) RAL 9010 colour, without acoustic inlay. (2) RAL 9010 colour, with black acoustic fleece glued on rear. (3) Wipeable moist cloth for perforated tiles with fleece. Scrubbable for plain tiles or perforated tiles without fleece.

PAS1302 - 04/2016 - Armstrong Building Products - R.C.S. Besançon B 784 131 575

**Advisory note**

All photographic and design elements supplied in this brochure do not necessarily reflect any recommendation by any of the companies named in this brochure as to the proper use or recommended methods of installation of suspended ceilings and are supplied only as informative material. For technical reasons in printing, differences may appear between colours printed in this brochure and the actual product. The choice of colours should always be made from a sample of the product. All statements and technical information contained in this brochure, or any publication of the companies named in this brochure, relating to Armstrong ceilings are based on results obtained under laboratory test conditions. **It is the responsibility of the user to verify with the seller of the products in writing that such statements and information are appropriate to the specific use intended.** Sales of the products and liability of the selling companies are in accordance with the terms and conditions of sale of the selling company. All product specifications are subject to modifications without prior notice.

[www.armstrongceilings.co.uk](http://www.armstrongceilings.co.uk)

[www.armstrongceilings.ie](http://www.armstrongceilings.ie)

Inspiring Great Spaces™

**Armstrong**<sup>®</sup>  
CEILING SOLUTIONS