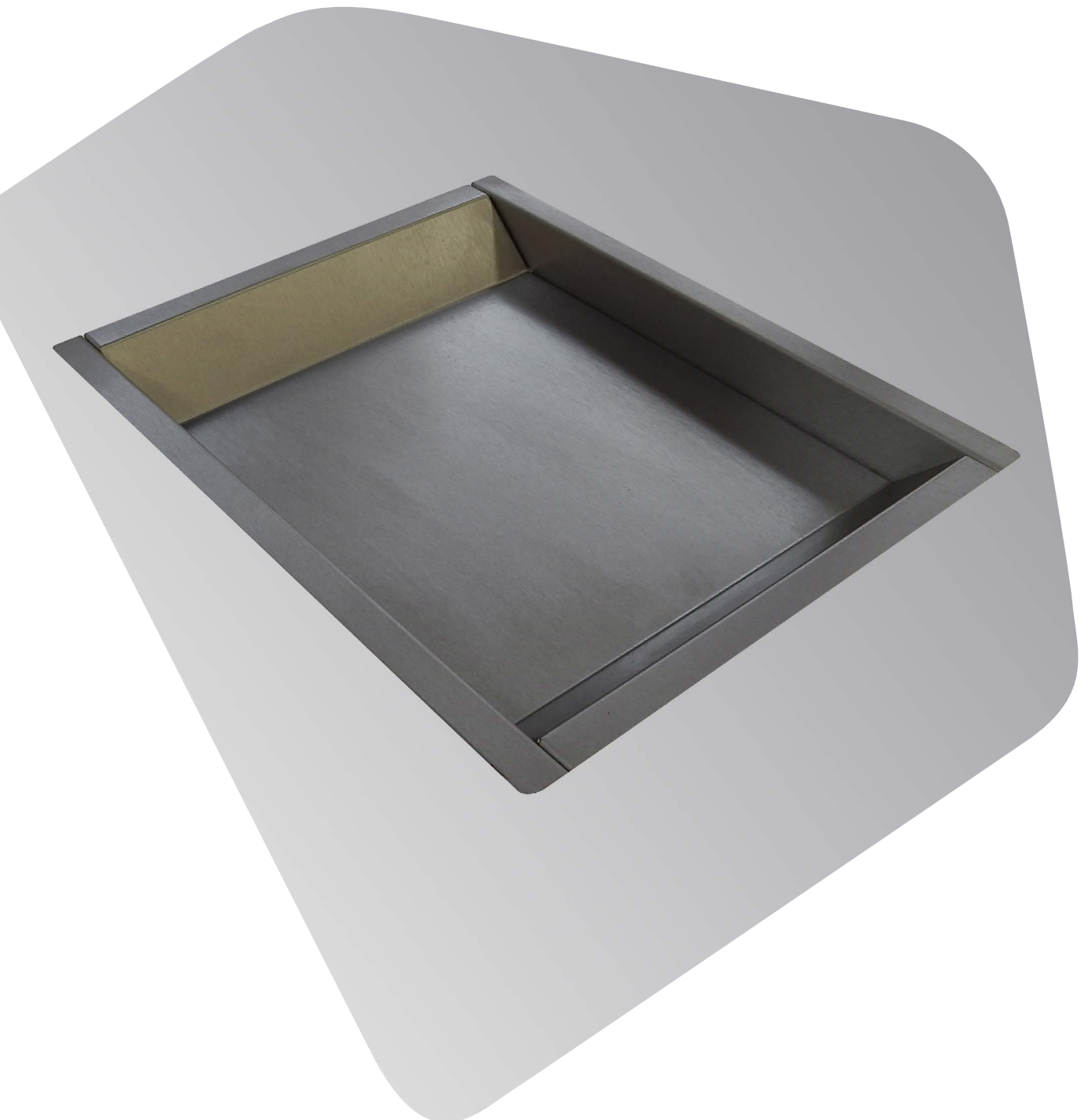




**Safetell**

SAFETY SECURITY PROTECTION

## Cash Scoop – Plain



# Cash Scoops - Plain

## Introduction

Safetell Cash Scoops are designed to enable the transaction of cash and documents under fixed glazing protecting staff from attack and robbery.

Three standard depths are typically immediately available from Safetell stock, subject to demand. Bespoke sizes can be manufactured to order.

Safetell cash scoops are constructed from stainless steel for durability.

## Alternate Safetell Cash Scoop Models & Speech Transfer Systems

- For Cash Scoops With Slider see the Safetell Cash Scoop With Slider brochure
- For Bullet Resistant Cash Scoops see the Safetell Bullet Resistant Cash Scoop brochure
- For electronic active speech transfer systems to accompany any Safetell cash scoops, see Safetell Speech Transfer System brochures

## Additional Safetell Capability

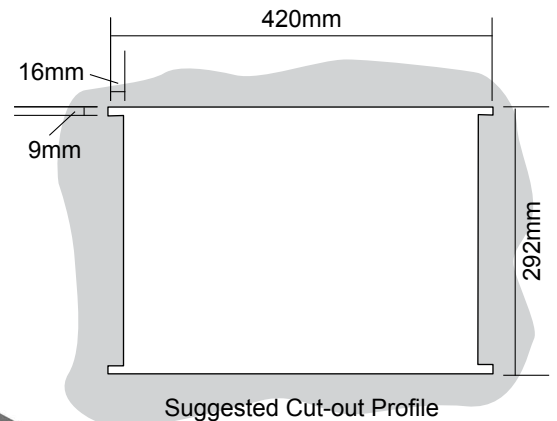
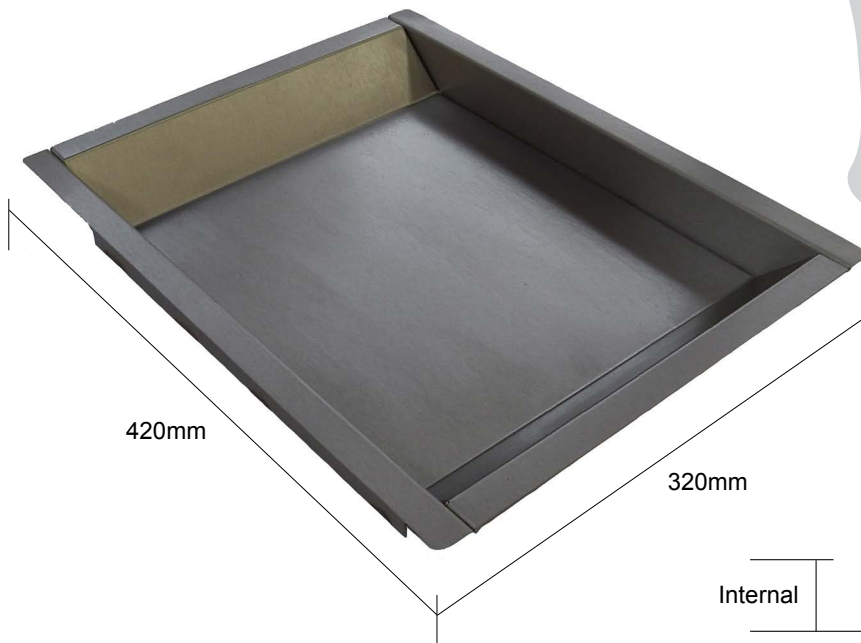
- Single module Safetell Paypoint security windows incorporating cash scoop
- Bullet or attack resistant secure-line security glazing and counterwork
- Bullet, attack, fire, fire exit, or blast resistant security doors, walls
- CCTV systems repair, maintenance, installation
- Access Control system repair, maintenance, installation
- Cashier tills, pedestals, and other cashier equipment

## FEATURES

- Low cost
- Stainless steel construction
- Three standard depths
- Immediate availability, subject to demand
- Bespoke sizes on request
- Alternate model with slider
- Alternate bullet resistant model

## APPLICATIONS

- Banks, Building Societies
- Local Authority service desks
- Government offices
- Embassies
- Any application with secure-line glazing



Available in three depth options:

	<i>Internal</i>	<i>Overall</i>
A:	40mm	50mm
B:	75mm	85mm
C:	110mm	120mm



Tel: 01322 22 32 33

Email: [sales@safetell.co.uk](mailto:sales@safetell.co.uk) Web: [www.safetell.co.uk](http://www.safetell.co.uk)

Safetell, 46 Fawkes Avenue, Dartford, Kent DA1 1JQ

VER: 25/03/2015



# Safetell

**SAFETY SECURITY PROTECTION**