

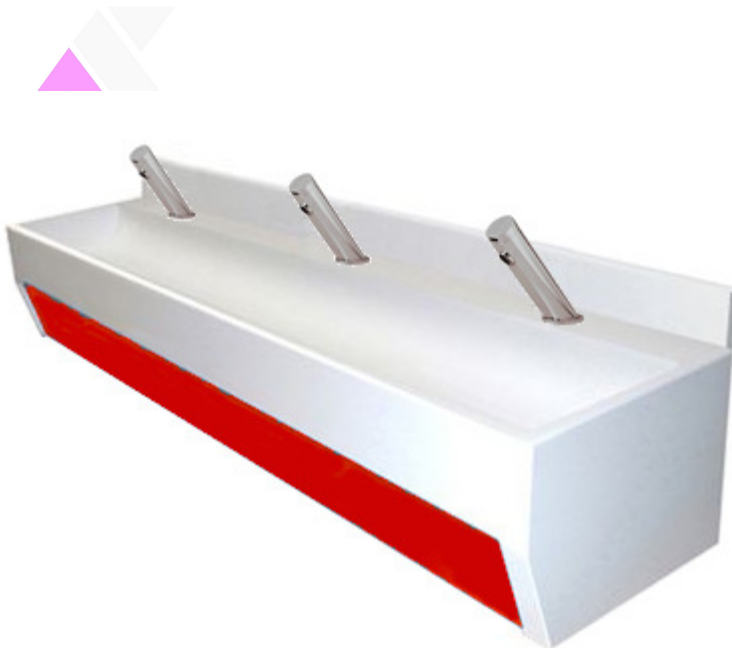


# SOLID SURFACE WASH TROUGH WALL MOUNTED

PRODUCT CODE

**382**

JANUARY 2015



## Special Features

- ▲ TAPLANDING DESIGNS
- ▲ EASY TO CLEAN AND MAINTAIN
- ▲ SMOOTH NON-PORUS HYGIENIC DESIGN
- ▲ WIDE CHOICE OF COLOURS
- ▲ WALL MOUNTED
- ▲ CAN BE SUPPLIED WITH OPTIONAL SENSOR TAPS OR MECHANICAL TAPS

## Description

The solid surface wash trough is ideally suited for use in schools, universities, nightclubs, bars, restaurants, office and hotel washrooms, where a modern aesthetically pleasing appearance is desired. The wash trough can be supplied in a choice of standard or special colours with a taplanding (for deck mounted outlets). The solid surface wash trough is designed for wall mounting and is supplied in a range of standard or special lengths.

## Construction

The wash trough is manufactured from a blend of acrylic resin, natural pigments and aluminium hydroxide to give a natural stone appearance. A two stage thermal curing process at high temperature gives the solid surface material superb strength and durability. The coloured wash trough is formed with a centre waste outlet and either an integral splashback or a taplanding with rear upstand. Each trough is supplied with a matching or contrasting coloured solid surface front fascia panel. If required the fascia panel can be supplied by others to match, for example, wall panels or cubicle colours. Available in five standard lengths or special lengths, all solid surface wash troughs are supplied with wall mounting brackets and an unslotted flush grated waste fitting.

## Sizes

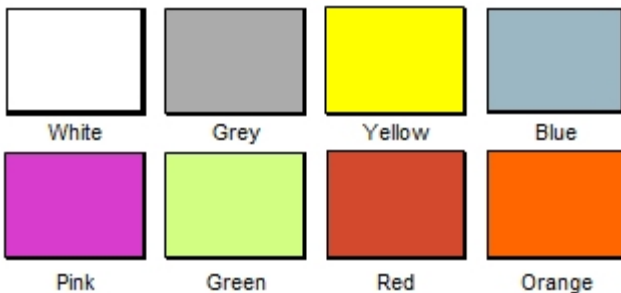
Available in standard lengths: 600 mm, 1200 mm, 1500 mm, 1800 mm and 2400 mm. Special order lengths can be supplied up to 2400 mm.

## Options

- ▲ Special colours
- ▲ "Non-Touch" sensor taps
- ▲ Mechanical taps

## Order Codes and Technical Specification

Please refer to the Technical Specification Sheet



Standard colours:  
These colours are an indicative  
guide only as colour rendition varies  
between screens and printers

