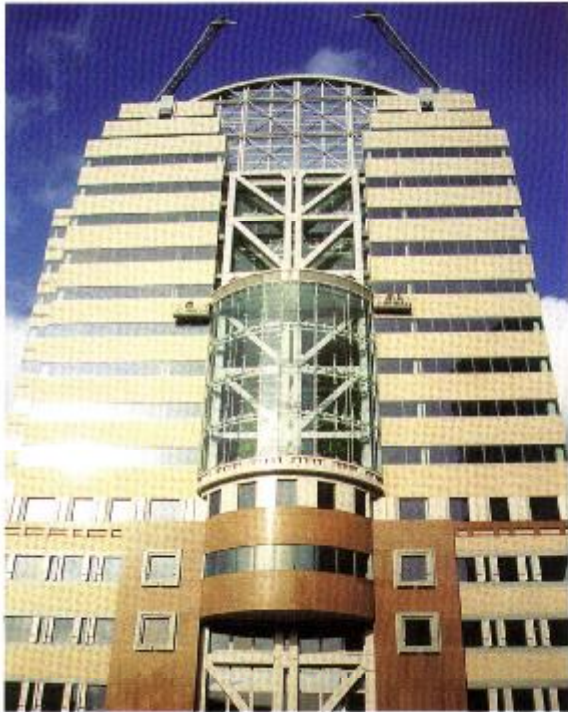




**Permanent access systems**

May 1993

**Power Access Systems is experienced in the design and manufacture of high quality suspended access equipment used for the cleaning and maintenance of all types of building facades. Each installation is custom-made to ensure that the precise requirements of the situation are satisfied.**



**GENERAL**

**Introduction** Permanent access equipment is essential for buildings with large areas of fenestration and can play an important role in the cost-effective maintenance and repair of most buildings.

Considerable experience in this specialist field enables Power Access Systems to offer solutions to most suspended access problems. Initial analysis of the client's access needs, including a site visit if an existing building is involved, is followed by preparation of outline drawings of suggested equipment.

**Applications** Suspended access equipment can be designed for virtually all types of building, both new and existing, and for internal as well as external usage. The company also undertakes the replacement of obsolete or unsatisfactory equipment.

Installations are tailored to the needs of the building and the budget available, and incorporate equipment ranging from chairs to sophisticated power operated transporters and cradles.

PK fully power operated installations range from very slim units operating in restricted passages to complex machines with extended reach. Transporters can be of the tracked type or designed to run on a concrete runway and special features can be incorporated.

Systems incorporating demountable access equipment suspended from permanently installed trolleys, monorails and davits can also be supplied.

