

RIDGE DETAILING

DUO PITCH RIDGEBOARD (PROFILED TILES)

WORKING PROCEDURE

Note: This system can be vented or non-vented using the appropriate top fillers

1. Ensure that the ridge board projects above the rafter intersection by the dimension in millimetres given in the table.

Note: The figures in the table are nominal and are based on a 30mm wide ridge board.

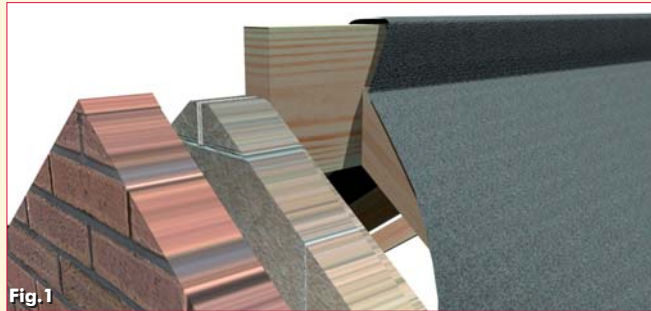


Fig.1

2. When constructing a vented ridge using a non vapour permeable (HR) underlay fix a mono pitch felt spacer to one side of the ridge board using a 25mm nail provided.

Secure the felt on the non-vented side to the ridge board.

Note: If the ridge is to be non-vented or when using a (LR) underlay then omit the mono pitch felt spacers and lap underlay over the ridge board. (Fig.1)

3. Lay the roofing felt to finish 15mm from the top of the felt spacers. (Fig.2)

Position the top tiling batten in the desired position, for the slate or tile.

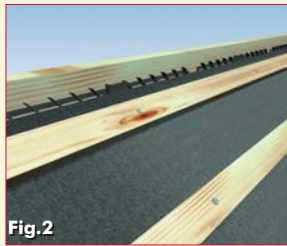


Fig.2

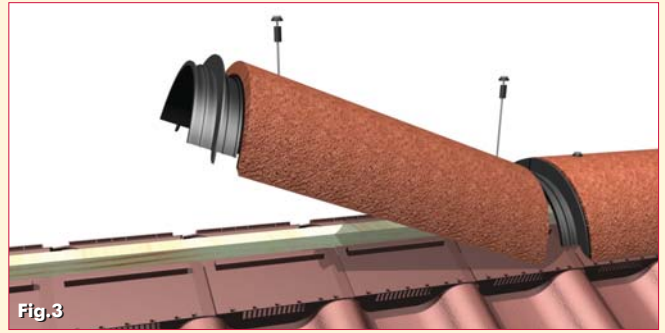


Fig.3

4. Tile the roof in the normal manner and lay either vented or non-vented top fillers on the top course of tiles or slates. Place a block end ridge at the gable end, positioning a ridge seal and subsequent top fillers before the placement and fixing of the next ridge tile and seal.

Note: The block end ridge must be secured with an 80mm hammer screw and integral washer through at least one of its nail-holes. The unused nail-hole should be sealed with a silicone sealant.



Fig.4

5. Secure each ridge tile using 2x80mm hammer screws and integral washer provided making sure that the washer makes a watertight seal over the nail-hole.)

PROJECTION OF RIDGE BOARD ABOVE RAFTER									
Rafter Pitch	12.5°	15°	17.5°	22.5°	25°	30°	35°	40°	45°
Centurion	120	120	105	105	105	95	95	95	83
Senator	-	-	105	105	105	95	95	95	83
V2	-	-	105	105	105	95	80	80	70

Figures given in this table are nominal and based on a 30mm wide ridgeboard.

RIDGE COMPONENTS PROVIDE 5,000mm²/m OF VENTILATION

Standard half-round nail hole ridge

Block end nail hole Ridge

Ridge level felt spacer (mono pitch)

Ridge seals

Centurion/Senator top fillers

V2 Top Fillers

Dimensions shown in millimetres