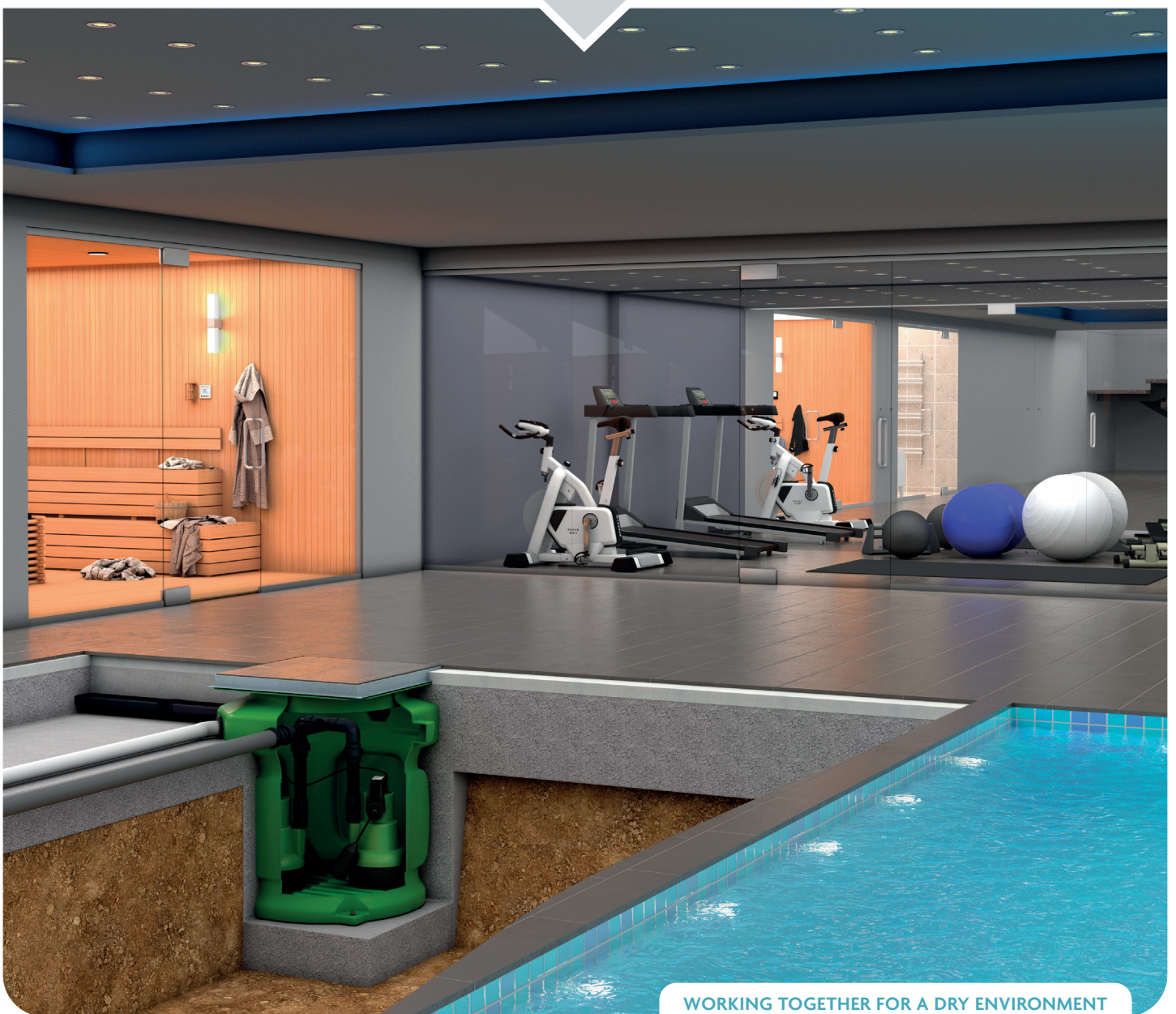


# The Complete Guide to Pumped Drainage Systems



# WELCOME TO WYKAMOL

## MARKET LEADER FOR OVER 85 YEARS

The **Wykamol Group** has been the market leader in the development and supply of products for the property renovation and repair industry for more than 85 years

Starting way back with our founder devising a chemical treatment for the eradication of insect attack in timber, our product range has evolved and grown to become the broadest range of property repair and renovation solutions under one umbrella anywhere in the UK.

Our unrivalled range includes products for use in basement waterproofing, damp treatment, gas proofing, wood preservation and protection, cellar conversions and tanking.

Such is the strength of our name, Wykamol products are now distributed and used throughout Europe, Africa, the Middle East and Australia.

### **Access to Some of the Best Technical Advice in the UK**

Supporting our customers at every stage is something that we pride ourselves on at the Wykamol Group, and our Technical Support, in particular, is second-to-none.

We offer a bespoke design service across 3 sectors of the Construction Industry: Damp and Timber, Structural Repairs and Structural Waterproofing.

To coincide with this service we also offer regular theoretical training courses to Contractors, Architects and Engineers, to ensure everyone in the industry is kept informed regarding new building legislation and best practice.

The Wykamol Group employ staff from various technical backgrounds including Chemists, Surveyors and Structural Waterproofing Specialists who are all on hand to provide technical advice and training. In addition, Wykamol have an ongoing programme of continual staff development and were recently the proud winners of the Property Care Association staff training award.

### **Access to State-of-the-Art Facilities**

The Wykamol Group's wide-ranging facilities, including a £2 million powder plant and state-of-the-art laboratory, not only aid the development of our innovative products, but our highly qualified Chemists regularly perform sample analysis on behalf of Contractors. Detailed reports are completed to aid in the identification of remedial issues which may be difficult to diagnose.

Sample testing removes the need for guess work, ensuring the correct solution is identified from the start of a project, saving time and money.

In 2018 we invested a further £2.5 million in a membrane extrusion plant, allowing us to manufacture Type C Cavity Drain Membranes in the UK. The extruder uses the latest in technology to mould 100% virgin HDPE into waterproofing and damp-proofing membranes, which are now used across the UK in hundreds of renovation and new build projects.

## Drainage

**Wykamol can supply everything you need to ensure a successful job. We have a complete range of treatments, waterproof membrane, sump pumps and drainage systems.**

**Wykamol have teamed up with a major drainage specialist company to design a bespoke range of products for the basement conversion industry.**

**The range includes products for both ground water and foul waste along with a host of backup solutions.**



# WE HAVE THE SOLUTION FOR EVERY PROBLEM



## GROUND WATER SYSTEMS

ProSump	8-9
ProSump Twin	10-11
ProSump BBPS	12-13
ProSump Twin BBPS	14-15
ProSump Kits and Accessories	16
Black Sump	18-19
SumpFlo 200	20-21
SumpFlo 200 Twin	22-23

## FOUL WATER SYSTEMS

DrainFlo 150	26-27
DrainFlo 200	28-29
DrainFlo 360	30-31
DrainFlo 360 Twin	32-33

## HIGH LEVEL ALARMS & BATTERY BACK-UP SYSTEMS

High Level Alarm 9 Volt	34
Aquasafe Alarm	34
UPS 2000 - 3000	35
PowerFlo	36
PowerShield	37

After sales	38
Notes	39

# GROUND WATER SYSTEMS

## INTRODUCTION

The construction sector continues to see significant growth in basement applications as homeowners seek to expand their living space.

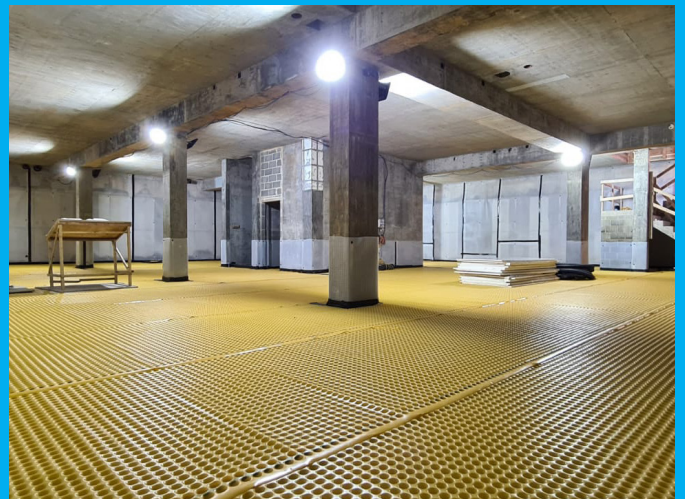
Wykamol will work with you to design the perfect pumped solution ensuring that all aspects of your drainage are considered.

The **SumpFlo** range is designed to offer a fully automatic pumped solution for the ground water from a cavity membrane system, and/or surface water from a light well. The compact and uniquely designed chamber offers simple installation, while the reliable submersible pumps offer a long service life and peace of mind for the end user.

The **DrainFlo** range is designed to provide a similar solution but for foul waste such as from bathrooms, kitchens and utility areas. Using robust submersible pumps the **DrainFlo** range allows the client to maximise the facilities in their basement to the full.

All Wykamol pump stations are available with a range of accessories including alarms, telemetric systems, as well as battery backup to ensure the pump stations can run in the event of a loss of mains power.

With the **SumpFlo** and **DrainFlo** ranges, Wykamol can assist you with all your basement pumped drainage requirements.







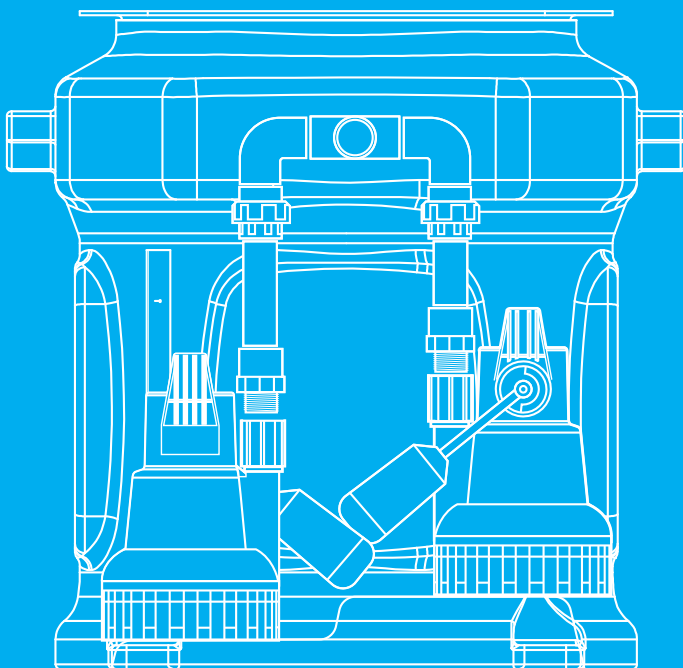
# GROUND WATER SYSTEMS

## PROSUMP

The Wykamol PROSUMP is a range of fully automatic waste water pump stations, suitable for pumping ground water from a cavity membrane systems and or surface water from light wells to a higher level.

The Prosump range comprises of a polyethylene chamber, access cover (pedestrian duty), one or two powerful submersible pump, with a wide range of battery backup and high level alarm options available.

The system is very versatile, enabling the installer to locate inlets to their specifications.

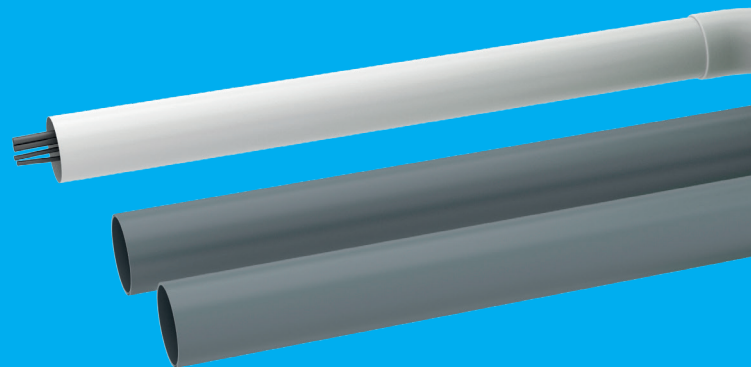


### NEW NECK EXTENSIONS

Neck extension to accommodate variation in flooring thickness above concrete slab. Scribed for easy cutting.

### SINGLE OR TWIN DISCHARGE

Twin pump systems can be configured for single or twin discharge depending on the choice of pipework kit.



### FLOAT BRACKET FIXING

The chamber features integrated fixing point for stainless steel float bracket, with pre-formed drill points.

### ROBUST CONSTRUCTION

Tank-grade virgin polyethylene chamber. Its structure has been fine-tuned by finite element analysis to withstand hydrostatic pressure.

### STEPPED BASE

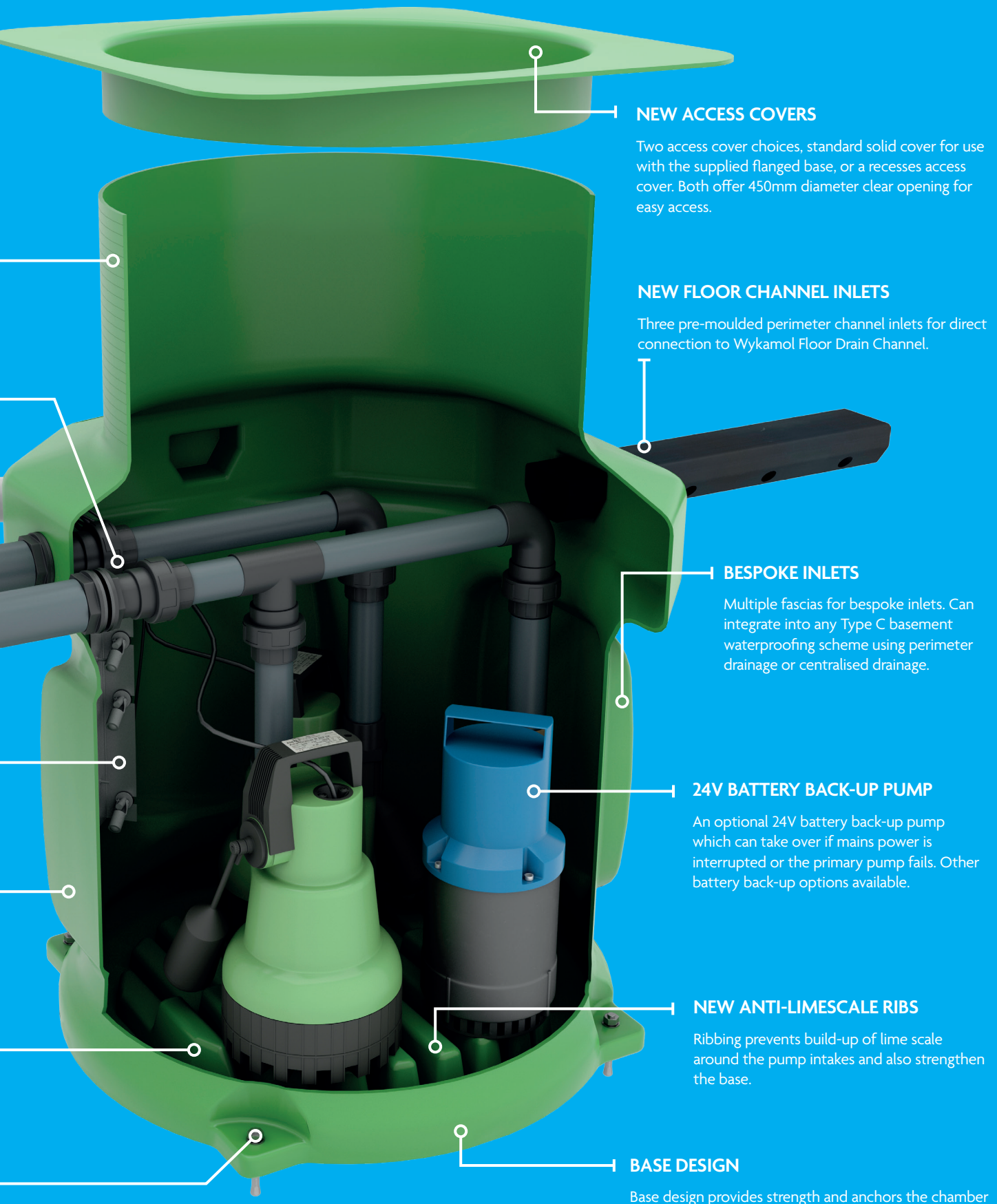
Stepped base so that the pumps sit at different levels, 35mm apart.

### NEW GUIDED HOLES

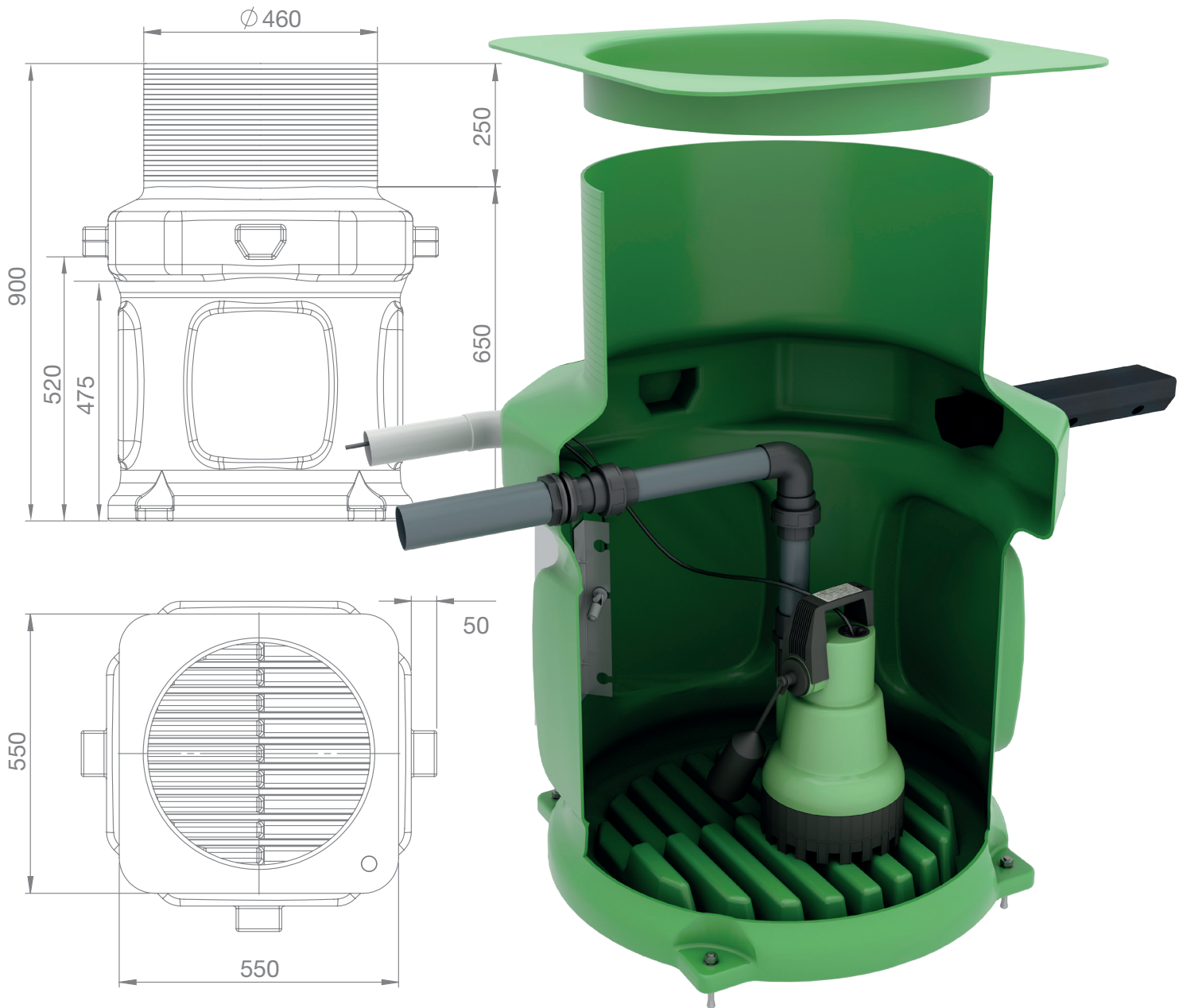
To provide additional anchoring options



# PROSUMP KEY FEATURES



# PROSUMP



## INFO

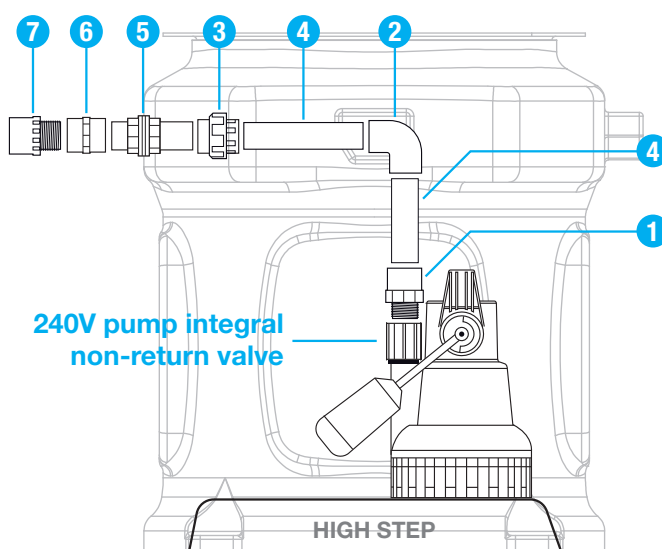
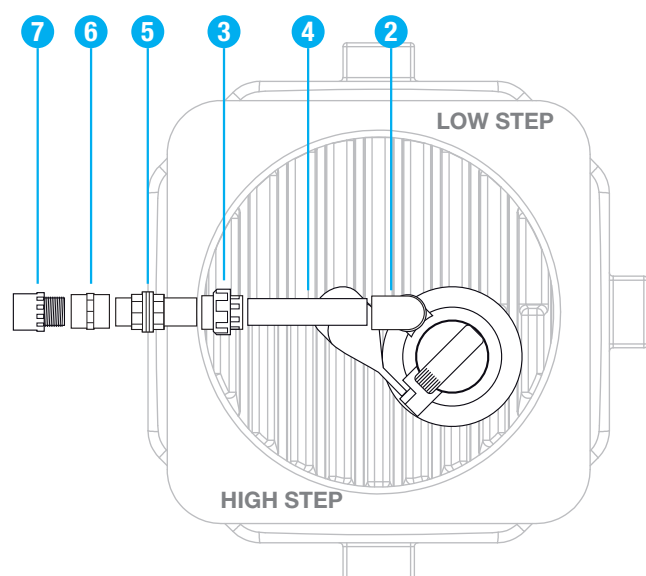
The **ProSump™** is specially designed for the removal of groundwater from basement cavity drainage membrane systems. The system comprises of a polyethylene chamber, stainless steel float bracket, 1¼" PVC internal pipework and a powerful 240V submersible pump. The system is very versatile, enabling the installer to locate inlets to their specifications.

The system comes with a choice of solid top or recessed access covers. It is recommended that a High Level Alarm product is installed, which acts as a warning system to alert the end user if the water rises above the normal operating level within the chamber. High Level Alarm kits can be purchased to installer specifications.





## PIPE WORK KIT A (SINGLE PUMP CONFIGURATION)

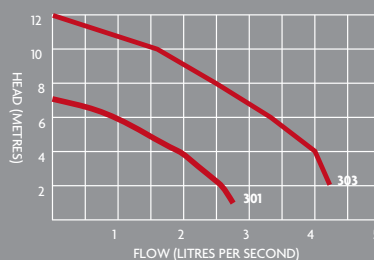


No.	Qty.	Part description	Qty supplied in Kit	Part code
1	1	PVC 1 1/4" Male Threaded Adaptor	1	8023
2	1	PVC 1 1/4" Elbow PL/PL (90degree)	1	8022
3	1	PVC 1 1/4" Socket Union PL/PL	1	8027
4	1	PVC 1 1/4" Class E Pressure Pipe 0.5mtr	1	8024L
5	1	PVC 1 1/4" Tank Connector	1	8028
6	1	PVC 1 1/4" Coupling Female TH/TH	1	8030
7	1	32mm Male Iron	1	9010

## TECHNICAL DATA

MODEL	301	303
Power Supply	230V AC	230V AC
Rated Current	1.9A	4.9A
Motor Rating	180W	500W
Frequency	50Hz	50Hz
Revs Per Minute	2720rpm	2800rpm
Max. Vert. Output	7m	12m
Max. Horiz. Output	50m	100m
Max. Flow Rate	168l/m	240l/m
Max. Liquid Temp.	<40°C	<40°C
Discharge Size	32mm	32mm
Cable Length	5m	5m
Weight	14kg	14.5kg
Colour	Green	Green

## PUMP CURVE



## DIMENSIONS

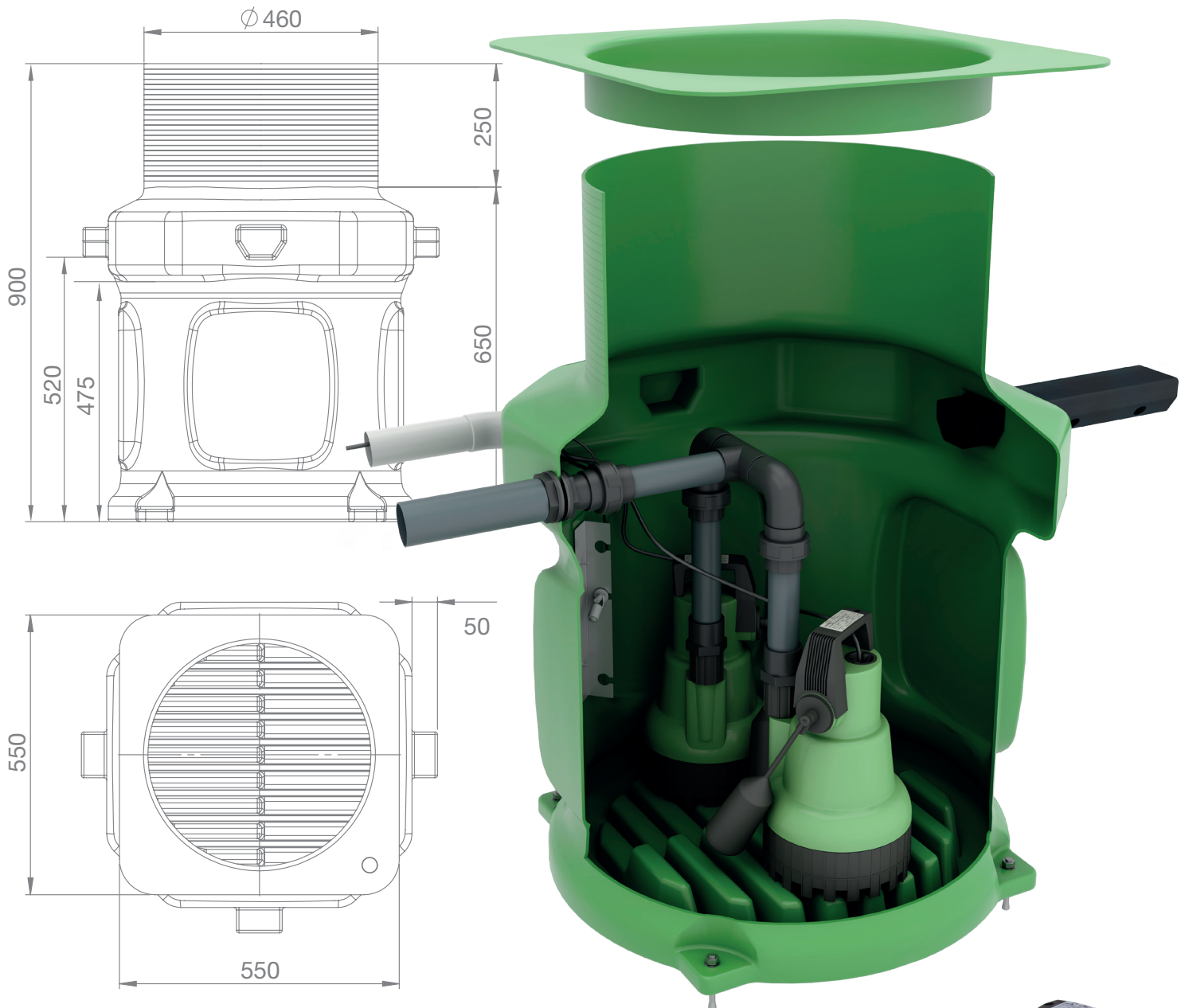
MODEL	PROSUMP
Height / Diameter (mm)	600 x 600
Clear opening (mm)	350 x 350

## KEY FEATURES

- Easy to install
- Odour tight locking access cover
- Variable inlet positions
- Integral non-return valve preventing back flow
- Durable polyethylene tank
- Pre-moulded flotation points preventing movement below ground
- Integral step for dual pump setup
- Powerful submersible pump

key

# PROSUMP TWIN (SINGLE DISCHARGE)



## INFO

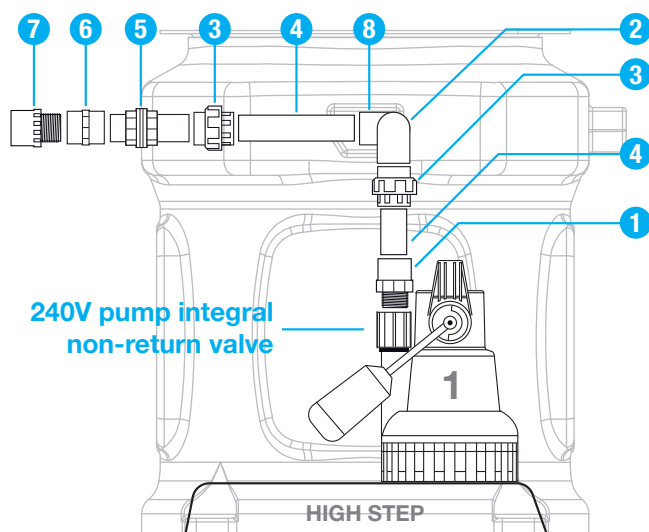
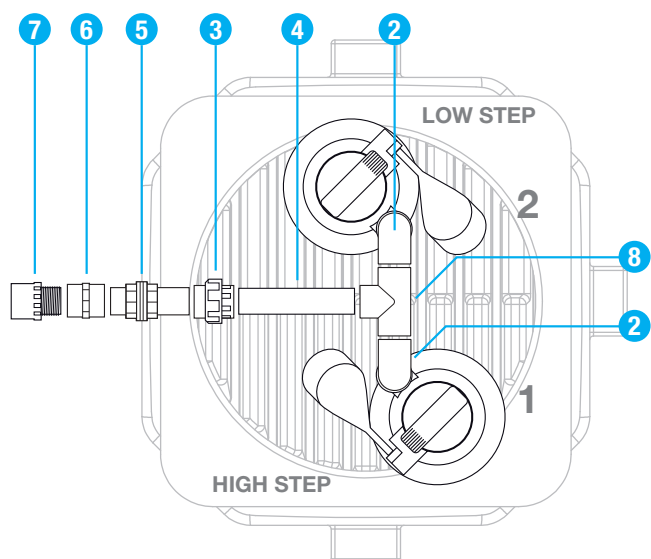
**The ProSumpTwin™** is specially designed for the removal of groundwater from basement cavity drainage membrane systems. The system comprises of a polyethylene tank, locking access cover (pedestrian duty, not suitable for roadways) and two powerful submersible pumps. The system is very versatile, enabling the installer to locate inlets to their specifications.

The system comes with a choice of solid top or recessed access covers. It is recommended that a High Level Alarm product is installed, which acts as a warning system to alert the end user if the water rises above the normal operating level within the chamber. High Level Alarm kits can be purchased to installer specifications. 1¼" PVC pipework configuration is available in single and twin discharge options, upon request.





## PIPE WORK KIT A+B (TWIN PUMP CONFIGURATION, SINGLE DISCHARGE)

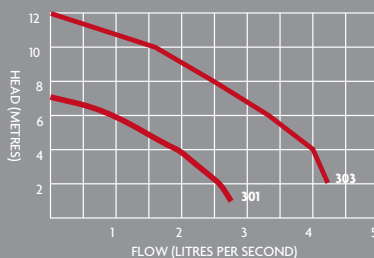


No.	Qty.	Part description	Qty supplied in Kit	Part code
1	2	PVC 1 1/4" Male Threaded Adaptor	1	8023
2	2	PVC 1 1/4" Elbow PL/PL (90degree)	1	8022
3	3	PVC 1 1/4" Socket Union PL/PL	2	8027
4	2	PVC 1 1/4" Class E Pressure Pipe 0.5mtr	1	8024L
5	1	PVC 1 1/4" Tank Connector	0	8028
6	1	PVC 1 1/4" Coupling Female TH/TH	0	8030
7	1	32mm Male Iron	0	9010
8	1	PVC 1 1/4" Tee Piece	1	8032

## TECHNICAL DATA

MODEL	301	303
Power Supply	230V AC	230V AC
Rated Current	1.9A	4.9A
Motor Rating	180W	500W
Frequency	50Hz	50Hz
Revs Per Minute	2720rpm 2	800rpm
Max. Vert. Output	7m	12m
Max. Horiz. Output	50m	100m
Max. Flow Rate	168l/m	240l/m
Max. Liquid Temp.	<40°C	<40°C
Discharge Size	32mm	32mm
Cable Length	5m	5m
Weight	20kg	21kg
Colour	Green	Green

## PUMP CURVE



## DIMENSIONS

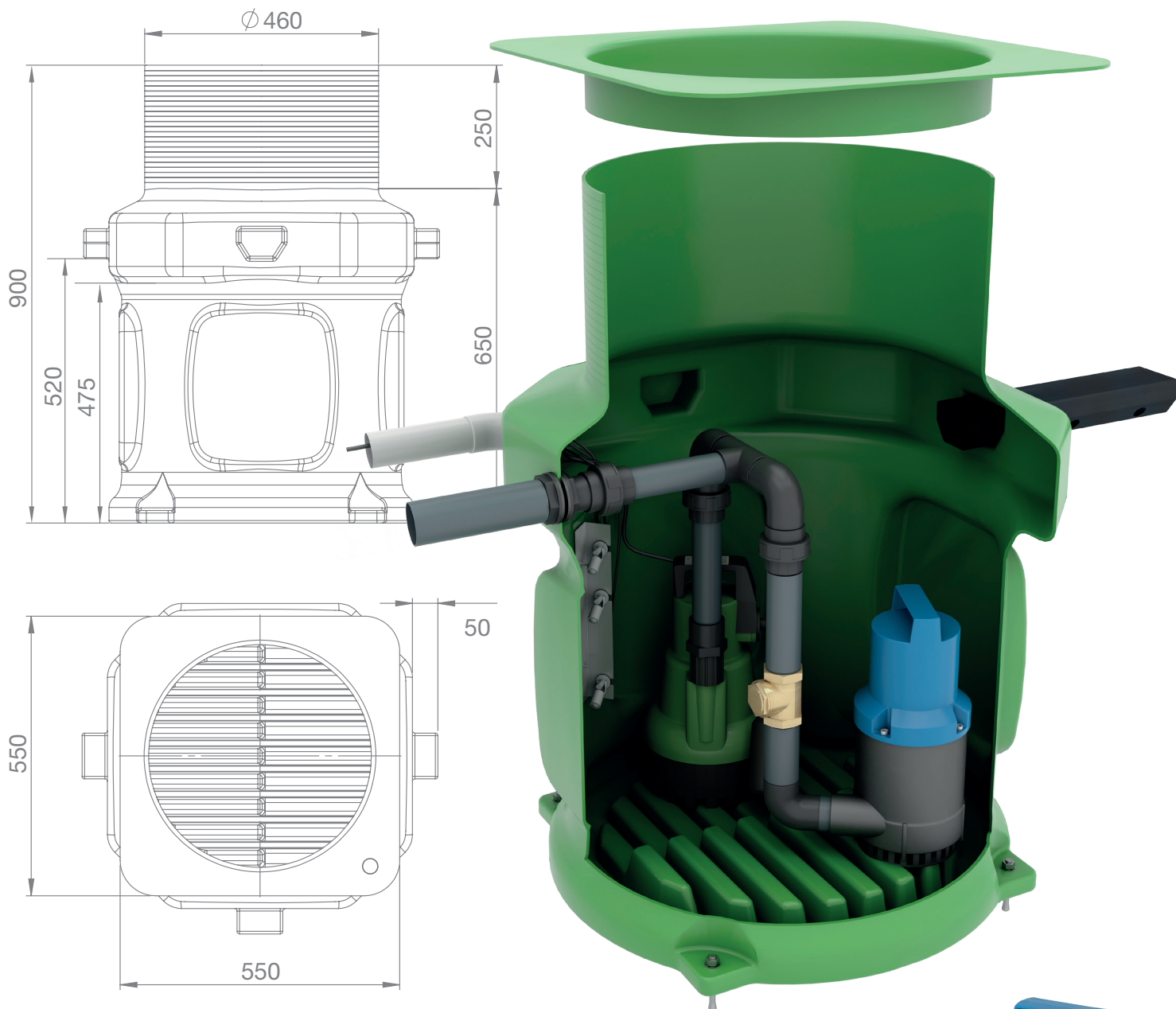
MODEL	PROSUMP TWIN
Height / Diameter (mm)	600 x 600
Clear opening (mm)	350 x 350

## KEY FEATURES

- Easy to install
- Odour tight locking access cover
- Variable inlet positions
- Integral non-return valve preventing back flow
- Durable polyethylene tank
- Pre-moulded flotation points preventing movement below ground
- Integral step for dual pump setup
- Powerful submersible pumps

key

# PROSUMP BBPS (BATTERY BACKUP SYSTEM)



## INFO

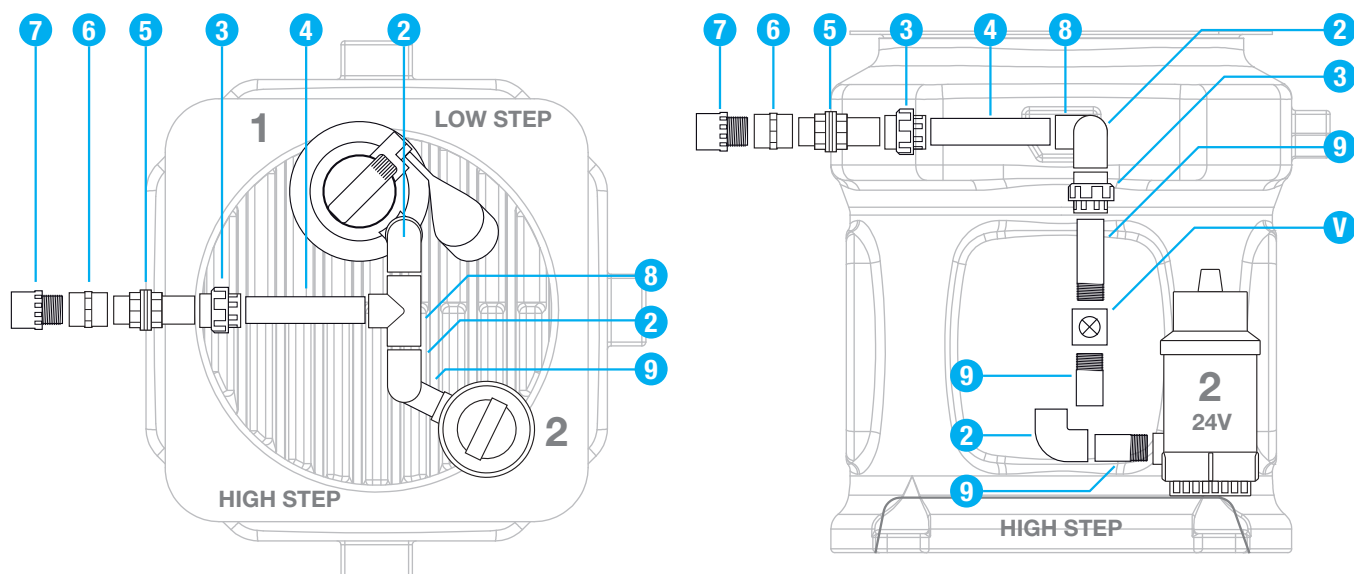
The **ProSump BBPS™** is specially designed for the removal of groundwater from basement cavity drainage membrane systems. The system comprises of a polyethylene tank, locking access cover (pedestrian duty, not suitable for roadways), powerful submersible pump and 24V backup pump. The system is very versatile, enabling the installer to locate inlets to their specifications.

The system comes complete with a battery back-up pump system, which is designed especially for where the possibility of primary pump failure through either a pump fault or loss of mains power would be catastrophic. The system acts as a back-up that will alert the end user if the water rises above the normal operating level within the tank and will activate a 24V back-up pump. Available in single and twin discharge configuration.





## PIPE WORK KIT A+D (TWIN PUMP CONFIGURATION, TWIN DISCHARGE)

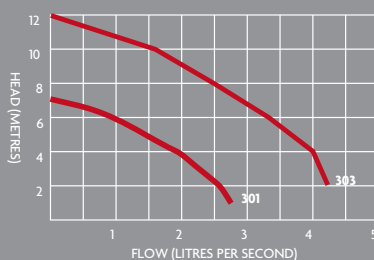


No.	Qty.	Part description	Qty supplied in Kit	Part code
1	2	PVC 1 1/4" Male Threaded Adaptor	1	8023
2	2	PVC 1 1/4" Elbow PL/PL (90degree)	1	8022
3	2	PVC 1 1/4" Socket Union PL/PL	1	8027
4	2	PVC 1 1/4" Class E Pressure Pipe 0.5mtr	1	8024L
5	2	PVC 1 1/4" Tank Connector	1	8028
6	2	PVC 1 1/4" Coupling Female TH/TH	1	8030
7	2	32mm Male Iron	1	9010

## TECHNICAL DATA

MODEL	301	303
Power Supply	230V AC	230V AC
Rated Current	1.9A	4.9A
Motor Rating	180W	500W
Frequency	50Hz	50Hz
Revs Per Minute	2720rpm	2800rpm
Max. Vert. Output	7m	12m
Max. Horiz. Output	50m	100m
Max. Flow Rate	168l/m	240l/m
Max. Liquid Temp.	<40°C	<40°C
Discharge Size	32mm	32mm
Cable Length	5m	5m
Weight	27kg	27.5kg
Colour	Green	Green

## PUMP CURVE



## DIMENSIONS

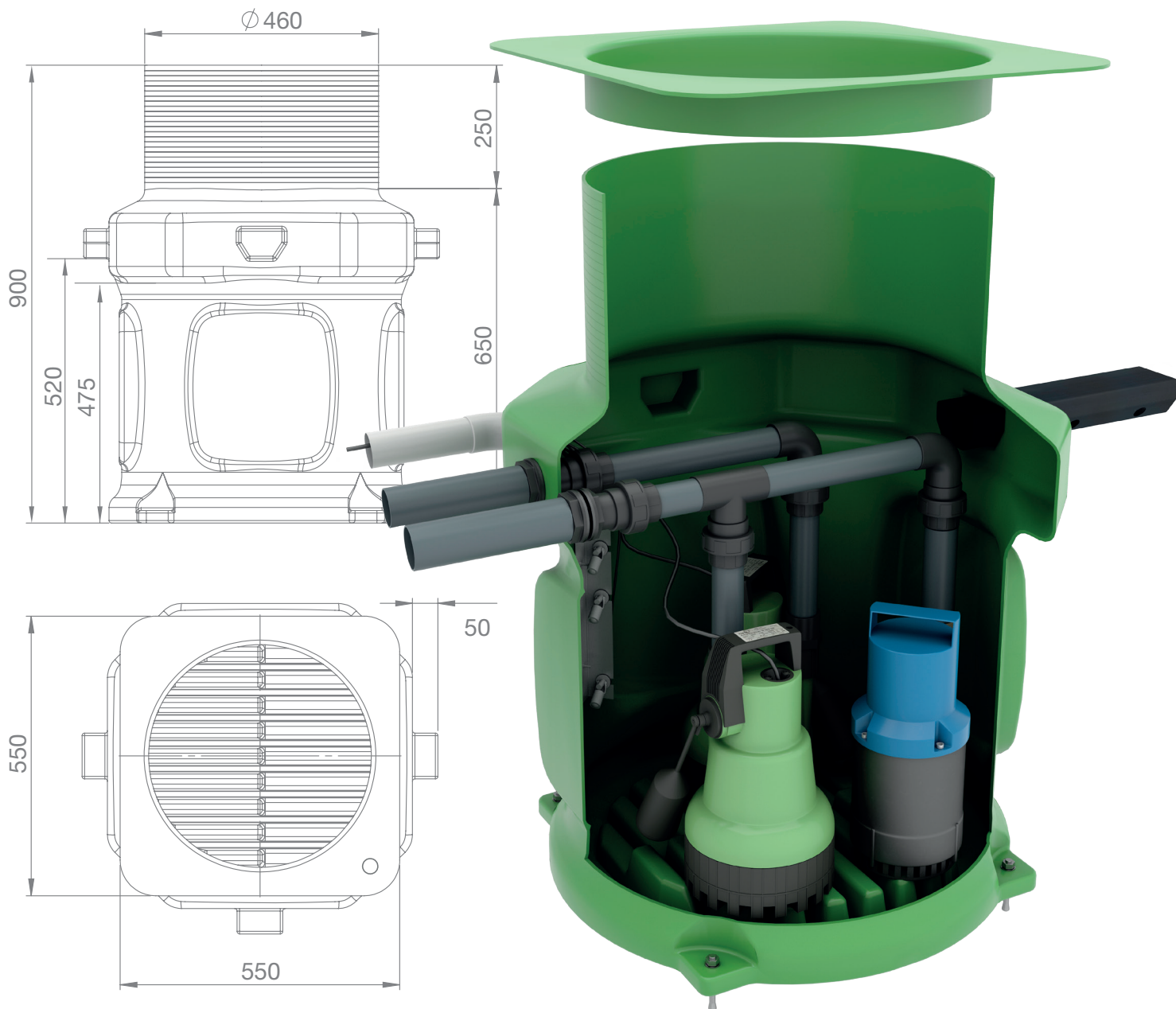
MODEL	PROSUMP BBPS
Height / Diameter (mm)	600 x 600
Clear opening (mm)	350 x 350

## KEY FEATURES

- Easy to install
- Odour tight locking access cover
- Variable inlet positions
- Integral non-return valve preventing back flow
- Durable polyethylene tank
- Pre-moulded flotation points preventing movement below ground
- Integral step for dual pump setup
- Powerful submersible pump

key

# PROSUMP TWIN BBPS (BATTERY BACKUP SYSTEM)



## INFO

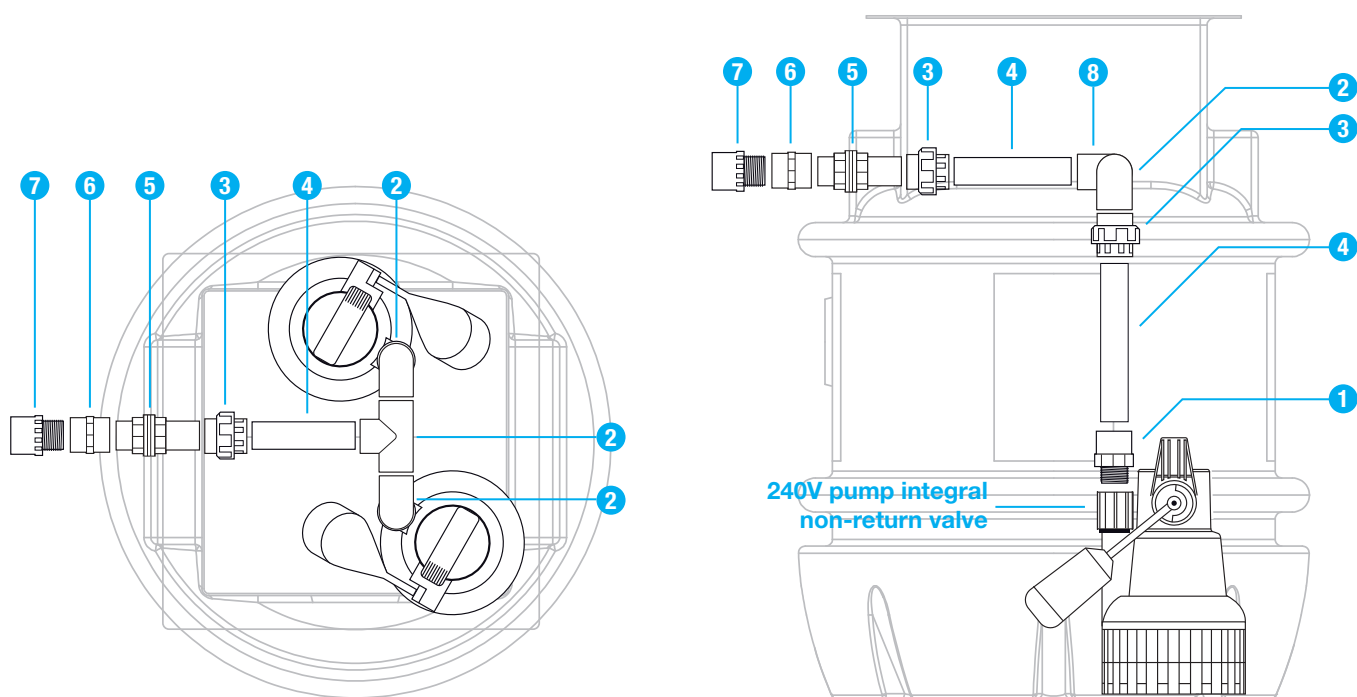
The **ProSump Twin BBPS™** is specially designed for the removal of groundwater from basement cavity drainage membrane systems. The system comprises of a polyethylene tank, locking access cover (pedestrian duty, not suitable for roadways), 2 no. powerful submersible pumps and 24V backup pump. The system is very versatile, enabling the installer to locate inlets to their specifications.

The system comes complete with a battery back-up pump system, which is designed especially for where the possibility of primary/secondary pump failure through either a pump fault or loss of mains power would be catastrophic. The system acts as a back-up that will alert the end user if the water rises above the normal operating level within the tank and will activate a 24V back-up pump. Comes standard with twin discharge.





## PIPE WORK KIT A-F (TWIN PUMP CONFIGURATION, TWIN DISCHARGE)

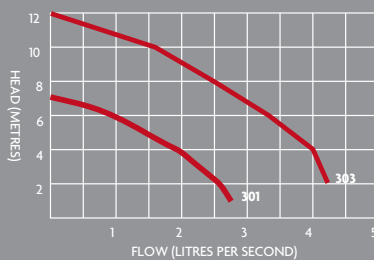


No.	Qty.	Part description	Qty supplied in Kit	Part code
1	2	PVC 1 1/4" Male Threaded Adaptor	1	8023
2	2	PVC 1 1/4" Elbow PL/PL (90degree)	1	8022
3	2	PVC 1 1/4" Socket Union PL/PL	1	8027
4	2	PVC 1 1/4" Class E Pressure Pipe 0.5mtr	1	8024L
5	2	PVC 1 1/4" Tank Connector	1	8028
6	2	PVC 1 1/4" Coupling Female TH/TH	1	8030
7	2	32mm Male Iron	1	9010

## TECHNICAL DATA

MODEL	301	303
Power Supply	230V AC	230V AC
Rated Current	1.9A	4.9A
Motor Rating	180W	500W
Frequency	50Hz	50Hz
Revs Per Minute	2720rpm	2800rpm
Max. Vert. Output	7m	12m
Max. Horiz. Output	50m	100m
Max. Flow Rate	168l/m	240l/m
Max. Liquid Temp.	<40°C	<40°C
Discharge Size	32mm	32mm
Cable Length	5m	5m
Weight	34kg	35kg
Colour	Green	Green

## PUMP CURVE



## DIMENSIONS

MODEL	PROSUMP TWIN BBPS
Height / Diameter (mm)	600 x 600
Clear opening (mm)	350 x 350

## KEY FEATURES

- Easy to install
- Odour tight locking access cover
- Variable inlet positions
- Integral non-return valve preventing back flow
- Durable polyethylene tank
- Pre-moulded flotation points preventing movement below ground
- Integral step for dual pump setup
- Powerful submersible pumps

key

# PROSUMP KITS AND ACCESSORIES

## ProSump™ Kit (All versions)

CHAMBER C/W FLOAT BRACKET



240V SUBMERSIBLE PUMP - 301 OR 303



9V HIGH LEVEL ALARM



PIPEWORK KIT A



## ProSumpTwin™ (Single discharge) Pipework

PIPEWORK KIT A



PIPEWORK KIT B



## ProSumpTwin™ (Twin discharge) Pipework

PIPEWORK KIT A

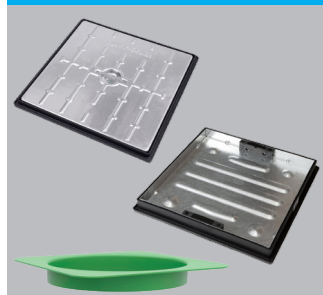


PIPEWORK KIT C



## Accessories (All versions)

ACCESS COVER, SOLID TOP OR RECESSED



AQUASAFE ALARM MINI



50MM RUBBER WALL SEAL



UPS 2000



1¼" BRASS GATE VALVE



MICRO FLOAT SWITCH



110MM RUBBER WALL SEAL



UPS 3000









# BLACK SUMP



## INFO

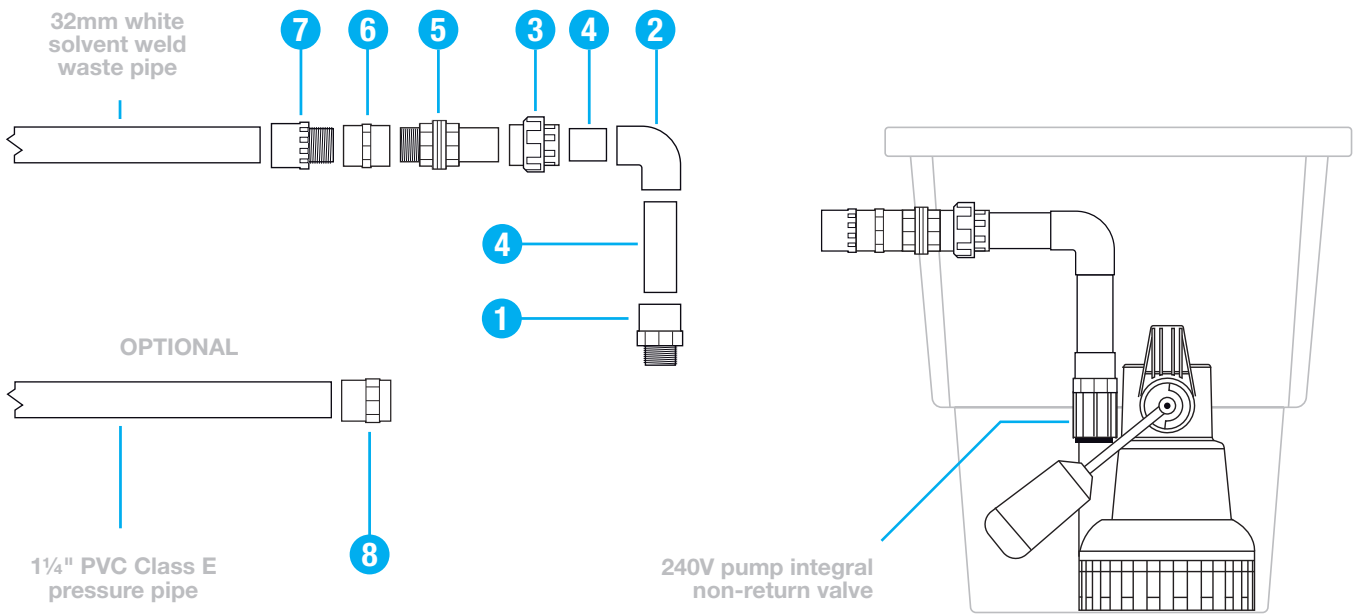
The **BlackSump™** is especially designed for the removal of groundwater from basement membrane systems. The system comprises of a polypropylene tank, circular locking access cover (pedestrian duty, not suitable for roadways) and a powerful submersible pump.

The system is very versatile, enabling the installer to locate inlets to their specifications.

The system comes complete with a High Level Alarm (9V), which acts as a warning system to alert the end user if the water rises above the normal operating level within the tank.

The alarm is designed to activate via a separate float switch.

PIPE WORK KIT

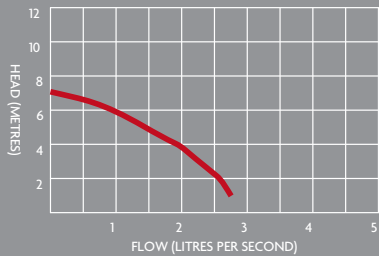


No.	Part description	Qty supplied in Kit	Part code
1	PVC 1 1/4" Male Threaded Adaptor	1	8023
2	PVC 1 1/4" Elbow PL/PL (90degree)	1	8022
3	PVC 1 1/4" Socket Union PL/PL	1	8027
4	PVC 1 1/4" Class E Pressure Pipe 0.5mtr	1	8024L
5	PVC 1 1/4" Tank Connector	1	8028
6	PVC 1 1/4" Coupling Female TH/TH	1	8030
7	32mm Male Iron	1	9010
8	PVC 1 1/4" Coupling Female TH/PL	1	8072

TECHNICAL DATA

<b>MODEL</b>	<b>BLACK SUMP</b>
Power Supply	230V AC
Rated Current	1.9A
Motor Rating	180W
Frequency	50Hz
Revolutions Per Min.	2720rpm
Max Vertical Output	7m
Max Horizontal Output	50m
Max Flow Rate	168l/m
Max Liquid Temp.	<40°C
Discharge Size	32mm
Cable Length	5m
Weight	11kg
Colour	Black

PUMP CURVE



DIMENSIONS

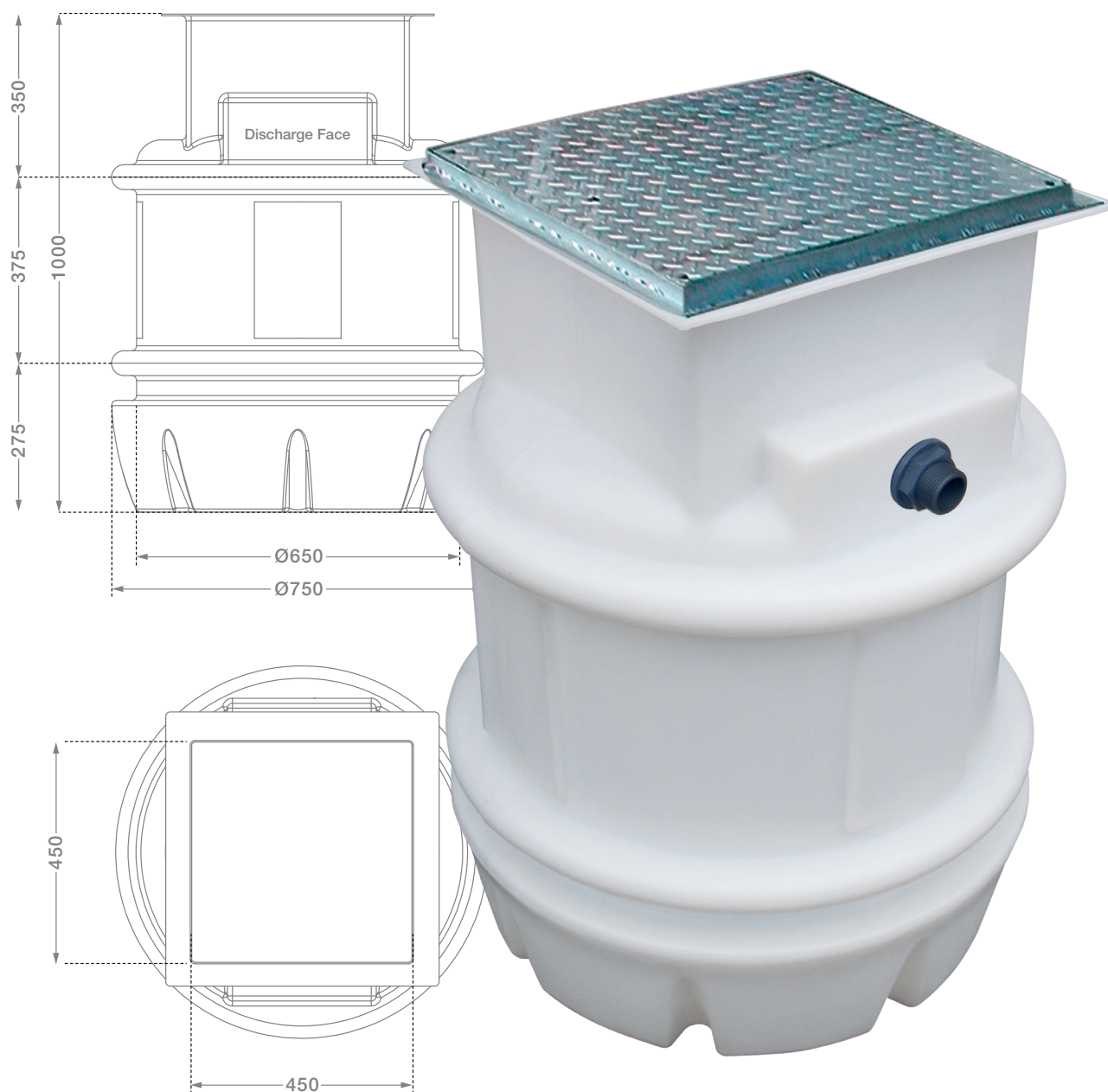
<b>MODEL</b>	<b>BLACK SUMP</b>
Height / Diameter (mm)	450 x 550
Clear opening (mm)	450Ø

KEY FEATURES

- Easy to install
- Variable inlet positions
- Integral non-return valve preventing back flow
- Durable polyethylene tank
- Powerful submersible pump



# SUMPFLO 200



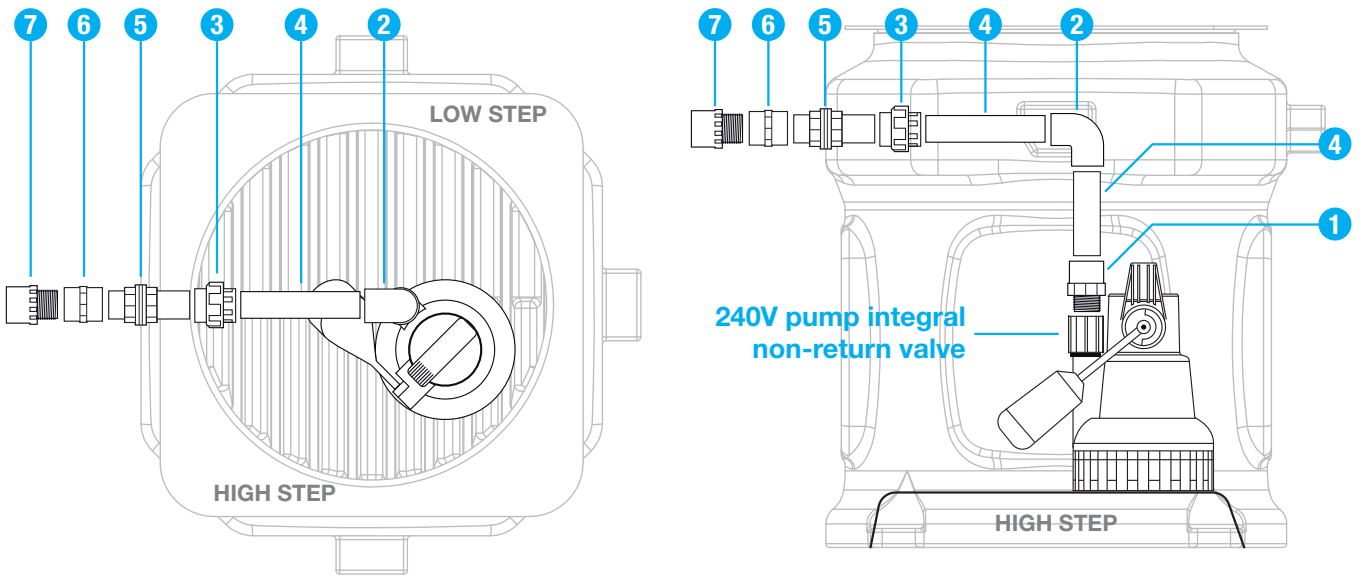
## INFO

The **Sumpflo 200™** is specially designed for the removal of groundwater from basement cavity drainage membrane systems. The system comprises of a (large capacity) 200 litre polyethylene tank, locking access cover (pedestrian duty, not suitable for roadways) and a powerful submersible pump. The system is a very versatile, enabling the installer





PIPE WORK KIT A (SINGLE PUMP CONFIGURATION)

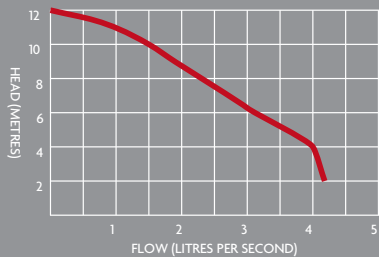


No.	Qty.	Part description	Qty supplied in Kit	Part code
1	1	PVC 1 ¼” Male Threaded Adaptor	1	8023
2	1	PVC 1 ¼” Elbow PL/PL (90degree)	1	8022
3	1	PVC 1 ¼” Socket Union PL/PL	1	8027
4	1	PVC 1 ¼” Class E Pressure Pipe 0.5mtr	1	8024L
5	1	PVC 1 ¼” Tank Connector	1	8028
6	1	PVC 1 ¼” Coupling Female TH/TH	1	8030
7	1	32mm Male Iron	1	9010

TECHNICAL DATA

MODEL	SUMPFLO 200
Power Supply	230V AC
Rated Current	4.9A
Motor Rating	500W
Frequency	50Hz
Revolutions Per Min.	2800rpm
Max Vertical Output	12m
Max Horizontal Output	100m
Max Flow Rate	240l/m
Max Liquid Temp.	<40°C
Discharge Size	1¼”
Cable Length	5m
Weight	25kg
Colour	White

PUMP CURVE



DIMENSIONS

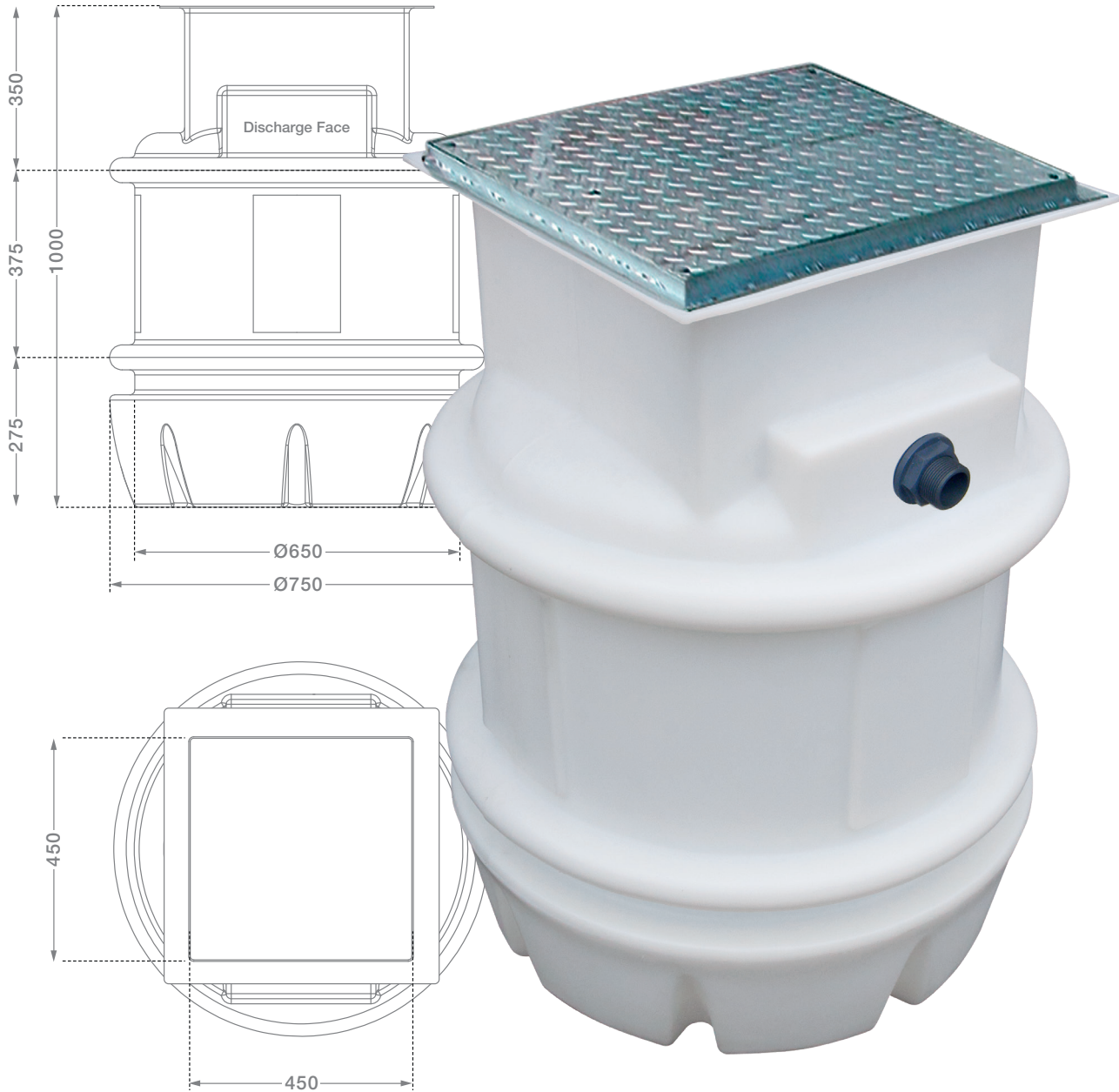
MODEL	SUMPFLO 200
Height / Diameter (mm)	1000 x 750
Clear opening (mm)	450 x 450

KEY FEATURES

- Easy to install
- Odour tight locking access cover
- Variable inlet positions
- Increased storage capacity
- Integral non-return valve preventing back flow
- Durable polyethylene tank
- Pre-moulded flotation points preventing movement below ground
- Integral step for dual pump setup
- Powerful submersible pump



# SUMPFLO 200 TWIN

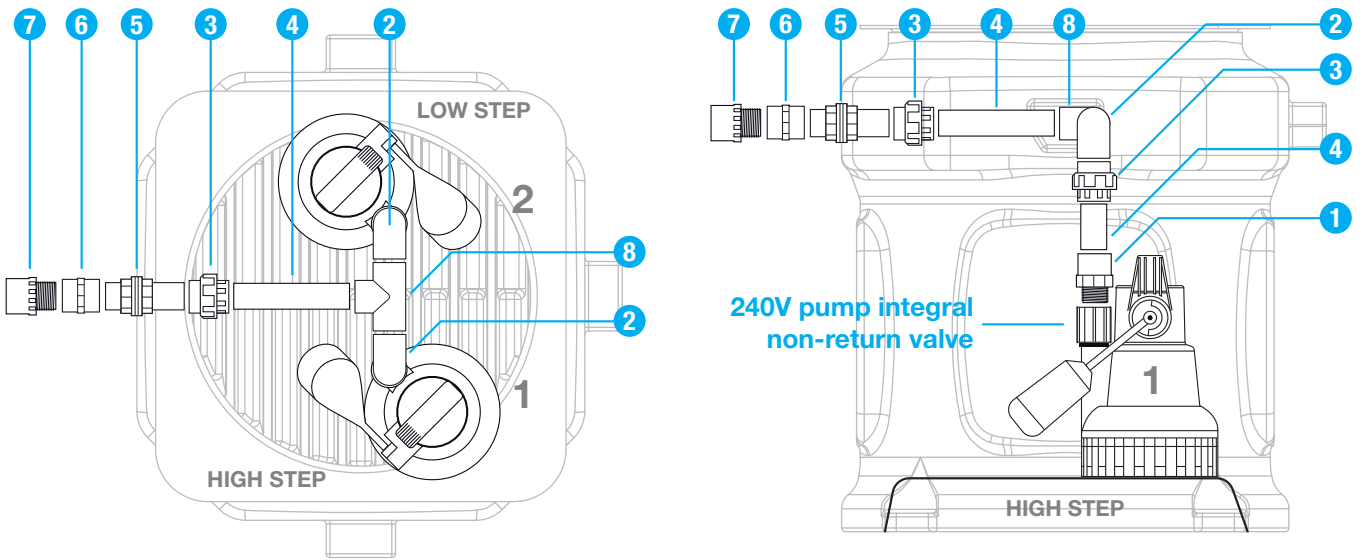


## INFO

The **Sumpflo 200 Twin™** is specially designed for the removal of groundwater from basement cavity drainage membrane systems. The system comprises of a (large capacity) 200 litre polyethylene tank, locking access cover (pedestrian duty, not suitable for roadways) and two powerful submersible pumps. The system is a very versatile, enabling the installer to locate inlets to their specifications.



PIPE WORK KIT A+B (TWIN PUMP CONFIGURATION, SINGLE DISCHARGE)

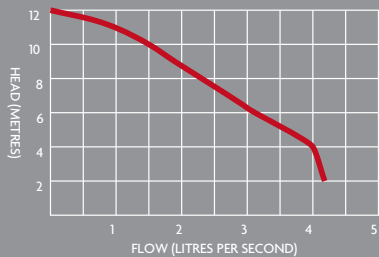


No.	Qty.	Part description	Qty supplied in Kit	Part code
1	2	PVC 1 ¼" Male Threaded Adaptor	1	8023
2	2	PVC 1 ¼" Elbow PL/PL (90degree)	1	8022
3	3	PVC 1 ¼" Socket Union PL/PL	2	8027
4	2	PVC 1 ¼" Class E Pressure Pipe 0.5mtr	1	8024L
5	1	PVC 1 ¼" Tank Connector	0	8028
6	1	PVC 1 ¼" Coupling Female TH/TH	0	8030
7	1	32mm Male Iron	0	9010
8	1	PVC 1 ¼" Tee Piece	1	8032

TECHNICAL DATA

MODEL	SUMPFLO 200 TWIN
Power Supply	230V AC
Rated Current	4.9A
Motor Rating	500W
Frequency	50Hz
Revolutions Per Min.	2800rpm
Max Vertical Output	12m
Max Horizontal Output	100m
Max Flow Rate	240l/m
Max Liquid Temp.	<40°C
Discharge Size	1 ¼"
Cable Length	5m
Weight	31.5kg
Colour	White

PUMP CURVE



DIMENSIONS

MODEL	SUMPFLO 200 TWIN
Height / Diameter (mm)	1000 x 750
Clear opening (mm)	450 x 450

KEY FEATURES

- Easy to install
- Odour tight locking access cover
- Variable inlet positions
- Increased storage capacity
- Integral non-return valve preventing back flow
- Durable polyethylene tank
- Pre-moulded flotation points preventing movement below ground
- Integral step for dual pump setup
- Powerful submersible pump





# FOUL WATER SYSTEMS

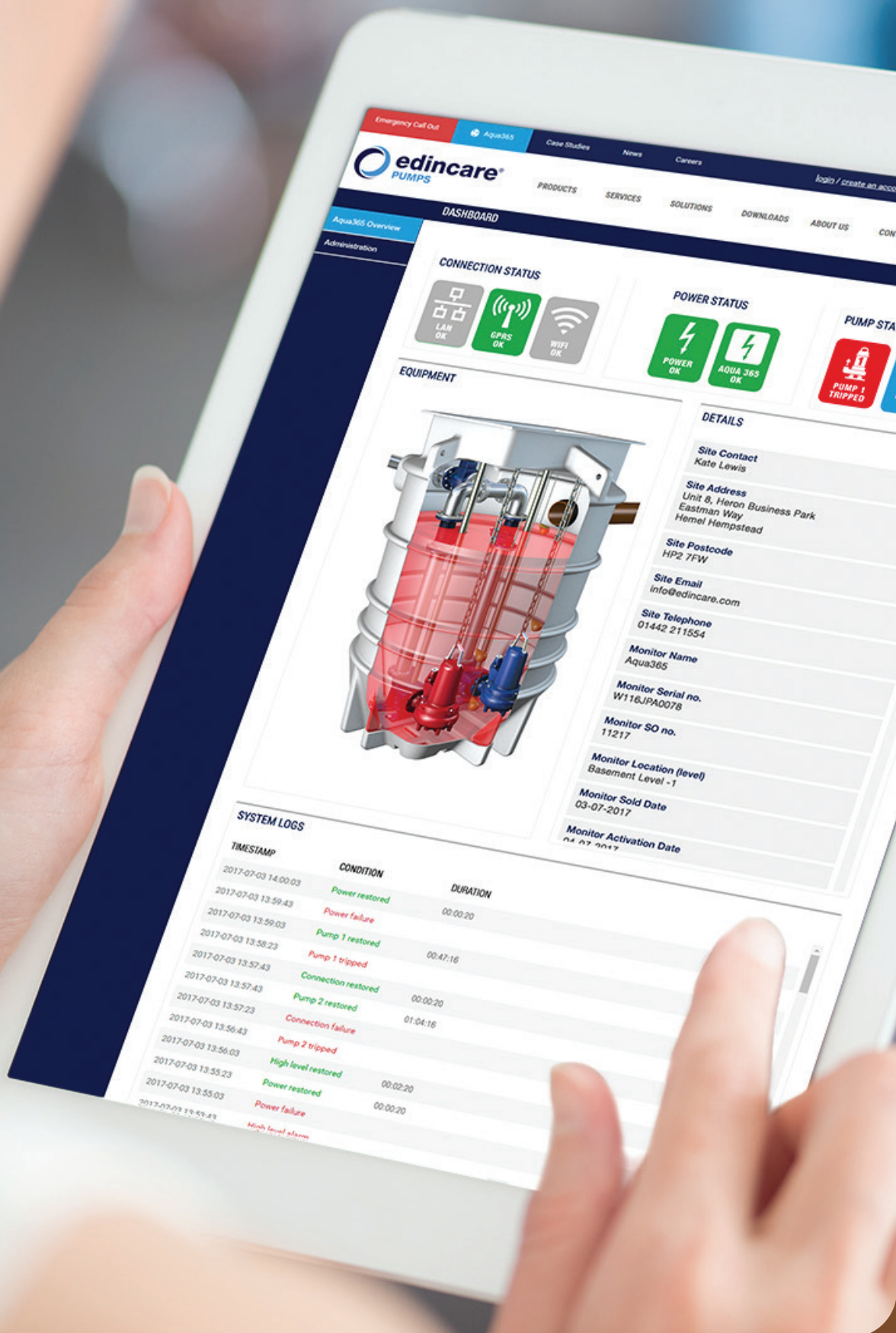
## INTRODUCTION

Our range of foul water systems are specially designed for the collection and removal of foul water where conventional gravity drainage to the main sewer is not possible and/or economical to install.

Our range comes in both single and twin pump configurations and in a variety of tank sizes. There is also a wide range of pumps/control options available to suit your precise requirements.

With the **SumpFlo** and **DrainFlo** ranges, Wykamol can assist you with all your basement pumped drainage requirements.





Aqua365 Overview  
Administration

### DASHBOARD

#### CONNECTION STATUS

LAN OK

GPRS OK

WIFI OK

#### POWER STATUS

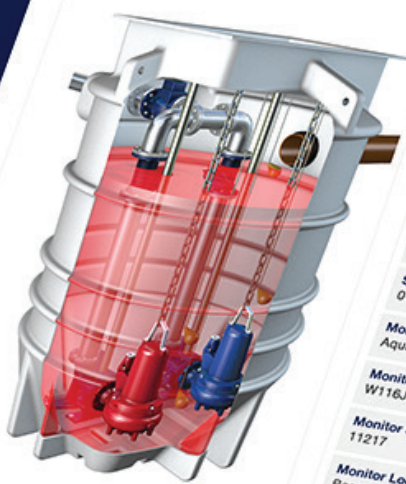
POWER OK

AQUA 365 OK

#### PUMP STATUS

PUMP 1 TRIPPED

#### EQUIPMENT



#### DETAILS

Site Contact  
Kate Lewis

Site Address  
Unit 8, Heron Business Park  
Eastman Way  
Hemel Hempstead

Site Postcode  
HP2 7FW

Site Email  
info@edincare.com

Site Telephone  
01442 211554

Monitor Name  
Aqua365

Monitor Serial no.  
W116JPA0078

Monitor SO no.  
11217

Monitor Location (level)  
Basement Level -1

Monitor Sold Date  
03-07-2017

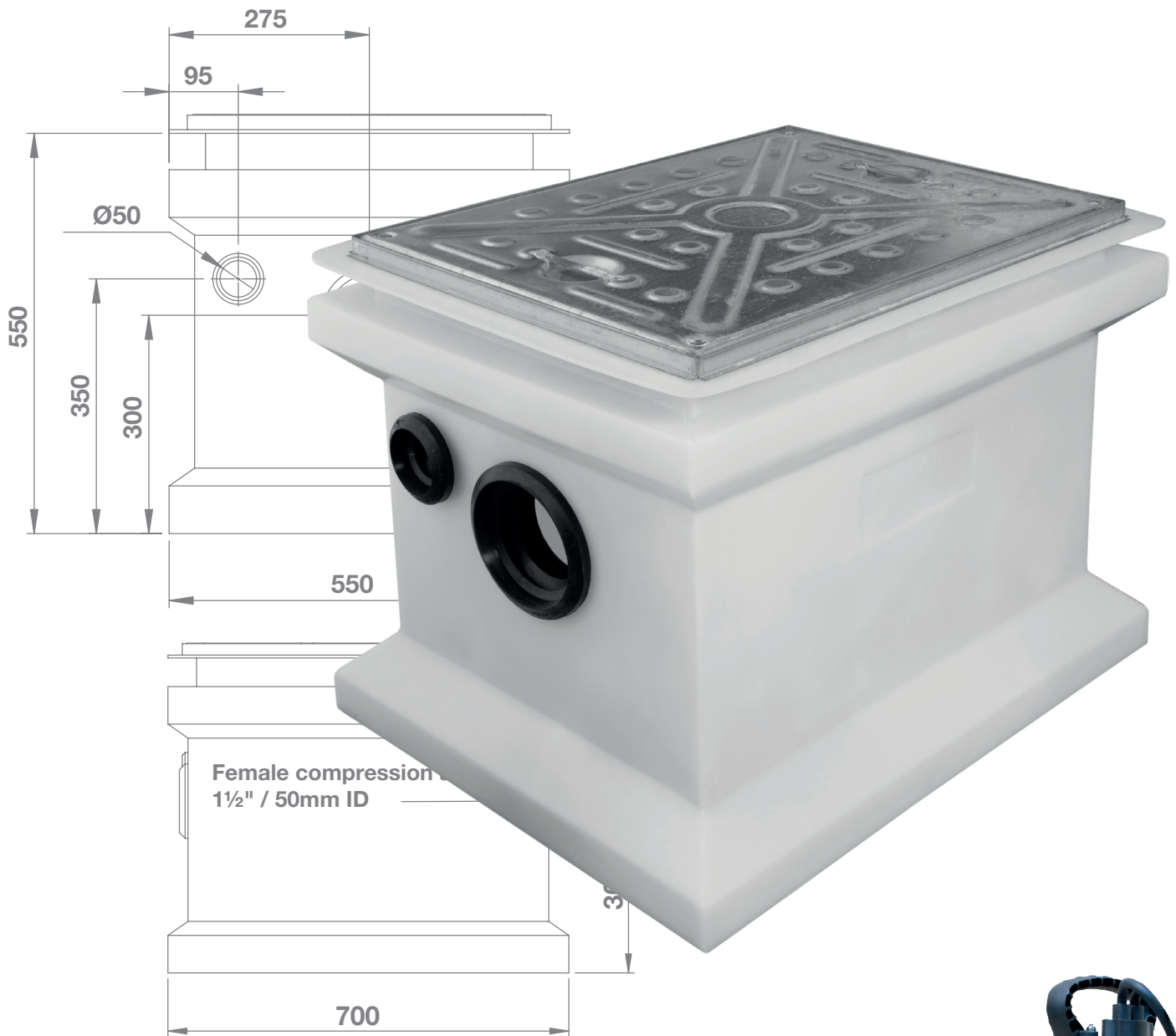
Monitor Activation Date  
04-07-2017

#### SYSTEM LOGS

TIMESTAMP	CONDITION	DURATION
2017-07-03 14:00:03	Power restored	
2017-07-03 13:59:43	Power failure	00:00:20
2017-07-03 13:59:03	Pump 1 restored	
2017-07-03 13:58:23	Pump 1 tripped	00:47:16
2017-07-03 13:57:43	Connection restored	
2017-07-03 13:57:23	Pump 2 restored	00:00:20
2017-07-03 13:56:43	Connection failure	01:04:16
2017-07-03 13:56:03	Pump 2 tripped	
2017-07-03 13:55:23	High level restored	
2017-07-03 13:55:03	Power restored	00:02:20
2017-07-03 13:54:43	Power failure	00:00:20
2017-07-03 13:54:23	High level alarm	



# DRAINFlo 150



## INFO

The **DrainFlo 150** is a fully automatic packaged pumping station specifically designed for pumping foul water to high level when gravity drainage is not possible to install.

The system comprises of a polyethylene tank, locking access cover (pedestrian duty, not suitable for roadways) and a powerful submersible pump.

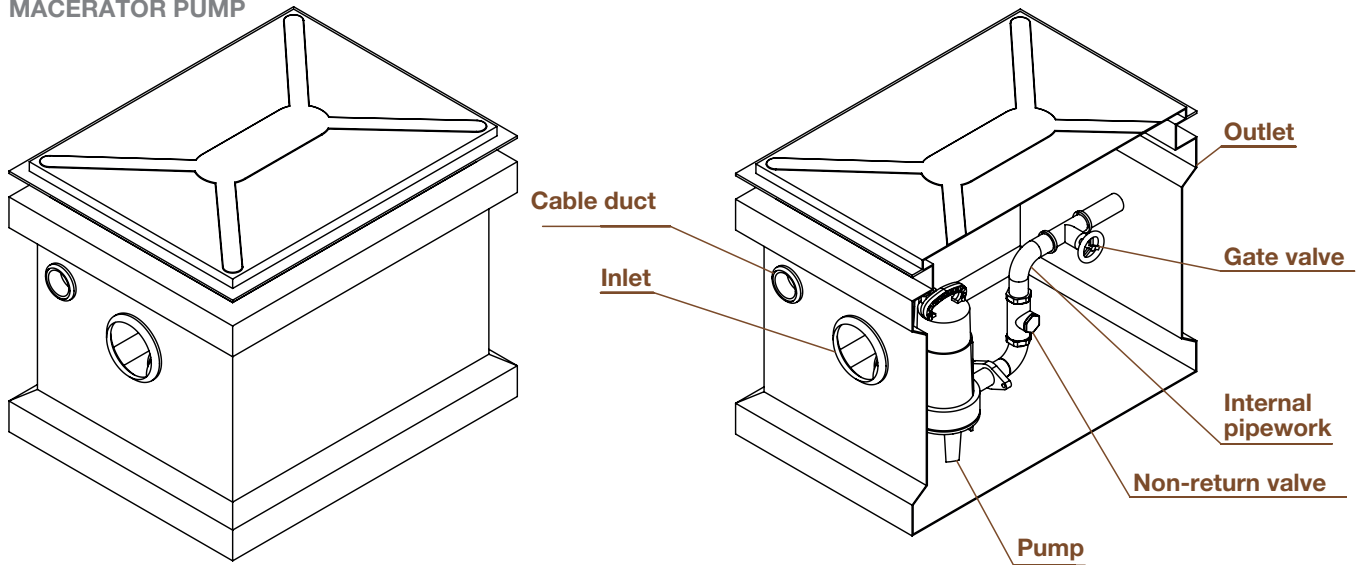
The system is very versatile, enabling the installer to locate inlets to their specifications. The Installer has a choice of pumps available to suit the end application (Macerator and Vortex show opposite)



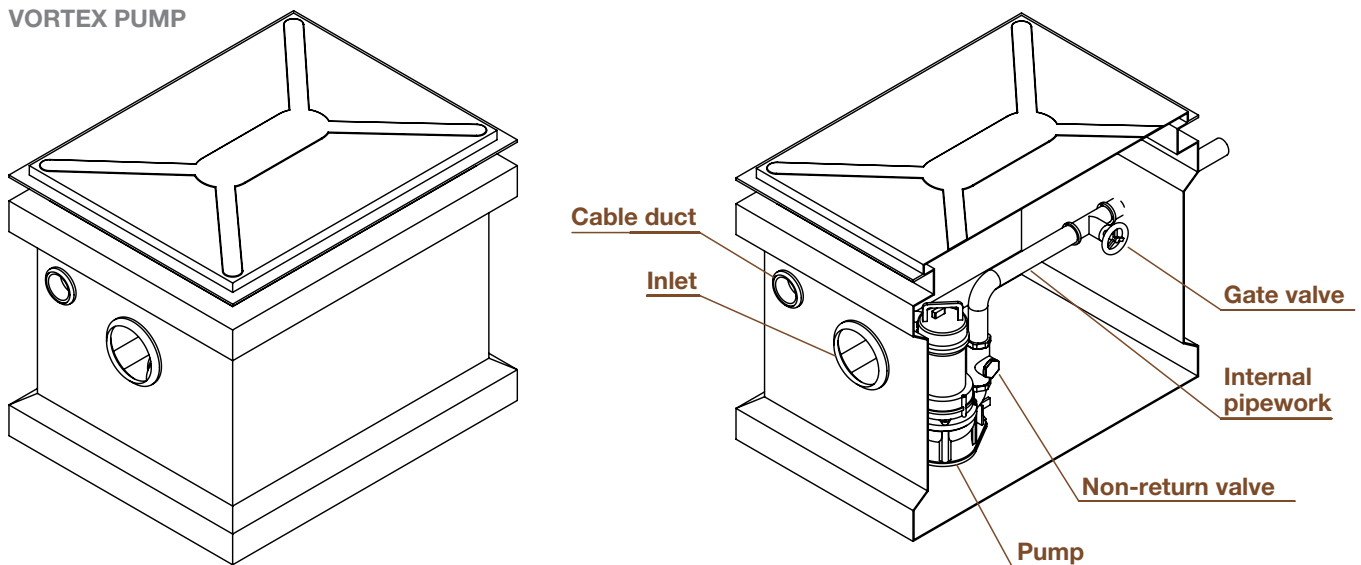


## AVAILABLE PUMPS

## MACERATOR PUMP



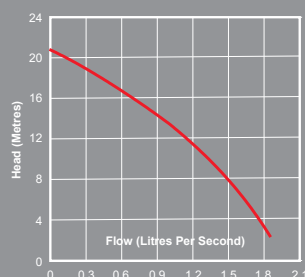
## VORTEX PUMP



## TECHNICAL DATA

MODEL	DRAINFlo 150
No. of pumps	1
Pump type	Macerator
Power supply	1 PHASE
Rated current	6.41A
Motor rating	1000W
Revolutions per min.	2865rpm
Max. vertical	20m
Max. flow rate	1.8 l/sec
Frequency	50 Hz
Max liquid temp.	<40°C
Cable length	10m
Colour	White

## PUMP CURVE



## DIMENSIONS

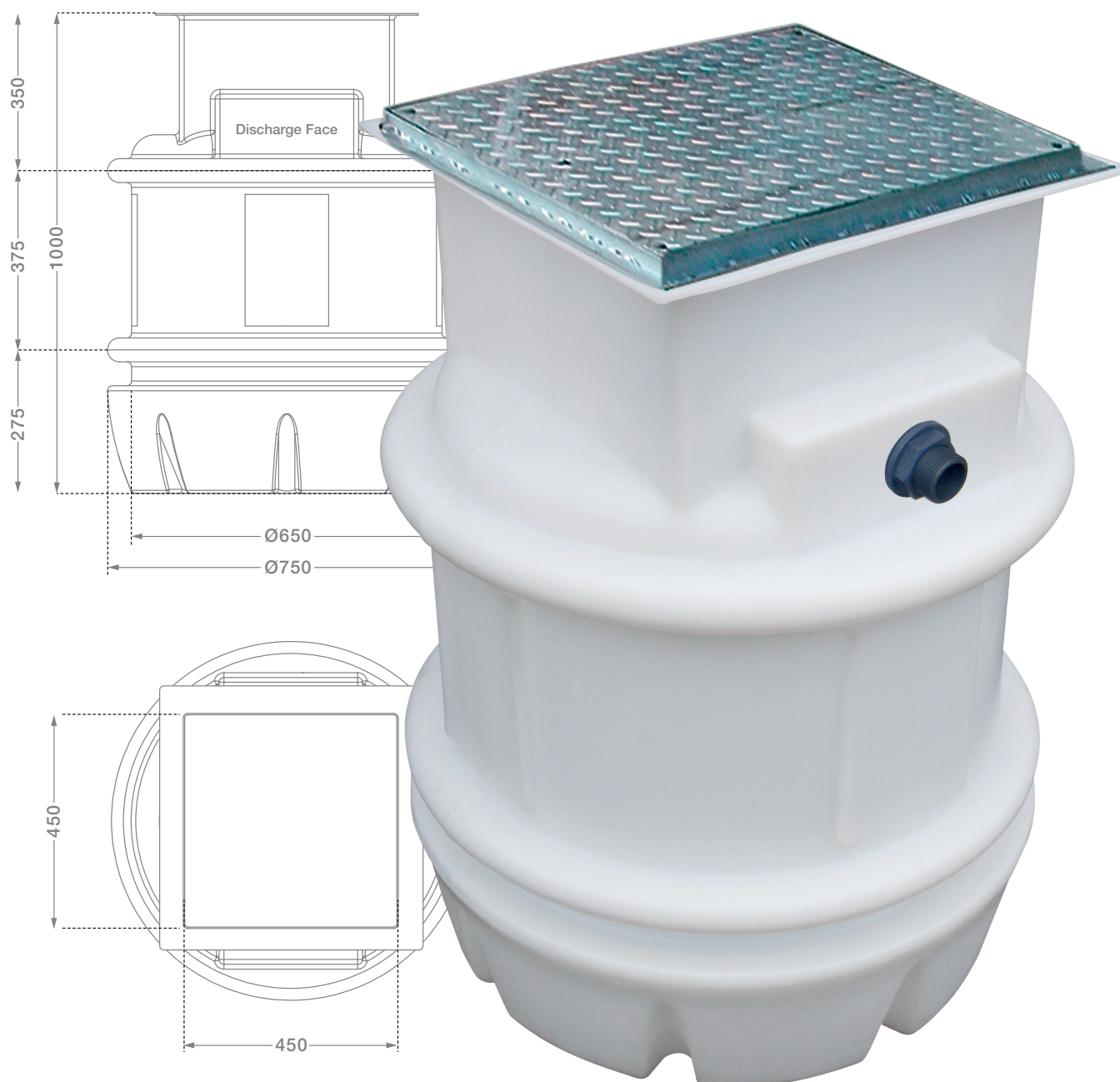
MODEL	DRAINFlo 150
Height / Diameter (mm)	700 x 550 x 550
Clear opening (mm)	600 x 450

## KEY FEATURES

- 'Full Cut' technology offers the maceration and pumping of grey and foul water through small bore pipework.
- Optimised for high head, low flow applications.
- Compact chamber for small space installations.
- Ideal for extensions, outbuilding or basement.
- Variable inlet positions.
- A range of alarms and remote alerts are available offering peace of mind.



# DRAINFLO 200



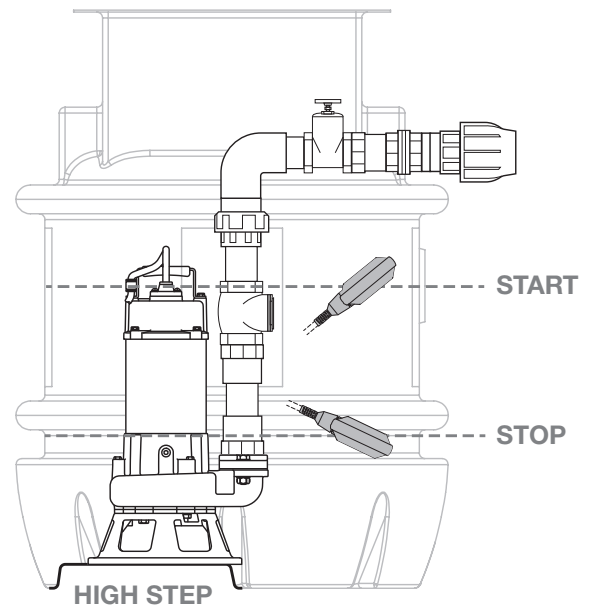
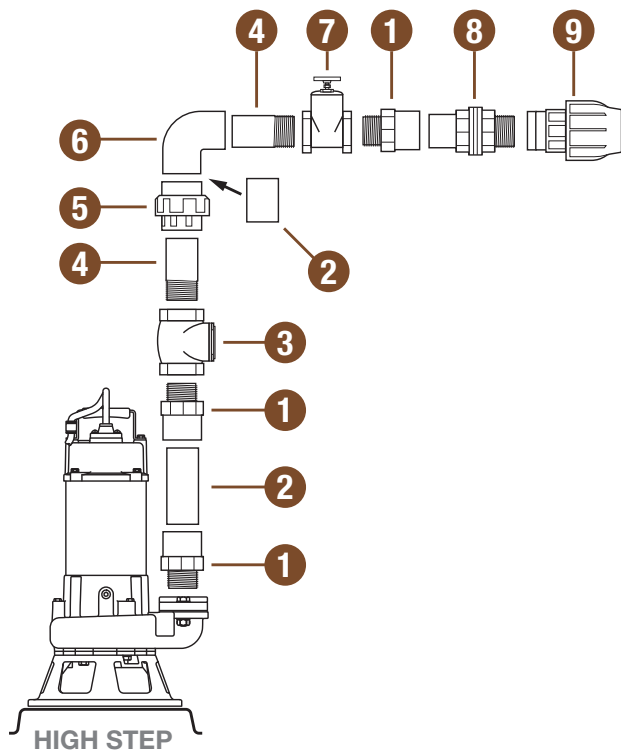
## INFO

The **DrainFlo 200** is a fully automatic packaged pumping station specifically designed for pumping foul water to high level when gravity drainage is not possible to install.

The system comprises of a polyethylene tank, locking access cover (pedestrian duty, not suitable for roadways) and a powerful submersible pump. The system is very versatile, enabling the installer to locate inlets to their specifications.



## PIPE WORK KIT

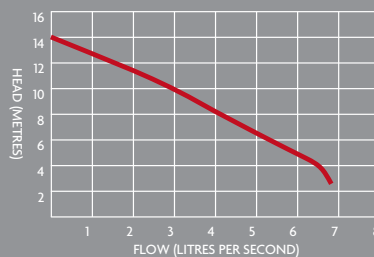


No.	Part description	Qty supplied in Kit
1	2" PVC male threaded adaptor	3
2	2" PVC pipe	2
3	2" Brass NRV	1
4	2" PVC TH/PL Nipple	2
5	2" PVC socket union	1
6	2" PVC 90 deg elbow	1
7	2" brass gate valve	1
8	2" PVC tank connector	1
9	Compression female adaptor 2" to 63mm	1

## TECHNICAL DATA

<b>MODEL</b>	<b>DRAINFlo 200</b>	
No. of pumps	1	
Pump type	Grinder	
Power supply	1 PHASE	3 PHASE
Rated current	5.2A	1.8A
Motor rating	750W	750W
Revolutions per min.	3000rpm	3000rpm
Max. vertical	14m	
Max. flow rate	6.6 l/sec	
Frequency	50 Hz	
Max liquid temp.	<40°C	
Cable length	10m	
Colour	White	

## PUMP CURVE

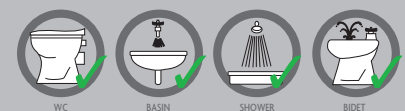


## DIMENSIONS

<b>MODEL</b>	<b>DRAINFlo 200</b>
Height / Diameter (mm)	1000 x 750
Clear opening (mm)	450 x 450

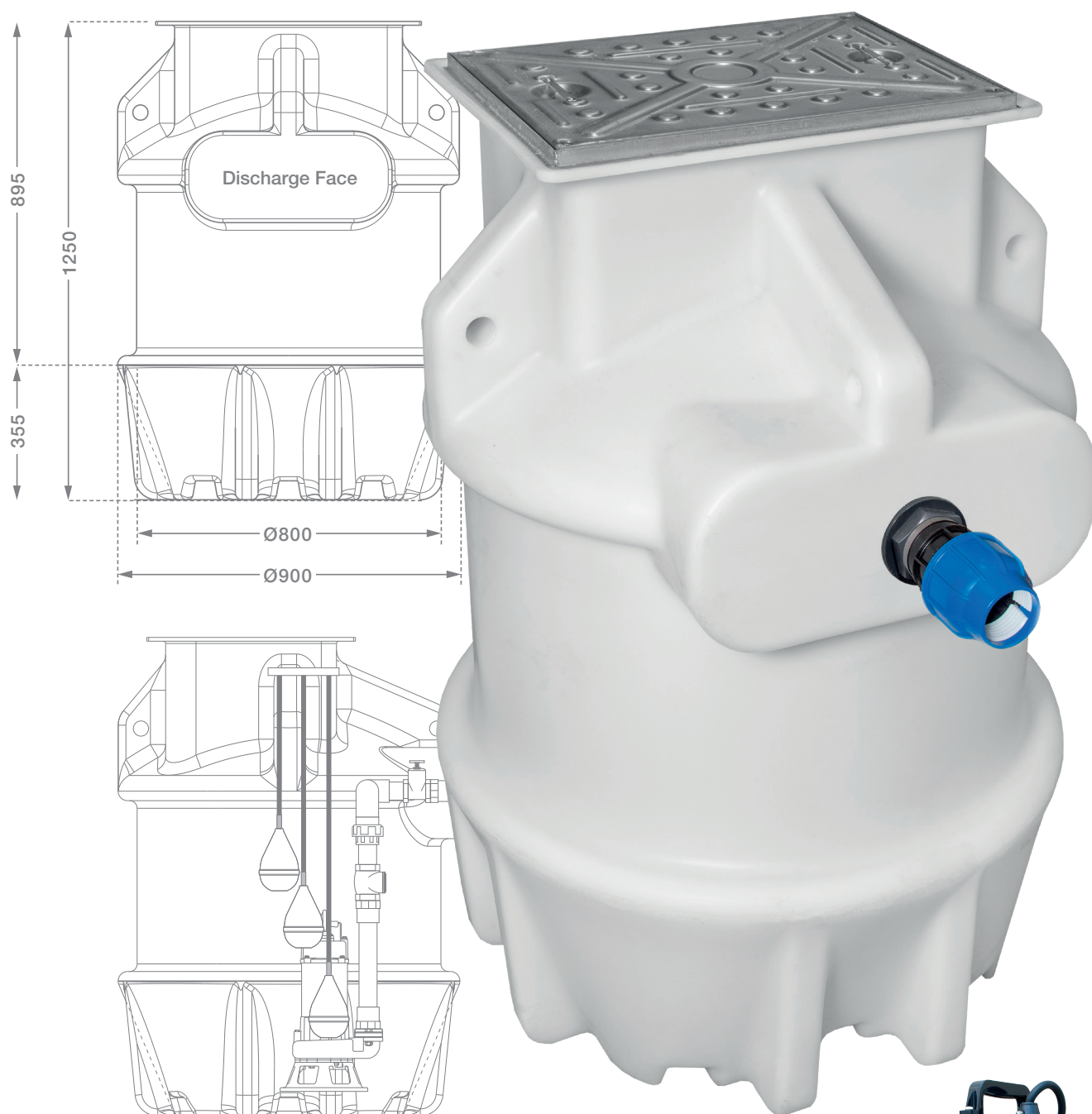
## KEY FEATURES

- 'Full Cut' technology offers the maceration and pumping of grey and foul water through small bore pipework.
- Optimised for high head, low flow applications.
- Compact chamber for small space installations.
- Ideal for extensions, outbuilding or basement.
- Variable inlet positions.
- A range of alarms and remote alerts are available offering peace of mind.





# DRAINFlo 360



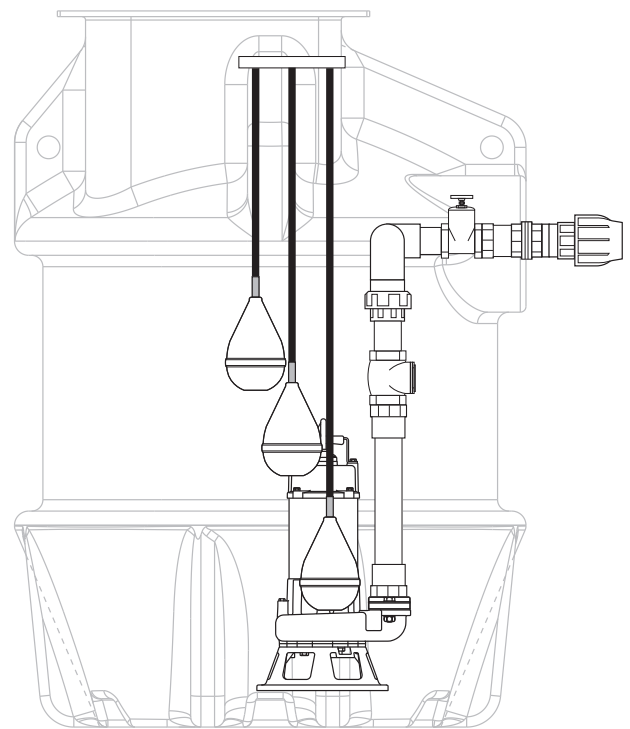
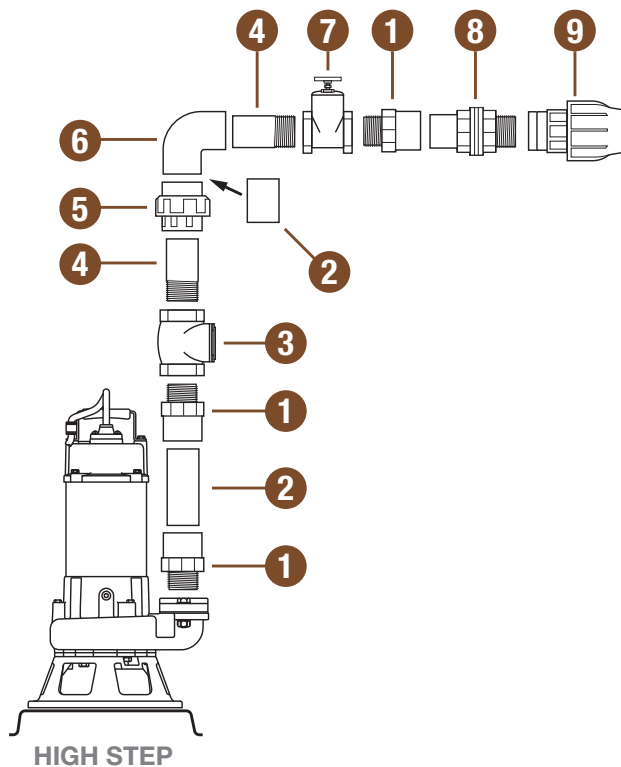
## INFO

The **DrainFlo 360** is a fully automatic packaged pumping station specifically designed for pumping foul water to high level when gravity drainage is not possible to install.

The system comprises of a polyethylene tank, locking access cover (pedestrian duty, not suitable for roadways), powerful submersible pump and control panel. The system is very versatile, enabling the installer to locate inlets to their specifications.



## PIPE WORK KIT

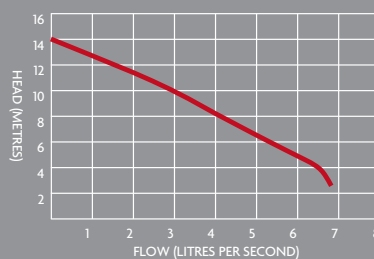


No.	Part description	Qty supplied in Kit
1	2" PVC male threaded adaptor	3
2	2" PVC pipe	2
3	2" Brass NRV	1
4	2" PVC TH/PL Nipple	2
5	2" PVC socket union	1
6	2" PVC 90 deg elbow	1
7	2" brass gate valve	1
8	2" PVC tank connector	1
9	Compression female adaptor 2" to 63mm	1

## TECHNICAL DATA

<b>MODEL</b>	<b>DRAINFlo 360</b>	
No. of pumps	1	
Pump type	Grinder	
Power supply	1 PHASE	3 PHASE
Rated current	5.2A	1.8A
Motor rating	750W	750W
Revolutions per min.	3000rpm	3000rpm
Max. vertical	14m	
Max. flow rate	6.6 l/sec	
Frequency	50 Hz	
Max liquid temp.	<40°C	
Cable length	10m	
Colour	White	

## PUMP CURVE



## DIMENSIONS

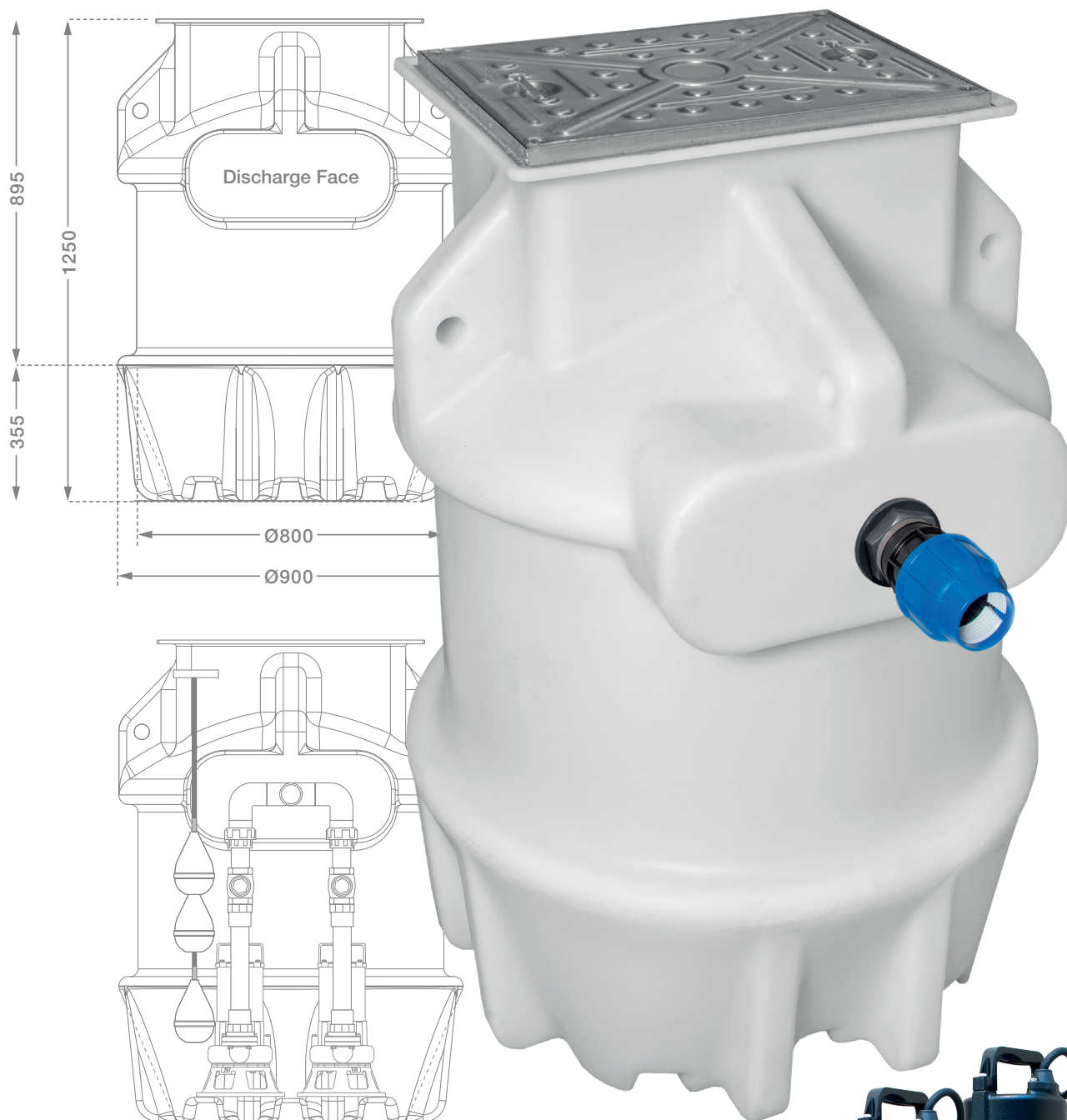
<b>MODEL</b>	<b>DRAINFlo 360</b>
Height / Diameter (mm)	1250 x 900
Clear opening (mm)	600 x 450

## KEY FEATURES

- 'Semi Cut' technology offers a cutting action with small solids clearance to reduce the chance of blockages.
- 360 litres storage capacity.
- 60-degree benching.
- Ideal for extensions, outbuilding or basement.
- Variable inlet positions.
- A range of alarms and remote alerts are available offering peace of mind.



# DRAINFLO 360 TWIN



## INFO

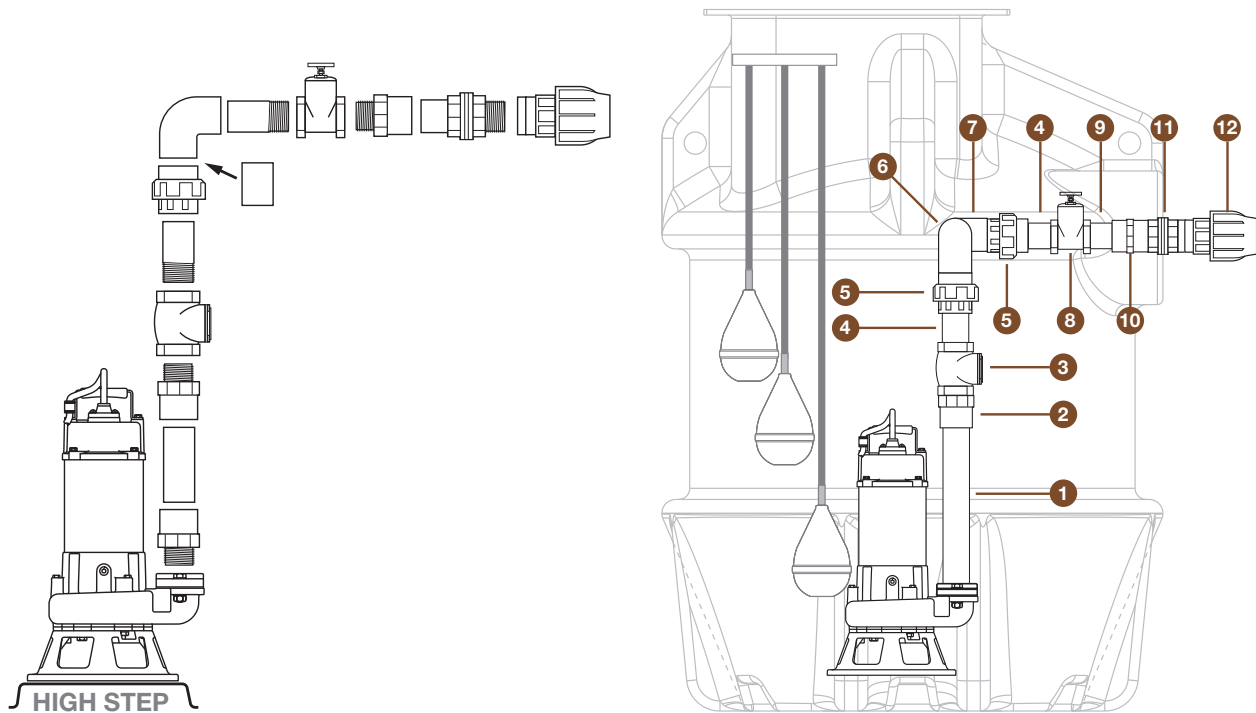
The **DrainFlo 360 Twin** is a fully automatic packaged pumping station specifically designed for pumping foul water to high level when gravity drainage is not possible to install.

The system comprises of a polyethylene tank, locking access cover (pedestrian duty, not suitable for roadways), two powerful submersible pumps and control panel. The system is very versatile, enabling the installer to locate inlets to their specifications.





## PIPE WORK KIT

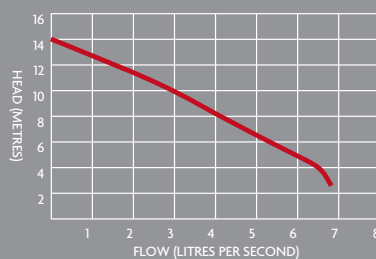


No.	Part description	Qty supplied in Kit
1	2" pressure pipe, PVC Class E (0.5 m)	2
2	PVC male threaded adaptor, 2"	2
3	Brass swing check valve, 2"	2
4	PVC barrel nipple Plain/Threaded, 2"	3
5	PVC socket union Plain/Plain, 2"	3
6	PVC 90 degree elbow Plain/Plain, 2"	2
7	PVC tee-piece Plain/Plain, 2"	1
8	Brass gate valve, 2"	1
9	PVC barrel nipple Threaded/Threaded, 2"	1
10	PVC coupling Plain/Threaded, 2"	1
11	PVC tank connector, 2"	1
12	Compression, female adaptor, 2" to 63 mm ID	1

## TECHNICAL DATA

<b>MODEL</b>	<b>DRAINFLO 360 TWIN</b>	
No. of pumps	1	
Pump type	Grinder	
Power supply	1 PHASE	3 PHASE
Rated current	5.2A	1.8A
Motor rating	750W	750W
Revolutions per min.	3000rpm	3000rpm
Max. vertical	14m	
Max. flow rate	6.6 l/sec	
Frequency	50 Hz	
Max liquid temp.	<40°C	
Cable length	10m	
Colour	White	

## PUMP CURVE



## DIMENSIONS

<b>MODEL</b>	<b>DRAINFLO 360 TWIN</b>
Height / Diameter (mm)	1250 x 900
Clear opening (mm)	600 x 450

## key

## KEY FEATURES

- 'Semi Cut' technology offers a cutting action with small solids clearance to reduce the chance of blockages.
- 360 litres storage capacity.
- 60-degree benching.
- Ideal for extensions, outbuilding or basement.
- Variable inlet positions.
- A range of alarms and remote alerts are available offering peace of mind.



# HIGH LEVEL ALARM 9V



## INFO

A 9V battery powered high level alarm suitable for installation within any of the ground water pump systems.

Audio sounder with mute button.

## KEY FEATURES

- No mains supply required
- Can be retrofitted
- Easy to install

## SUITABLE FOR

- ProSump (as standard)
- ProSump Twin (as standard)
- ProSump BBPS
- ProSump Twin BBPS
- BlackSump (as standard)

## DIMENSIONS

MODEL	HIGH LEVEL ALARM 9V
Height / Width / Length (mm)	90mm / 90mm / 30mm

# AQUASAFE ALARM (MINI & SUMP VARIANTS)



## INFO

Warning system which alerts the end user when there is:

- A power failure to the AquaSafe Alarm
- A high level situation in the chamber/sump
- A high level situation recorded
- A service due

## key

## KEY FEATURES

- Auditory high level alarm with mute
- Service due alert
- Volt-free contact
- Includes float

## SUITABLE FOR

The AquaSafe Alarm 'Mini' includes a micro float switch and is suitable for groundwater applications eg for use with SumpFlo products.

The AquaSafe Alarm 'Sump' includes a sewage float and is suitable for DrainFlo products.

## DIMENSIONS

MODEL	AQUASAFE ALARM
Height / Width / Length (mm)	122mm / 124mm / 85mm

There is a battery incorporated within the panel to power itself in case of mains power failure. The system is designed to activate via a mini or sump float switch, which is located inside the chamber/sump, it is set to activate higher than the activation point of the primary pump.

# UPS 2000 & UPS 3000

UPS2000



UPS3000



## INFO

The **Wykamol UPS 2000** and **UPS 3000** are floor mounted on-line double conversion Uninterruptible Power Supplies (UPS) offering the highest levels of resilience and protection for your property.

The units will provide power to one submersible pump in the event of mains power failure, allowing for continued pump operation. Both systems are quick and simple to install.

**UPS 2000** system can last continuously for 30mins (301 pump only) and the **UPS 3000** system can last continuously for 30mins (303 pump) or 60mins (301 pump), both are based on a 3.5m head.

## key

### KEY FEATURES

- Alerts the end user if there is a mains power failure.
- Keeps the pump system powered in the event of mains power failure.
- Can be added to new or retrofitted to existing installations.

### TECHNICAL DATA

PRODUCT	WYKAMOL UPS 2000	WYKAMOL UPS 3000
Power supply to UPS	220–240VAC	220–240VAC
Input current	9.7A	14A
Output voltage	220/230/240V	220/230/240V
Output power capacity	1600W	2700W
Output frequency	50–60Hz	50–60Hz
Battery type	Maintenance-free lead based	Maintenance-free lead based
Recharge time	<4hrs for 80% of the load	<4hrs for 80% of the load
Backup time on 3.5m head	301-30 mins continuous	301-60 mins continuous 330-30 mins continuous
Weight	19kg	28kg
Dimensions mm H/W/D	250/160/450	335/190/450

### SUITABLE FOR

- Prosump
- SumpFlo 200 System

### DIMENSIONS

MODEL	UPS2000
Height / Width / Length (mm)	250mm / 160mm / 450mm
MODEL	UPS3000
Height / Width / Length (mm)	335mm / 190mm / 450mm



# POWERFLO



## INFO

The **Wykamol Powerflo** is a battery back-up for circumstances when the primary pump fails or there is a loss of mains power, causing the primary pump to become redundant.

The **Wykamol Powerflo** Battery Back-up comprises of a control panel, 24V back-up pump, 3 no. float switches and a non-return valve. The control panel monitors the status of the complete system, including the primary pump, using visual and audio indicators to alert the homeowner and installer.

It is advised that the operation of the battery back-up is checked every 6 months (see technical data-sheet) to ensure your basement is always protected from water ingress in any eventuality.

## TECHNICAL DATA

### MODEL

Power Supply to Panel  
Power Supply to Pump  
Frequency 5  
Motor Rating  
Max. Flow Rate  
Max. Vertical Output  
Max. Horizontal Output  
Max. Liquid Temp.  
Rated Current  
Discharge Size  
Cable Length  
Battery Life  
Colour

### POWERFLO

230V AC  
24V  
0Hz  
Intermittent  
180l/min  
6.5m  
45m  
<40°C  
13amps  
1¼"  
4m  
45min  
Grey

## key

### KEY FEATURES

- Visual indicators to show whether there is a mains supply available (white), if there is a fault (red) and if the secondary back-up pump is running (green).
- Audio indicators to alert the homeowner of a high water level situation
- Monitors the entire system, not just the back-up pump
- Battery life of 90 minutes

### SUITABLE FOR

- ProSump
- ProSump Twin

### DIMENSIONS

#### MODEL

Height / Width / Length (mm)

#### POWERFLO

380mm / 300mm / 180mm

# POWERSHIELD



## INFO

Mains power failure commonly coincides with flooding. The **PowerShield** ensures that your pumping equipment continues to operate during a cut in mains power, protecting your property from catastrophic flooding damage.

Battery backup systems are especially important for groundwater and surface water applications where inflow to the system cannot be controlled.

The **PowerShield** offers the highest levels of resilience and protection for your property. The unit will provide power to one submersible pump in the event of mains power failure, allowing for continued pump operation. The capacity and duration of the intervention are proportional to the size of the inverter and to the capacity of the connected batteries.

## key

### KEY FEATURES

- Alerts the end user if there is a mains power failure.
- Keeps the pump system powered in the event of mains power failure.
- Can be retro-fitted to existing pump systems
- A wide range of battery capacities available to support all systems.
- High level alarm float switch input
- Integral audio and visual alarm
- 3, 6, or 12 monthly maintenance schedule

### TECHNICAL DATA

MODEL	POWERSHIELD
Mains supply	230VAC
Output voltage	12VAC
Output frequency	50–60Hz
Battery type	Maintenance-free lead based
Operating temperature	-5°C to +40°C
Relative humidity	<50%
Inverter protection fuse	Yes
Fuse charge protection	Yes
Case construction	Metal, rated IP55
Security	Locking with coded key
Weight	9kg not including battery
Colour	Grey (RAL 7032)

### SUITABLE FOR

- All pumping stations (below and above ground)

### DIMENSIONS

MODEL	POWERSHIELD
Control Panel	W495mm / H370mm / D200mm
Battery Compartment	W280mm / H370mm / D200mm

### RUNTIME BY POWER REQUIREMENT\*

MODEL	CURRENT	NO. OF BATTERIES	RUNTIME
500W	Nominal: 2A	1 battery 60Ah	60 mins
		2 batteries 100Ah	120 mins
		3 batteries 100Ah	240 mins
750W	Nominal: 3A	1 battery 80Ah	60 mins
		2 batteries 100Ah	90 mins
		3 batteries 100Ah	180 mins
1500W	Nominal: 6A	1 battery 100Ah	45 mins
		2 batteries 100Ah	90 mins
		3 batteries 100Ah	140 mins
2300W	Nominal: 10A	1 battery 100Ah	30 mins
		2 batteries 100Ah	60 mins
		3 batteries 100Ah	90 mins

\* The runtime under battery power has been calculated running the pumps in standard applications

# AFTERSALES

## PLANNED SERVICING

Our ISO9001 planned servicing:

- Increases the life expectancy of your equipment
- Reduces running costs including energy and maintenance
- Reduces the risk of breakdowns with their resultant problems this causes

Planned servicing is available for all our customers' pumps and Pump Packages.

We will:

- Service your equipment on a regular basis
- Provide full reporting on the works carried out, the condition of the equipment
- Make recommendations to replace spares or parts that may be required
- Arrange service visits to suit you
- Reduce our hourly charges for unscheduled call outs
- Use fully trained service engineers
- Provide high-priority scheduling for emergency call outs

## EMERGENCY CALL-OUTS

In the event of a system failure we understand the need for urgency. All emergency call-outs are treated as a priority and we aim to provide a rapid response. With nationwide coverage and service vehicles located throughout the United Kingdom we aim to attend site within 24 hours from initial receipt of your call.

Our service coordinators will identify, where possible, your specific equipment and our engineers will aim to attend site with any spare parts that may be required. In the unlikely event that the repairs

cannot be made on the initial visit, we are able to provide temporary replacements while the relevant parts are ordered / repaired from our service centre.

Should more complex repairs be required these are undertaken at our service centre by our fully trained service engineers using only genuine manufacturer's parts.

Throughout all repairs your service coordinator will keep you informed of the ongoing progress with regular updates.

## COMMISSIONING

Once the civil works have been completed our service department can arrange for your system to be commissioned. Our commissioning service comprises of our engineers attending site and installing the pumps with all associated equipment.

Our engineers will ensure that the system is operating in accordance with our installation & operating guidelines and you will be provided with a signed commissioning certificate along with the O&M manual upon completion.

Our commissioning service provides you with peace of mind knowing that the system is installed correctly in turn ensuring that you comply with our warranty conditions.

Supplied in conjunction with Edincare Pumps









# The Complete Guide to Pumped Drainage Systems

## Wykamol Group

Boran Court, Network 65 Business Park, Hapton,  
Burnley, Lancashire BB11 5TH  
t: +44 (0)1282 473100 • [www.wykamol.com](http://www.wykamol.com)  
e: [info@wykamol.com](mailto:info@wykamol.com)

## Triton Systems

Unit 3-5 Crayford Commercial Centre,  
Greyhound Way, Kent, DA1 4HF  
t: +44 (0)1322 318 830 • [www.tritonsystems.co.uk](http://www.tritonsystems.co.uk)  
e: [info@tritonsystems.co.uk](mailto:info@tritonsystems.co.uk)



**Basement  
Waterproofing**  
ASSOCIATION



**NBS Source**  
PARTNER