

# MOULD CONTROL

REMOVE, PREVENT, RESTORE AND PROTECT



**PROMOTING HOMES FIT FOR HUMAN HABITATION**







## Black mould roots grow deep into your plaster finish...

**Black mould is a type of fungus** that commonly grows in residential dwellings with low u-values and dew points; mould spores love cold, damp walls. Typical strains of mould found in residential properties include *Aspergillus Niger*, *Stachybotrys*, *Cladosporium* and *Alternaria* fungi.

Damp walls can be caused by condensation, and penetrating or rising damp, so it is essential to repair any external cracks and install a damp-proof system before restoring the internal environment.

Using a bleach-based product is usually the go-to for homeowners and landlords when dealing with visible signs of mould. Bleach clears mould from the surface of a substrate, but due to its chemical composition, it cannot penetrate beyond the surface and get to the root of the mould. Without using a biocidal cleaning system, such as **MCSI**, the mould will quickly return.

As a caustic product, if bleach comes into contact with the skin it can cause severe burns. It is also essential not to inhale bleach-based products as this can cause breathing problems - making internal environments potentially less fit for human habitation while the cleaning takes place.

That is not to say that there are no minor risks involved with using a biocide cleaning spray such as **MCSI**. That is why we supply all the PPE required by HSE when using the products included in the **Mould Eradication Kit**.



# THE COMPLETE SYSTEM

## REMOVE, PREVENT, RESTORE AND PROTECT



**After all remedial works have been completed, take the following steps to ensure your dwelling is in line with the Homes (Fitness for Human Habitation) Act 2018**

### REMOVE

Black mould has wide and deep-ranging roots. To properly remove mould spores a deeply penetrating product is required such as **MCS1 Mould Clear Solution**. Biocidal treatments kill mould at its roots, just like a weed, whereas typical bleach-based products often only take care of the superficial aesthetic problems and the mould will return.

### PREVENT

You've solved the source of your condensation, penetrating or rising damp, and sterilised the contaminated surfaces, but the internal conditions of your home will not improve on their own. The occupant of the dwelling must take responsibility for maintaining the internal environment to prevent further condensation that will feed mould growth. As part of the redecorating process, include **MCS3 Fungicidal Additive** in your paints, gloss and wallpaper paste, to prevent future attacks.

### RESTORE

Cold walls combined with high levels of humidity will eventually suffer from condensation, therefore to restore the internal environment to a habitable one, **ISO-THERM** thin internal wall insulation (TIWI) should be applied to uninsulated, solid wall homes. It is a much faster, less disruptive form of insulation and is not as prone to the failures that cavity wall insulation, when installed incorrectly, can exacerbate, such as penetrating damp and interstitial condensation problems from a saturated cavity.

### PROTECT

Your walls need protection from all sorts of things; damp, bacteria and glancing impact. **ThermalDry** covers all three! The incorporation of hollow glass beads into the product act like a miniature 'thermos flask', reflecting the thermal energy away from the walls, preventing the condensation of water and protecting your decorative finishes from impact too.

#### Mould Eradication Kit

This product contains everything you need to **remove** and kill mould growth in your home and help **prevent** it from returning. Containing MCS1 Mould Clear Solution in a handy spray bottle and 2 bottles of MCS3 Fungicidal Additive to be added to your decorative finishes, an inhospitable environment for the growth of mould spores is created.



#### ISO-THERM

This product is vapour permeable, yet waterproof, thereby resisting any lateral damp transference in your walls. Due to this and its high thermal benefits, it is highly resistant to any formation of surface mould. Residential properties with cold, damp and mouldy walls can **restore** their residence with improved U-values and a fast application of ISO-Therm.



#### ThermalDry

This unique anti-condensation coating is the final part of the system and will effectively **protect** your walls from condensation forming on cold spots: the main cause of mould growth in dwellings. ThermalDry is also eco-friendly and anti-bacterial, creating a healthier internal environment. Its water-repelling properties make it ideal for damp areas such as kitchens and bathrooms.







# NOT ALL MOULD CONTROL SYSTEMS ARE CREATED EQUAL...

Scan for videos  
and more

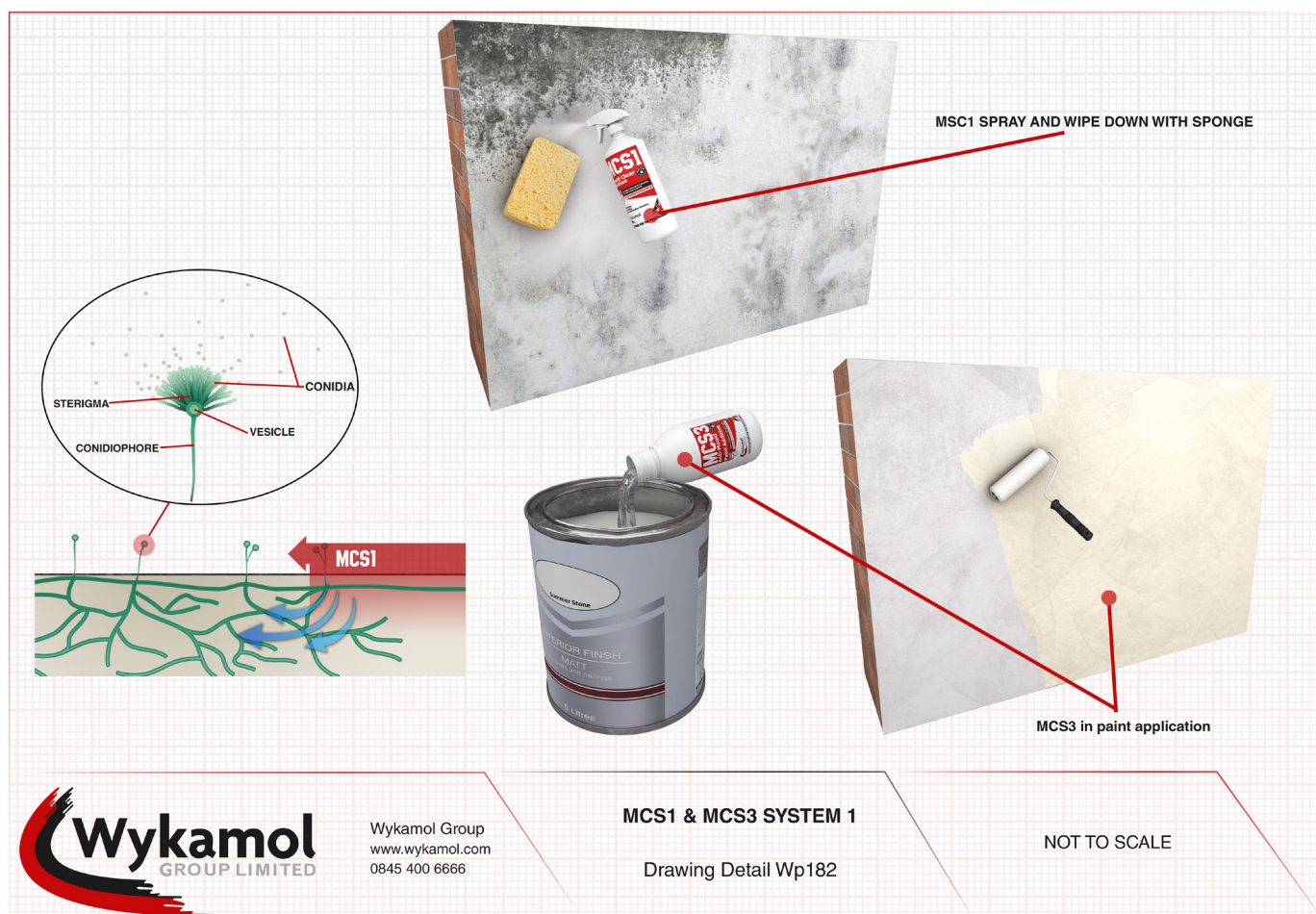


## SYSTEM 1

MCS1 - Remove mould spores from deep within the plaster or substrate.

MCS3 - Prevent future attacks by including a biocidal additive in the chosen decorative finish.

**Ideal treatment for the initial outbreak of black mould and for smaller areas of mould on walls, ceilings, window reveals, frames, doors and skirting boards. This system will eradicate mould and inhibit any regrowth.**



# REMOVE, PREVENT, RESTORE AND PROTECT

CALL OUR TECHNICAL SUPPORT TEAM ON **01282 473 100**

## SYSTEM 2

MCS1 - Remove mould spores from deep within the plaster or substrate.

THERMALDRY - Protect your walls and finishes from moisture, bacteria and glancing impact.

MCS3 - Prevent future attack by including a biocidal additive in the chosen decorative finish.

**With the addition of Thermaldry Anti-Condensation Coating, this system provides a thermal barrier, helping with issues of condensation on walls and ceilings in kitchens, bathrooms and bedrooms.**



# REMOVE, PREVENT, RESTORE AND PROTECT

FOR MORE INFORMATION VISIT [www.wykamol.com](http://www.wykamol.com)





## AT WYKAMOL, WE WANT GREEN PRODUCTS... NOT WALLS!

### SYSTEM 3

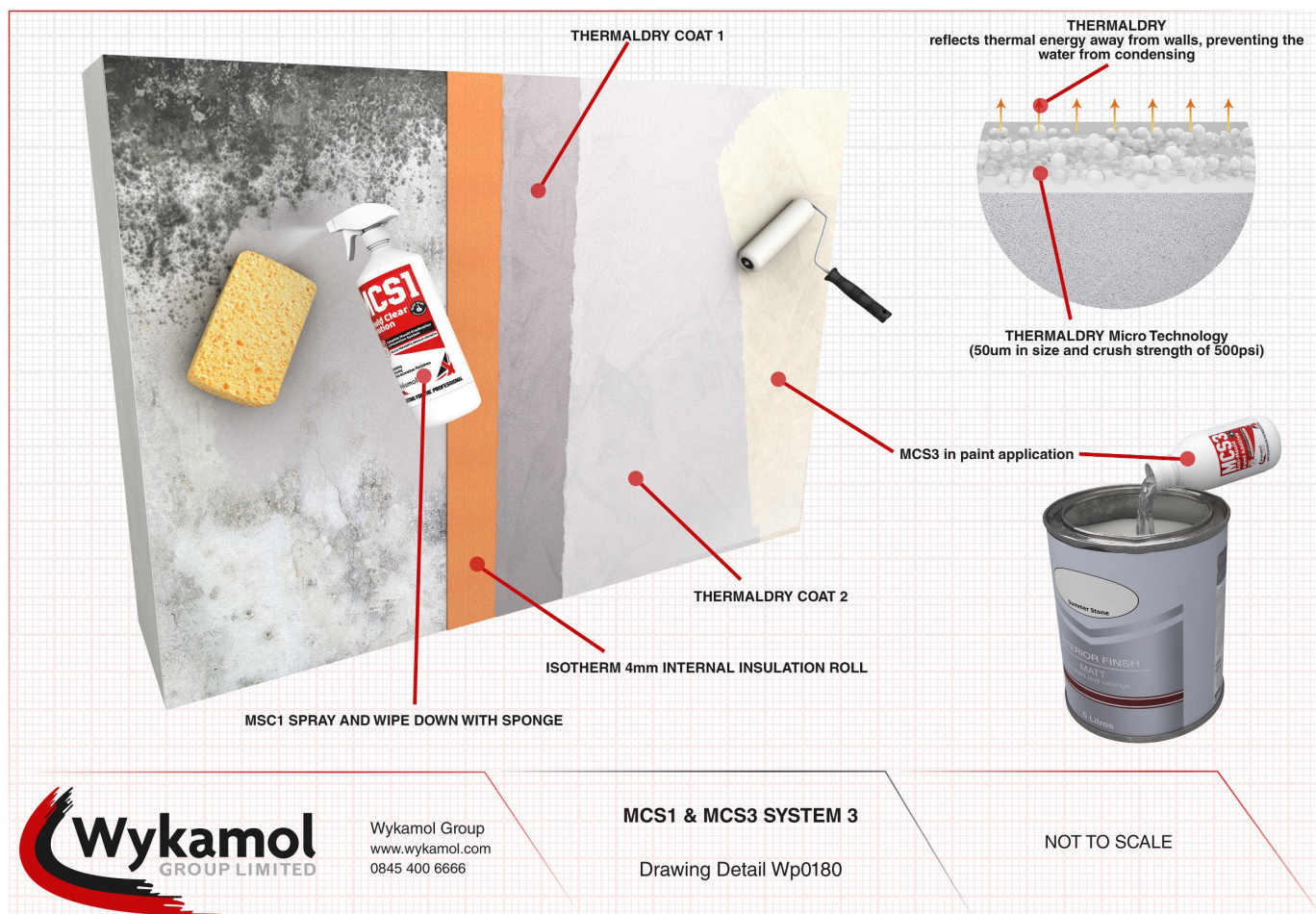
MCS1 - Remove mould spores from deep within the plaster or substrate.

ISO-THERM - Restore your home with warm internal walls no longer prone to cold spots or condensation.

THERMALDRY - Protect your walls and finishes from moisture, bacteria and glancing impact.

MCS3 - Prevent future attacks by including a biocidal additive in the chosen decorative finish.

**The ideal system to treat cold, damp walls! Incorporating Isotherm provides walls and ceilings with a waterproof, thermal barrier, vastly increasing the surface temperature, while also preventing water and moisture ingress – all from a membrane that is 4mm thick! This is the ultimate solution for internal use on any walls or ceilings, especially bay windows and walls that are exposed to external weather conditions and temperatures.**



CALL OUR TECHNICAL SUPPORT TEAM ON **01282 473 100**





### Wykamol has been an early adopter of recycled plastics

and has moved away from using virgin materials. All plastic containers are now made from AT LEAST 30% PCR (post consumer recycled) content including all packaging in the new Mould Eradication Kit. Plastic packaging in the kit can be refilled repeatedly rather than creating even more single use plastics that go straight to landfill.

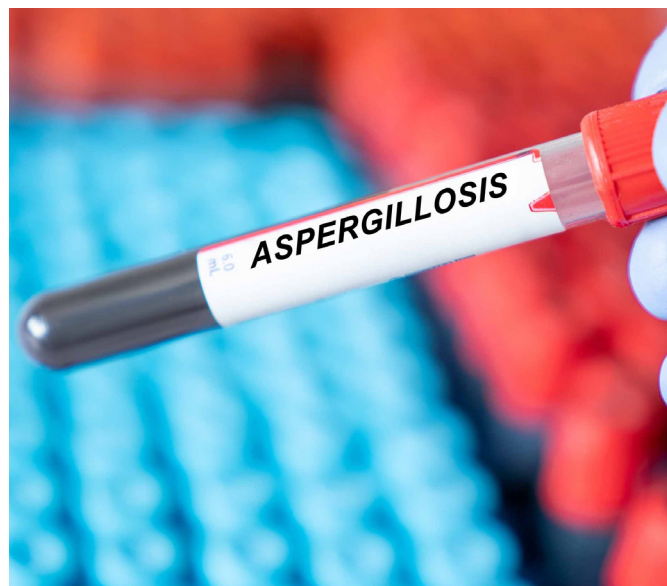


To further reduce the use of fossil fuels Wykamol has installed almost 400 solar PV panels across their two production sites, saving over 62 tonnes of CO<sub>2</sub> emissions per annum; that's enough energy to make 22,500 cups of tea per week!



### Homes fit for human habitation

Blasting the heating instead of dealing with the remedial issues that lead to a cold home is not only bad for the environment, but also bad for your health.



Aspergillosis, a condition caused specifically by the black mould *Aspergillus Niger*, affects the lungs and can cause breathing difficulties. However, it is very rare in healthy people and although the growth of black mould in a dwelling is unsightly, it is merely a symptom of an unhealthy internal environment, and likely not the cause of illness. The environment required for black mould to grow will certainly be detrimental to your health, as breathing in cold, moisture-laden air increases the risk of respiratory infections, according to Asthma + Lung UK\*



\* [www.asthmaandlung.org.uk/conditions/asthma/asthma-triggers/weather](http://www.asthmaandlung.org.uk/conditions/asthma/asthma-triggers/weather) (DEC 2020)



# MOULD CONTROL

**REMOVE, PREVENT, RESTORE AND PROTECT**



## Wykamol Group

Boran Court, Network 65 Business Park, Hapton,  
Burnley, Lancashire, BB11 5TH

t: +44 (0)1282 473100 w: [www.wykamol.com](http://www.wykamol.com)

e: [info@wykamol.com](mailto:info@wykamol.com)

## Triton Systems

Unit 3-5 Crayford Commercial Centre,  
Greyhound Way, Kent, DA1 4HF

t: +44 (0)1322 318 830 w: [www.tritonsystems.co.uk](http://www.tritonsystems.co.uk)

e: [info@tritonsystems.co.uk](mailto:info@tritonsystems.co.uk)



**Basement  
Waterproofing**  
ASSOCIATION



**PCA**  
Property Care  
ASSOCIATION



**NBS Source**  
PARTNER