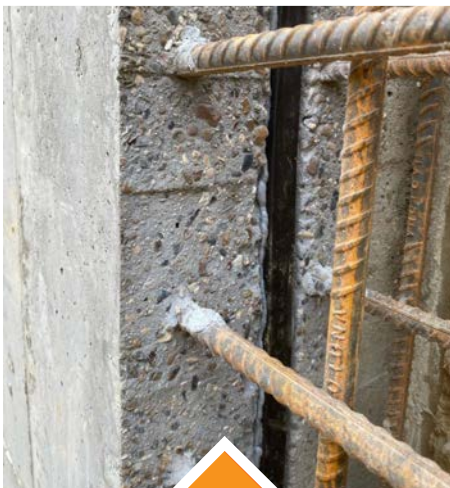




## INSTALLATION GUIDE FOR TT WATERSTOP AND TT SWELLMASTIC S2



## CONCRETE CONSTRUCTION JOINTS



# TT WATERSTOP & TT SWELLMASTIC S2

## JOINT SEALING SYSTEM FOR TT-ADMIX

### APPLICATION INSTRUCTIONS

#### Preparation:

Prior to application of **TT Swellmastic S2/TT Waterstop**, all loose dirt, debris, soil, contaminants must be removed from substrate. **TT Swellmastic S2/TT Waterstop** should not be applied to wet concrete or other surfaces, especially where running water is present or the product will not work. Application to damp areas is acceptable.

#### Application:

Pierce the 'sausage' foil pack of **TT Swellmastic S2** and place it into the Swellmastic barrel gun and apply it as you would a conventional sealant. Extrude a bead of not less than 12mm diameter onto the substrate, ensuring there is no break in the bead. Apply a 12-15 mm bead when using as an adhesive.

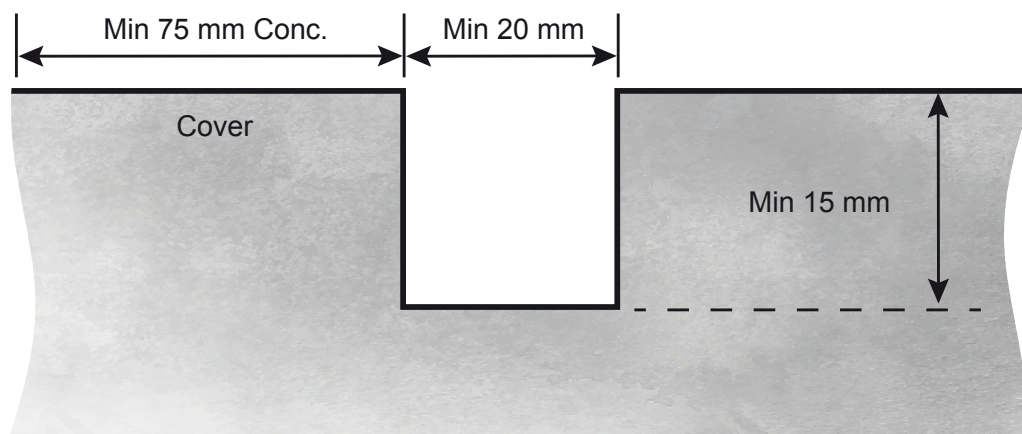
**Note:** During the winter / colder months, if left out in the cold, **TT Swellmastic S2** may be harder to apply. To assist with the application, place the intact foil pack of **TT Swellmastic S2** in a bucket of warm water to soften it but do not split or cut open the packaging. Do not leave the material in the warm water for too long but just long enough to soften for easy application through the barrel gun.

#### Return to Service:

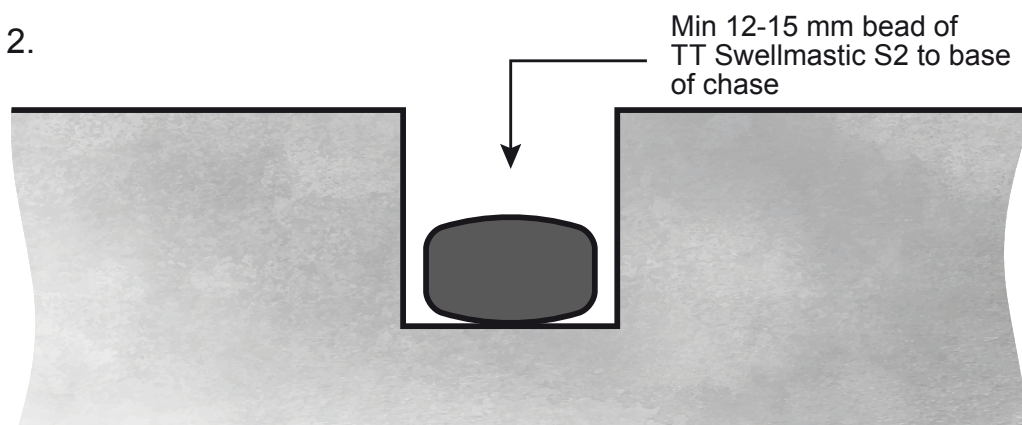
A minimum of 2 hours (depending upon ambient temperature conditions) should be allowed before applying concrete.

**TT Swellmastic S2/TT Waterstop** should be protected from heavy rainfall whilst curing to prevent premature expansion. When placing concrete, do not directly drop or pour concrete straight from pump line on top of the product until it has set. This may dislodge or distort the **TT Swellmastic/TT Waterstop**.

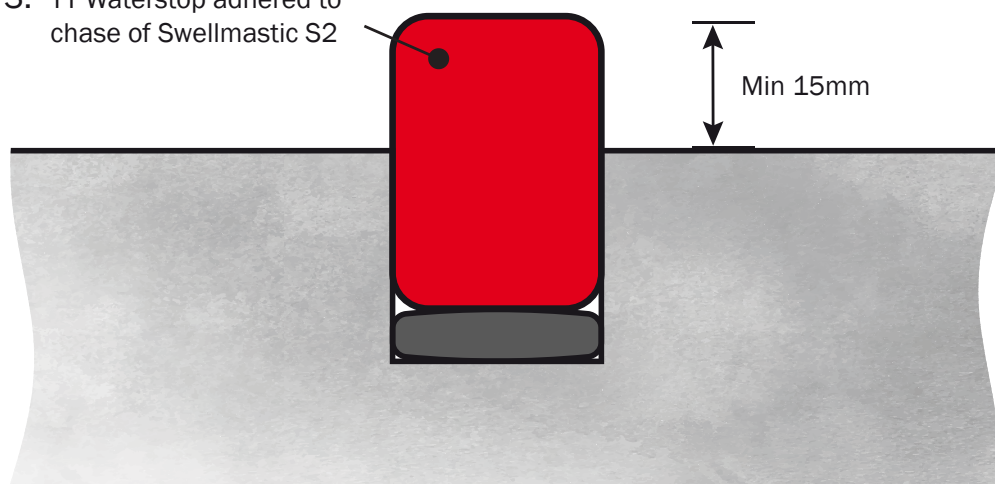
1. Cast chase in centre of wall section/joint section.  
Approximately 20 mm x 15 mm



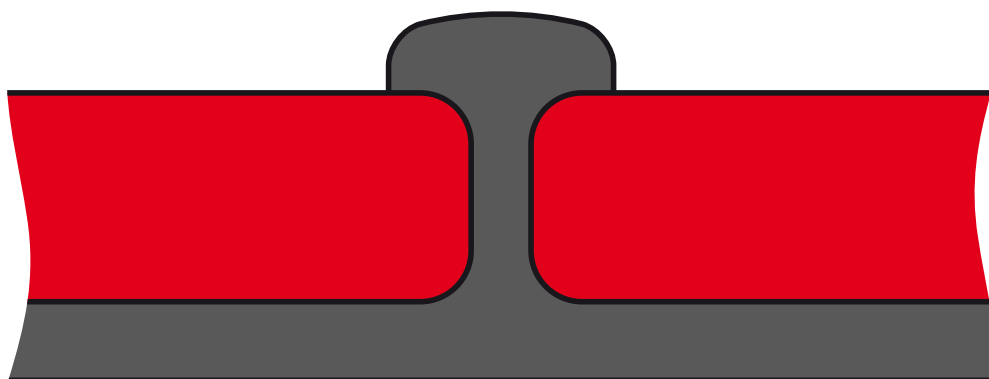
- 2.



3. TT Waterstop adhered to chase of Swellmastic S2



4. Butt Joint option for TT Waterstop (within chase)



## PRODUCT DATA

	COMPONENT A
Colour	Grey
Packaging	Supplied in boxes of 10 x 600ml sausage packs
Storage Conditions / Shelf-Life	Shelf life of 9 months if kept in a dry store at 10-20°C in original unopened packaging. If stored at high temperatures and/or high humidity, the shelf life may be significantly reduced.
Curing Rate	3mm in 24 hours
Swell Ratio	200%
Shore A Hardness	10 – 15
Tack-free time	Approximately 1 hour (at 20°C / 50% RH)
Concrete pour	Allow between 2 – 8 hours (see application instructions)



# INSTALLATION GUIDE FOR TT WATERSTOP AND TT SWELLMASTIC S2

PART OF THE TT ADMIX WATERTIGHT CONCRETE RANGE



## Wykamol Group

Unit 3, Boran Court, Network 65 Business Park, Hapton, Burnley, Lancashire BB11 5TH  
t: +44 (0)1282 473 100 www.wykamol.com e: info@wykamol.com

## Triton Systems

Unit 3-5, Crayford Commercial Centre, Greyhound Way, Crayford, Kent DA1 4HF  
t: +44 (0)1322 318830 www.tritonsystems.co.uk e: info@tritonsystems.co.uk



NBS



Basement  
Waterproofing  
ASSOCIATION

