

---

**style**

moveable partition specialists

presents  
DORMA Hüppe products

---

# i-TRACK

The intelligent track system for added  
convenience and comfort

# USER-FRIENDLY AND FLEXIBLE

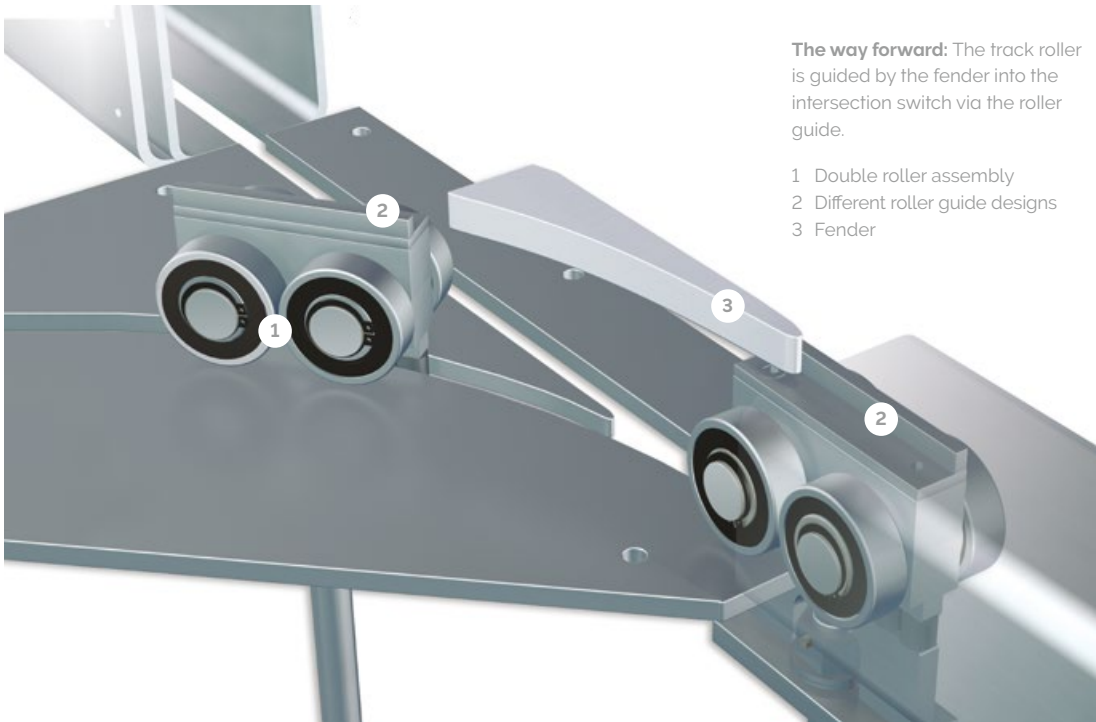
Intelligent track system technology  
systematically conceived

## Curves and intersections independently negotiated

The new i-Track is an intelligent, high-performing track system with curves and switch point intersections designed to ensure easy and convenient partition deployment, particularly in the case of medium height to high and heavy movable walls. It offers user-friendly operation with mechanical coding enabling the elements to their own way "home".

## Modular design for total adaptability

The modular design of the carriers and tracks means that systems can be assembled to meet a wide range of different requirements. Depending on the pairing of the fenders and guides and their various height gradients and positions, i-Track can be used to produce a broad range of combinations offering high flexibility for individual customer configurations.



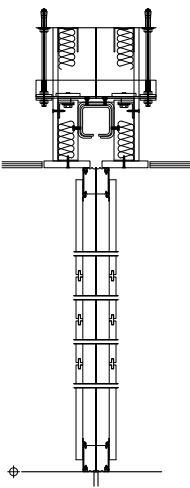
## i-Track at a glance

- For medium height to high and heavy partitions
- Exceptionally convenient, user-friendly system
- Many parking positions possible
- Smooth and quiet, mechanically coded transfer of partition elements
- Flexible adaptability to customer requirements

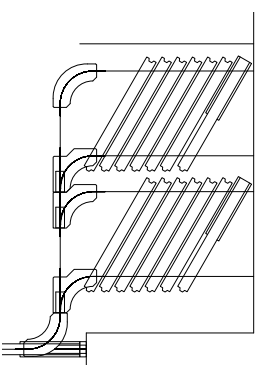


**High, heavy movable walls** are rendered smooth, quiet and reliable by the i-Track system, a modular concept that can be readily adapted to customer-specific requirements.

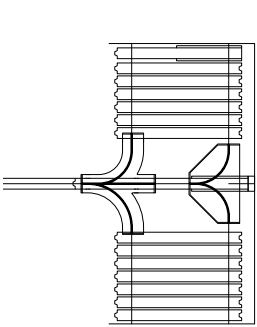
## Vertical section



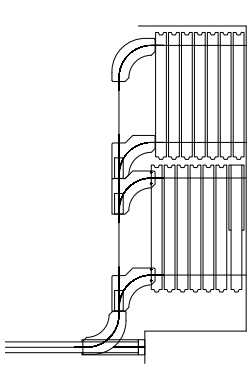
## Stacking/parking arrangements



**Space-saving:** Interconnected track switches only require a minimum center distance between the parked element stacks.



**Mechanically coded:** The elements find their own way to the parking/stacking track, here in a straight parallel configuration.

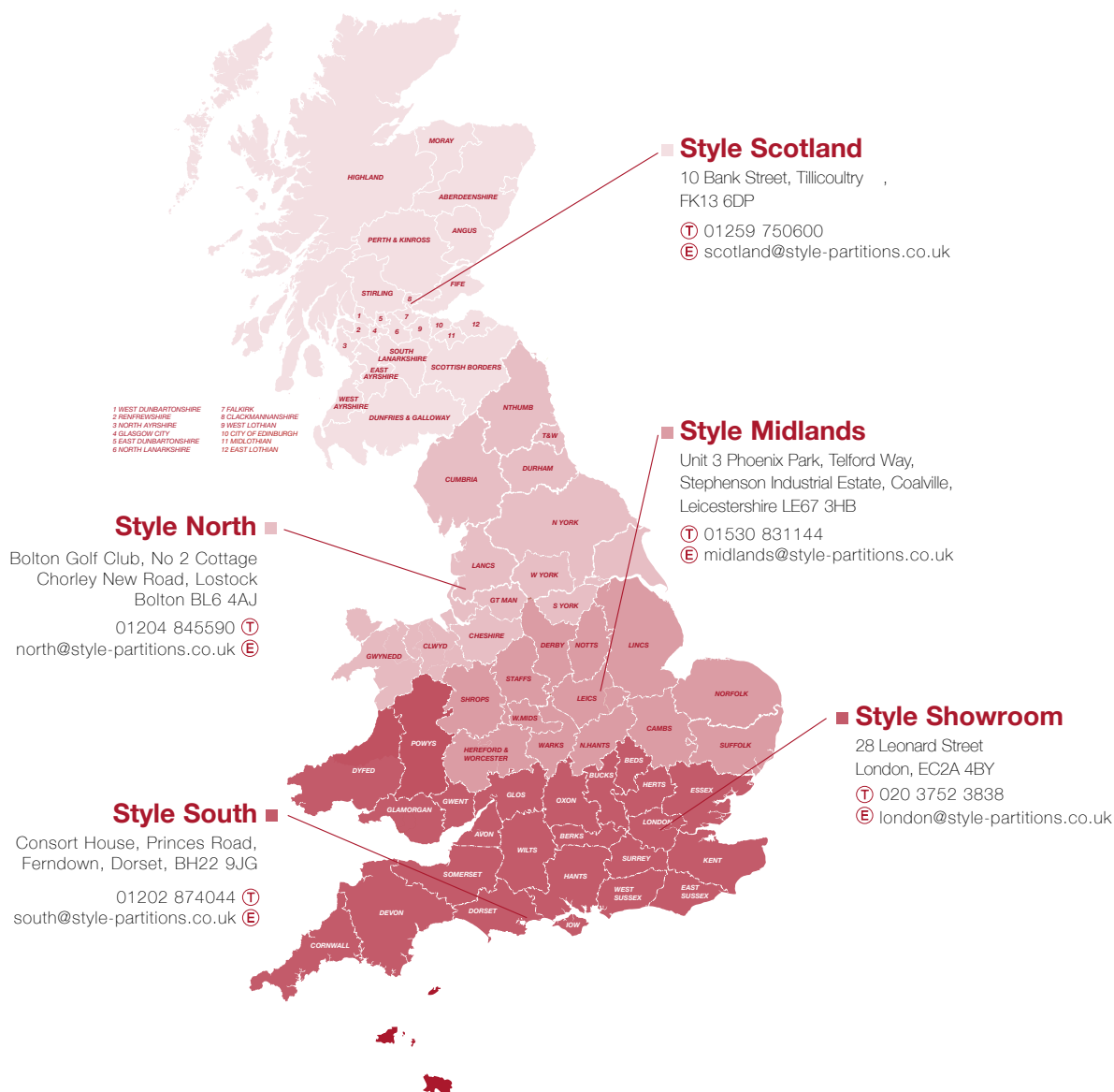


**Angled or straight:** Parking tracks with the elements stacked at an angle are possible for all movable wall heights, while a straight parallel configuration can be implemented up to heights of 7.5 meters.

**moveable partition specialists**

presents  
DORMA Hüppe products

03/18 · Subject to change without notice.



**[www.style-partitions.co.uk](http://www.style-partitions.co.uk)**

