

Description

Delta Plugs are specially designed to provide a fixing point for the Delta MS 500 membrane.

Delta Fixing Plugs have a centrally located internal shank which can accommodate a 5.5mm dia/size 12 screw at a minimum depth of 30mm for subsequent installation of wall ties and/or dry lining systems (11mm shank x 70mm).

Delta Fixing plugs when used in conjunction with Delta Rope offer a watertight seal.

Features

- Pre-located hole in plug head for screw fixings
- Applied with Delta Rope to head of plug offers a watertight seal
- Firm fix into substrates
- Easy to use

Specification

- BS 8102:2022 Protection of below ground structures against water ingress. Code of practice.
- Ancillary product for Delta Cavity Drain System.

Associated Products

- Delta MS 500
- Delta Rope
- Delta MS 500

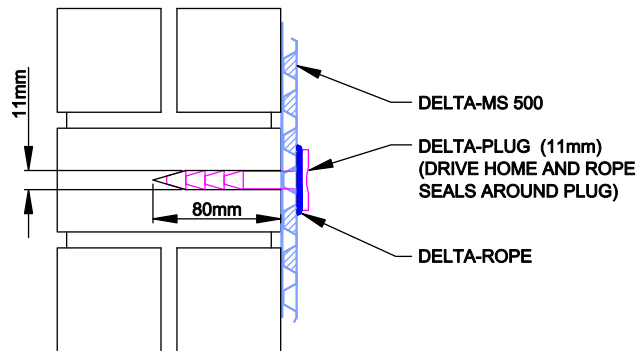
Product Details

DMS 014

Technical Data

Delta Plugs	
DMS	014
Colour	Black
Size	11mm x 70mm Shank
Contents/Packaging	Box of 100
Drill Bit Size	12mm

Technical Drawing - DW-131-1-(F)



USE SIZE 12 SCREWS TO FIX BATTENS
OR METAL LINING SYSTEMS
USE 11mm DRILL BIT

Other Information

All data and information contained in these Product/Technical Data Sheets is up-to-date and correct as at the date of issue. The information given is suggested as guidance and should only be used for evaluating your specific application. Delta Membrane Systems Limited cannot control or anticipate the conditions under which this product may be used, each user should review the information in specific context of the planned use. The information contained in these Product/Technical Data Sheets should not be considered a warranty, expressed, or implied, including but not limited to a warranty of merchantability or fitness for a particular purpose. In no event shall Delta Membrane Systems Limited be liable for any incidental or consequential damages resulting from the use, misuse, or inability to use the product. This exclusion applies regardless of whether such damages are sought based on breach of warranty, breach of contract, negligence, strict liability in tort, or any other legal theory. When in doubt, contact Delta's Technical Team on 01992 523 523.

