



Description

Delta MS 500 is an 8mm studded Type C, Cavity Drainage Membrane, suitable for use on internal faces of walls, floors, and vaulted ceilings as a water management system for the protection of below ground structures against the potentially adverse effects of ground water ingress.

This High-Density Polyethylene (HDPE) cavity drainage membrane has an 8mm studded clear profile creating a 2.25 litre per square meter void suitable for use as part of a Type C waterproofing solution in accordance with BS 8102:2022 Protection of below ground structures against water ingress. Code of practice., in waterproofing structures below ground level (basements) and isolating damp walls above ground level.

Delta MS 500 provides an effective barrier to the transmission of salts and other contaminants.

Features

- 8mm studded profile
- BBA Approved
- Compressive Strength: >250 kN/m²
- Drainage capacity: 2.25 l/s m²
- BS 8102:2022 Type C Waterproofing Protection
- Suitable for Waterproofing and damp proofing
- Suitable for flood resilience (PFR)
- Resistant to chemicals, root penetration, rotproof

Durability

Subject to normal conditions, Delta MS 500 will provide an effective barrier to the transmission of moisture, water, and water vapour for the life cycle of the structure.

Packaging

Supplied in 2.4m x 20m and 2m x 20m rolls

Product Details

DMS 005 – 2m x 20m  
DMS 007 – 2.4m x 20m

Technical Data

Delta MS 500	
DMS	005/007
Material	High Density Polyethylene (HDPE)
Sheet Thickness	0.5mm
Stud Height	8mm
Roll Size	2m x 20m and 2.4m x 20m
Compressive Strength	>250 kN/m²
Drainage Capacity	2.25 l/s m 135 l/min m 8 100 l/h m
Air Volume Between Studs	5 l/m²
Temperature Resistance	-30°C to +80°C
Reaction to Fire	EN13501-1 Class E
R Value	0.12 M²K/W
Chemical Properties	Resistant to chemicals, root penetration, rotproof, neutral towards drinking water



### Fields of Application

- As part of a Delta Cavity Drained Protection System
- Suitable for new, existing, and retrofit basement projects
- Can be linked to other Delta Type C Membranes
- A "reversible" system, which will minimise damage to historical or heritage structures
- Does not require extensive and damaging preparation to wall surface
- Flexibility to cope in structures where movement or vibration can be problematic
- Provides an effect barrier to the transmission of salts, liquid water, and water vapour
- Resistant to chemicals, root penetration, rotproof, neutral towards drinking water
- Suitable for Flood Resilience (PFR)

### Specification

- BS 8102:2022 Protection of below ground structures against water ingress. Code of practice.
- J40/290 High-density polyethylene/ polypropylene studded cavity drain membrane
- J40/47 High-density polyethylene/ polypropylene studded cavity drain membrane
- Classification Pr\_25\_57\_51\_74

### Safety

Always follow the instructions provided in the material safety data sheet and take the precaution described there. Wear appropriate Protective Personal Equipment (PPE) when applying and using the material. Observe all governmental, state, and local safety regulations when processing the material.

### Associated Products

- Delta Cornerstrip
- Delta Qwikseal Plugs
- Delta Plugs
- Delta Sealing Tape
- Delta MS 20
- Delta Perimeter Drainage Channel
- Delta Basement Drainage Systems

### Installation

Please refer to the Delta Type C Installation Guide. Installation Guides can be found at [www.deltamembranes.com/technical/delta-installation-guides/](http://www.deltamembranes.com/technical/delta-installation-guides/). We have a number of "How to" subject related video guides available on your Youtube Channel and Website. Please visit [www.deltamembranes.com/technical-categories/the-video-suite/](http://www.deltamembranes.com/technical-categories/the-video-suite/).

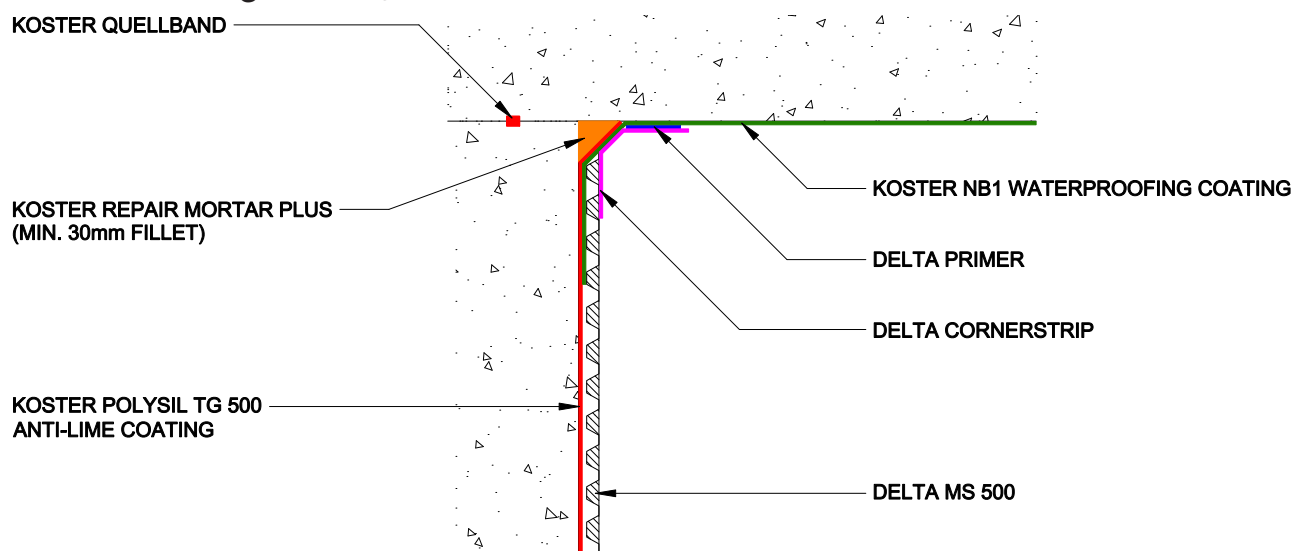
### Storage

- Delta MS 500 is UV stable
- Store safely and keep out of reach of children
- Always store and transport in a secure upright position

### Guarantees

Delta Membrane Systems Limited offer a 30-year Product Guarantee on membranes, seals and fixings when a Delta Cavity Drain System has been installed by a Delta Registered Installer. A list of experienced Delta Registered Installers is available from Delta's offices.

### Technical Drawing - DW-115-1-(C)



### Other Information

All data and information contained in these Product/Technical Data Sheets is up-to-date and correct as at the date of issue. The information given is suggested as guidance and should only be used for evaluating your specific application. Delta Membrane Systems Limited cannot control or anticipate the conditions under which this product may be used, each user should review the information in specific context of the planned use. The information contained in these Product/Technical Data Sheets should not be considered a warranty, expressed, or implied, including but not limited to a warranty of merchantability or fitness for a particular purpose. In no event shall Delta Membrane Systems Limited be liable for any incidental or consequential damages resulting from the use, misuse, or inability to use the product. This exclusion applies regardless of whether such damages are sought based on breach of warranty, breach of contract, negligence, strict liability in tort, or any other legal theory. When in doubt, contact Delta's Technical Team on 01992 523 523.