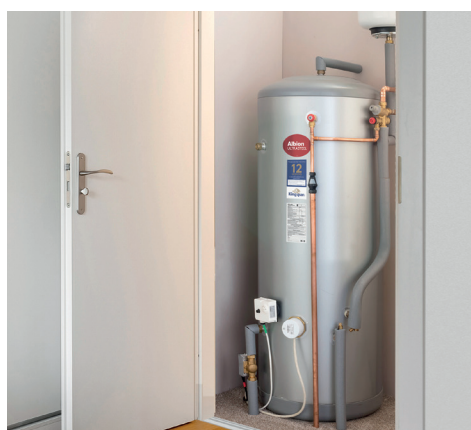
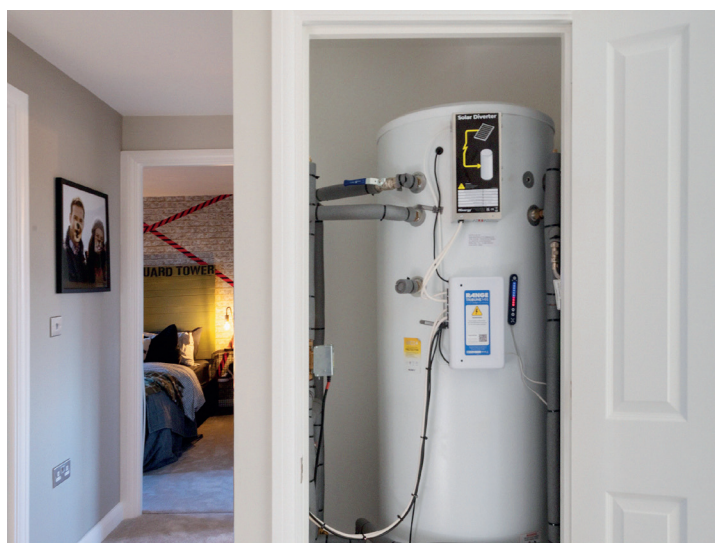


# Overview

## Hot Water Products

Unvented & Vented Cylinders and Cold Water Cisterns



# Albion Ultrasteel

## Unvented Cylinders



### Ultrasteel+ Direct

#### Key Features:

- Internal thermal expansion
- Capacities: 120L to 300L, 120L to 210L (models with utility stand)
- Titanium immersion heaters
- Faster installation
- ERP: B & C



### Ultrasteel+ Indirect & Solar Indirect

#### Key Features:

- Internal thermal expansion
- Capacities: 120L to 300L
- Titanium immersion heaters
- Faster installation
- 50mm insulation
- ERP: B & C



### Ultrasteel Direct

#### Key Features:

- Capacities: 90L to 300L
- External expansion vessel
- Smart immersion heater saving up to 20% electricity
- ERP: B & C



### Ultrasteel Indirect

#### Key Features:

- Capacities: 90L to 500L
- External expansion vessel
- Fast heat up times
- ERP: C



### Ultrasteel Solar Indirect

#### Key Features:

- Capacities: 180L to 500L
- Suitable for off gas grid installations
- Use with solar thermal systems
- External expansion vessel
- ERP: C



### Ultrasteel Slimline Direct

#### Key Features:

- 25% smaller footprint at just 475mm diameter
- Capacities: 90L to 210L
- Smart immersion heater saving up to 20% electricity
- External expansion vessel
- ERP: B & C



### Ultrasteel Slimline Indirect

#### Key Features:

- 25% smaller footprint at just 475mm diameter
- Capacities: 90L to 210L
- Fast heat up times
- External expansion vessel
- ERP: C



### Ultrasteel Horizontal Indirect

#### Key Features:

- Ideal for lofts and locations with height restrictions
- Capacities: 180L to 300L
- New immersion heater position
- External expansion vessel
- ERP: C

# Albion Aerocyl & Range Tribune Unvented Cylinders



## Aerocyl Heat Pump

### Key Features:

- Capacities: 150L to 500L
- External expansion vessel
- Suitable for off gas grid installations
- ERP: C



## Aerocyl Slimline Heat Pump

### Key Features:

- 25% smaller footprint at just 475mm diameter
- Capacities: 150L to 210L
- External expansion vessel
- Suitable for off gas grid installations
- ERP: C



## Aerocyl Heat Pump & Solar

### Key Features:

- Capacities: 180L to 500L
- External expansion vessel
- Suitable for off gas grid installations
- Use with solar thermal systems
- ERP: C



## Aerocyl Heat Pump with Integral Buffer

### Key Features:

- Capacities: 180L to 240L, Integral buffer 50L
- Pre-plumbed and non pre-plumbed models available
- External expansion vessel
- Stand alone buffer tanks available
- ERP: C



## Tribune MXi Indirect with Smart Controls & PV Diverter

### Key Features:

- 45% more insulation for our best ever SAP performance
- PV Diverter
- Mixergy smart controls
- External thermal expansion
- Capacities: 130L to 310L
- ERP: B & C



## Tribune Xe Pre-Plumb & System-Fit

### Key Features:

- 45% more insulation for our best ever SAP performance
- 2.5x faster to install
- Internal thermal expansion
- Capacities: 120L to 300L
- ERP: B & C



## Tribune Xe Direct, Indirect & Solar

### Key Features:

- 45% more insulation for our best ever SAP performance
- Internal thermal expansion
- Capacities: 120L to 300L 180L to 300L (Solar)
- ERP: B & C



## Tribune HE Pre-Plumb

### Key Features:

- 2x faster to install
- Indirect & Solar Indirect models available in both single & twin zone configurations
- External expansion vessel
- Capacities: 120L to 300L
- ERP: C

# Albion Vented & Ferham Vented Cylinders & Cold Water Tanks



## Copper Vented Hot Water Storage Tanks Direct & Indirect

### Key Features:

- Available in a wide range of capacities and sizes
- A selection of coil types
- 35mm or 50mm of high performance HFO foam
- ERP: C



## Copper Vented Hot Water Storage Tanks Combi - Direct & Indirect

### Key Features:

- Built-in header tank
- Available in a wide range of capacities and sizes
- 35mm or 50mm high performance HFO foam
- ERP: C



## Copper Vented Hot Water Storage Tanks Twin Immersion Bosses

### Key Features:

- Twin side or side & top entry immersion heater bosses suitable for Economy 7
- 50mm of high performance HFO foam insulation
- ERP: C



## Stainless Vented Hot Water Storage Tanks Direct, Indirect & Twin Coil

### Key Features:

- All standard sizes available
- Manufactured from 1mm Duplex stainless steel for superior corrosion resistance
- ERP: C



## Ferham Rectangular Cold Water Cisterns

### Key Features:

- Capacities: 18L / 4 Gal
- Stackable
- Robust hard wearing design
- Ideal for use as an expansion cistern in open vented heating systems
- Kits sold separately



## Ferham Oval Cold Water Cisterns

### Key Features:

- Capacities: 68L to 227L / 15 to 50 Gal
- Kitemarked to BS4213:2004
- Stackable
- Robust hard wearing design
- Supplied with lid, jacket and water byelaw kit



## Ferham Circular Cold Water Cisterns

### Key Features:

- Capacities: 114L and 227L / 25 and 50 Gal
- Stackable
- Robust hard wearing design
- WRAS approved materials
- Kits sold separately



## Ferham Low Level (Coffin) Cold Water Cisterns

### Key Features:

- Capacities: 114L to 455L / 25 to 100 Gal
- Robust hard wearing design
- Ideal for lofts and locations with height restrictions
- Supplied with lids, jacket and water byelaw kit

## Kingspan Water & Energy Ltd

48 Thornes Ln, Wakefield, West Yorkshire, WF1 5RR

T: (GB) 0345 260 0258, (NI) 028 3836 4520, E: [hotwater@kingspan.com](mailto:hotwater@kingspan.com)



We take every care to ensure that the information in this document is accurate at the point of publication. Information should not be taken as binding. To ensure you are viewing the most up to date information, please scan the QR code to the left. ©Kingspan and the Lion Device are Registered Trademarks of the Kingspan Group. All rights reserved. Registered Office: 180 Gilford Road, Portadown, Co. Armagh, BT63 5LF.

