

# Building Additions

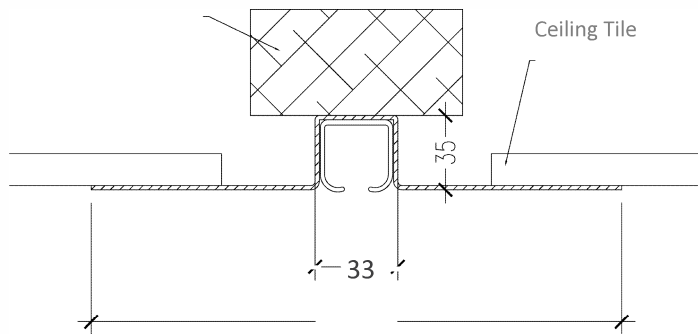
Specialists in Sliding Folding Partitions & Movable Walls

## Fabric Concertina

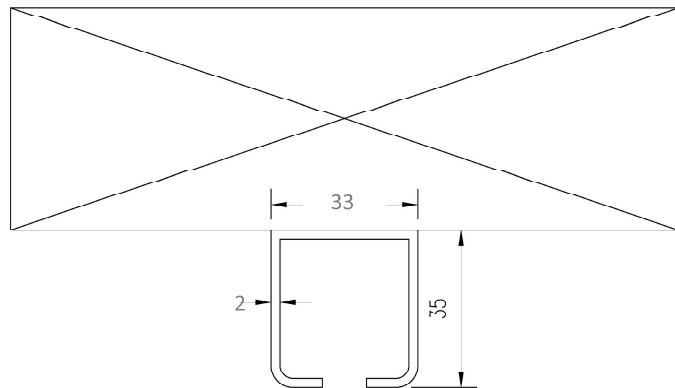


Technical Information

# Head Fixing Detail



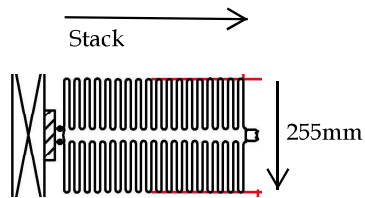
Concealed



Exposed



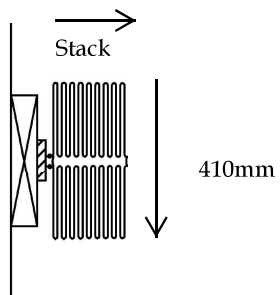
# Stacking



Slimline

## Stack Dimensions

Standard 100  $\frac{1}{6}$  partition width + 125mm  
 Acoustic 200  $\frac{1}{5}$  partition width + 125mm  
 Acoustic 300  $\frac{1}{4}$  partition width + 125mm  
 Acoustic 400  $\frac{1}{4}$  partition width + 125mm



Wideline

## Stack Dimensions

Standard 100  $\frac{1}{6}$  partition width + 125mm /2  
 Acoustic 200  $\frac{1}{5}$  partition width + 125mm/2  
 Acoustic 300  $\frac{1}{4}$  partition width + 125mm/2  
 Acoustic 400  $\frac{1}{4}$  partition width + 125mm/2

## Timber Head Requirements

	Slimline	Head	Jambs
standard		100 x 50mm	100 x 25 mm min
acoustic		150 x 50mm	100 x 25 mm min
<b>Wideline</b>			
standard		150 x 50mm	100 x 25mm min
acoustic		220 x 50mm	100 x 25mm min

# Stack Configurations

## Wide Stack



## Narrow Stack



# Options

Curved



Floor Track



Vision Panels

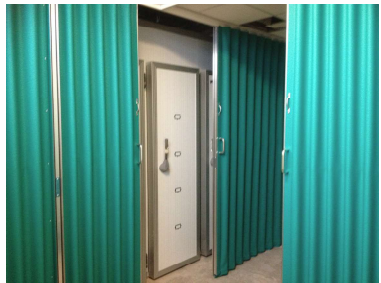


Meeting Posts





# Variety of Applications



Oatmeal	Ivory	Moonrock	Sandsurf
Blue Bay	Laguna Green	Mystic White	Slate Black
Champagne	Latte	Off White	Smoke Grey
Cinder Grey	Lime	Orange	Sport Purple
Grey Light	Lite Beige	Regal Blue	Tide Pool Green
Hearty Burgundy	Lollipop Red	Royal Blue	Yellow

## fabric & colours

Folding fabric partitions are available in a wide choice of 24 standard colours, made from water based inks (with special colours made to order) and can also be made with a different colour on each side. All colours are the same price.

As standard our fabric coverings :-

- \* Are made from strong, durable, light-fast fabric

- \* Achieve fire retardancy to class"1" and class "0" to BS476 Flame spread

- \* Are fully washable and contain antimicrobials to protect against mildew, mould and bacteria

- \* Resistant to common scuffing and burnishing

- \* Most stains can be removed with a mild detergent

Due to limitations of the printing process we cannot guarantee absolute colour accuracy. Please use the above swatches as a colour guide only. Please request a swatch if any doubt.

# Building

ADDITIONS



**Tony Regan**

Director

**01373 454 577**

[tony@buildingadditions.co.uk](mailto:tony@buildingadditions.co.uk)