

Colour for Learning

Colour for Learning

A collection of palettes designed with careful attention and understanding of the user's and staff within an educational setting. The series is broken down into three educational sectors, to help aid selection and placement of colour groups within an interior space. The colour stories are designed to offer combinations that will fit within the Equality Act without compromising on effective and functional design.

The selection of colours within each palette has been combined to create comfortable and engaging collections designed to update and refresh areas in sometimes long established and often tired environments. Many of the palettes will also bring life and modernity to a new building or major refurbishment project

"Designs for learning"

'Here are a few design tips to get you started'

The palettes are not solely exclusive to each sector but as people grow, so does their perception and sophistication in colour choice. The colour groups have been laid out in a way which reflects the learning journey from childhood to maturity.

Take a look at which, (if any) fixture's and fittings you will be retaining, observe and note the colours of these things



Now select a palette from your sector, which most reflects the vision and aspirations of the project. Does this palette work with the colours of your retained items?

Yes?



Breakdown the palette and use no more than 4 colours, always include a neutral for broad walls. This should always be the palest shade. (use our suggested palettes as a guidellne)



*Start to place your colour ideas to define doors and feature walls. Use the palest shade (or white) within the palette for ceilings.
Your design is now in work!*

No?



Consider removing colours from the palette and retaining just 3. Does it work now? (Remember broad wall and woodwork trim can work well as the same colour)



Yes?



No?



Go back and reselect. If nothing within your sector palettes that works for you. Have a look in the next sector up or down. (Do not jump two sectors i.e Further Education to Primary)

Primary & Pre School

Outside In

Fresh landscape shades to support either an urban or rural school setting. A palette to update a tired, traditional school or equally bring a fresh approach to a new build. These colours will complement an existing green or grey flooring. Shades that have staying power & timeless appeal.

Outside In



90YY 83/036

30GG 60/143

90YY 69/419

Goosewing

90YY 48/500

Merlin

Design Tip 1 – Why not try adding colour to framework & keeping all wall space off white, creating a gallery approach. Let the children's artwork take the glory

Design Tip 2 – Use 2 deeper shades for doors to identify child use & adult use only

Design Tip 3 – Use Diamond Matt on walls

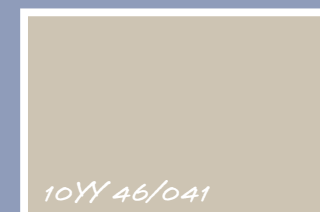


Suggested
Palette

Ebb & Flow

A perfect palette to apply to a new wing or south facing aspect of any school. Use feature colours to the teaching wall, framing the white board and drawing their attention. Smart, clever neutrals will add weight and balance on woodwork, trim and doors.

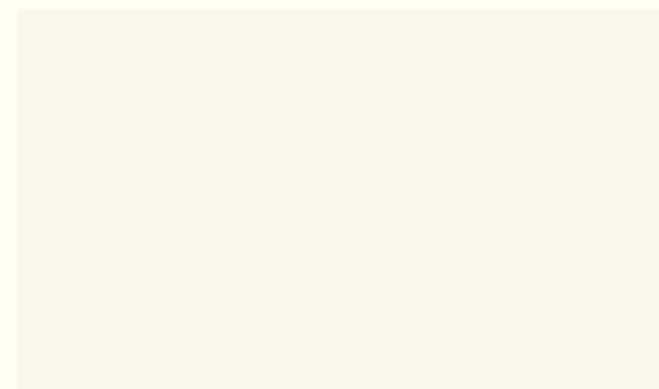
Ebb & Flow



Design Tip 1 – Fantastic palette for existing dark blues in flooring & furniture

Design Tip 2 – Add some complementary orange to the scheme through flooring & furniture

Design Tip 3 – Use the blues as alternate door shades & keep main substrates to easy neutrals for simplicity & style



Suggested
Palette

Free Spirit

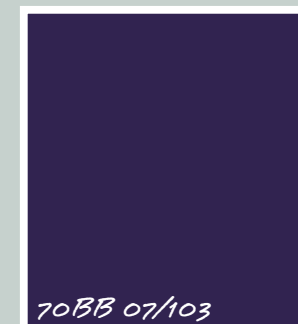
A hardworking palette with endless combinations and applications. One for the girls and the boys, with powerful pinks and sensible blues. Ideal for junior areas with a slightly more grown up approach, there is flexibility to split the palette for larger primaries with defined zones.



Dale White



DH Indigo



70BB 07/103



Plum Blossom



Chinese Parasol



90GG 38/242

Free Spirit

Design Tip 1 – Use the aqua & blues for southerly aspects

Design Tip 2 – Add functionality with deep blue flooring

Design Tip 3 – Keep finishes in matt & satin to reflect modernity in style



Suggested
Palette

Play House

An energetic and witty group of colours, which are fresh and optimistic for the beginning of a child's educational journey. Used in pockets, alongside the broad wall off white, this is a palette for success in almost any primary school.



Timeless

60YY 66/487

90YY 61/504

50BB 18/276

90GG 38/242

30BG 15/322

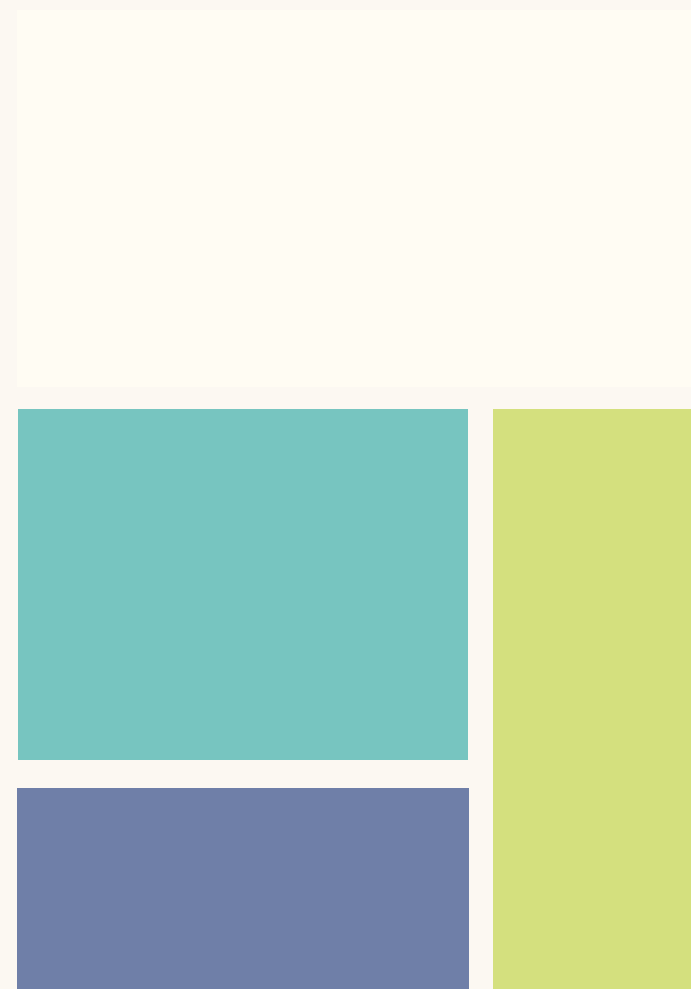


Play House

Design Tip 1 – Complement with primary pink or red plastic seating

Design Tip 2 – Why not reflect the colours within a bespoke flooring for story time area?

Design Tip 3 – Very useable palette within an open plan primary or pre-school



Suggested
Palette

Zonal Zest

Cheerful, chatty, communicative colours to give vibrance and energy to any modern primary school setting.

Useful in open plan situations and glazed partitioning between learning zones. Apply the citrus shade in blocks, using the neutral as a broad wall and the complementary stronger neutrals for durability on doors and skirting.



70YY 83/037

50YY 63/041

50YY 60/538



10YR 21/436

50YY 33/065

04YY 51/583



Zonal Zest

Design Tip 1 – Looks great with deep grey flooring & zone with an orange carpet section for story time & red for reading

Design Tip 2 – Select grey desks to fit with this & any later paint schemes

Design Tip 3 – In sunny rooms, complement with stainless mesh blinds or zingy plains to match the paints



Suggested
Palette

Secondary

Natures Dimensions

A quirky and exciting palette, capable of creating fantastic transitional space. Great for zoning a building and injecting spirit. Versatile, smaller palettes will provide useful schemes taken from this unique range. Powerful colours, ideal for a new building with basic design features.

Natures Dimensions



Dale White



30YY 51/098



30BB 32/139



10YY 27/060



30GG 47/180

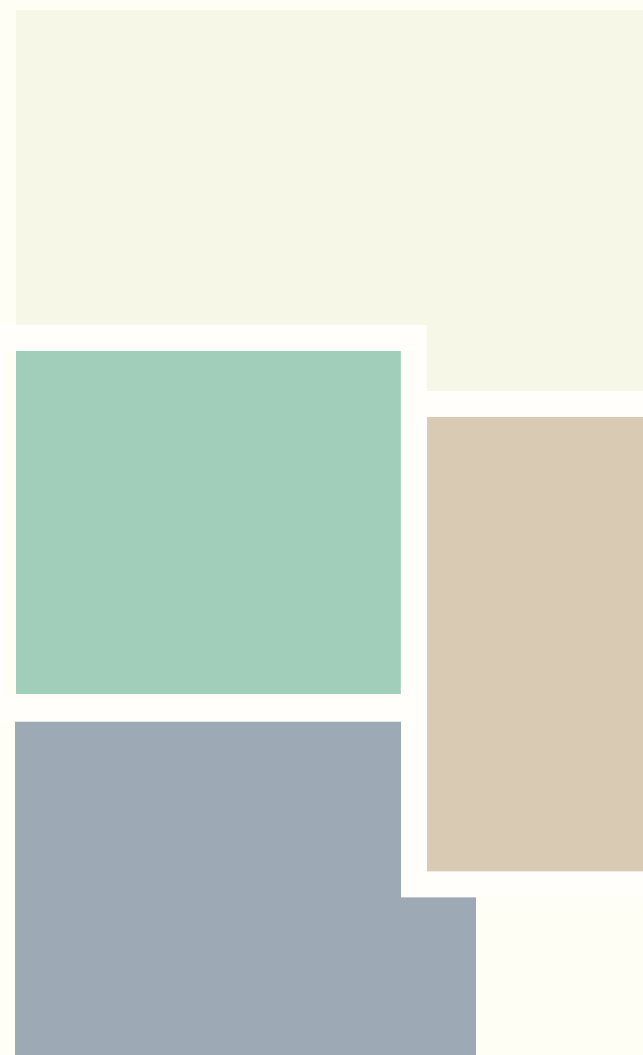


Javelin

*Design Tip 1 – Perfect
for a southerly aspect*

*Design Tip 2 – Use just
the neutrals with
funky yellow & red
furniture*

*Design Tip 3 – The blue
& green will give any
classroom a fab
feature wall*



Suggested
Palette

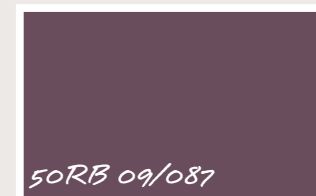
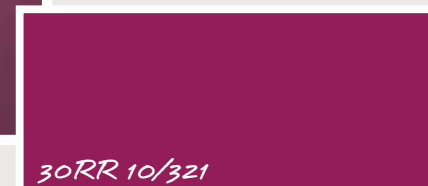
Contradiction

Playful yet mature collection of colours, enabling a diverse approach for colour application to a multi block school site.

Allowing strength of shade for communal accents and muted tones, where a softer application is desired.



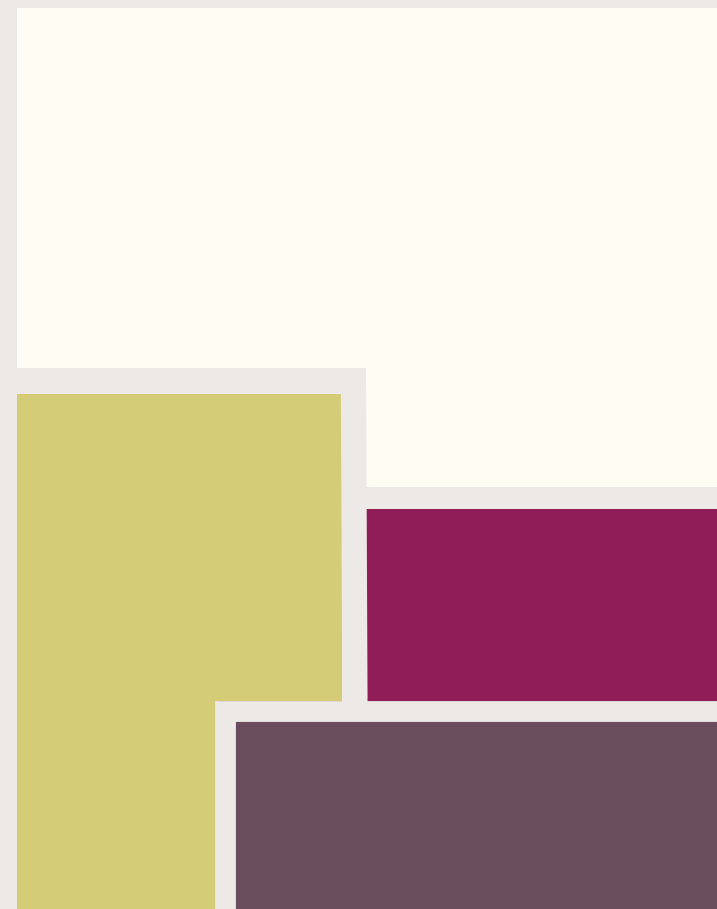
Contradiction



*Design Tip 1 – Try
using with polished
concrete or granite
floors*

*Design Tip 2 –
Highlight stairwells
with a feature colour*

*Design Tip 3 – Reduce
maintenance by using
a single neutral broad
wall throughout the
school*



Suggested
Palette

Fruitful flavours

There is an Autumnal weighting to this collection of cosy, yet contemporary, colours. Depth of shade adds an evocative twist, inspiring modern application of a traditionally comforting scheme. The raw shades of nature, mixed with complimentary neutrals of flax and down, create a useable and friendly palette.



Green Clay

80YR 27/530

70Y 27/418

30Y 22/059

40Y 49/546

30Y 14/070

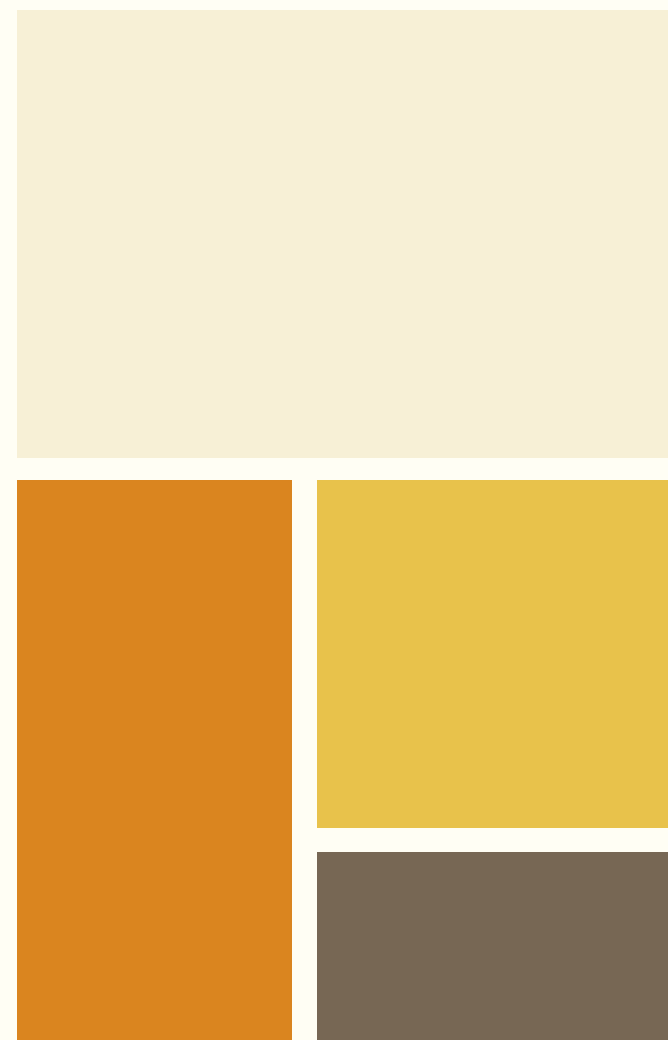


Fruitful flavours

Design Tip 1 – Yellow, orange & green will make great focal teaching wall shades

Design Tip 2 – A palette for an environment lacking in natural daylight

Design Tip 3 – Keep flooring & furniture neutral



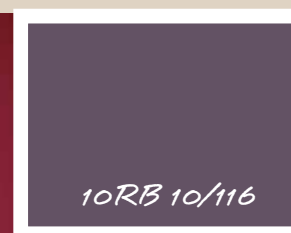
Suggested
Palette

Funky Infusion

A mix of clean and creative colour, with variety and depth of shade. Mimics modernity and clean lines, with minimal clutter. A perfect palette to use as colour blocks and can also twist to use as several softer sub-palettes. Clever positioning is the key to success with this colour collection.



Funky Infusion



*Design Tip 1 – Use
neutrals & purples to
create a mature palette
for staff areas*

*Design Tip 2 – Create
neutral classrooms & keep
the fun shades for pockets
of colour along the
corridors*

*Design Tip 3 – Perfect
palette for a westerly
aspect*



Suggested
Palette

Expression Zone

Confident colour to inspire and give strength to a space. These shades are the ideal solution for focal effect in teaching and transitional areas. Intuitively connective colours, which will balance and flow throughout any style of school.

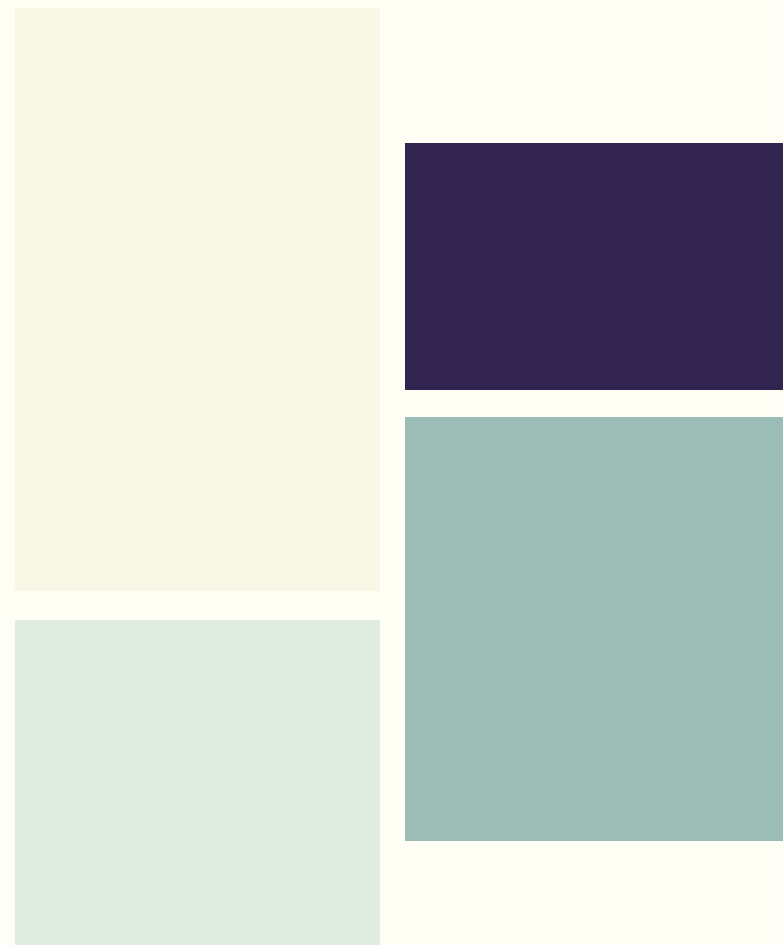


Expression Zone

Design Tip 1 – Lift shady areas with the lovely lime

Design Tip 2 – Add hot pink furniture to give this scheme the edge

Design Tip 3 – Modernise a period school setting by painting all broad walls and trim the fresh off-white

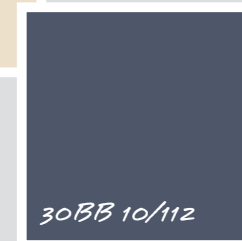
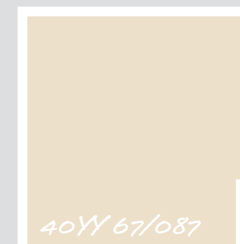
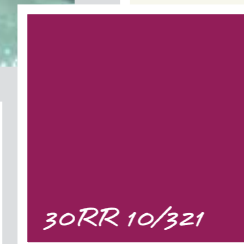
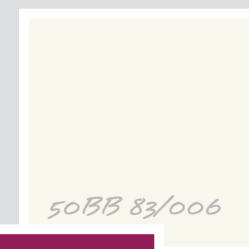


Suggested
Palette

Further Education

Urban Force

A muted palette complemented with strong magenta. Colours which easily break into smaller groups for application in the more minor redecoration projects. This group of shades can be mistaken as being a reserved palette but when used in the correct proportions can be a powerful statement.



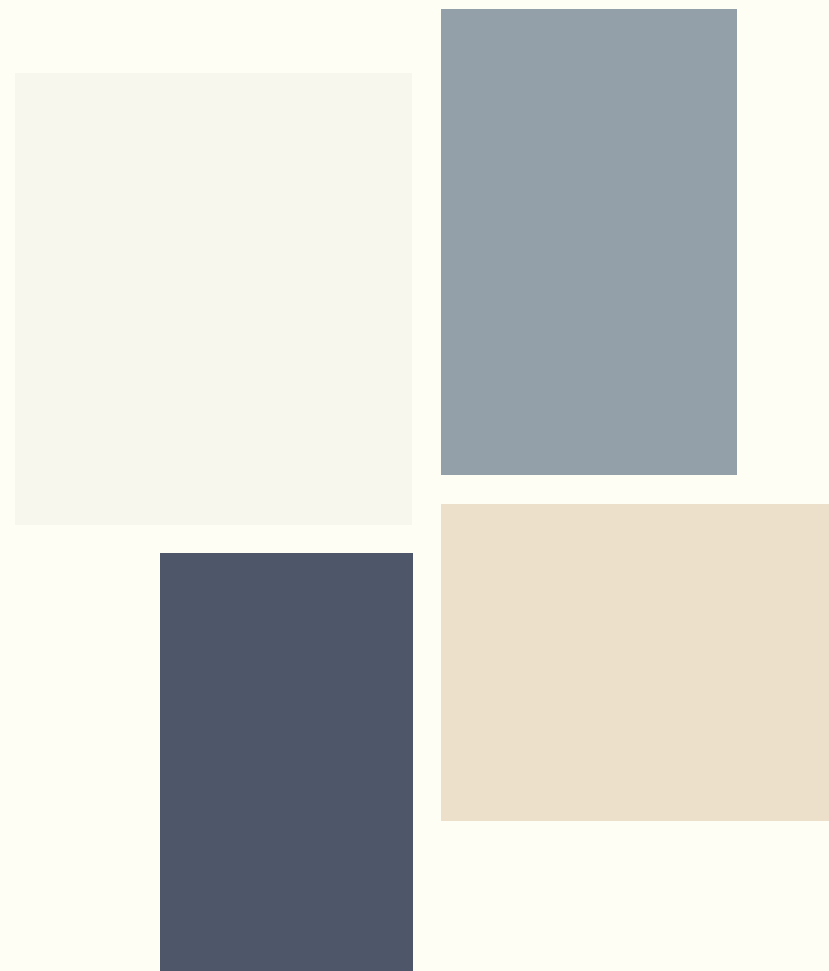
Urban Force



Design Tip 1 – Why not add orange furniture to give zing to the space?

Design Tip 2 – Will look great with steel & chrome finishes

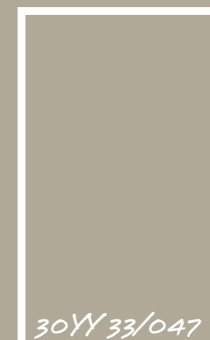
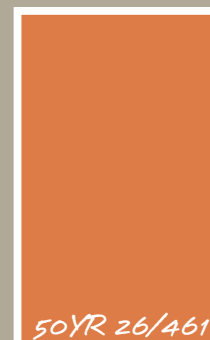
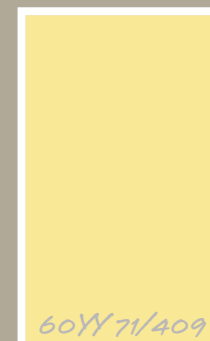
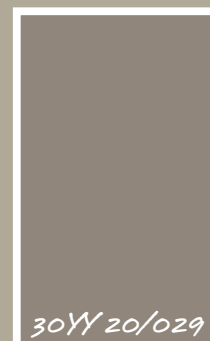
Design Tip 3 – Blue / greys are durable & will work well as corridor areas



Suggested
Palette

Refined Concept

As the title defines, this group of colours has a refined element of subtle neutrals combined with brave and communicating pure shades. These add zest and impact to a scheme. The key to success within this palette is to use the neutrals as backdrops and the orange and yellow tones as vibrant accents.

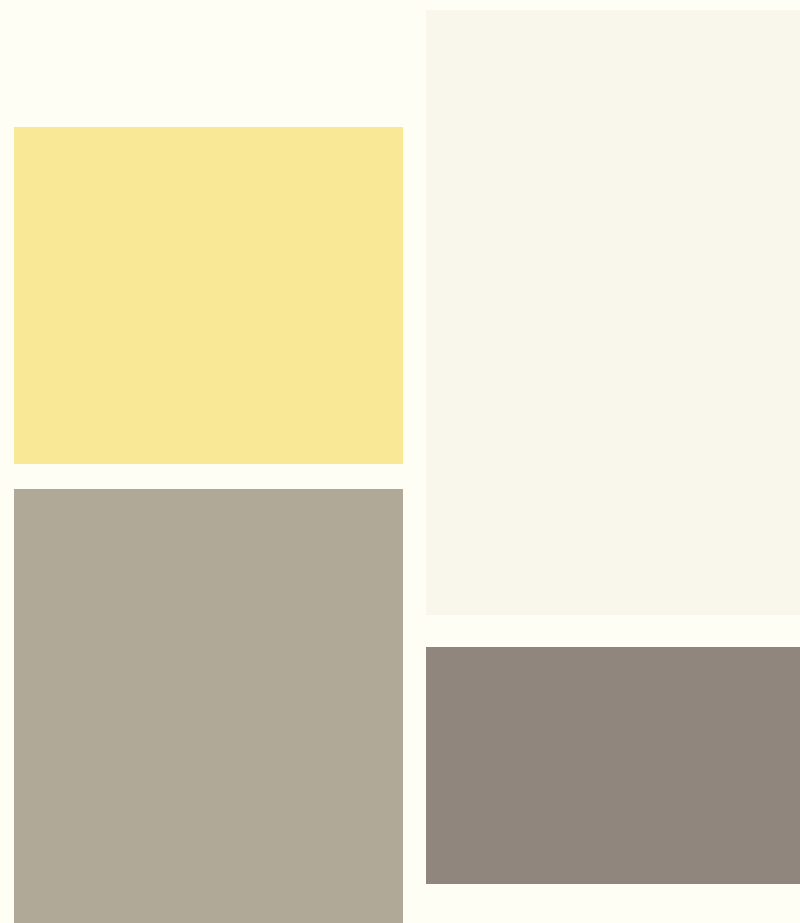


Refined Concept

*Design Tip 1 – Use
alongside urban substrates,
such as steel, concrete &
chequer plate*

*Design Tip 2 – Use the
accent shades to highlight
a white board teaching wall
or frame information
boards*

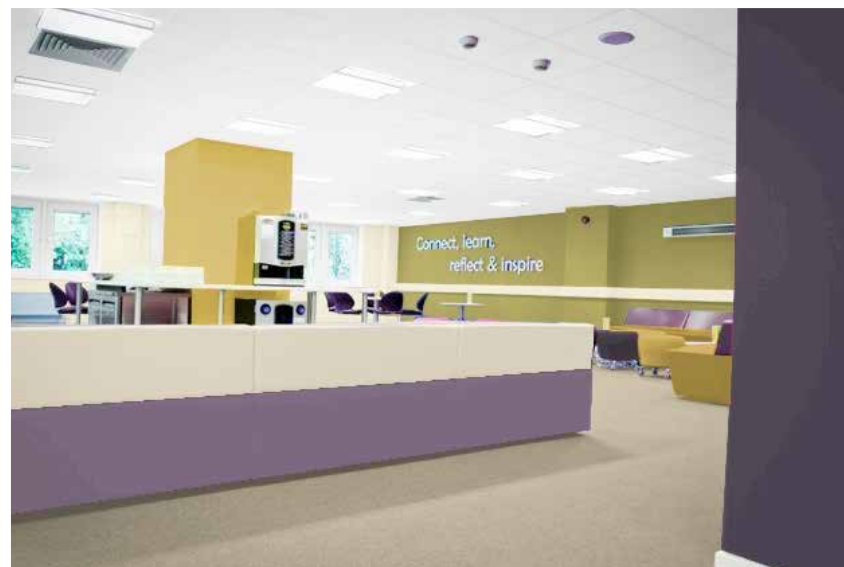
*Design Tip 3 – Keep to the
neutrals & use colour
within the flooring
specification*



Suggested
Palette

Enduring Worlds

Beautifully warm and restful shades. An eclectic mix of natural tints pulled from the landscape. Echoing wood, stone, sand and earth, the addition of a berry shade adds balance and contrast to the palette. This collection will split endless times to create warm and endearing interior spaces.



Ivory Lace

45YY 67/120

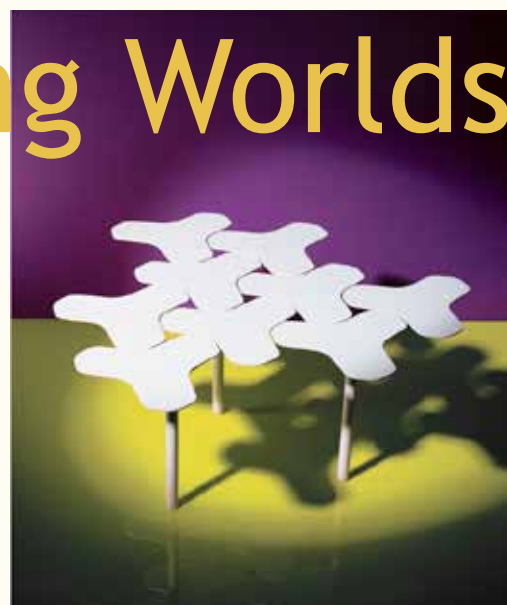
60YY 45/382

40YY 49/546

50RB 09/087

30YY 11/076

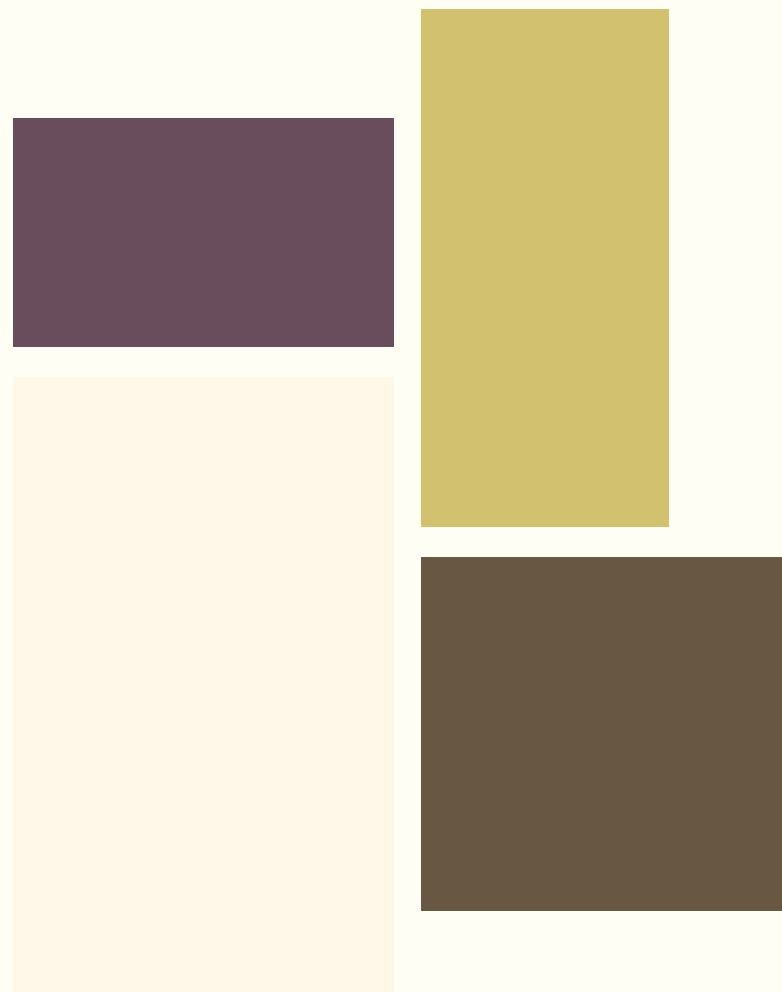
Enduring Worlds



Design Tip 1 – Break into small palettes for zoning a building

Design Tip 2 – A palette for group gatherings or social learning

Design Tip 3 – Stick to neutrals for a historical building

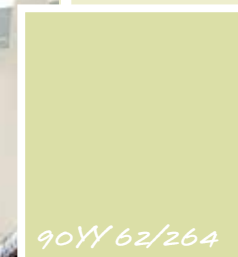
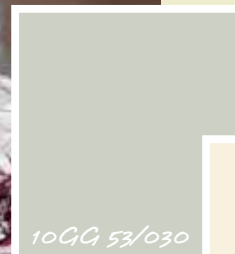


Suggested
Palette

Intellectual Elegance

Sophisticated colours, which evoke calm and grandeur. This palette will have stylish presence in either a traditional or modern educational setting. The warm and cool neutrals benefit this group of colours enabling them to be used in both north and south facing aspects.

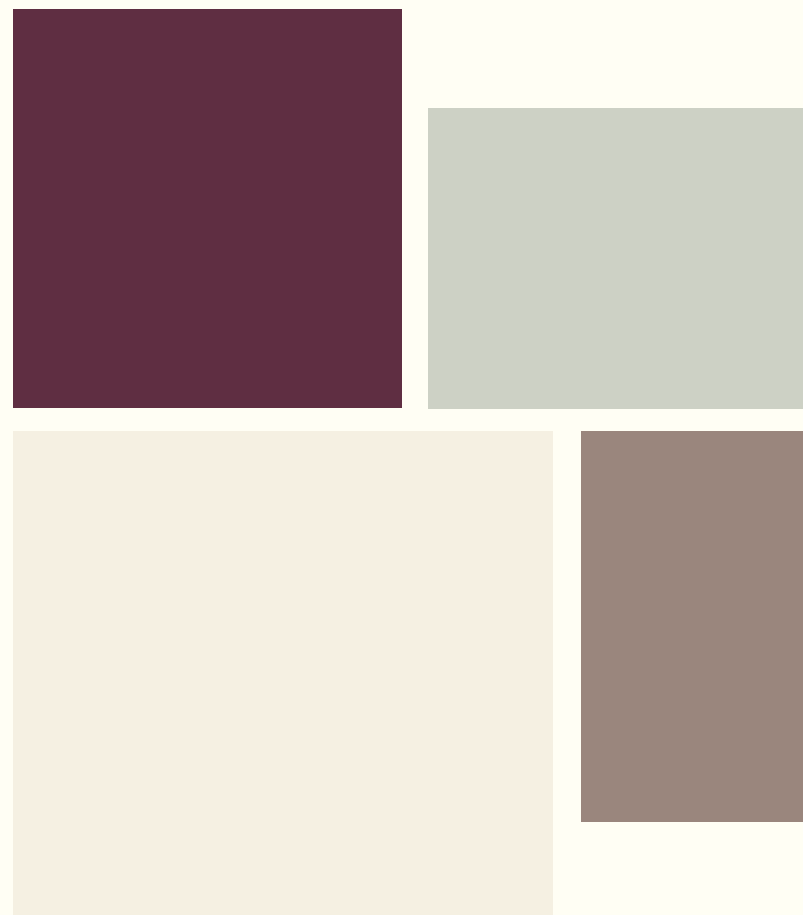
Intellectual Elegance



Design Tip 1 – The natural tones of this palette will sit very well within a glazed structure, linking it to an external rural environment

Design Tip 2 – Add richness & strength to a zone with a bold aubergine feature wall

Design Tip 3 – Use the muted duck egg shade with a combination of neutrals to reflect an elegant heritage scheme



Suggested
Palette

Connection Point

Statement shades, reflective of an industrial past. A versatile colour grouping, ideal to use with bold architectural elements. Perfect to pitch with steel, brick and stone features.

Useful with contemporary restorations, with either a mid-tone neutral or a clean off-white. Also an ideal zoning palette.

Connection Point



Wiltshire White

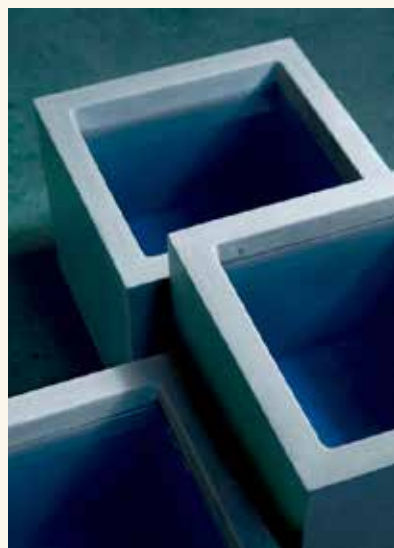
Dove White

30BG 08/143

10GG 53/030

40YY 63/473

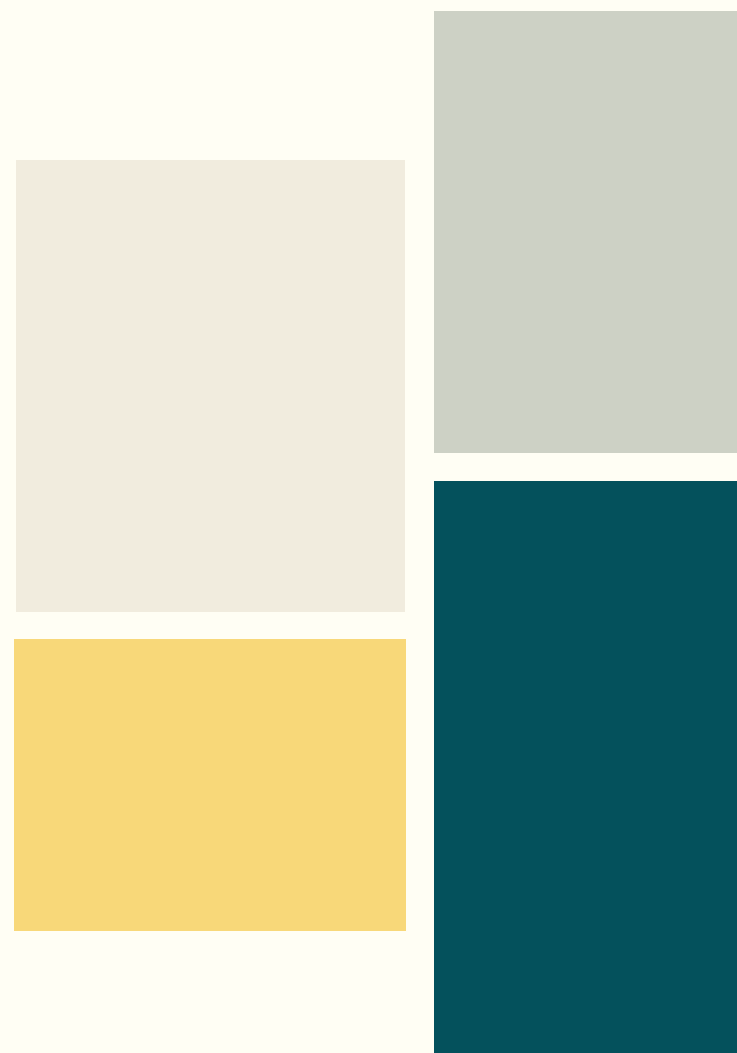
Antwerp Blue



Design Tip 1 – Ideal palette to give identity to a science or engineering faculty

Design Tip 2 – Use neutrals alone to create a canvas approach for an art & design school

Design Tip 3 – Serious blues work well for feature walls within a business environment enhanced with a quirky yellow



Suggested
Palette

We cannot guarantee an exact colour match of any on-screen or custom-printed colour to the colours of our actual products, and the colours contained in this guide should not be relied on as such.
Colours may vary depending on your screen or printer settings and resolution.