

Top Hats & Flexible Top Hats

For sealing to a gas barrier and at the intersection of pipe projections

Use

- In areas outlined in BRE document 'Radon' guidance on protective measures in new dwellings
- When gas protection is required across the footprint of the building
- Crossing cavity wall constructions to maintain gas barrier integrity
- Forming internal perimeter trays to allow membranes continuity
- Collars for service pipe protrusions
- Following a risk assessment where the requirement is for a good gas protection measure against Radon, Co2, Methane and Hydrocarbon
- To be designed and installed in a continuous system around the whole building perimeter

Features and Benefits

- Preformed mouldings eliminate the need for site fabrication to prevent errors through poor workmanship
- Easy to handle, flexible, tough, durable and puncture resistant
- Can be used for multi-storey or high-loading applications – will not extrude under high loads up to the point of compression failure of wall
- Wide range of standard components with special tailor made accessories also available
- Fully itemised scheduling service

Quality

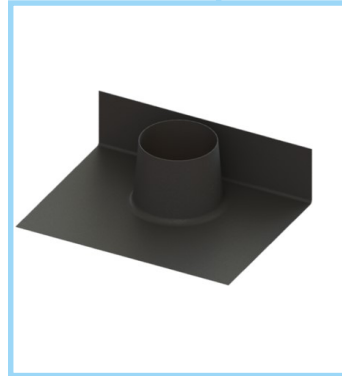
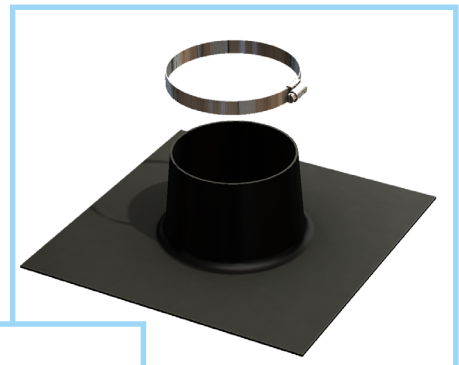
- Manufactured to BS EN ISO 9001 and BS EN ISO 14001
- Satisfies all NHBC requirements
- Meets BRE requirements
- Complies with Building Regulation Approved Documents C1 and C2
- Meets all relevant British Standards

Material and Colour Choice

- Formed in 2mm medium density polyethylene and/or polypropylene
- Available in black only

Installation Advice

Units will require tape and seal - tape sold separately. Use GTAPE01 to make the seal between joint surfaces. Use GTAPE02 to seal upper surface to minimise lap lifting if used in concrete floors



Environmental Product Declaration

A quantification of environmental information regarding the life cycle of the TH110, TH135 & TH160. GWP total is for production stages A1-A3. Verified in accordance with ISO 14025. View the full EPD at timloc.co.uk.

Product	EPD Reference	EPD Mass (KG)	GWP A1-A3 (KG CO2e)
TH110	EPD HUB, HUB-1836	0.175	4.38E-03
TH135	EPD HUB, HUB-1836	0.235	5.88E-03
TH160	EPD HUB, HUB-1836	0.235	5.88E-03

Products in the Range

Top hat pipe collars (TH055, TH082, TH110, TH135, TH160)

Top hat pipe collars are available in sizes from 55mm to 160mm. A standard range of preformed pipe sleeves that are designed to have sealing tape applied to the unit base to offer a unit for sealing to a gas barrier and at the intersection of pipe projections. Common applications are for soil / service pipes passing vertically via a gas barrier or membrane to maintain a continuous seal. Top hats are suitable for installation at ceiling level for pipe protrusions to assist in reducing air leakage. All jubilee clips are supplied separate to top hat units.

Jubilee clips size 5 for TH055
Jubilee clips size 6 for TH110
Jubilee clips size 7 for TH160

Flexible top hat (77110, 77135)

The flexible top hat has been designed to be flexible enough to fit around difficult applications and is perfect for use in tight situations where a pipe is located close to a wall

Product Codes

Description	Product Code
Top hat pipe collar 55mm	TH055
Top hat pipe collar 82mm	TH082
Top hat pipe collar 110mm	TH110
Top hat pipe collar 135mm	TH135
Top hat pipe collar 160mm	TH160
Jubilee clips size 5, 6 or 7	JCLIP 5, 6 or 7
Flexible top hat pipe collar 110mm diameter	77110
Flexible top hat pipe collar 135mm diameter	77135
Gastite sealing tape 15m x 100mm	GTAPE01
Girth tape 75m x 50mm	GTAPE02