

## Roof ventilation solutions

### RTV-C | Castellated Tile Vent

Profiled roof tile vent to enable ventilation directly into a roof space or connect to a ducted ventilation system

#### Uses

- On roofs with Castellated profile roof tiles
- Enables ventilation directly into a roof space
- Can also be connected to a ducted ventilation system inside the building

#### Features and Benefits

- Suitable for roofs with a minimum pitch of 20°
- Free ventilation area of 10,000mm<sup>2</sup>
- Sized to replace one Castellated tile to provide a continuous visual appearance along the roof when viewed at all levels
- Shaped to manage and channel rainwater back down onto the roof tiles and away from the vent opening
- 4mm spaced external grille to prevent rainwater ingress and keep out large insects, vermin and debris
- Integrated clips to ensure a secure fit to surrounding roof tiles
- UV stabilised top for continuous exposure to sunlight
- Lightweight and easy to handle

#### Relevant Standards

- Independently tested by BRE for deluge and wind driven rain to PD CEN/TR15601:2012
- BS EN 490:2011 Concrete roofing tiles and fittings for roof covering and wall cladding - product specifications (+A1:2017)
- BS 5250: 2021 Management of moisture in buildings - Code of practice
- BS 5534:2014 Slating and tiling for pitched roofs and vertical cladding - code of practice (+A2:2018)
- Manufactured to BS EN ISO 9001:2015 and BS EN ISO 14001:2015
- Complies with all relevant sections of the Building Regulations 2010
- Satisfies all relevant NHBC requirements

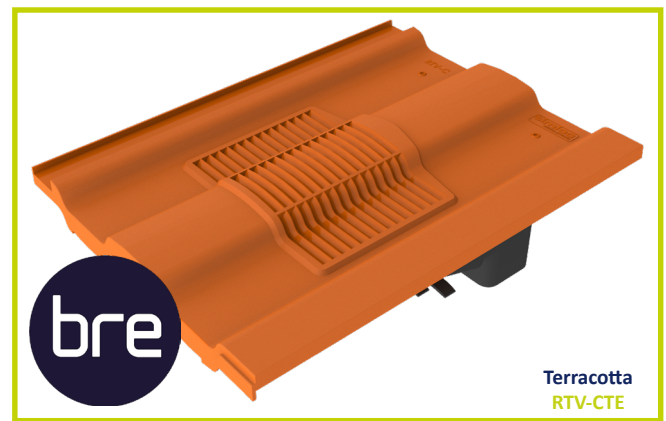
#### Compatibility

Castellated large format tiles from all major manufacturers including:

- Marley Ludlow Major
- Russel Cheviot
- Redland Renown
- Lagan Square Top
- Sandtoft Lindum

#### Material and Colour Choice

- Available in Terracotta, Brown, Grey and Red
- Top - UV stabilised coloured injection moulded Polypropylene with textured finish
- Base - Black injection moulded Polypropylene



**Terracotta**  
**RTV-CTE**



**Brown**  
**RTV-CBR**

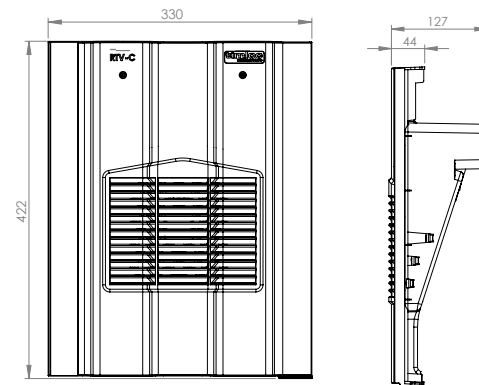


**Grey**  
**RTV-CGR**



**Red**  
**RTV-CRD**

#### Product Dimensions



#### Compatible Accessories

- Full datasheets available for all accessories

Description	Product Code	Product Image
110mm Flexi-Pipe to aid connection to ventilation duct or soil vent pipe	RTV-KIT1	
Standard adapter to attach the roof tile vent to 110mm ductwork	RTV-ADS	
Multi adapter (RTV-ADMULTI) to aid connection to 100/110/125/150mm duct sizes	RTV-ADMULTI	
RTV-KIT1 and RTV-ADS available as one kit	RTV-KIT2	

#### Airflow Test Data

RTV-C (100mm duct)	
Flow Rate l/s	Static pressure difference Pa
10	2
20	8
30	17
40	30

#### Product Codes

Product Description	Colour	Weight	Box Quantity	Product Code	Pack Quantity	Pack Code	Pallet Quantity
Castellated Roof Tile Vent	Terracotta	0.87kg	1	RTV-CTE	8	RTVMULTI-CTE	136
Castellated Roof Tile Vent	Brown	0.87kg	1	RTV-CBR	8	RTVMULTI-CBR	136
Castellated Roof Tile Vent	Grey	0.87kg	1	RTV-CGR	8	RTVMULTI-CGR	136
Castellated Roof Tile Vent	Red	0.87kg	1	RTV-CRD	8	RTVMULTI-CRD	136

**NB.** RTV-C available in single, pack or pallet quantities. For pack quantities, 8 tile vent assemblies are packaged in one large box.