

## Roof ventilation solutions

### RTV-SIS | Small Inline Slate Vent

Small Inline Slate Vent to enable ventilation directly into a roof space or connect to a ducted ventilation system

#### Uses

- On roofs with Natural or Synthetic Slates
- Enables ventilation directly into a roof space
- Can also be connected to a ducted ventilation system inside the building

#### Features and Benefits

- Suitable for roofs with a minimum pitch of 22.5°
- Free ventilation area of 9,450mm<sup>2</sup>.
- Sized to replace one slate to provide a continuous visual appearance along the roof when viewed at all levels
- Shaped to manage and channel rainwater back down onto the roof tiles and away from the vent opening
- Provides a 110mm duct connection with the optional RTV-ADIS duct adapter
- 4mm spaced external grille to prevent rainwater ingress and keep out large insects, vermin and debris
- Lightweight and easy to handle

#### Relevant Standards

- Independently tested by BRE for deluge and wind driven rain to PD CEN/TR15601:2012
- BS EN 490:2011 Concrete roofing tiles and fittings for roof covering and wall cladding - product specifications (+A1:2017)
- BS 5250: 2021 Management of moisture in buildings – Code of practice
- BS 5534:2014 Slating and tiling for pitched roofs and vertical cladding – code of practice (+A2:2018)
- Manufactured to BS EN ISO 9001:2015 and BS EN ISO 14001:2015
- Complies with all relevant sections of the Building Regulations 2010
- Satisfies all relevant NHBC requirements

#### Compatibility

Natural or Synthetic slates from all major manufacturers in smaller sizes such as:

- 400 x 250mm
- 400 x 225mm
- 400 x 200mm
- 350 x 250mm
- 350 x 200mm
- 300 x 200mm

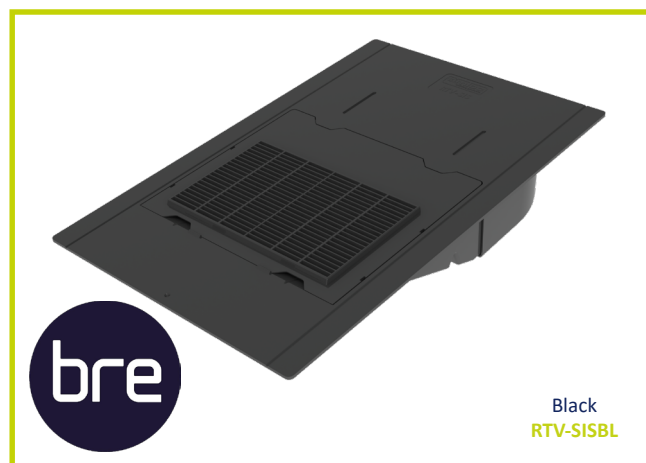
#### Material and Colour Choice

- Injection moulded Polypropylene with textured finish
- Available in Black

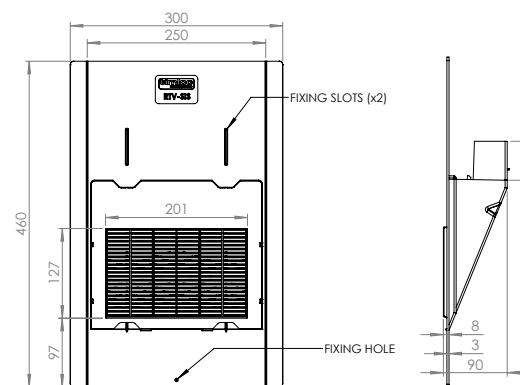
#### Product Codes

Product Description	Colour	Weight	Box Quantity	Product Code	Pack Quantity	Pack Code	Pallet Quantity
Small Inline Slate Vent	Black	0.64kg	1	RTV-SISBL	5	RTVMULTI-SISBL	120

NB. RTV-SISBL available in single, pack or pallet quantities. For pack quantities, 5 Small Inline Slate vent assemblies are packaged in one large box.



#### Product Dimensions



#### Compatible Accessories

- Full datasheets available for all accessories

Description	Product Code	Product Image
110mm Flexi-Pipe to aid connection to ventilation duct or soil vent pipe	RTV-KIT1	
Inline Slate adapter to attach the roof tile vent to 110mm ductwork	RTV-ADIS	
Multi adapter (RTV-ADMULTI) to aid connection to 100/110/125/150mm duct sizes	RTV-ADMULTI	
RTV-KIT1 and RTV-ADIS available as one kit	RTV-KIT4	

#### Environmental Product Declaration

A quantification of environmental information regarding the life cycle of the Small Inline Slate Vent. GWP total is for production stages A1-A3. Verified in accordance with ISO 14025. View the full EPD at timloc.co.uk.

EPD Reference	EPD Mass (KG)	GWP A1-A3 (KG CO2e)
EPD HUB, HUB-1836	0.675	1.69E-02

#### Airflow Test Data

RTV-SIS (100mm duct)	
Flow Rate l/s	Static pressure difference Pa
10	2
20	8
30	19
40	34