

Uses

- To provide Timloc Hooded Slate Vents with a 110/125/150/170mm ventilation duct or soil vent pipe connection

Features and Benefits

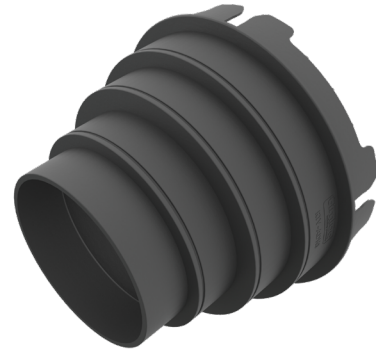
- Compatible with the Timloc Hooded Slate Vent RTV-HS
- Simply click into position to secure the adapter to the tile vent
- The joint between the adapter and the slate vent must be fully sealed with silicon sealant or a similar watertight adhesive.
- Provides a precise fit to 110/125/150/170mm ventilation duct or soil vent pipe
- Simply cut along the indented line at your chosen duct size No cutting is required for 110mm size.
- Where required the roof battens may need to be trimmed to allow the adapter to pass through the roof surface into the property

Relevant Standards

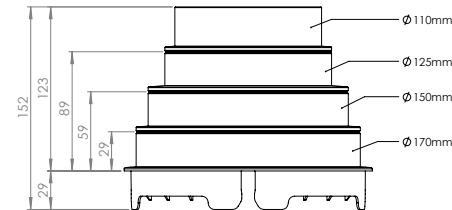
- BS 5250: 2021 Management of moisture in buildings – Code of practice
- Manufactured to BS EN ISO 9001:2015 and BS EN ISO 14001:2015
- Complies with all relevant Building Regulations 2010
- Satisfies all NHBC requirements

Material and Colour

- Injection moulded Polypropylene
- Available in Black only



Product Dimensions



Compatible Accessories

- Full datasheets available for all accessories

Description	Product Code	Product Image
Multi adapter (RTV-ADMULTI) to aid connection to 100/110/125/150mm duct sizes	RTV-ADMULTI	
110mm Flexi-Pipe to aid connection to ventilation duct or soil vent pipe	RTV-KIT1	

Environmental Product Declaration

A quantification of environmental information regarding the life cycle of the Hooded Slate Vent Adapter. GWP total is for production stages A1-A3. Verified in accordance with ISO 14025. View the full EPD at timloc.co.uk.

EPD Reference	EPD Mass (KG)	GWP A1-A3 (KG CO2e)
EPD HUB, HUB-1836	0.21	5.25E-03

Product Codes

Description	Colour	Weight	Qty	Product Code
Hooded Slate Vent Adapter	Black	0.22kg	10	RTV-ADHS