

RAD-SEAL

by timloc

Recessed radiator pipe guide and seal to eliminate potential air leakage and heat loss at vulnerable through-wall radiator pipework entry points. For 10mm pipework.

Use

- At the point of entry of through wall 10mm plastic radiator pipework
- Within all wall constructions that present a concealed pipe void including studded dry lined walls and plaster dab solid walls

Features and Benefits

- Contributes to Part L's required air leakage performance
- Air permeability measured and verified by BRE at Part L's 50Pa as:
 - 0.24m3 (h.m2) under positive pressure test conditions
 - 0.30m3 (h.m2) under negative pressure test conditions
- Centrally and neatly contains the pipework during the plastering process
- Protects the pipework and plaster from direct chafing
- Replaces requirement of electrical back boxes, intumescent foams or sealants
- Straight forward and quick face fix installation
- Projects by just 5mm from the wall
- Securely positions the pipework into the required direction for connection
- Eliminates pipework kinking

Quality

- Manufactured to BS EN ISO 9001 and BS EN ISO 14001
- Helping to meet Building Regulation:
 - Document Part L – Conservation of Fuel and Power

Material and Colour Choice

- Main unit body – white Polypropylene
- Gasket seal entry and seals – light grey Thermoplastic Elastomer

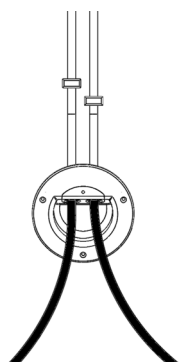
Installation Advice

- Please refer to timloc.co.uk for full recommended installation guidance

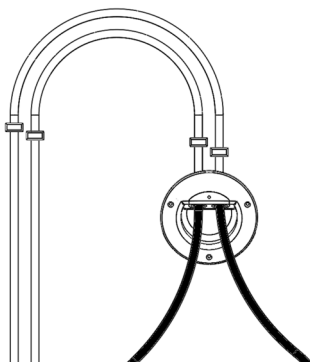
Technical Considerations

Accepts routed pipework from:

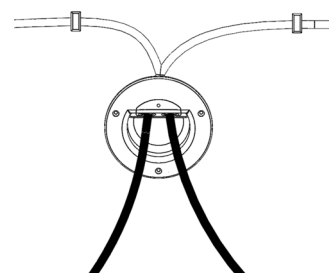
A. Ground floor routing



B. Horizontal routing



C. Upper floor routing



Product Code

Description	Diameter	Box Quantity	Product Code
Rad-Seal Recessed	140mm	10	1115