

Thin Leading Edge Dry Verge

A robust, attractive and weather resistant verge system alternative to wet mortar bedding for Thin Leading Edge tiles

Use

- Developed for Thin Leading Edge roof tiles
- Suitable for most pitched roof types from 15-55°
- Verges with or without bargeboards
- New build and refurbishment projects

Features and Benefits

- Long lasting, reliable, and virtually maintenance free.
- Protects against wind uplift, water ingress & general deterioration.
- Easy, fast, clean and generally safer mortar free installation.
- Allows virtually all-weather installation.
- Strong but supple for easy flexing and sliding along the tiles.
- Secure fit around the tile reassurance.
- Maintains consistently smart appearance.
- Not impacted by building settlement.
- Meets mechanical fix legislation requirements.
- The system also offers a unique steel fixing bracket option that presents flexible fixing points for use with alternative size counter battens or straight onto tile batten ends. The bracket avoids the reliance of end grain fixing, which can cause splitting and consequential damp penetration issues.

Quality

- Helping to meet BS 5534 Code of practice for slating and tiling
- Complies with all other relevant regulations and standards
- Manufactured to BS EN ISO 9001 and BS EN ISO 14001
- Independently tested and complies with BS8612

Material and Colour Choice

- UV protected and colour fast polypropylene
- Galvanised steel batten end bracket (optional)
- Available in grey, terracotta, brown and black

Installation Advice

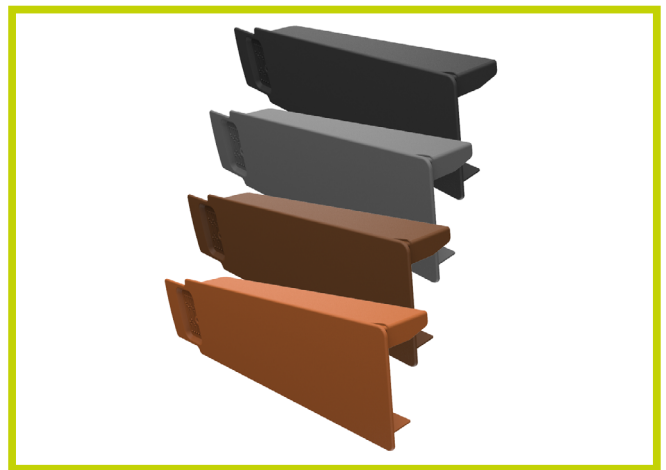
Please refer to timloc.co.uk for full recommended installation guidance

Products in the System

- Thin Leading Edge Verge (LH)
- Thin Leading Edge Verge (RH)
- Thin Leading Edge Eaves Starter (LH)
- Thin Leading Edge Eaves Starter (RH)
- Half Round Ridge (apex) End Cap
- Angled Ridge (apex) End Cap
- End Grain Batten Bracket (optional)

How to Order

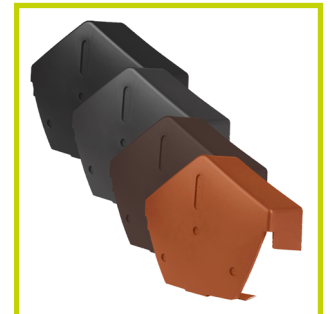
- Select the relevant verge system colour for the project.
- 1 verge piece is required for each roof tile in the sloping run.
- Select the ridge shape for the apex of the system – angled or round.
- Eaves starter must be installed at the beginning of each sloping run.
- 1 optional end grain batten bracket is required for each verge piece installed in the sloping run.



Thin Leading Edge Tile Dry Verge Piece (LH)



Universal Dry Fix Half Round Ridge End Cap



Universal Dry Fix Angled Ridge End Cap



Thin Leading Edge Eaves Starter (LH)



Thin Leading Edge Eaves Starter (RH)

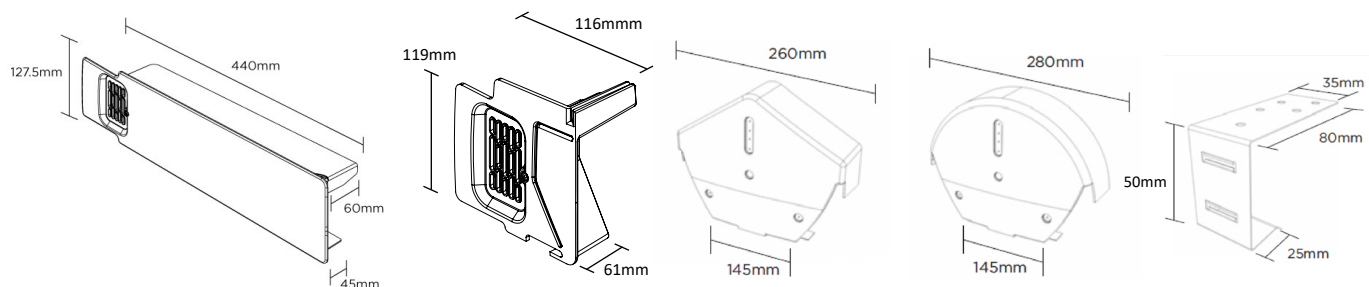


End Grain Batten Bracket

Thin Leading Edge Dry Verge

A robust, attractive and weather resistant verge system alternative to wet mortar bedding for Thin Leading Edge tiles

Product Dimensions



Thin Leading Edge
Tile Verge (LH)

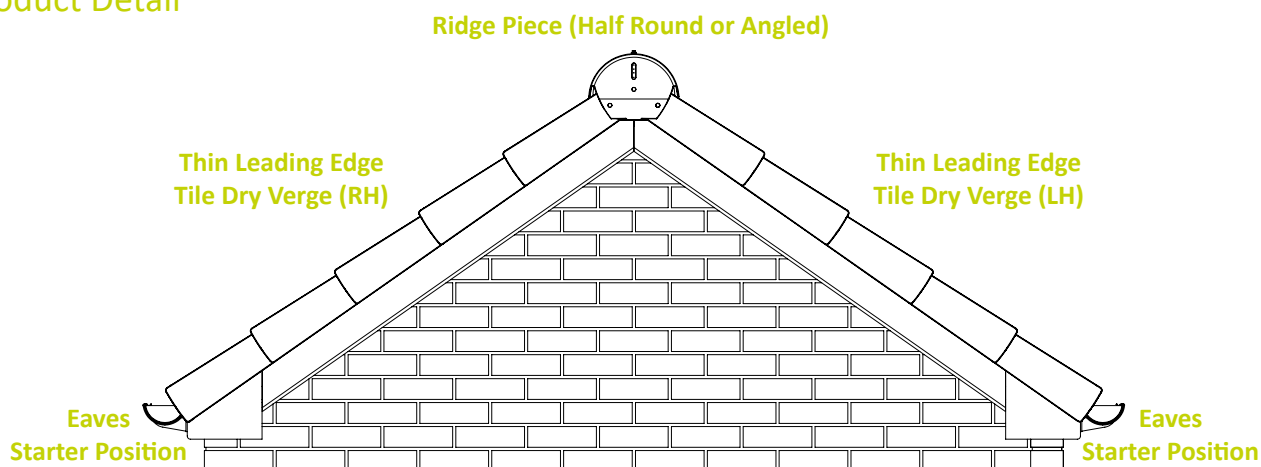
Thin Leading Edge
Eaves Starter (LH)

Universal Dry Fix Angled
Ridge End Cap

Universal Dry Fix Half
Round Ridge End Cap

End Grain
Batten Bracket

Product Detail



Product Codes

Description	Pack Qty	Black Product Codes	Grey Product Codes	Terracotta Product Codes	Brown Product Codes
Thin Leading Edge Verge (LH)	20	99157	99158	99159	99160
Thin Leading Edge Verge (RH)	20	99161	99162	99163	99164
Thin Leading Edge Verge Starter (LH)	10	99165	99166	99167	99168
Thin Leading Edge Verge Starter (RH)	10	99169	99170	99171	99172
Universal Dry Fix Angled Ridge End Cap	10	99107	99109	99110	99108
Universal Dry Fix Half Round Ridge End Cap	10	99136	99113	99114	99112
Dry Verge Profiled Tile End Grain Batten Bracket (optional)	20	99124	99124	99124	99124