

TTFRSTOP

TIMBER-TO-TIMBER

60-Minute Fire-Rated Cavity Stop Sock For Timber-Timber Construction

Use

- To restrict the spread of smoke and flames within external timber-timber cavity walls
- To provide a cavity barrier at separating walls, separating floors and around window or door apertures
- To minimise heat loss and the effect of flanking noise pollution through the cavity wall

Features and Benefits

- TTFRSTOP cavity stop socks comprise a length of non-combustible mineral wool insulation sleeved in a polythene outer layer for on-site weather protection
- 60-minute fire integrity and insulation performance
- Available to suit cavity widths from 50mm up to 150mm

Quality

- Complies with Building regulations Approved Document B and Robust Detail part E
- Independently tested by Warringtonfire in accordance with EN1366-4 principles
- Satisfies NHBC technical requirements
- Manufactured using mineral wool insulation classified as Euroclass A1 for fire according to BS EN 13501-1
- Mineral Wool Insulation is compliant with BS EN 13162 Thermal insulation products for buildings, ISO 50001 Energy Management Systems, ISO 14001 Environmental Management Systems and ISO 9001 Quality Management Systems
- The product contains no CFCs, HCFCs, or other ozone-depleting substances

Material and Colour

- The thermal conductivity of the Mineral wool insulation is 0.037 W/mK
- Supplied in 1200mm lengths
- For individual product colours refer to the product code table

Bill of Quantity

Uniclass: Pr_25_80_81_51 Mineral wool fire-stopping

CAWS: P12/360 Mineral wool rigid batts | P12/40 Mineral wool rigid batts

- Manufacturer: Timloc Building Products, Timloc House, Ozone Park, Howden, East Yorks. DN14 7SD. T: 01405 765 567 W: www.timloc.co.uk
- Reference: TTFRSTOP
- Types(s) and location(s): Thermal and acoustic fire stops to be installed vertically and horizontally as work proceeds. Position at separating walls, separating floors and around window or door apertures. Supplied in 1200mm lengths and butt jointed.
- Colour: Yellow

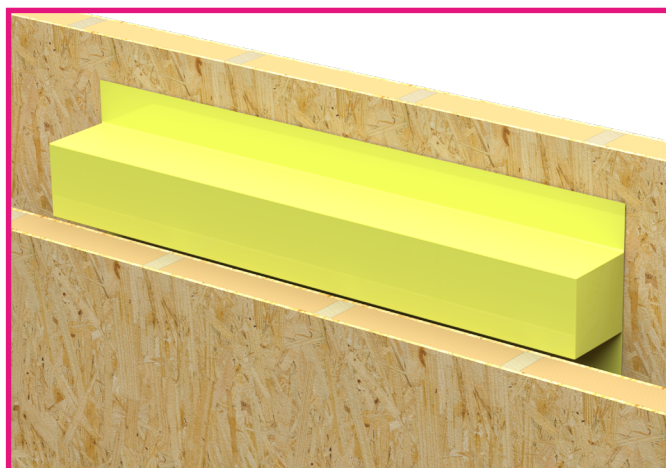
Product Codes

Product Code	To Suit Cavity Width	Dimensions	Minimum Compression	Bag Colour	Pallet Qty	Lead Time
TTFRSTOP50	50mm	85 x 150 x 1200mm	35mm	Yellow	90	3-5 working days
TTFRSTOP65	51-65mm	100 x 150 x 1200mm	35mm	Yellow	102	3-5 working days
TTFRSTOP75	66-75mm	110 x 150 x 1200mm	35mm	Yellow	90	3-5 working days
TTFRSTOP85	76-85mm	120 x 150 x 1200mm	35mm	Yellow	84	3-5 working days
TTFRSTOP90	86-90mm	120 x 150 x 1200mm	30mm	Yellow	84	3-5 working days
TTFRSTOP100	91-100mm	130 x 150 x 1200mm	30mm	Yellow	78	3-5 working days
TTFRSTOP115	101-115mm	150 x 150 x 1200mm	35mm	Yellow	66	3-5 working days
TTFRSTOP125	116-125mm	160 x 150 x 1200mm	35mm	Yellow	60	3-5 working days
TTFRSTOP130	126-130mm	160 x 150 x 1200mm	30mm	Yellow	60	3-5 working days
TTFRSTOP140	131-140mm	175 x 150 x 1200mm	35mm	Yellow	54	3-5 working days
TTFRSTOP150	141-150mm	185 x 150 x 1200mm	35mm	Yellow	54	3-5 working days

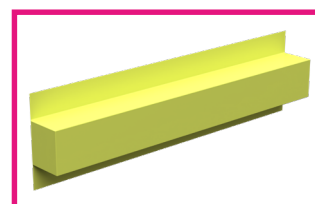
*Pallet quantities may vary slightly from the values stated above. Contact Timloc Sales for confirmation.



TTFRSTOP Vertical Installation



TTFRSTOP Horizontal Installation



TTFRSTOP50-150

How to Order

- TTFRSTOP available in pallet quantities only

To calculate required quantities:

- Divide the overall length of the cavity wall run (measured in mm) by 1200mm
- Allow one additional length for each corner for trimming
- Determine and specify the cavity width that the product needs to fit into