

## Interlocking Plain Tile Dry Verge

A robust, attractive and weather resistant verge system alternative to wet mortar bedding for Interlocking Plain tiles.

### Use

- Developed for Plain Interlocking concrete tiles
- Suitable for most pitched roof types from 15-55°
- Verges with or without bargeboards
- New build and refurbishment projects

### Features and Benefits

- Universal installation – LH & RH sides are interchangeable.
- Long lasting, reliable, and virtually maintenance free.
- Protects against wind uplift, water ingress & general deterioration.
- Easy, fast, clean and generally safer mortar free installation.
- Allows virtually all-weather installation.
- Strong but supple for easy flexing and sliding along the tiles.
- Secure fit around the tile reassurance.
- Maintains consistently smart appearance.
- Not impacted by building settlement.
- Meets mechanical fix legislation requirements.
- The system also offers a unique steel fixing bracket option that presents flexible fixing points for use with alternative size counter battens or straight onto tile batten ends. The bracket avoids the reliance of end grain fixing, which can cause splitting and consequential damp penetration issues.



Interlocking Plain Tile Dry Verge Piece

### Quality

- Helping to meet BS 5534 Code of practice for slating and tiling
- Complies with all other relevant regulations and standards
- Manufactured to BS EN ISO 9001 and BS EN ISO 14001
- Independently tested and complies with BS8612

### Material and Colour Choice

- UV protected and colour fast polypropylene
- Galvanised steel batten end bracket (optional)
- Available in grey, terracotta, brown, red and black

### Installation Advice

Please refer to [www.timloc.co.uk](http://www.timloc.co.uk) for full recommended installation guidance.

### Products in the System

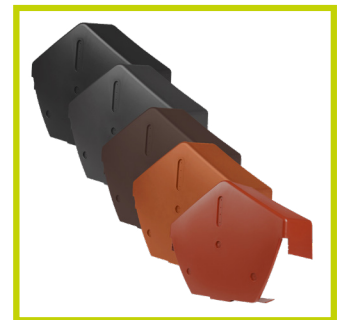
- Interlocking Plain Tile Verge
- Interlocking Plain Tile Verge starter
- Half round ridge (apex) end cap
- Angled ridge (apex) end cap
- End grain batten bracket (optional)

### How to Order

- Select the relevant verge system colour for the project.
- 1 verge piece is required for each roof tile in the sloping run.
- Select the ridge shape for the apex of the system – angled or round.
- Eaves starter must be installed at the beginning of each sloping run.
- 1 optional end grain batten bracket is required for each verge piece installed in the sloping run.



Universal Dry Fix Half Round Ridge End Cap



Universal Dry Fix Angled Ridge End Cap



Interlocking Plain Eaves Starter

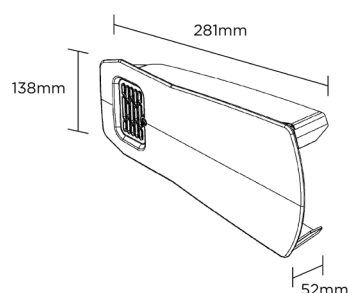


End Grain Batten Bracket

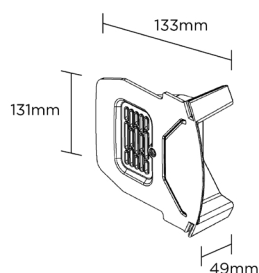
## Interlocking Plain Dry Verge

A robust, attractive and weather resistant verge system alternative to wet mortar bedding for Interlocking Plain tiles.

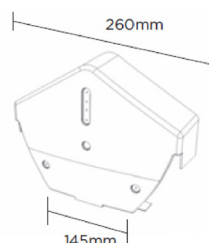
### Product Dimensions



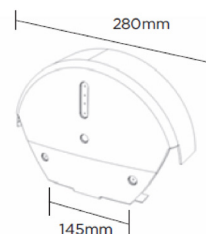
Interlocking  
Plain Tile Verge



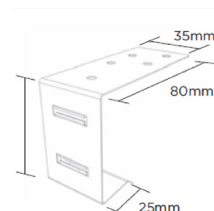
Interlocking  
Plain Eaves Starter



Universal Dry Fix Angled  
Ridge End Cap

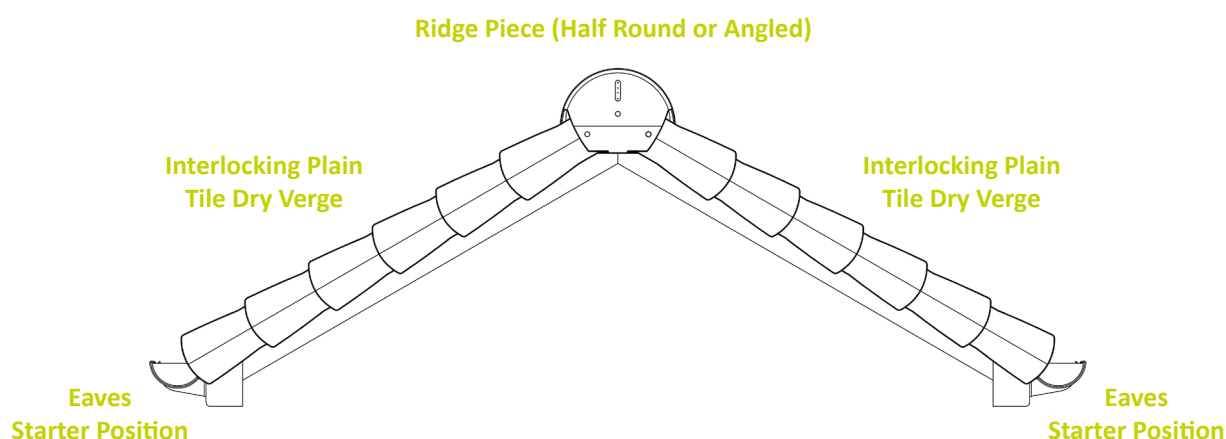


Universal Dry Fix Half  
Round Ridge End Cap



End Grain  
Batten Bracket

### Product Detail



### Product Codes

Description	Pack Qty	Black Product Codes	Grey Product Codes	Terracotta Product Codes	Brown Product Codes	Red Product Codes
Interlocking Plain Tile Dry Fix Verge	40	99173	99174	99175	99176	99182
Interlocking Plain Tile Verge Starter	10	99177	99178	99179	99180	99181
Universal Dry Fix Angled Ridge End Cap	10	99107	99109	99110	99108	99183
Universal Dry Fix Half Round Ridge End Cap	10	99136	99113	99114	99112	99184
Dry Verge Profiled Tile End Grain Batten Bracket (optional)	20	99124	99124	99124	99124	99124