

PWTIMFRSTOP

60-Minute Fire-Rated Party Wall Cavity Stop Sock Timber-Masonry

Use

- To restrict the spread of smoke and flames within masonry cavity walls
- To provide a cavity barrier at party wall junctions
- To minimise heat loss and the effect of flanking noise pollution through the cavity wall

Features and Benefits

- PWTIMFRSTOP cavity stop socks comprise a length of non-combustible mineral wool insulation sleeved in a polythene outer layer for on-site weather protection
- 60-minute fire integrity and insulation performance
- Sized to cover a maximum party wall
- Available to suit cavity widths from 50mm up to 150mm

Quality

- Complies with Building regulations Approved Document B and Robust Detail part E
- Independently tested by Warringtonfire in accordance with EN1366-4 principles
- Satisfies NHBC technical requirements
- Manufactured using mineral wool insulation classified as Euroclass A1 for fire according to BS EN 13501-1
- Mineral Wool Insulation is compliant with BS EN 13162 Thermal insulation products for buildings, ISO 50001 Energy Management Systems, ISO 14001 Environmental Management Systems and ISO 9001 Quality Management Systems
- The product contains no CFCs,HCFCs or other ozone-depleting substances

Material and Colour

- The thermal conductivity of the Mineral wool insulation is 0.037 W/mK
- Supplied in 1200mm lengths
- For individual product colours refer to the product code table

How to Order

- PWTIMFRSTOP available in pallet quantities only

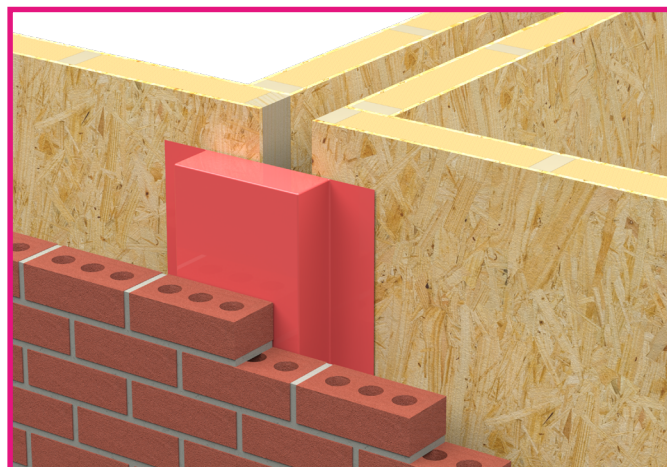
To calculate required quantities:

- Divide the overall length of the cavity wall run (measured in mm) by 1200mm
- Allow one additional length for each corner for trimming
- Determine and specify the cavity width that the product needs to fit into

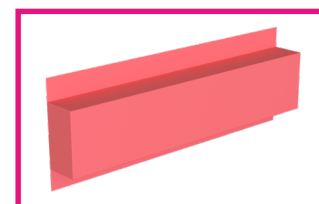
Product Codes

Product Code	To Suit Cavity Width	Dimensions	Minimum Compression	Bag Colour	Pallet Quantity	Lead Time
PWTIMFRSTOP50	50mm	65 x 250 x 1200mm	15mm	Red	80	3-5 working days
PWTIMFRSTOP65	51-65mm	85 x 250 x 1200mm	20mm	Red	60	3-5 working days
PWTIMFRSTOP75	66-75mm	85 x 250 x 1200mm	10mm	Red	60	3-5 working days
PWTIMFRSTOP85	76-85mm	100 x 250 x 1200mm	15mm	Red	68	3-5 working days
PWTIMFRSTOP90	86-90mm	100 x 250 x 1200mm	10mm	Red	68	3-5 working days
PWTIMFRSTOP100	91-100mm	110 x 250 x 1200mm	10mm	Red	60	3-5 working days
PWTIMFRSTOP115	101-115mm	130 x 250 x 1200mm	15mm	Red	52	3-5 working days
PWTIMFRSTOP125	116-125mm	140 x 250 x 1200mm	15mm	Red	48	3-5 working days
PWTIMFRSTOP130	126-130mm	140 x 250 x 1200mm	10mm	Red	48	3-5 working days
PWTIMFRSTOP140	131-140mm	150 x 250 x 1200mm	10mm	Red	44	3-5 working days
PWTIMFRSTOP150	141-150mm	160 x 250 x 1200mm	10mm	Red	40	3-5 working days

*Pallet quantities may vary slightly from the values stated above. Contact Timloc Sales for confirmation.



PWTIMFRSTOP Vertical Installation



PWTIMFRSTOP50-150

Bill of Quantity

Uniclass: Pr_25_80_81_51 Mineral wool fire-stopping

CAWS: P12/360 Mineral wool rigid batts | P12/40 Mineral wool rigid batts

- Manufacturer: Timloc Building Products, Timloc House, Ozone Park, Howden, East Yorks. DN14 7SD. T: 01405 765 567 W: www.timloc.co.uk
- Reference: PWTIMFRSTOP
- Types(s) and location(s): Thermal and acoustic fire stops to be installed vertically and horizontally as work proceeds. Position at party wall to cavity wall junctions or at floor level. Supplied in 1200mm lengths and butt jointed.
- Colour: Red