

AATi ARCHITECTURAL PROJECTS.

DESIGN & MANUFACTURING MARKET
LEADERS OF TRADITIONAL, CONTEMPORARY
& BESPOKE CAST METAL WORK.

01376 346 278 | info@aati.co.uk



Specialists in Architectural Castings

EXPERIENCE, EXPERTISE, FLEXIBILITY
& PROFESSIONAL SERVICES.

01376 346 278 | info@aati.co.uk

CONTENTS.

INTRODUCTION

OUR EXPERTISE

PROJECTS

Façades

The Compton

Paul Smith

66 Shoe Lane

Zig Zag Building

40 Beak Street

Paddington Scrolls

Gates & Balustrades

Twickenham Rugby Club

Granary Square

Chelsea Barracks

Webb Yates – The Pump House

Landscaping

GreenBlue Urban

OUR SERVICES

Pattern Making

3D CAD Modelling

Casting Simulation

Rapid Proto-typing

CNC Machining

OUR COMPONENT COMPANIES

CONTACT US

Get in touch

INTRODUCTION.

AATi Limited is part of the FSE Group of companies manufacturing and supplying Cast Metal Products for the engineering and construction sectors.

Our Essex-based facility encompasses our own foundry making us vertically integrated and in control of supply chain, quality & production.

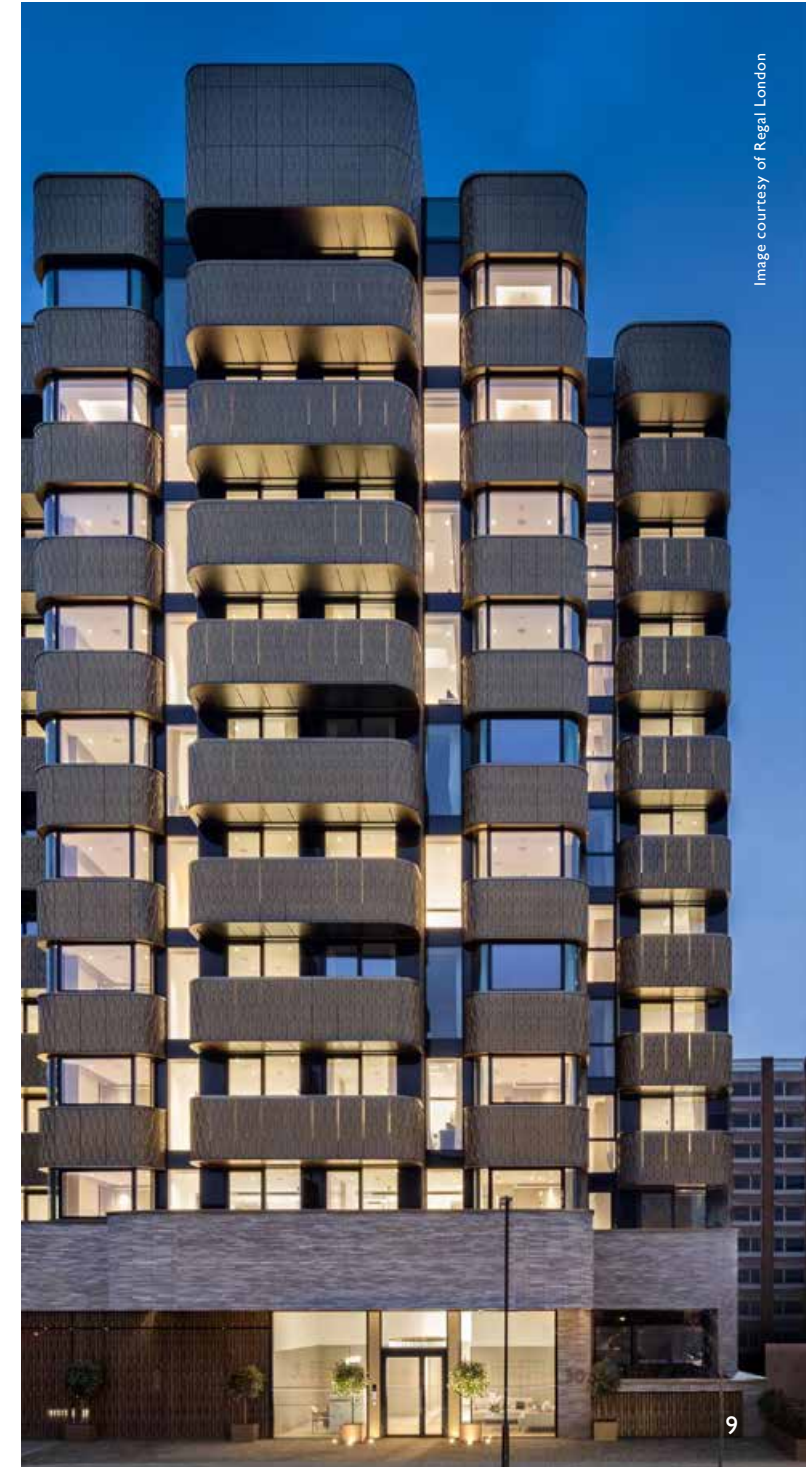


Image courtesy of Regal London

OUR EXPERTISE.

AATi Limited undertakes a variety of cast metal architectural projects as illustrated in this brochure and the breadth of expertise available here is as follows:

- 100% Internal Quality Assurance Testing (Dimensional, Metallurgical and Mechanical)
- ISO 9001 Quality System
- Architect/Client/Contractor/Designer Liaison Management
- Professionally Project Managed
- Experienced & Qualified Engineers
- Casting Simulation
- Production Flexibility
- 3D Modelling & Rapid Proto-typing
- Design Responsibility

THE COMPTON.



01376 346 278 | info@aati.co.uk



THE COMPTON.

ST JOHN'S WOOD

Client Regal London | Architect Simon Bowden | Completion Date 2019

Project Overview

Project Overview AATi supplied over 1800 cast Aluminium façade panels for this fantastic development in the heart of St Johns Wood. The cast Aluminium balustrades were produced and tested within the regulations for residential loading and soft/hard body impact. The cast Aluminium balustrades were self-supporting and secured to the concrete substrate. The above photo shows how it stands today - a cast façade and balustrade. Note also the finish that was achieved – a 25yr warranty PPC finish.



PAUL SMITH.

ALBERMARLE STREET, MAYFAIR

Client Paul Smith | Architect 6A | Completion Date 2013

Project Overview

Located on Albemarle Street in Mayfair, this beautifully crafted shop front for Paul Smith resonates a similar traditional-material presence that has thankfully been adopted throughout much of historic London. Artificially aged, Cast Ductile Iron was selected to satisfy the desired architectural appearance and strength.

The complex challenge posed was to create a seamless cladding design in keeping with the 18th Century Grade I status, also allowing for physical restrictions, curves and uneven surfaces across the entire building. FSE Foundry – the in-house Group casting facility to AATi - worked closely with Architects 6A to develop the unique and bespoke, cast façade.

Overall 26 different types of patterns were produced to complete the design with railings, balustrades, wall panels and window reveals. Sir Paul visited the factory during the moulding and casting process, overseeing his typical artistic embellishments being carved into the sand moulds which now are discretely embossed onto some of the façade panels themselves.

PAUL SMITH.



66 SHOE LANE.

Client Endurance Lane | Architect Stiff & Trevillion | Completion Date 2020

Project Overview

Our now famous orange-rusted 'living' finish used on Paul Smith's Mayfair flagship store was selected as part of a bespoke cast facade feature on London's 66 Shoe Lane building. 207 ductile cast Iron panels were manufactured in total, with 26 individual panel types designed to wrap around 5 large columns creating a clever and seamless architectural feature. Our Essex-based facility can produce large flat castings on multiple production lines ensuring flexibility and 'Fast-track' delivery if required. For your next façade project think... AATi Limited, bespoke architectural façade castings.





ZIG ZAG BUILDING.

Client Land Securities | **Architect** Lynch Architects | **Completion Date** 2016

Project Overview

The Zig Zag Building is part of a project that also includes a residential block - Kings Gate - and a series of new urban spaces opening up pedestrian routes across Victoria Street. The building sets new ecological and economic standards for speculative office design, bringing to central London a remodelled, new civic area with outstanding sustainable and aesthetic characteristics.

For the main office reception Lynch Architects designed a full-height gunmetal bronze feature wall of 54 panels, suggesting a hanging bronze curtain, opening up to reveal a backlit signage panel. The wall is composed of scalloped interlocking panels, increasing in ripple size and height towards the floor; using just 3 standard repeating designs. The panels were computer modelled in 3D first to check curve alignment, and this was used to create the foundry patterns.

After casting in bronze, the panels were polished, patinated, selectively rubbed back and sealed to highlight the crest of each wave. LED spotlights concealed behind horizontal panel junctions emphasize the final effect. FSE Foundry (the on-site FSE Group casting facility) collaborated on the creation of a full-size mock-up to test the visual effect prior to manufacture of the panels.





01376 346 278 | info@aati.co.uk

40 BEAK STREET.

Client Landcap | Architect Stiff & Trevillion | Completion Date 2019

Project Overview

Designed by Stiff + Trevillion Architects and with Artist Lee Simmons, his five story Soho building welcomed Damien Hirst as one of the first occupants which acts as the artist's main London studio. A high level of craftsmanship and detail was designed into the façade surfaces and component connections. Cast Aluminium façade panels are certainly an eye-catching feature equal to the uniqueness of their famous tenant's artistic creations.



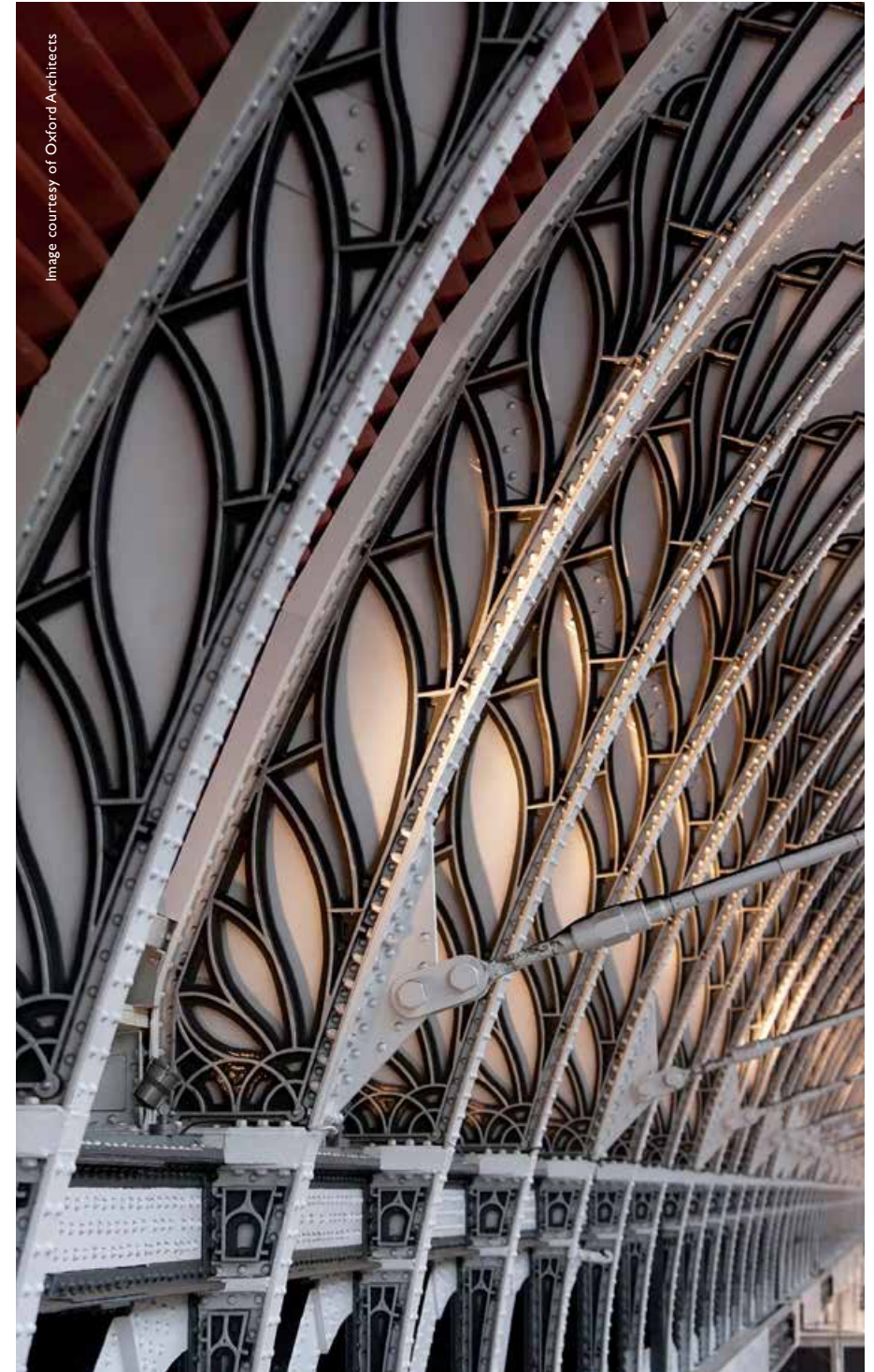


PADDINGTON SCROLLS.

Client Network Rail | Completion Date 2017

Project Overview

AATi were appointed to re-make and replace the damaged original Cast Iron architectural roof scrolls, designed in 1951 by Isambard Kingdom Brunel within the historic spans of Grade I listed Paddington Stations roof. This was a £20 million project from Network Rail to refurbish roof spans one to three at Paddington Station.



TWICKENHAM RUGBY CLUB.

Client Twickenham Rugby Club | Artist Harry Gray | Completion Date 2016

Project Overview

Designed and sculpted by Harry Gray, the cast and fabricated 'Rose and Poppy' Gates are dedicated to the memory of all rugby players who have served and died in conflicts around the world.

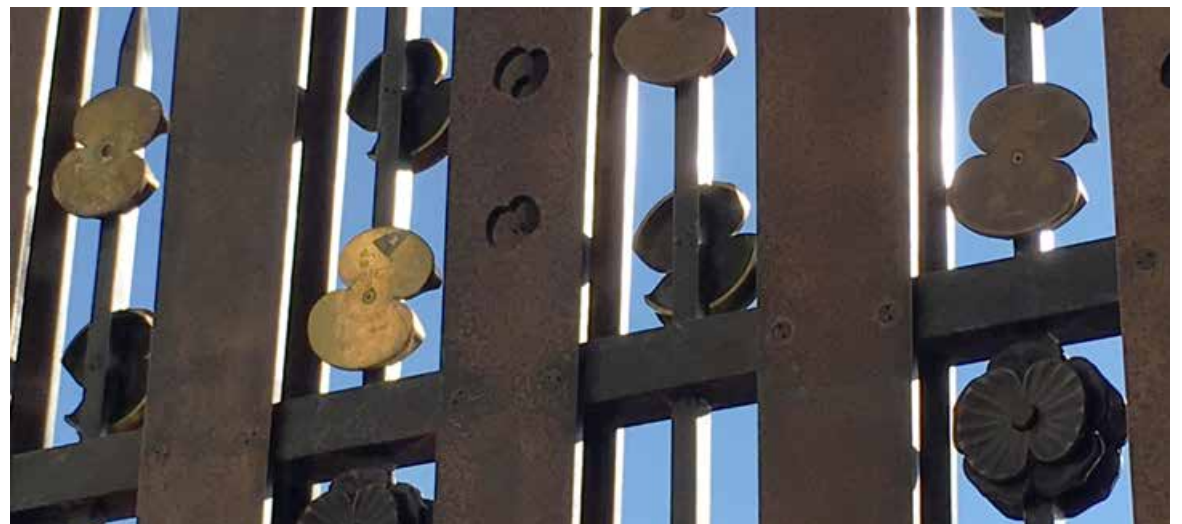
FSE pattern-makers used Harry's beautiful sculpted models to create patterns so that the bronze flowers could be cast in traditional sand moulds. The positioning on the gates tells a visual and emotional story both of tragedy and peace, being unveiled in April 2016 as part of the RFU's programme of events to commemorate the centenary of the First World War.

"The bronze gates exhibit roses, as worn on their shirts by generations of English rugby internationals, gradually transforming into poppies – the universal symbol of wartime commemoration. There are 15 roses on each gate, modelled on those worn by the Grand Slam-winning England team of 1914. The poppies at the top of each gate are formed from actual shell-casings fired in anger during the 1914-18 conflict."



01376 346 278

info@aati.co.uk

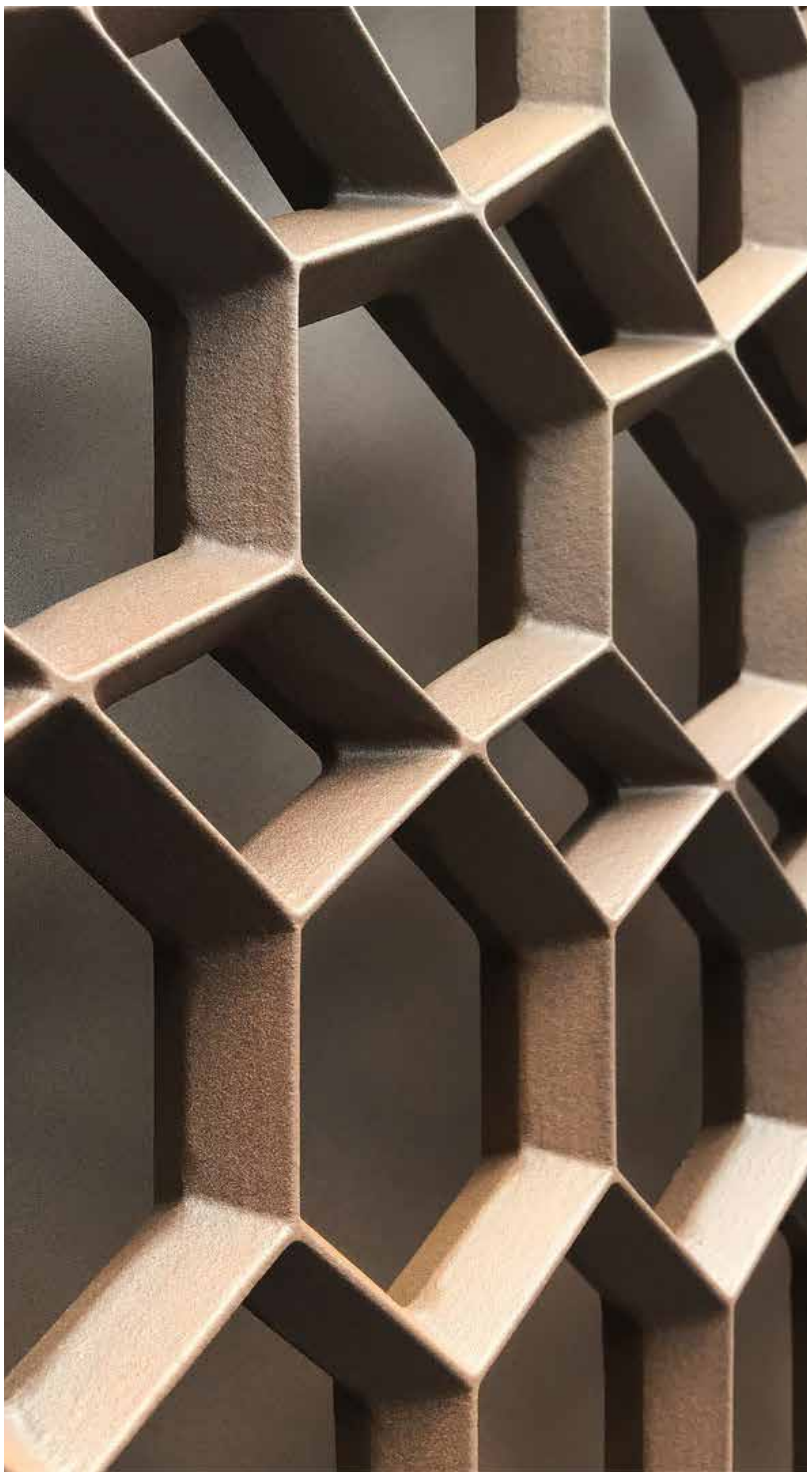




TWICKENHAM RUGBY CLUB.

SONS
+
DAUGHTERS

GRANARY SQUARE.



GRANARY SQUARE.

PAVILION H, KING'S CROSS

Client Argent | Architect Bell Phillips | Completion Date 2019

Project Overview

Utilising their expertise in large, flat Iron castings, FSE Foundry produced a series of cast panels and decorative balustrades just outside Coal Drops Yard, Kings Cross. The castings were 3D-modelled and casting-simulated in-house incorporating special connection joints and subtle shadow gaps. They were finished with a unique PPC coating giving a 'rust like' appearance in keeping with Kings Cross' historic urban environment. Ascend the stairs behind Pavilion H, and you will also see London's unmistakable anti-slip AATi stair nosings used throughout the Coal Drops Yard and, indeed, on every stairway in the total Kings Cross/St. Pancras Station complex... as you would expect!



WEBB YATES.

Client Private | Architect Fabric Space Architects | Completion Date 2017

Project Overview

Want to stand out from the crowd? Tired of being a sheep? Can't stand John from number 52 banging on about his new garden wall? Why not have a completely bespoke and one-of-a-kind home balustrade that your dinner guests won't stop talking about for years? Why not have it beautifully engineered by industry experts at affordable prices? The choice is yours. Be different. Choose AATi. Don't be like John.

GREENBLUE URBAN.

Client GreenBlue Urban | Completion Date 2019

Project Overview

Trees. They help us breathe, give us shade and are home to our urban wildlife. We would be much poorer without them. Tree grilles are often overlooked but play a vital part in the life of a tree and that of its earthly environment. A wide range of shapes, sizes and designs are available with interlocking security fixtures or special water gullys and drainage outlets.

GreenBlue Urban are the industry experts and with our in-depth casting and pedestrian surfaces knowledge we make a quietly impressive team. The metal we use is from recycled sources and our castings can themselves be recycled and reused for other cast metal components at the end of their useful lives.



CHELSEA BARRACKS.

Client Qatari Diar | Architect Eric Parry | Completion Date 2020

Project Overview

This phenomenal £3bn development in Belgravia comprises a mixture of apartments, luxury penthouses and town houses, stretching over 12 acres with traditional garden squares and public spaces. In addition, planning incorporates an unparalleled array of amenities including fine-dining restaurants, retail outlets, spa facilities and a sports centre.

AATi are proud to have been selected to expertly craft an ornate series of Juliet balconies and balustrades in two different materials - cast Aluminium and ductile cast Iron. Not only will the classical designs fit perfectly with other architectural styles in Belgravia, but the cast features are expected to become classic in their own right.

01376 346 278 | info@aati.co.uk





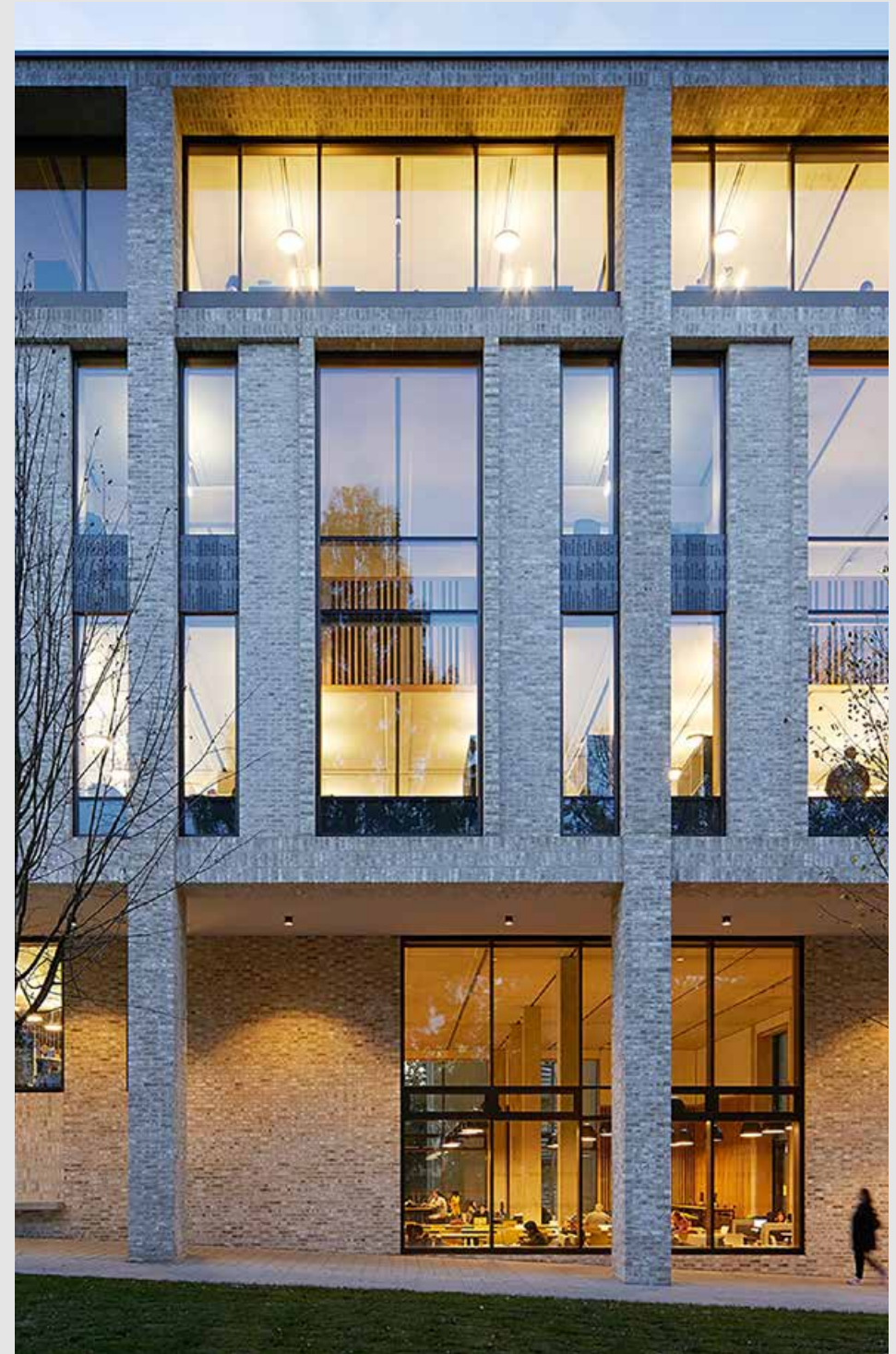
ROEHAMPTON UNIVERSITY.

Client Roehampton University | Architect FCB Studios | Completion Date 2017

Project Overview

Working closely with architects FCB Studios, a unique series of cast Iron façade panels are now installed across the exterior of the building. An initial product sampling range was required for this project and we were able to utilise our rapid proto-typing facilities, produce a variety of samples and then submit to the client for review within a meaningful time-scale. The chosen façade panel design, accommodating the exact client concepts and aesthetic features, now covers the building elevations.

The 7,840sqm Library opened in 2017, exhibiting over 1200 study areas, private research spaces and hundreds and thousands of books covering the five floors.



OUR SERVICES.

Casting

AATi is part of the FSE Group, possessing over 80 years of experience in ferrous and non-ferrous casting, not to mention intimate knowledge of many different industries and sector specialities in the UK and abroad. We provide a complete cast metal service, from CAD drawing interpretation, pattern design and production, to metallurgical recommendation, casting, heat treatment and finishing, all under one roof at our factory near Stansted Airport in the UK.

A wide spread of cast metals are available ranging from; cast Iron and Spheroidal Graphitic (ductile) Iron, through a range of castable Aluminium grades to the common Copper based alloys and the more unusual high-conductivity pure Copper and associated alloys.

Quality

AATi are ISO 9001 approved and have a Quality Management System (QMS) that is audited by a third party and professionally managed. We frequently set up and run project specific Inspection Test Plans (ITP's) as defined by the project and/or our clients, offering full 100% testing (dimensional, metallurgical, and mechanical) within our QMS.

Through our involvement in the rail industry, we understand what it takes to manufacture high quality products having endured rigorous product testing over the past 50 years. For this reason, we believe our unique expertise in casting project quality is unparalleled.

Production

We have the capability of producing 100 moulds per day, to melt up to 2.2Tn of Aluminium per day, 6Tn of Iron per day and 2Tn of Cooper based alloys. In our factory we have several production lines along with back up finishing facilities.

Pattern Making

On-site we have in-house pattern makers with a wealth of knowledge in Foundry processes and casting principles, adhering to high levels of accuracy and tolerance. Traditionally patterns were produced by hand using different timbers, but now more advanced technologies are being utilised. Today we mainly use resin equipment for our patterns (often using rapid prototyping) and working with CAD data we use CNC machinery to manufacture.

Rapid Proto-typing & 3D Modelling

AATi has the capabilities to use advanced technologies such as rapid proto-typing, through the use of in-house 3D CAD design. 3D printing designs can be produced, including the production of casting sand moulds as opposed to patterns. We have produced new products from concept design stage, right through to a completed casting and delivered to our clients within a few days.

Casting Simulation

Our skilled team of engineers work with casting simulation software to enable us to analyse critical casting properties and run a series of tests before any castings are produced. This ensures cost effective pricing and reduces waste energy, material, and saves on pattern tooling.

CNC Machining

We have invested in CNC equipment allowing us to machine precision components to highly accurate tolerances. Our services include all types of drilling and cutting.

Finishing

We have the equipment and personnel to go beyond the casting process and carry out further processes such as sand blasting, fettling, machining, coating and bracket assembly.



Image courtesy of Regal London

OUR COMPONENT COMPANIES.



AATi Limited
Cast metal products for
Architectural projects



AATi Rail Limited
Anti-slip surfaces for
Railway projects



AATi Commercial Limited
Anti-slip surfaces for
Architectural projects



FSE Foundry
Cast metal services
across Engineering &
Construction sectors.





AATi Ltd

11 Swinborne Drive
Springwood Industrial Estate
Braintree
Essex
CM7 2YP

Telephone: (+44) 01376 346278

Fax: (+44) 01376 348480

Email: info@aati.co.uk

www.aati.co.uk

Follow us:     