

NEW Antislip stair nosings
designed to fit over existing stairs

THE AATi COVERALL RANGE

Cast metal stair nosings for
overground & underground rail
terminals & stations from AATi the
mass-transit stair nosing experts

- Unsurpassed AATi design
- UK manufacture and site support
- Long lasting and durable
- Fail-safe
- DDA compliant
- LUL, TfL, Railtrack
- Minimises contractor costs and
site downtime



Specialists in pedestrian surfaces

THE COVERALL RANGE

Antislip stair nosing assemblies fit over existing stairs removing the need for costly and time-consuming stair finish removal and minimising contractor costs and station disruption

Comprising six variations with different materials and robust combination of AATi designed cast antislip nosing.

Range of products to suit all application circumstances for different footfall levels.

- Removes need for contractor to break-out and remove existing stair finishes
- Shortens time stairway is out of commission
- Fits over existing stair treads with minimal repair expense
- Can be fitted to new cement and steel structures
- Fast and uncomplicated installation procedure
- Several options for consecutive step joint detailing

How it works

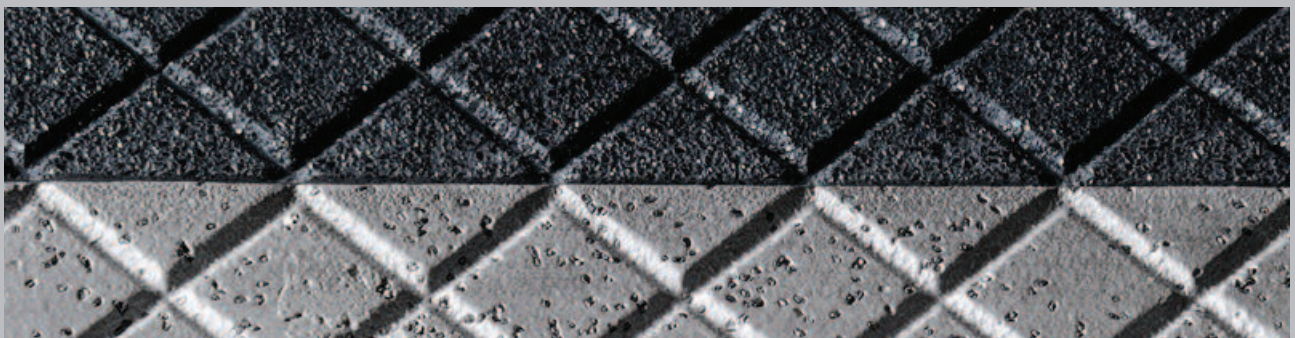
The Coverall assembly is fitted directly on top of the existing stair and screwed in place through the incumbent stair. The line of the existing stairway is raised by the thickness of the Coverall nosing, however this increase is 'lost' at the top and bottom of the stairway within the fall of the 800mm wide Corduroy surface (also available from AATi in a range of metallic and composite materials). Several consecutive step joint detailing options are available, including the integrally designed 1.5mm stainless steel plate that dovetails seamlessly between the cast nosing at both the top and the bottom of the stair riser.

As with all AATi products, the Coverall Range is manufactured in the UK using high-grade metals and encapsulated silicon carbide to provide robust antislip stair nosings that last for decades. Some of AATi stair nosings are still in use today, more than 25 years after installation.

The launch of the Coverall Range expands our highly-respected and comprehensive selection of high-grade stair nosings to meet the needs across the entire rail network, from high-footfall underground stairways, to low-footfall 'behind the scenes' emergency and access staircases.

For a complete range of AATi products refer to the main AATi brochure or www.aati.co.uk.

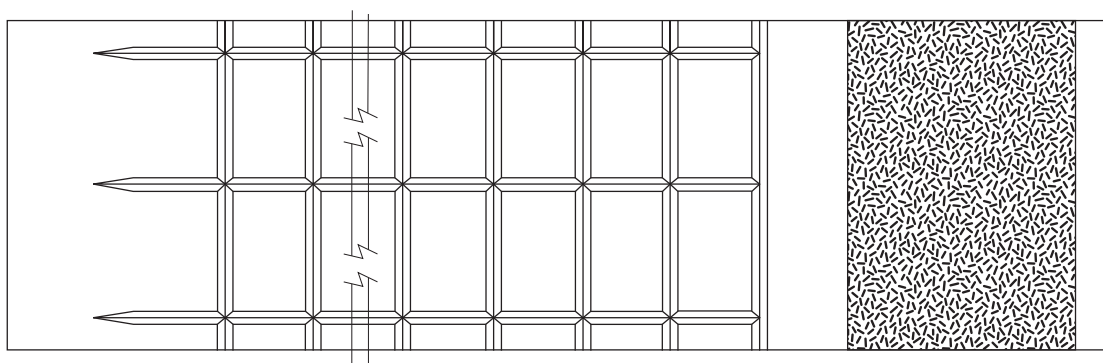
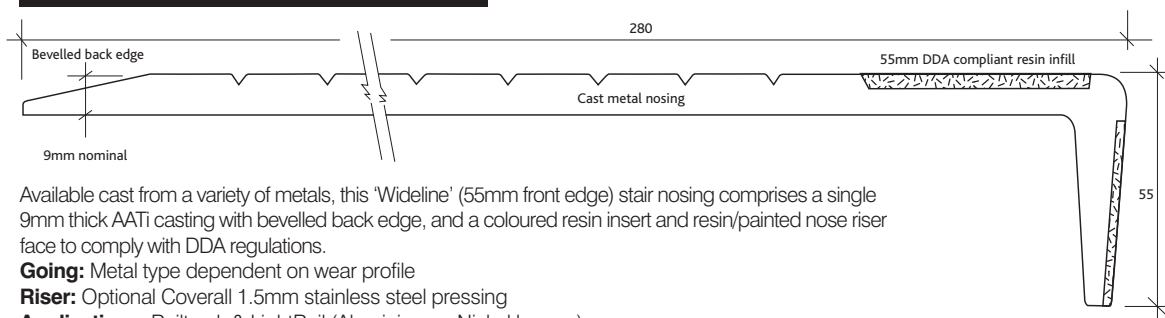
Silicon carbide encapsulated surfaces of antislip glass fibre and AATi HDLT® casting



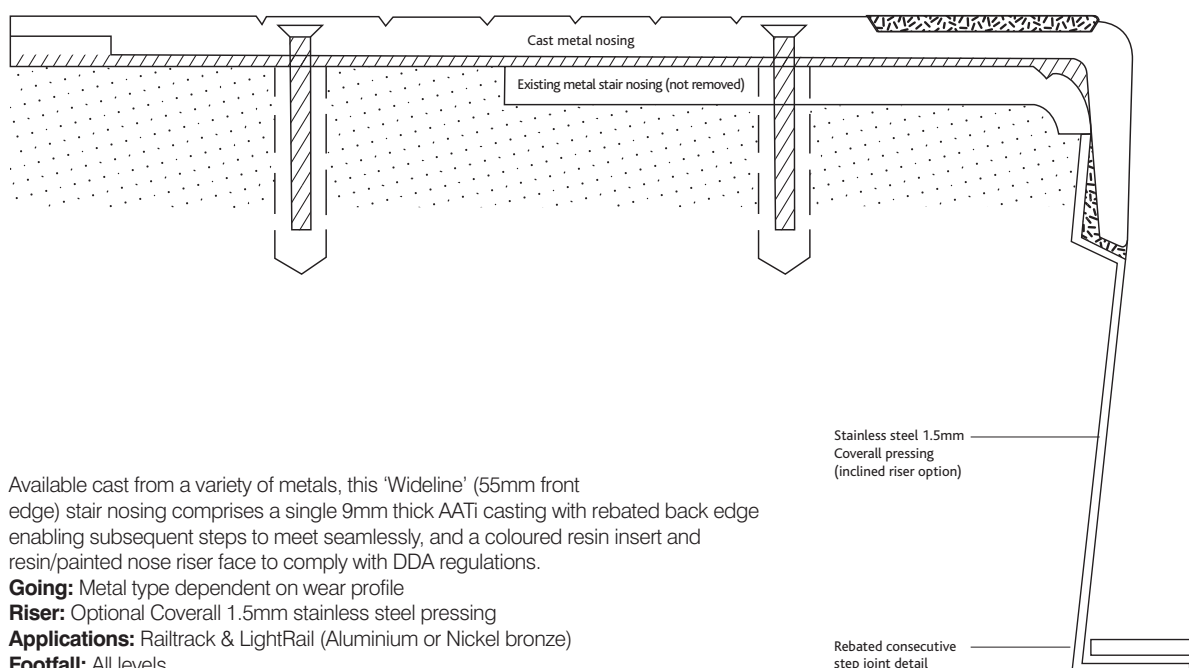
AATi Coverall Range developed from the standard SN93/SL3 Sightline and SN293/WL Wideline DDA compliant variants of the AATi 280mm wide stairway landing stair nosing.

The above products are essentially *Coverall* products, covering the complete step 'going' but fairly unsophisticated in their simplicity. The range of 6 new Coverall variants all exhibit different attributes designed to match particular applications and cost demands. All Coverall products, however, exhibit ALL of the design criteria demanded by the specifier for minimised contractor installation time and elimination of the need to remove or disturb existing steps before installation of new.

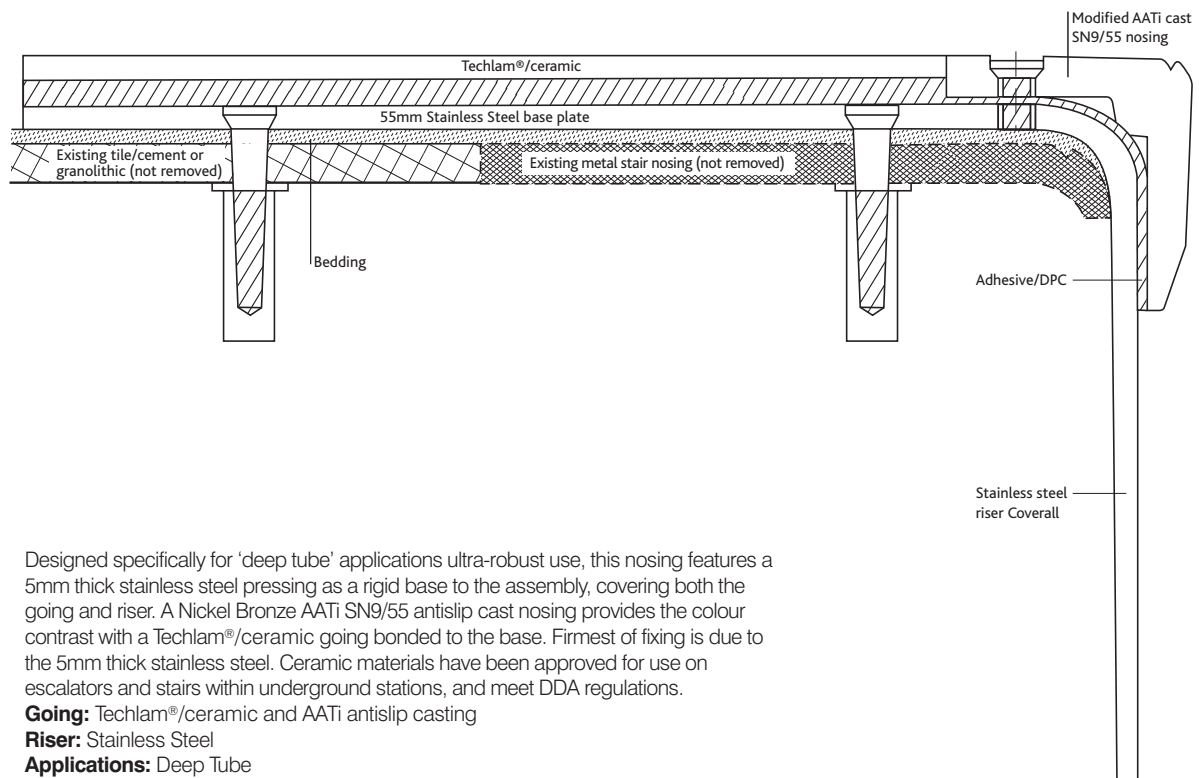
Mark 1, SN293/WL/280B (bevelled)



Mark 2, SN293/WL/280R (rebated)



Mark 3, SN9/55/TSH



Designed specifically for 'deep tube' applications ultra-robust use, this nosing features a 5mm thick stainless steel pressing as a rigid base to the assembly, covering both the going and riser. A Nickel Bronze AATi SN9/55 antislip cast nosing provides the colour contrast with a Techlam®/ceramic going bonded to the base. Firmest of fixing is due to the 5mm thick stainless steel. Ceramic materials have been approved for use on escalators and stairs within underground stations, and meet DDA regulations.

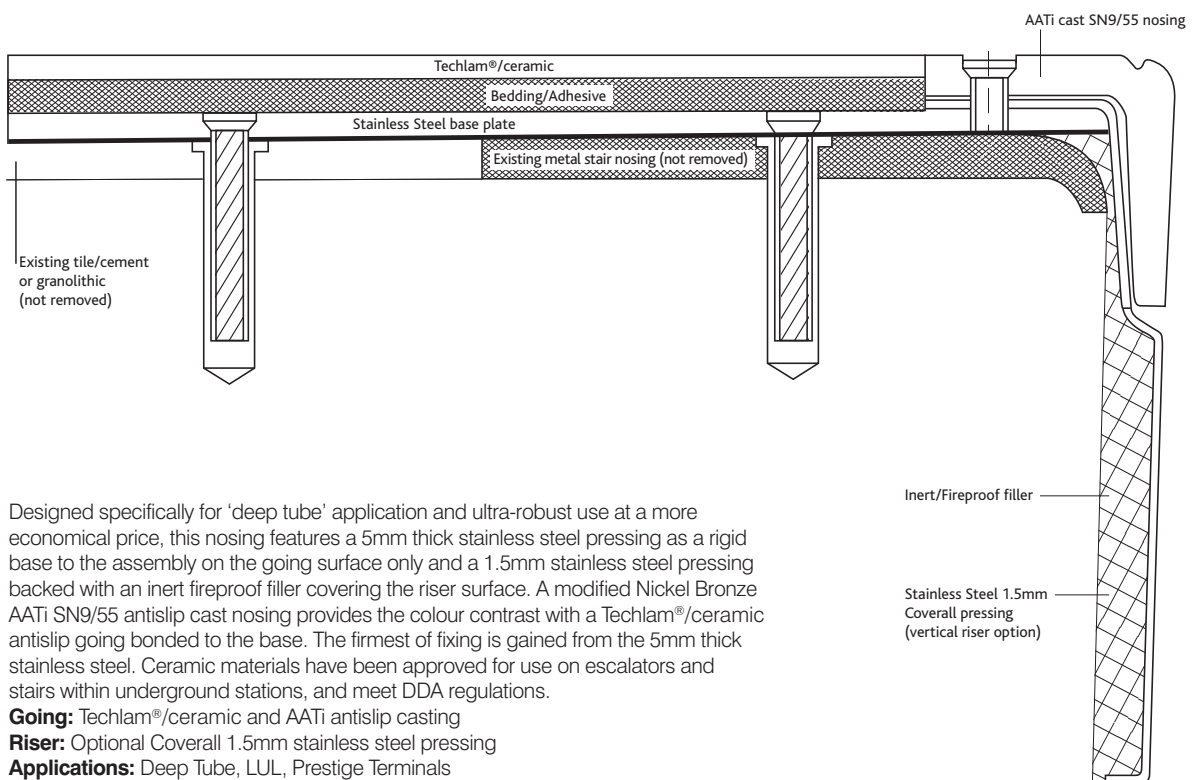
Going: Techlam®/ceramic and AATi antislip casting

Riser: Stainless Steel

Applications: Deep Tube

Footfall: Highest

Mark 4, SN9/55/TSM



Designed specifically for 'deep tube' application and ultra-robust use at a more economical price, this nosing features a 5mm thick stainless steel pressing as a rigid base to the assembly on the going surface only and a 1.5mm stainless steel pressing backed with an inert fireproof filler covering the riser surface. A modified Nickel Bronze AATi SN9/55 antislip cast nosing provides the colour contrast with a Techlam®/ceramic antislip going bonded to the base. The firmest of fixing is gained from the 5mm thick stainless steel. Ceramic materials have been approved for use on escalators and stairs within underground stations, and meet DDA regulations.

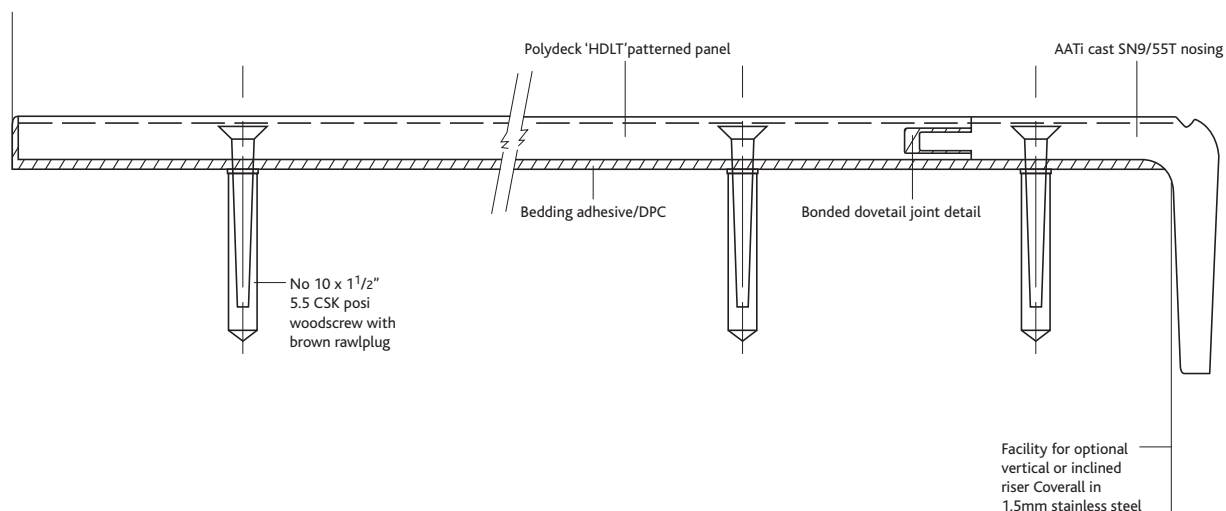
Going: Techlam®/ceramic and AATi antislip casting

Riser: Optional Coverall 1.5mm stainless steel pressing

Applications: Deep Tube, LUL, Prestige Terminals

Footfall: Highest

Mark 5, SN9/55P



A lighter duty design with antislip composite going and cast AATi SN9/55 stair nosing bonded to a Polydeck HDLT® pattern glass fibre reinforced antislip panel to cover stair going. Provides a hard-wearing antislip panel for medium to light footfall areas combined with a hard-wearing AATi nosing where a light aluminium extruded nosing bearing low antislip attributes is insufficiently robust.

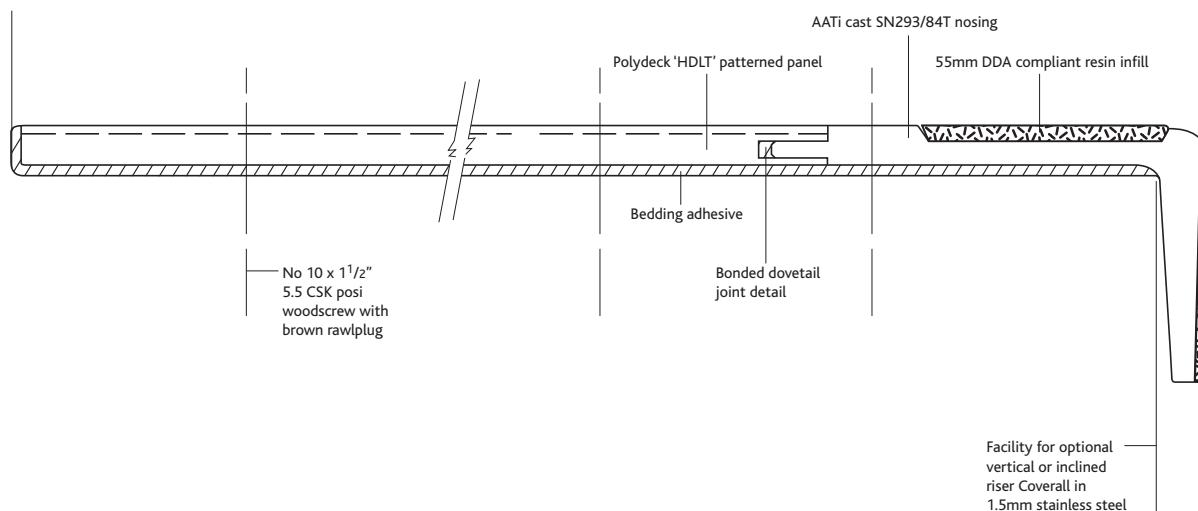
Going: Polydeck HDLT® and AATi Aluminium Antislip casting. Nickel bronze AATi casting as a higher wear resistant option

Risers: Optional Stainless Steel 1.5mm pressing

Applications: Railtrack, Light rail

Footfall: Medium to low

Mark 6, SN293/84T



A lighter duty design with a cast AATi SN293/WL 'Wideline' stair nosing bonded to a Polydeck HDLT® pattern glass fibre reinforced antislip panel to cover stair going giving improved mechanical fixturing when bonding alone is insufficient (eg unstable stair substraat). Provides a hard-wearing antislip panel for medium to light footfall areas combined with a hard-wearing AATi nosing where a light aluminium extruded nosing bearing low antislip attributes is insufficiently robust.

Going: Polydeck HDLT® and AATi Aluminium Antislip casting. Nickel bronze or gunmetal AATi casting as a higher wear resistant option

Risers: Optional Coverall 1.5mm stainless steel pressing

Applications: Railtrack, Light rail

Footfall: Medium to low

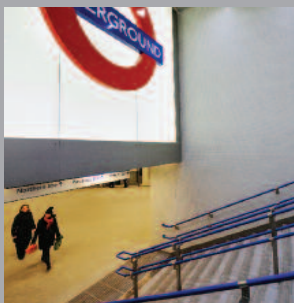
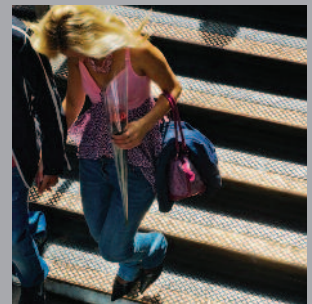
AATi

Antislip Antiwear Treads International Ltd (AATi) is the acknowledged leading UK manufacturer and supplier of high footfall, fixed-stair applications for many pedestrian environments. These include rail and underground stations, shopping malls, multi-storey car parks, and railway carriage and platform thresholds.

Top specification AATi encapsulated silicon carbide and cast metal composite antislip gratings, plates, insert bars and over 130 different stair nosing designs have a typical

life span of up to 20 years, whilst high-grade cast AATi antislip aluminium products provide an economic and effective alternative for low-footfall areas.

The highly skilled workforce at our Essex-based foundry, cast a wide range of antislip rail-based pedestrian surface products. Other products include bespoke and reproduction architectural and engineering castings, using cast and ductile irons, as well as copper and aluminium alloys.



A small sample of some of the other antislip stair nosings available from AATi, designed for new and replacement stairways throughout the London Underground and overground rail network.

T: +44 (0)1376 346278 or

T: +44 (0)1376 346666

E: info@aati.co.uk

www.aati.co.uk

© Copyright. All AATi® products and designs are registered and protected including the HDLT® pattern. Any infringements of designs will be considered commercially in contravention of AATi design and production rights unless specifically authorised under contract with the Company. Techlam® is a registered product of Levantina S.A.

AATi
Specialists in pedestrian surfaces