



Product Selector

Car Parks & Commercial

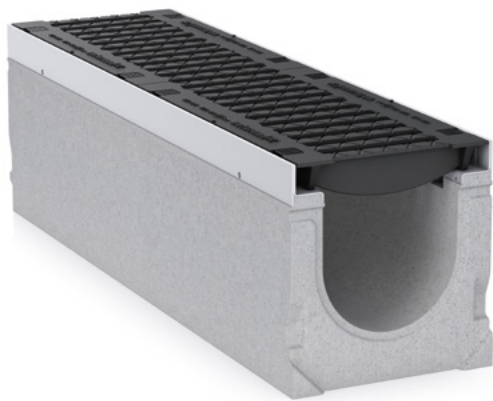
Linear drainage systems for environments that require durable performance for frequently trafficked areas.

World Leader

Reliable Performance

A world leader in the manufacture of modular surface drainage systems, HAURATON drainage products have been supplied onto major projects within international markets for over sixty-five years.

We developed our first linear drainage system in 1956. Since that time the HAURATON brand has become known around the world as a benchmark for quality, reliability, durability and service.



Environmentally Aware

HAURATON has environmentally sound production facilities, processes and procedures.

RECYFIX systems are manufactured from recycled Polypropylene (PP), which is 100% recyclable following life-time use.

HAURATON drainage systems can assist in the assignment of credits based on the BREEAM and LEED rating systems. HAURATON maintains an Environmental Management System according to DIN EN ISO 14001:2015

Refer to HAURATON for further information.



Surface Drainage

Product Range

HAURATON offers a wide range of external surface drainage systems suitable for a variety of project applications, including residential, commercial, municipal, industrial, military, transport and major infrastructure projects.

FASERFIX – Strong and durable drainage channels in Fibre-Reinforced Concrete (FRC).

RECYFIX – A robust, high-performance range in corrosion-resistant composite materials (PP, PA-GF). HAURATON is the innovator and market-leader in this field and provides the widest range of commercial-grade composite channel systems available.

SPORTFIX, DACHFIX, DRAINFIX CLEAN and **RECYFIX TRAM** are specialist ranges available for unique applications.

Systems can be supplied with a variety of functional, decorative and HeelSafe gratings or with discreet 'longitudinal' slot channel designs, for load-class applications from A 15kN up to F 900kN, offering significant choice and flexibility.

With superior design and engineering, HAURATON sets the industry standard with high-quality, visually aesthetic and technically innovative products that meet project requirements and complement modern building and landscape design.

Product Selectors

Our Product Selector's have been designed to provide industry professionals with a quick, simple and clear guide to choosing the appropriate HAURATON system to suit their project requirements.

Each Product Selector include's project applications with similar needs regarding loading and system performance:

- Roof Terraces, Balconies & Facades
- Public Realm & Shared Space
- Car Parks & Commercial
- Industrial
- Ultra-Heavy-Duty
- Airports
- Ports & Terminals



Car Parks & Commercial

Linear drainage systems for environments that require durable performance for frequently trafficked areas.

System Requirements

'Car Parks & Commercial' environments typically include the following characteristics:

- Medium to heavy-duty loads; C 250 - E 600 (wheel, static, impact and dynamic). Channels installed at the base of ramps subject to impact loads, so systems with heavier load ratings (D 400 & E 600) are generally selected for these areas.
- Medium to high traffic flow; varied traffic patterns (frequency, speed, acceleration, braking, turning, angled approach). Channel systems installed in car parks are generally subject to regular traffic and wheels turning/twisting on gratings, imposing dynamic forces.
- Varied wheel type and configuration (pneumatic, single, multi-tyre, occasional traffic by service vehicles with single-axle/double-axle).
- High surface water run-off (extensive catchment areas). Sheet flow may occur quickly down ramps (appropriate system gratings should be selected for efficient interception).
- Corrosive environments dependent on location.
- General surfaces (concrete, asphalt, block paving).
- Durable, practical and functional system design.

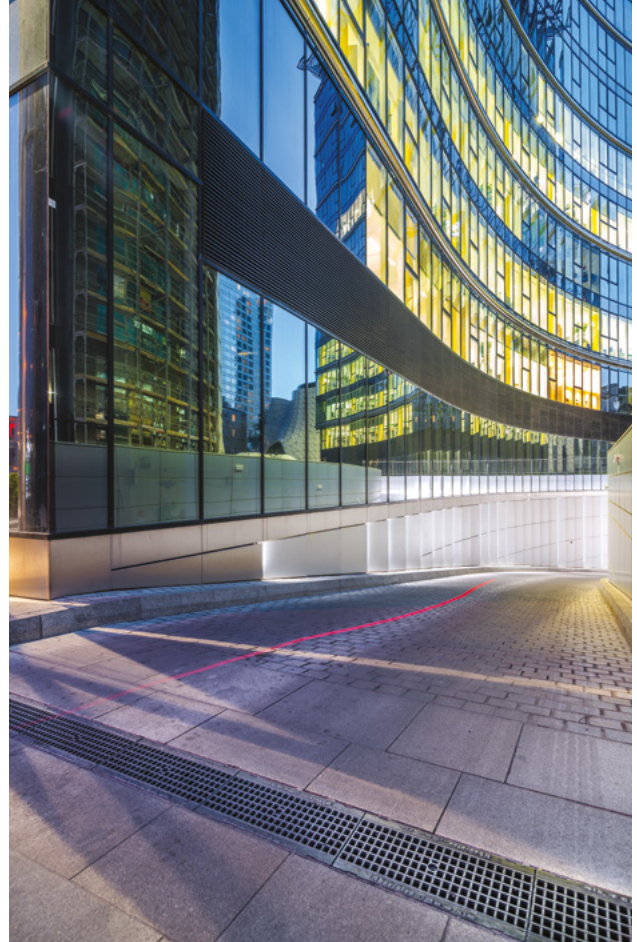
HAURATON systems included in this Product Selector meet and exceed the requirements for 'Car Parks & Commercial' project applications.

Typical Applications

Projects where 'Car Parks & Commercial' environments exist include:

- Entrances
- Retail Areas
- Office Blocks
- Supermarkets
- Public Car Parks
- Healthcare Facilities
- Park & Ride Schemes
- Multi-Level & Basement Parking

*HAURATON 'Car Parks & Commercial' systems are not suitable for use on highways in locations that are subjected to fast moving traffic.





RECYFIX PRO

A medium-duty system with practical design suitable for a variety of applications up to D 400 loading. When fitted with a composite grating, **RECYFIX PRO** is fully corrosion resistant, non-conductive and anti-static; reducing long-term maintenance costs and avoiding expensive earthing works.

RECYFIX PRO incorporates a discreet polypropylene edge-frame formed as part of the channel body structure, for improved rigidity and enhanced aesthetic appearance. The system is pre-assembled, lightweight and compact for quick and easy installation on site. Refer to product brochure for detailed information.

Key Features

Material

- Modified Polypropylene (PP) composite

Loading

- System load rated to D 400 (EN 1433: 2002)

Channel Widths

- 100, 150, 200 & 300 mm

Channel Lengths

- 1.0m & 500mm (selected depths)

Grating Options

- Inlay design
- Load options ranging from A 15 - D 400 (EN 1433: 2002)
- Variety of grating designs and material's available
- Refer to product brochure

Channel Configuration

- Constant-depth (same channel depth)
- Stepped-fall

Edge Detail

- Polypropylene edge-frame
- Integral part of channel body structure





RECYFIX PLUS

A medium-duty system selected for use when durability and aesthetics are important project requirements. **RECYFIX PLUS** incorporates a neat and discreet steel edge-rail that accommodates all surface finishes and complements contemporary features in modern buildings and landscape design. This design feature also provides improved rigidity and protection at the channel edge.

RECYFIX PLUS is fitted with a range of 'lay-on' gratings in a variety of materials, designs and loading options up to D 400. Refer to product brochure for detailed information.

Key Features

Material

- Modified Polypropylene (PP) composite

Loading

- System load rated to D 400 (EN 1433: 2002)

Channel Widths

- 100, 150, 200 & 300 mm

Channel Lengths

- 1.0m & 500mm (selected depths)

Grating Options

- Lay-on design
- Load options ranging from A 15 - D 400 (EN 1433: 2002)
- Variety of grating designs and material's available
- Refer to product brochure

Channel Configuration

- Constant-depth (same channel depth)
- Stepped-fall

Edge Detail

- Steel edge-rail fitted

Two options:

- Galvanised steel (DX51D+Z275-MA-C)
- Austenitic stainless steel (AISI Grade 304; EN CNS 1.4301)
- Neat, discreet, rigid and aesthetic





RECYFIX MONOTEC

Designed and installed as a single monolithic unit, **RECYFIX MONOTEC** is quick and easy to install and provides a stable, safe and secure surface environment for users. **RECYFIX MONOTEC** is lighter and has higher drainage capacity compared with alternative mineral-based systems (for equivalent channel sizes and installed dimensions).

Manufactured from reinforced Polypropylene (PP) composite, channel units are strong, durable and UV-stable, with high impact, chemical and corrosion resistance for low-cost maintenance during life-time use. Refer to product brochure for detailed information.

Key Features

Material

- Reinforced Polypropylene (PP) composite

Loading

- System load rated to D 400 (EN 1433: 2002)

Channel Widths

- 100 & 200 mm

Channel Lengths

- 1.0m

Grating Options

- Monolithic channel with integral grating
- D 400 (EN 1433: 2002)
- Slotted grating design (FIBRETEC style)
- Reinforced Polypropylene (PP) composite

Channel Configuration

- Constant-depth (same channel depth)
- Stepped-fall

Edge Detail

- Monolithic design; channel edge and grating combined

*Not suitable for E 600 and F 900 load applications subject to traffic by forklift trucks and HGV's.

*This system is especially resilient to dynamic forces caused by the turning/twisting action of wheels.





FASERFIX KS

Cast from fibre-reinforced concrete, **FASERFIX KS** is a strong and durable 'general-purpose' channel system designed for use in a variety of applications (usually C 250 - E 600).

FASERFIX KS has thicker sidewalls (30mm) compared with alternatives. A metal edge-frame (galvanised or stainless steel) cast deep within the channel body achieves a rigid and discreet edge-detail for extra strength and enhanced aesthetics. Gratings are fixed into position with a 10-point locking system (SIDELOCK plus central bolt and bar arrangement) for added safety, stability and security. Refer to product brochure for detailed information.

Key Features

Material

- Fibre-reinforced concrete

Loading

- Channel body load rated to F 900 (EN 1433: 2002)
- System typically installed in E 600 load environments
- Suitable for F 900 environments (light traffic only)
- Refer to FASERFIX SUPER for F 900 environments (heavily trafficked)

Channel Widths

- 100, 150, 200 & 300 mm

Channel Lengths

- 1.0m & 500 mm (selected depths)

Grating Options

- Inlay design
- Load options ranging from A 15 - F 900 (EN 1433: 2002)
- Variety of grating designs and material's available (over 20)
- Refer to product brochure

Channel Configuration

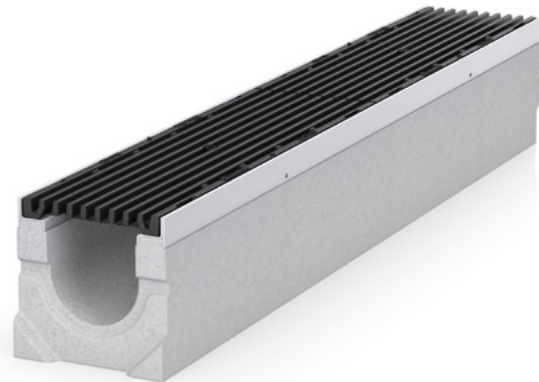
- Constant-depth (same channel depth)
- Built-in fall (150, 200, 300)
- Stepped-fall

Edge Detail

Two options:

- Galvanised steel S275J263+Z
- Stainless steel CNS 1.4301
- Neat, discreet, rigid and aesthetic

*When gratings are fixed with locking bolts/bars, this system is especially resilient to dynamic forces caused by the turning/twisting action of wheels.





RECYFIX NC

RECYFIX NC combines heavy-duty (E 600) loading capability with practical design, easy handling, quick installation and high-performance on site.

RECYFIX NC has a polypropylene edge-frame incorporated within the channel body structure, for improved durability and resilience when trafficked. The system is supplied to site as a fully assembled unit, with heavy-duty slotted gratings (spheroidal ductile iron GJS 500-7) securely bolted within the edge-frame housing (eight steel bolts per metre) for extra strength and safety. Refer to product brochure for detailed information.

Key Features

Material

- Modified Polypropylene (PP) composite

Loading

- System load rated to E 600 (EN 1433: 2002)

Channel Widths

- 100, 150, 200, 300 & 400 mm

Channel Lengths

- 1.0m & 500mm (selected depths)

Grating Options

- Inlay design
- D 400 & E 600 (EN 1433: 2002)
- Spheroidal ductile iron GJS 500-7 'EN1563'
- Slotted grating

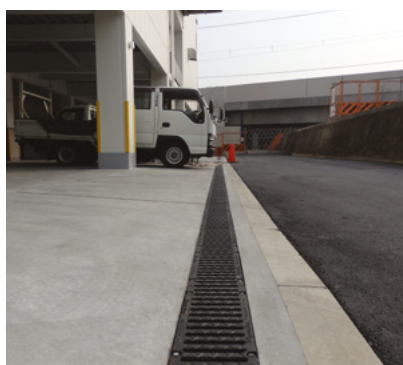
Channel Configuration

- Constant-depth (same channel depth)
- Stepped-fall

Edge Detail

- Polypropylene edge-frame
- Integral part of channel body structure

*This system is especially resilient to dynamic forces caused by the turning/twisting action of wheels.





RECYFIX HICAP F SLOT CHANNEL

Manufactured from high-grade modified Polypropylene (PP) composite, **RECYFIX HICAP F SLOT CHANNEL** is a high-capacity linear drainage system used to provide efficient and cost-effective drainage and attenuation within extensive hard surface areas. Refer to product brochure for detailed information.

Key Features

Material

- Modified Polypropylene (PP) Composite
- Some components in Polyamide (PA-GF)

Loading

- System load rated to F 900 (EN 1433: 2002)

Channel Sizes

- HICAP F 1000, 2000, 3000, 5000, 8000 & 10000

Channel Lengths

- 1.0m & 1.145m (RECYFIX HICAP F 10000)

Grating Options

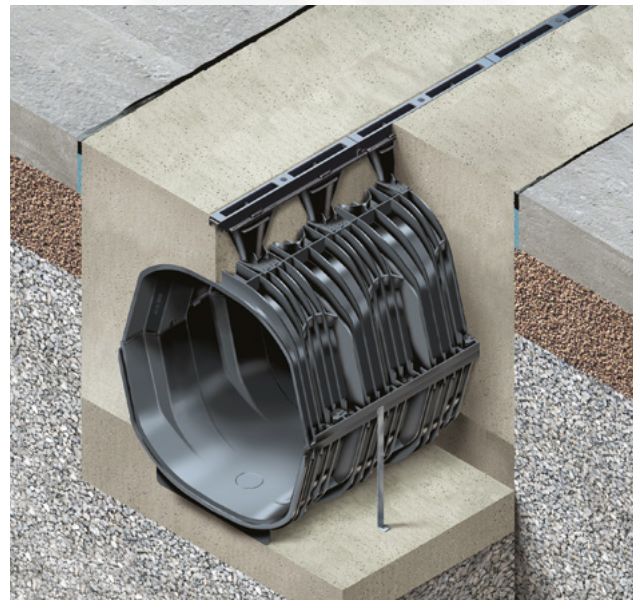
- Retained grating design (non-removable)
- D 400 & F 900 (EN 1433: 2002)
- Spheroidal ductile iron GJS 500-7 'EN1563' (KTL 'Cathodic Dip' Coated)

- Slot 14mm
- Slot 28mm
- Mesh 13/28mm
- Slot 6mm

Channel Configuration

- Constant-depth (same channel depth)
- Stepped-fall

*This system is especially resilient to dynamic forces caused by the turning/twisting action of wheels.





SERVICE CHANNELS

HAURATON SERVICE Channels provide a safe, practical and durable solution for the management and routing of underground cables, utilities and services. The system is supplied with a range of modular accessories including cable trays and junction boxes for easy access and flexible 'space-efficient' design.

SERVICE Channels can be configured from either **RECYFIX** or **FASERFIX** systems, with the most suitable type and size of channel selected to suit specific project requirements.

Key Features

Material

- **RECYFIX** channels in modified Polypropylene (PP)
- **FASERFIX** channels in fibre-reinforced concrete

Loading

- Polypropylene (PP) channels load rated to E 600
- Fibre-reinforced concrete channels load rated to E 600 (EN 1433: 2002)

Channel Widths

- 100, 200, 300, 400 & 500 mm

Channel Lengths

- 1.0m

Cover Options

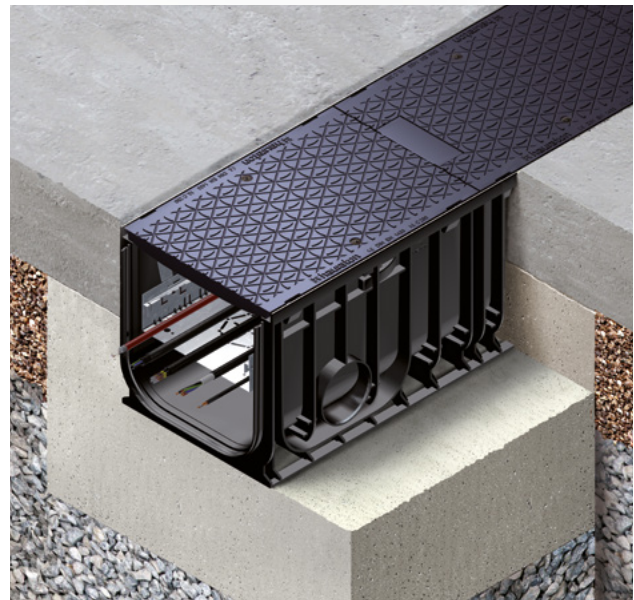
- Inlay design
- Solid covers (anti-slip)
- A 15 & E 600 (EN 1433: 2002)
- Galvanised steel 'chequer plate' (A 15)
- Spheroidal ductile iron GJS 500-7 'EN1563'
- KTL 'cathodic dip' coating (optional)
- Side-Lock boltless locking mechanism

Channel Configuration

- Constant-depth (same channel depth)

Edge Detail

- Galvanised steel S275J263+Z
- Spheroidal ductile iron GJS 500-7 'EN1563' (KTL 'cathodic dip' coated)



DRAINFIX CLEAN

DRAINFIX CLEAN linear drainage 'water treatment' system is a cost-effective, ecological, efficient and immediate solution for the draining, collection and treatment at source of storm water run-off.

The system contains CARBOTEC 60, a carbonate-rich filter substrate through which the cleansing of stormwater occurs, for safe and hygienic use as sanitary water (toilet flushing) and irrigation of soft-landscaping. **DRAINFIX CLEAN** is very effective when used in densely populated areas (streets, parking areas, service yards, landscape projects).

Key Features

Material

- RECYFIX channels in modified Polypropylene (PP)
- FASERFIX channels in fibre-reinforced concrete
- CARBOTEC 60 filter substrate (high carbonate content)

Loading

- Polypropylene (PP) channels load rated to D 400
- Fibre-reinforced concrete channels load rated to F 900 (EN 1433: 2002)

Channel Widths

- 300, 400 & 500 mm

Channel Lengths

- 1.0m

Grating Options

- Inlay design
- Slotted grating
- D 400, E 600 & F 900 (EN 1433: 2002)
- Spheroidal ductile iron GJS 500-7 'EN1563'
- KTL 'cathodic dip' coating (optional)

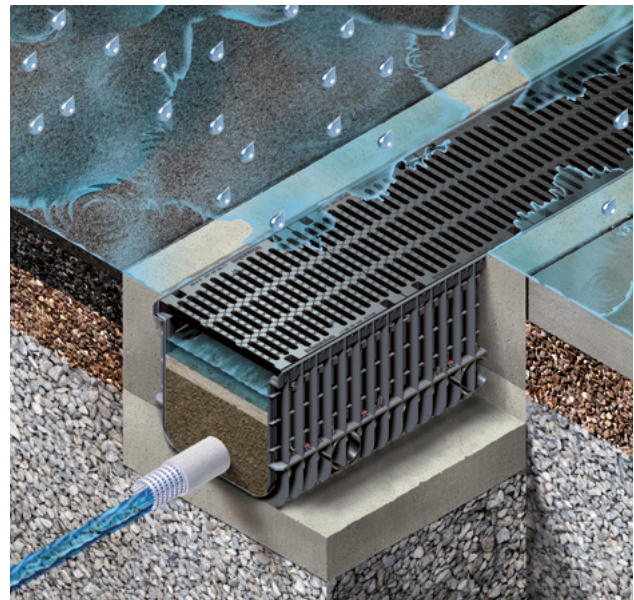
Channel Configuration

- Constant-depth (same channel depth)

Edge Detail

Three options:

- Polypropylene (PP)
- Galvanised steel S275J263+Z
- Spheroidal ductile iron GJS 500-7 'EN1563'



Total Support

Projects Team

HAURATON provides close support to ensure drainage design, specification and installation is quick, efficient and cost-effective.

A team of regional, specification and project managers are available to assist industry professionals at every stage of the construction process. Refer to HAURATON for contact details (www.hauraton.com).

A multinational company, HAURATON has production facilities, subsidiary offices, technical engineers and partners located in many countries and regions of the world.

HAURATON has the knowledge, experience and resources to manage and support all projects successfully, regardless of location.

Design Service

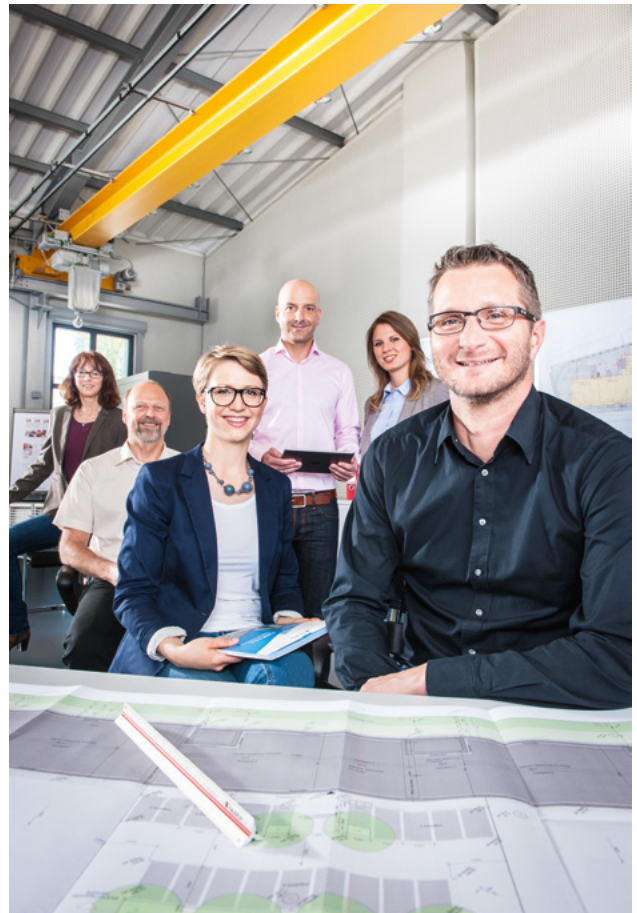
HAURATON offers a comprehensive design service for all product ranges. This is available free of charge and without obligation.

Our approach is to provide innovative 'value-engineered' designs to achieve the most cost-effective drainage solution for the benefit of all parties.

Design proposals can be provided within 24 - 48 hours, depending on the size of the project. Information offered includes:

- Hydraulic calculations for each channel run
- System configuration drawings
- Parts list schedules
- Product dimension drawings
- System installation drawings
- Product and material technical datasheets
- Other technical and support information

Feel free to contact us should you require assistance.



Design Software

Hydraulic Design Software

HAURATON provides a comprehensive design service, which is free of charge.

Our channel drainage configurations are designed and sized using 'hydraulic design software' specifically developed for HAURATON systems.

The formula used within the software is based on that determined by Gauckler-Manning-Strickler. Accuracy has been verified by physical testing of HAURATON systems within a hydraulic discharge test flume, replicating and evaluating hundreds of flow scenarios.

HAURATON 'hydraulic design software' has been used successfully in-house by our technical personnel and partners for over 30 years with total reliability.

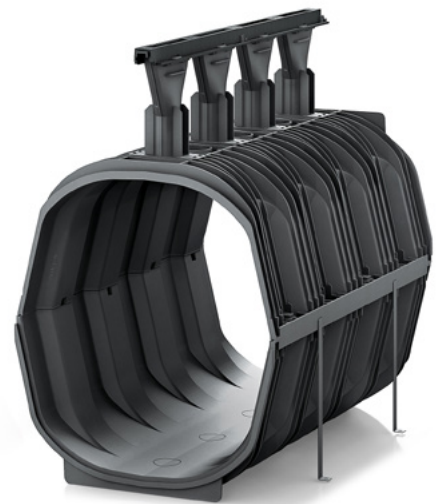
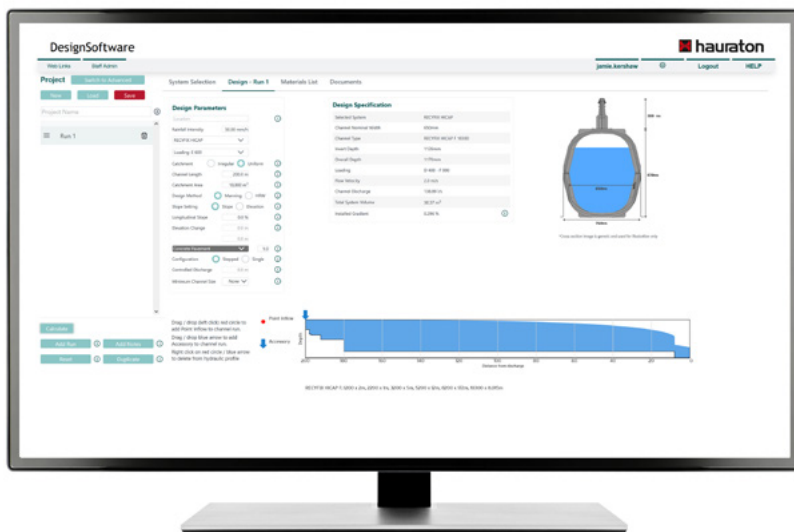
HAURATON DesignSoftware

User-friendly and free-of-charge, our web-based application 'DesignSoftware' provides construction industry professionals with quick, simple hydraulic analysis, channel sizing, project design and product specification for the company's core range of surface drainage systems (for landscape, commercial and civils projects) whilst working on their own desk-top and lap-top computers.

HAURATON 'DesignSoftware' provides engineers with the flexibility to create their own drainage designs, with just three clicks to a hydraulic calculation.

Follow the link below to register and use the software:

<https://hydraulicdesign.hauraton.com/register/>



Quality Assurance

High Standards

HAURATON products and procedures bring quality assurance.

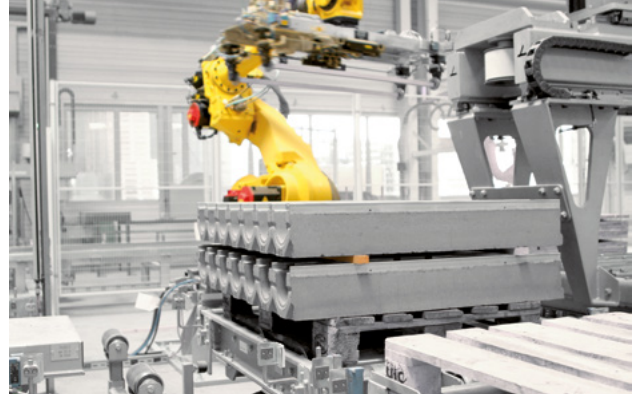
The company operates in accordance with EN ISO 9001: 2015. Production within modern, mechanised facilities in Europe is carefully monitored and controlled to achieve consistent product quality.

HAURATON drainage channels have been independently tested for load capacity and watertightness in accordance with the European Standard EN 1433: 2002. Systems are CE marked for quality assurance.

Proven Performance

Supplied for over sixty-five years and thirty years respectively, **FASERFIX** and **RECYFIX** systems have proven performance, having been used successfully on major projects around the world. Individual project case studies are available from HAURATON.

HAURATON has a reputation for products of the highest quality, durability and reliability.





HAURATON LIMITED
Unit 4 Frenchs Avenue
Dunstable
Bedfordshire
LU6 1BH
United Kingdom
www.hauraton.co.uk
E: sales-uk@hauraton.com
T: +44 (0) 1582 501380
F: +44 (0) 1582 501399

01/2023 | Printed in Germany.

HAURATON takes reasonable and due care when compiling product information for use within marketing and technical documents. Any guidance, recommendations or advice provided regarding **HAURATON** products and systems is given without guarantees, as conditions relating to the use and installation of products and systems is beyond the control and influence of the company. The customer has the final responsibility to ensure the suitability of the system regarding its use and application for their project.

HAURATON reserves the right to make changes to products, system designs and company information without notice.