

## **RECYFIX NC**

**Extremely stable and lightweight -  
channels made for many industrial  
applications - up to load class E600kN**

# Contents

| Product range  |  | Loading category   | Page       |
|----------------|--|--------------------|------------|
| RECYFIX NC     | Overview   |                    | <b>3</b>   |
|                | Features & Benefits  |                    | <b>4-5</b> |
|                | Applications   |                    | <b>6-7</b> |
| RECYFIX NC 100 | Ductile iron gratings 4 bolt fixing<br>Ductile iron gratings 8 bolt fixing | Class D400         | <b>8</b>   |
|                | Ductile iron gratings 4 bolt fixing<br>Ductile iron gratings 8 bolt fixing | Class E600         | <b>9</b>   |
|                | Accessories - Trash boxes  | Classes D400, E600 | <b>10</b>  |
|                | Accessories - End caps   | N/A                |            |
|                | Further accessories - Step fall adapter etc                                | N/A                | <b>11</b>  |
| RECYFIX NC 150 | Ductile iron gratings 8 bolt fixing<br>Ductile iron gratings 4 bolt fixing | Class D400         | <b>12</b>  |
|                | Ductile iron gratings 8 bolt fixing<br>Ductile iron gratings 4 bolt fixing | Class E600         |            |
|                | Accessories - Trash boxes  | Classes D400, E600 | <b>13</b>  |
|                | Accessories - End caps   | N/A                |            |
|                | Further accessories - sealing materials etc                                | N/A                |            |
| RECYFIX NC 200 | Ductile iron gratings 8 bolt fixing<br>Ductile iron gratings 4 bolt fixing | Class D400         | <b>14</b>  |
|                | Ductile iron gratings 8 bolt fixing<br>Ductile iron gratings 4 bolt fixing | Class E600         |            |
|                | Accessories - Trash boxes  | Classes D400, E600 | <b>15</b>  |
|                | Accessories - End caps   | N/A                |            |
|                | Further accessories- sealing materials etc                                 | N/A                |            |
| RECYFIX NC 300 | Ductile iron gratings 8 bolt fixing  | Class D400         | <b>16</b>  |
|                | Ductile iron gratings 8 bolt fixing  | Class E600         |            |
|                | Accessories - End caps   | N/A                | <b>17</b>  |
|                | Further accessories- sealing materials etc                                 | N/A                |            |
| RECYFIX NC 400 | Ductile iron gratings 8 bolt fixing  | Class D400         | <b>18</b>  |
|                | Accessories - End caps   | N/A                | <b>19</b>  |
|                | Further accessories- sealing materials etc                                 | N/A                |            |

# RECYFIX®NC

**Extremely stable and lightweight** - channels made of robust reinforced PP.

## 1 Requirement

Modern drainage systems must

- withstand high loads and dynamic forces.
- be easy to install.
- be resistant to environmental influences (frost, heat, humidity).
- comply with EN 1433.

## 2 Application areas

- traffic areas for industry
- loading and unloading zones
- highly trafficked car parks
- public areas
- petrol stations

## 3 Solutions

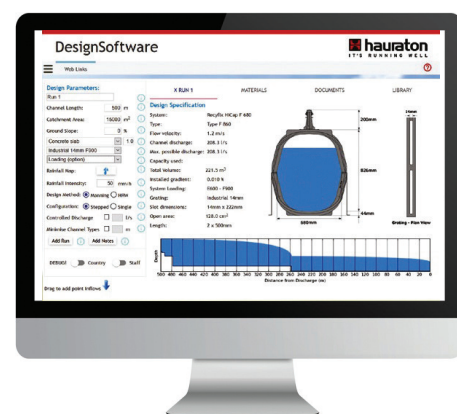
RECYFIX NC channels:

- manufactured from reinforced PP
- load capacity up to E 600 according to EN 1433
- maximum security with 8 bolt fixing per metre
- very lightweight, quick and cost saving installation.

A selection of Hydraulic Performance tables for the most popular sizes of FASERFIX and RECYFIX channels including the RECYFIX MONOTEC and RECYFIX HICAP ranges are available on request in an 8 page hard copy or PDF publication.

Hauraton channel drainage configurations are designed and sized using in-house **Hydraulic design software**. The accuracy of the software has been verified by physical testing of Hauraton systems within a hydraulic discharge test flume, replicating and evaluating hundreds of flow scenarios.

Hydraulic design software is also available free of charge to industry professionals. Intuitive and user friendly, **Hauraton Design Software** allows engineers to create drainage schemes for the company's range of civil engineering systems on tablets, desktop computers or through the internet (web-based application).

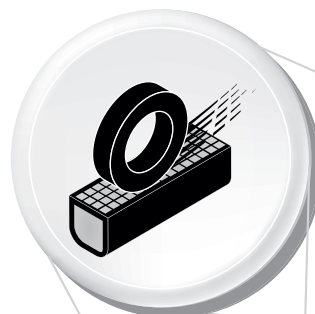


For smaller projects where a quick indication of the appropriate channel size and system is required for a given catchment area, Hauraton can provide their **Hydraulic Design App**.

For further details contact the Hauraton Technical Support Team



# Features and benefits of **RECYFIX** NC channels



## high stability

- stable, durable ductile iron grating
- RECYFIX® NC 100, 200, 300: load class E 600
- RECYFIX® NC 400: load class D 400
- 8 bolts per metre fixing

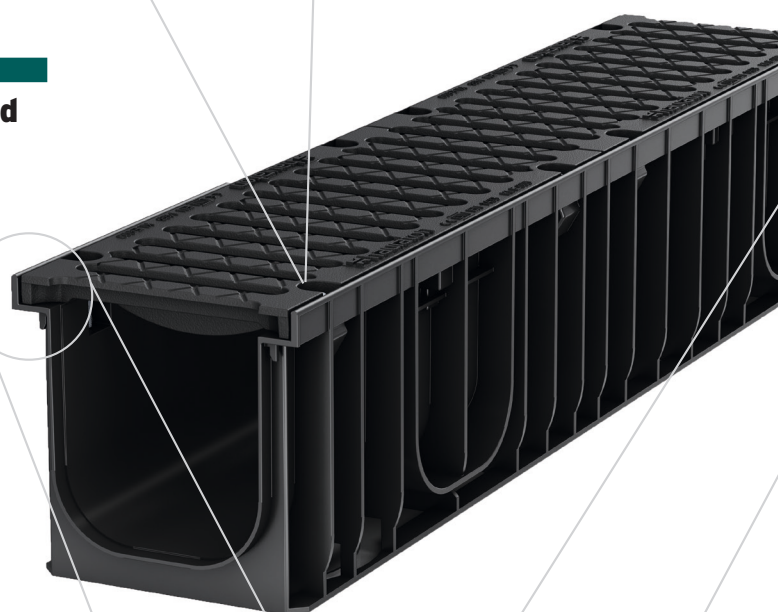
**= safety & durability**



## standards and approvals

- certified to EN 1433
- CE-marking

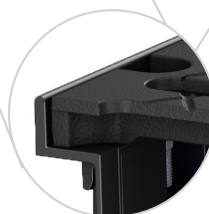
**= safety**



## low weight ensures easy handling on site

- much easier handling on site compared to channels made of polymer concrete
- simple installation
- maximum stability with minimum weight

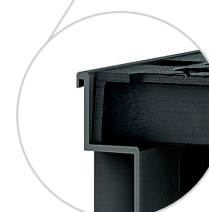
**= cost saving**



## integrated angle housing

- angle housing acc. EN 1433
- angle housing is moulded as an integral part of the channel body (made of PP)
- ridges to stop any lateral movement

**= safety**







### continuous innovation

- 20 years of experience
- unique material: 100% recycled material

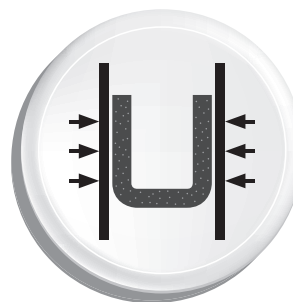
**= safety**



### prefabricated ready to install

- channel and grating = one part
- no single parts
- easy handling in stock and on site
- cost-effective transportation

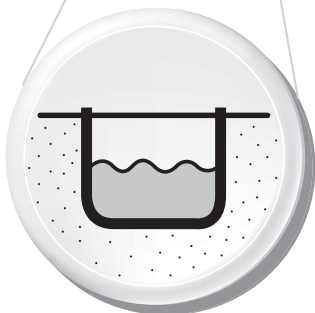
**= more earnings**



### high-grade material

- RECYFIX - robust flexible and particularly resistant material
- withstands high traffic loads and temperature differences in daily use

**= safety & durability**



### high hydraulic capacity

- drainage cross-section NC400= 1640 cm<sup>2</sup>
- more area per channel meter can be drained

**= safety**

Where channel gratings will not be trafficked a KTL electrostatic coating can be specified to prevent oxidation.

# RECYFIX NC

**Extremely stable and lightweight** - channels made of reinforced PP.

RECYFIX NC channels meet the requirements of DIN EN 1433 and are suitable for the following load categories:



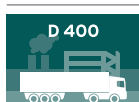
**Category A 15,**  
**Load class 15 kN**  
Traffic areas without car access



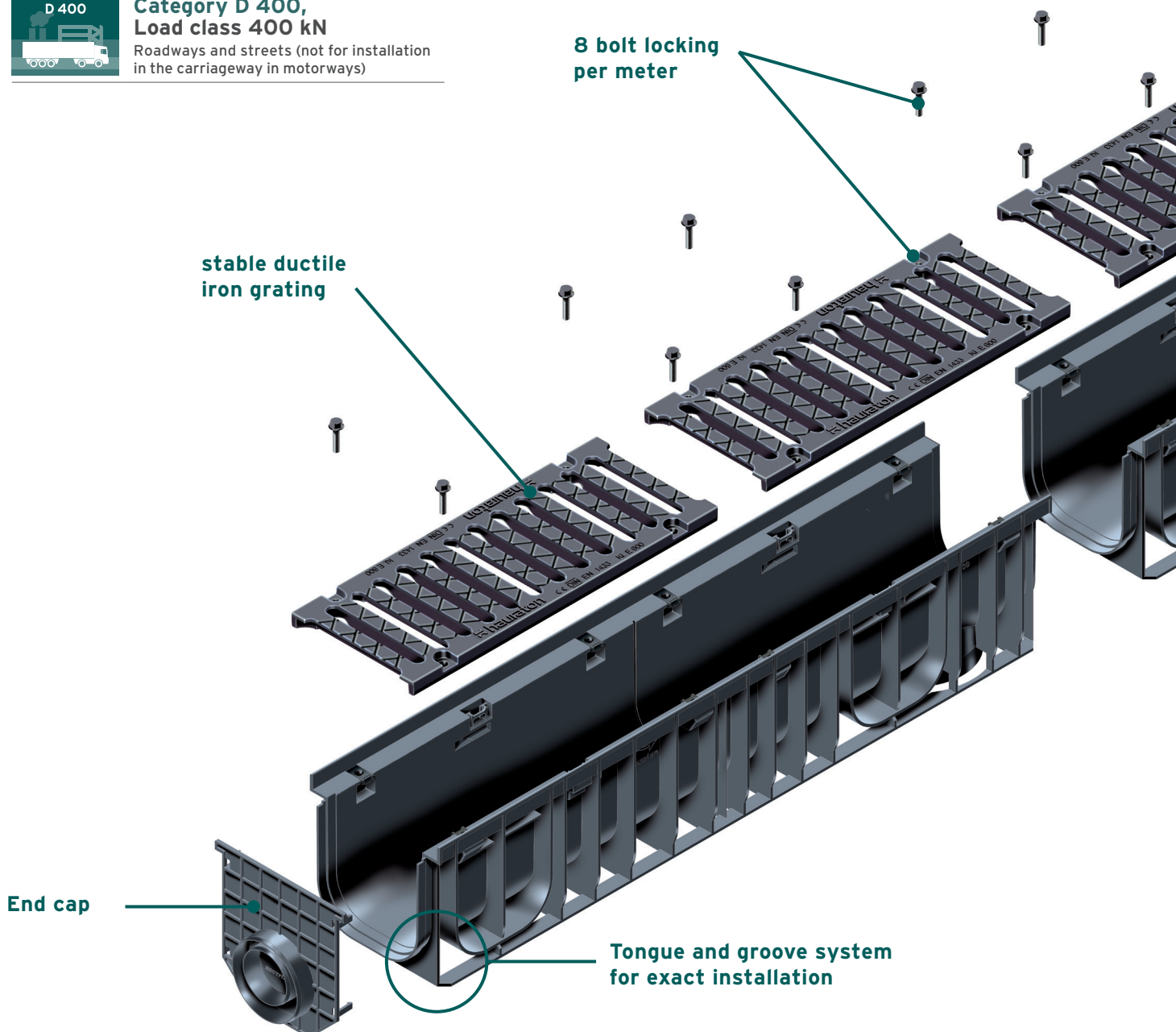
**Category B 125,**  
**Load class 125 kN**  
Traffic areas on private premises

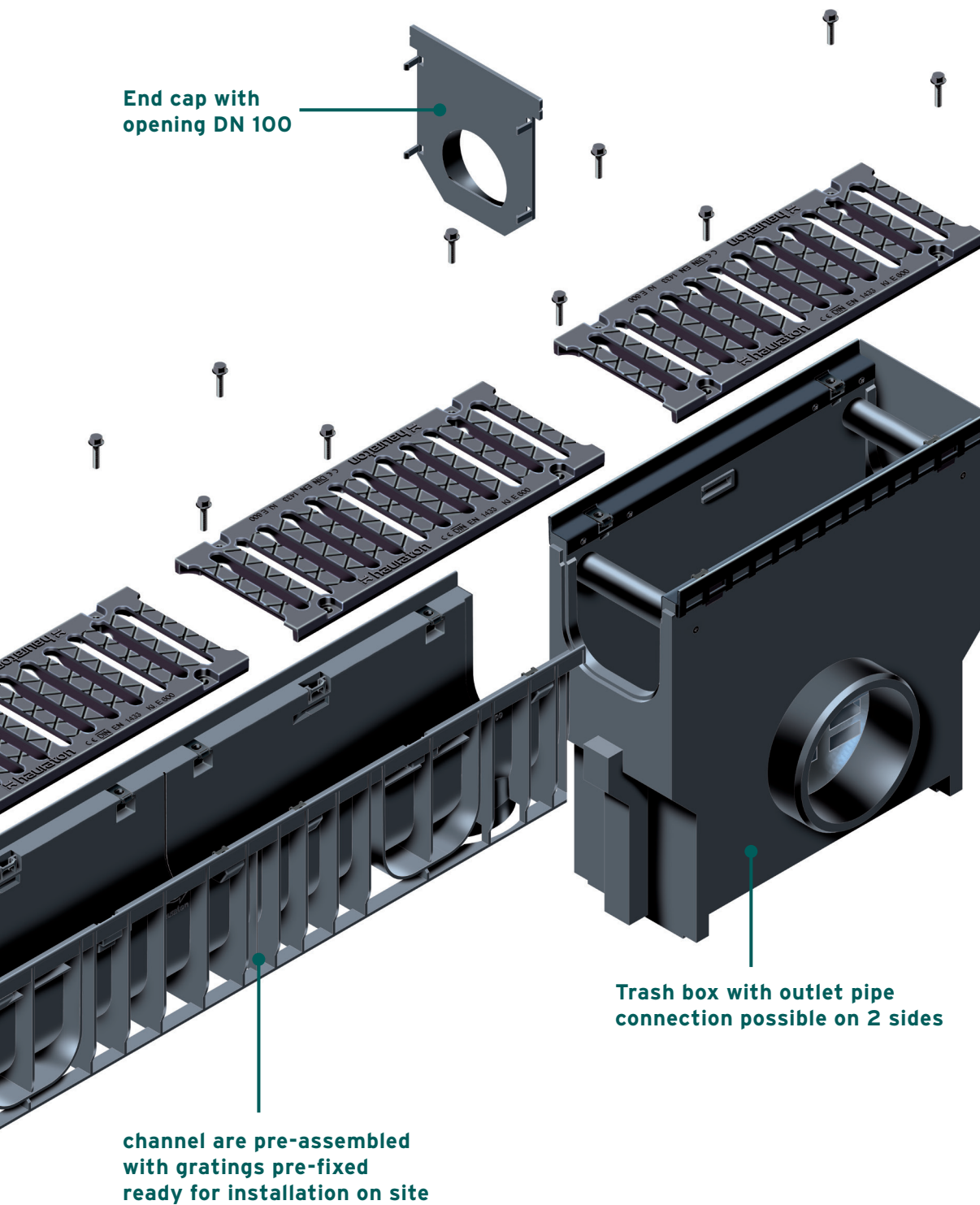


**Category C 250,**  
**Load class 250 kN**  
Public areas with light traffic  
and moderate frequency



**Category D 400,**  
**Load class 400 kN**  
Roadways and streets (not for installation  
in the carriageway in motorways)



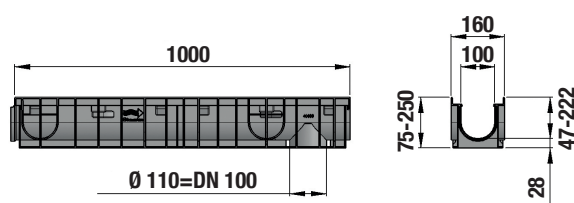
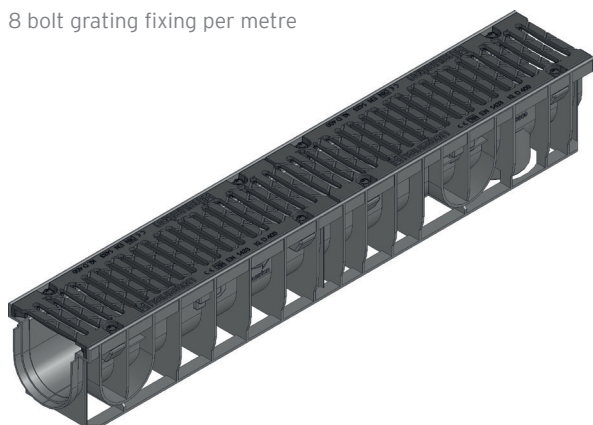


# RECYFIX NC 100

## Combi article

### RECYFIX NC 100, class D 400

8 bolt grating fixing per metre



|   | Length<br>mm | Width<br>mm | Height<br>mm | Invert<br>mm | Drainage<br>cross-sect.<br>cm <sup>2</sup> | Intake<br>cross-sect.<br>cm <sup>2</sup> /m | Weight<br>kg | Item No. |
|---|--------------|-------------|--------------|--------------|--|---|--------------|----------|
| Type 01 with ductile iron grating, black,<br>SW 10 mm, 8 bolt fixing    | 1000         | 160         | 150          | 122          | 92   | 427   | 10,7         | 48771    |
| Type 0105 with ductile iron grating, black,<br>SW 10 mm, 4 bolt fixing  | 500          | 160         | 150          | 122          | 92   | 427   | 5,4          | 48746    |
| Type 010 with ductile iron grating, black,<br>SW 10 mm, 8 bolt fixing   | 1000         | 160         | 200          | 172          | 142  | 427   | 11,6         | 48773    |
| Type 01005 with ductile iron grating, black,<br>SW 10 mm, 4 bolt fixing | 500          | 160         | 200          | 172          | 142  | 427   | 5,8          | 48745    |
| Type 020 with ductile iron grating,<br>SW 10, black, 8 bolt fixing      | 1000         | 160         | 250          | 222          | 192  | 427   | 12,4         | 48777    |
| Type 02005 with ductile iron grating,<br>SW 10, black, 4 bolt fixing    | 500          | 160         | 250          | 222          | 192  | 427   | 6,2          | 48779    |
| Type 75 with ductile iron grating,<br>SW 10, black, 8 bolt fixing       | 1000         | 160         | 75           | 55           | 35   | 427   | 10,3         | 48775    |

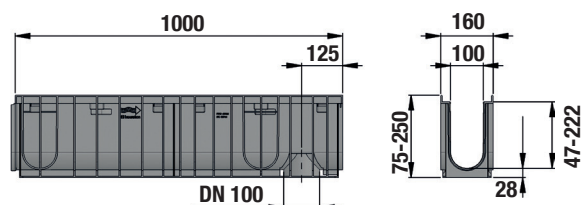
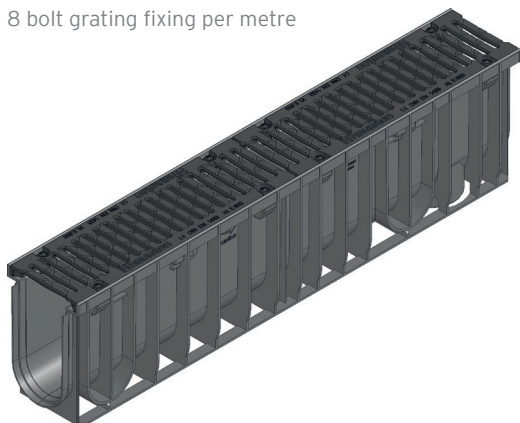




# RECYFIX NC 100

## RECYFIX NC 100, class E 600

8 bolt grating fixing per metre



|  | Length<br>mm | Width<br>mm | Height<br>mm | Invert<br>mm | Drainage<br>cross-sect.<br>cm <sup>2</sup> | Intake<br>cross-sect.<br>cm <sup>2</sup> /m | Weight<br>kg | Item No. |
|--|--------------|-------------|--------------|--------------|--|---|--------------|----------|
| Type 01 with ductile iron grating, black, SW 10 mm, 8 bolt fixing    | 1000         | 160         | 150          | 122          | 92   | 427   | 10,7         | 48770    |
| Type 0105 with ductile iron grating, black, SW 10 mm, 4 bolt fixing  | 500          | 160         | 150          | 122          | 92   | 427   | 5,4          | 48748    |
| Type 010 with ductile iron grating, black, SW 10 mm, 8 bolt fixing   | 1000         | 160         | 200          | 172          | 142  | 427   | 11,6         | 48772    |
| Type 01005 with ductile iron grating, black, SW 10 mm, 4 bolt fixing | 500          | 160         | 200          | 172          | 142  | 427   | 5,8          | 48747    |
| Type 020 with ductile iron grating, SW 10, black, 8 bolt fixing      | 1000         | 160         | 250          | 222          | 192  | 427   | 12,5         | 48776    |
| Type 02005 with ductile iron grating, SW 10, black, 4 bolt fixing    | 500          | 160         | 250          | 222          | 192  | 427   | 6,2          | 48778    |
| Type 75 with ductile iron grating, black, SW 10 mm, 8 bolt fixing    | 1000         | 160         | 75           | 55           | 35   | 427   | 10,2         | 48774    |

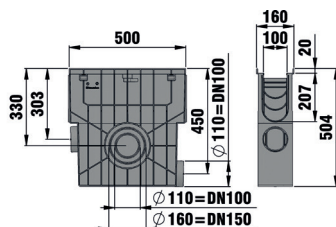
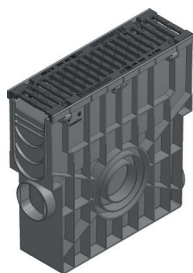


Industrial yard

# RECYFIX NC 100

## Accessories

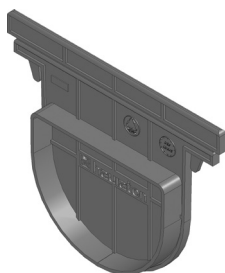
### Trash boxes



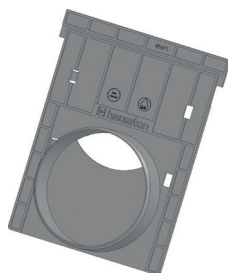
Trash box with plastic bucket, with ductile iron grating, black, SW 10 mm, class E 600, 4 bolt fixing

|   | Length<br>mm | Width<br>mm | Height<br>mm | Weight<br>kg | Item No. |
|---|--------------|-------------|--------------|--------------|----------|
| Trash box with plastic bucket, with ductile iron grating, black, SW 10 mm, class D 400, 4-fold fixing | 500          | 160         | 504          | 8,3          | 48754    |
| Trash box with plastic bucket, with ductile iron grating, black, SW 10 mm, class E 600, 4-fold fixing | 500          | 160         | 504          | 8,3          | 48753    |

### End caps



End cap closed



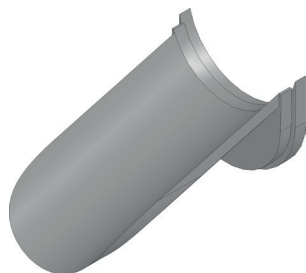
End cap with outlet DN 100

|   | Length<br>mm | Width<br>mm | Height<br>mm | Weight<br>kg | Item No. |
|---|--------------|-------------|--------------|--------------|----------|
| End cap closed for type 01              | -            | 160         | 124          | -            | 48681    |
| End cap with outlet DN 100 for type 01  | -            | 160         | 200          | 0,1          | 48691    |
| End cap closed for type 010             | -            | 160         | 176          | 0,1          | 47082    |
| End cap with outlet DN 100 for type 010 | -            | 160         | 201          | 0,1          | 47093    |
| End cap, closed for type 020            | -            | 160         | -            | 0,1          | 48683    |
| End cap with outlet DN 100, type 020    | -            | 160         | -            | 0,1          | 48695    |
| End cap closed for type 75              | -            | 160         | 61           | -            | 47097    |



# RECYFIX NC 100

## Further accessories



Step Fall Adapter for step slope, from type 01 to type 010 (for RECYFIX NC and RECYFIX PRO also from type 010 to type 020)

|  | Length<br>mm | Width<br>mm | Height<br>mm | Weight<br>kg | Item No. |
|--|--------------|-------------|--------------|--------------|----------|
| Step Fall Adapter for step slope, from type 01 to type 010 (for RECYFIX NC and RECYFIX PRO also from type 010 to type 020) | 174          | 98          | 92           | 0,2          | 48790    |
| RECYFIX sealing material, 290 ml   | -            | -           | -            | 0,5          | 19053    |
| RECYFIX primer, 250 ml   | -            | -           | -            | 0,5          | 19054    |



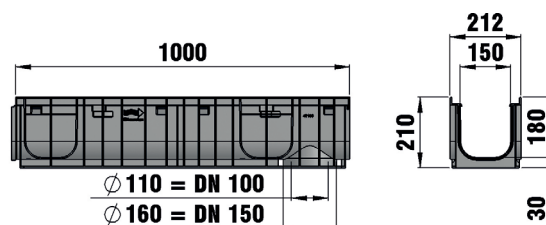
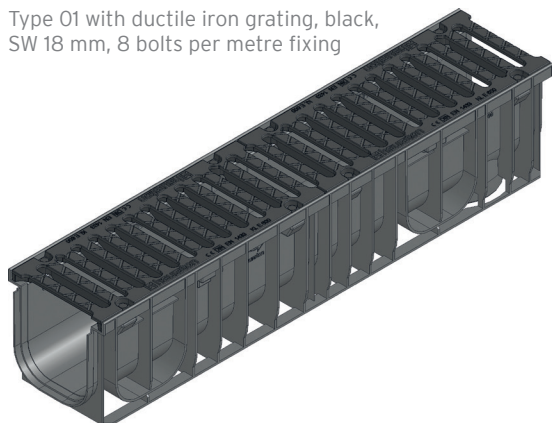
Petrol Filling Station

# RECYFIX NC 150

## Combi article

### RECYFIX NC 150, class D 400

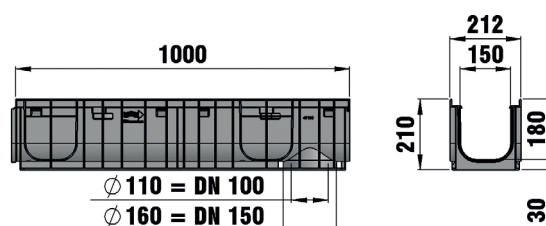
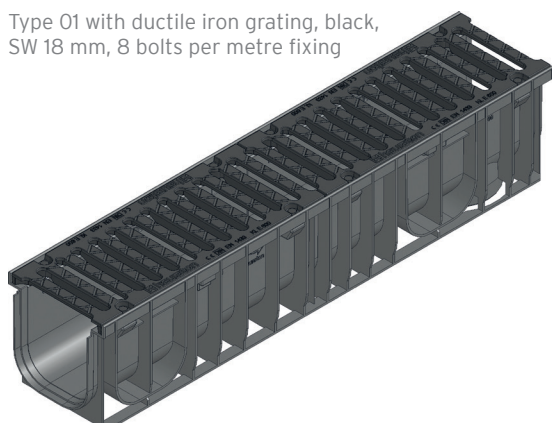
Type 01 with ductile iron grating, black,  
SW 18 mm, 8 bolts per metre fixing



|  | Length<br>mm | Width<br>mm | Height<br>mm | Invert<br>mm | Drainage<br>cross-sect.<br>cm <sup>2</sup> | Intake<br>cross-sect.<br>cm <sup>2</sup> /m | Weight<br>kg | Item No. |
|--|--------------|-------------|--------------|--------------|--|---|--------------|----------|
| Type 01 with ductile iron grating, black,<br>SW 18 mm, 8 bolt fixing   | 1000         | 212         | 210          | 180          | 230  | 702   | 15,7         | 48871    |
| Type 0105 with ductile iron grating, black,<br>SW 18 mm, 4 bolt fixing | 500          | 212         | 210          | 180          | 230  | 702   | 7,9          | 48847    |

### RECYFIX NC 150, class E 600

Type 01 with ductile iron grating, black,  
SW 18 mm, 8 bolts per metre fixing

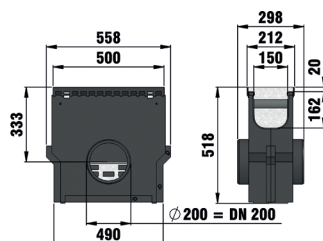
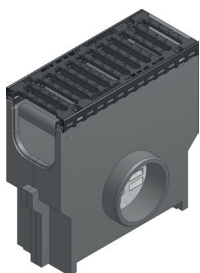


|  | Length<br>mm | Width<br>mm | Height<br>mm | Invert<br>mm | Drainage<br>cross-sect.<br>cm <sup>2</sup> | Intake<br>cross-sect.<br>cm <sup>2</sup> /m | Weight<br>kg | Item No. |
|--|--------------|-------------|--------------|--------------|--|---|--------------|----------|
| Type 01 with ductile iron grating, black,<br>SW 18 mm, 8 bolt fixing   | 1000         | 212         | 210          | 180          | 230  | 702   | 15,7         | 48870    |
| Type 0105 with ductile iron grating, black,<br>SW 18 mm, 4 bolt fixing | 500          | 212         | 210          | 180          | 230  | 702   | 7,9          | 48848    |

# RECYFIX NC 150

## Accessories

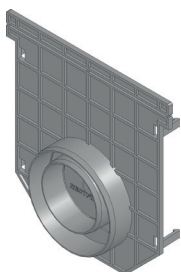
### Trash boxes



Trash box with plastic bucket, with ductile iron grating, black, SW 18 mm, class E 600, 4 bolt fixing

|   | Length<br>mm | Width<br>mm | Height<br>mm | Weight<br>kg | Item No. |
|---|--------------|-------------|--------------|--------------|----------|
| Trash box with plastic bucket, with ductile iron grating, black, SW 18 mm, class E 400, 4 bolt fixing | 500          | 212         | 518          | 22,9         | 48854    |
| Trash box with plastic bucket, with ductile iron grating, black, SW 18 mm, class E 600, 4 bolt fixing | 500          | 212         | 518          | 22,9         | 48853    |

### End caps



End cap combined, PP with outlet DN 70/100 for type 01

|  | Length<br>mm | Width<br>mm | Height<br>mm | Weight<br>kg | Item No. |
|--|--------------|-------------|--------------|--------------|----------|
| End cap combined, PP with outlet DN 70/100 for type 01 | -            | 210         | 218          | 0,2          | 40591    |

### Further accessories

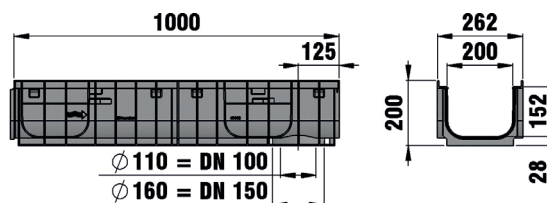
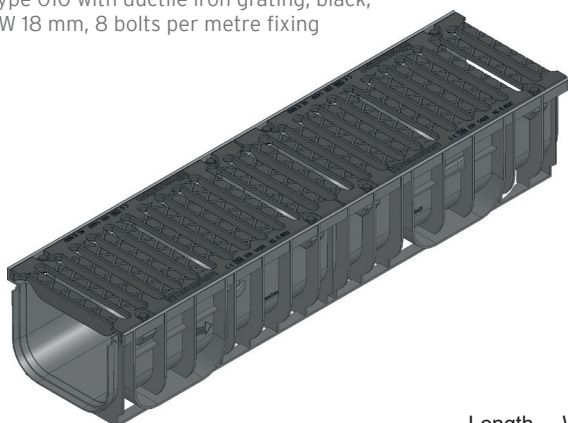
|                                  | Length<br>mm | Width<br>mm | Height<br>mm | Weight<br>kg | Item No. |
|----------------------------------|--------------|-------------|--------------|--------------|----------|
| RECYFIX sealing material, 290 ml | -            | -           | -            | 0,5          | 19053    |
| RECYFIX primer, 250 ml           | -            | -           | -            | 0,5          | 19054    |

# RECYFIX NC 200

## Combi article

### RECYFIX NC 200, class D 400

Type 010 with ductile iron grating, black,  
SW 18 mm, 8 bolts per metre fixing

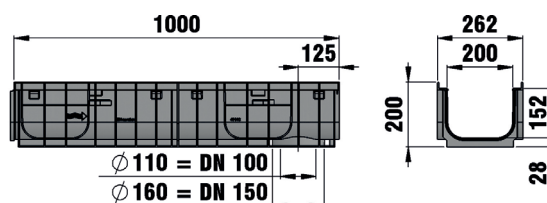
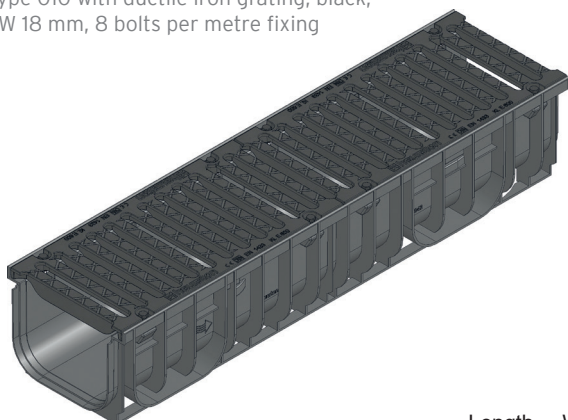


|   | Length<br>mm | Width<br>mm | Height<br>mm | Invert<br>mm | Drainage<br>cross-sect.<br>cm <sup>2</sup> | Intake<br>cross-sect.<br>cm <sup>2</sup> /m | Weight<br>kg | Item No. |
|---|--------------|-------------|--------------|--------------|--|---|--------------|----------|
| Type 010 with ductile iron grating, black,<br>SW 18 mm, 8 bolt fixing   | 1000         | 262         | 200          | 172          | 294  | 936   | 20,8         | 49573    |
| Type 01005 with ductile iron grating, black,<br>SW 18 mm, 4 bolt fixing | 500          | 262         | 200          | 172          | 294  | 936   | 10,4         | 49548    |

## Combi article

### RECYFIX NC 200, class E 600

Type 010 with ductile iron grating, black,  
SW 18 mm, 8 bolts per metre fixing

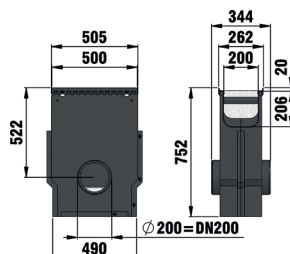


|   | Length<br>mm | Width<br>mm | Height<br>mm | Invert<br>mm | Drainage<br>cross-sect.<br>cm <sup>2</sup> | Intake<br>cross-sect.<br>cm <sup>2</sup> /m | Weight<br>kg | Item No. |
|---|--------------|-------------|--------------|--------------|--|---|--------------|----------|
| Type 010 with ductile iron grating, black,<br>SW 18 mm, 8 bolt fixing   | 1000         | 262         | 200          | 172          | 294  | 936   | 20,8         | 49572    |
| Type 01005 with ductile iron grating, black,<br>SW 18 mm, 4 bolt fixing | 500          | 262         | 200          | 172          | 294  | 936   | 10,4         | 49547    |

# RECYFIX NC 200

## Accessories

### Trash boxes



Trash box with plastic bucket, with ductile iron grating, black, SW 18 mm, class E 600, 4 bolts fixing

|   | Length<br>mm | Width<br>mm | Height<br>mm | Weight<br>kg | Item No. |
|---|--------------|-------------|--------------|--------------|----------|
| Trash box with plastic bucket, with ductile iron grating, black, SW 18 mm, class E 400, 4 bolt fixing | 500          | 262         | 752          | 35,2         | 49554    |
| Trash box with plastic bucket, with ductile iron grating, black, SW 18 mm, class E 600, 4 bolt fixing | 500          | 262         | 752          | 35,2         | 49553    |

### End caps



End cap combined made of PP closed / with outlet DN 100, Type 010

|   | Length<br>mm | Width<br>mm | Height<br>mm | Weight<br>kg | Item No. |
|---|--------------|-------------|--------------|--------------|----------|
| End cap combined made of PP closed / with outlet DN 100, Type 010 | -            | 258         | 217          | 0,2          | 41387    |

### Further accessories

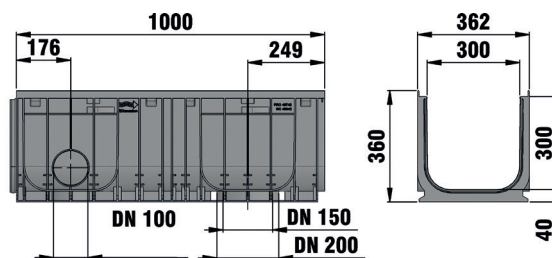
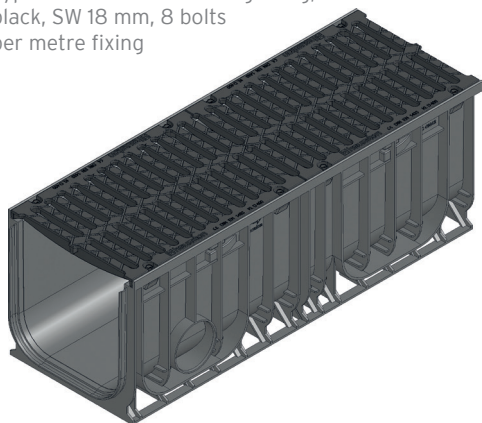
|                                  | Length<br>mm | Width<br>mm | Height<br>mm | Weight<br>kg | Item No. |
|----------------------------------|--------------|-------------|--------------|--------------|----------|
| RECYFIX sealing material, 290 ml | -            | -           | -            | 0,5          | 19053    |
| RECYFIX primer, 250 ml           | -            | -           | -            | 0,5          | 19054    |

# RECYFIX NC 300

## Combi article

### RECYFIX NC 300, class D 400

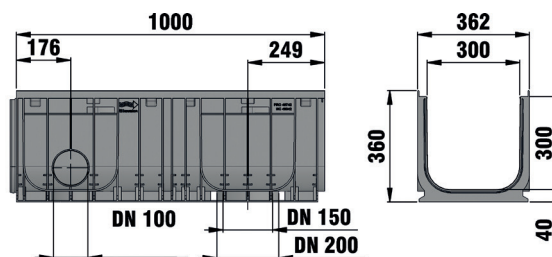
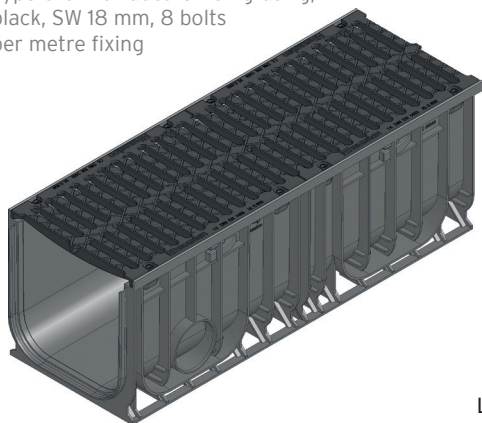
Type 010 with ductile iron grating, black, SW 18 mm, 8 bolts per metre fixing



|  | Length<br>mm | Width<br>mm | Height<br>mm | Invert<br>mm | Drainage<br>cross-sect.<br>cm <sup>2</sup> | Intake<br>cross-sect.<br>cm <sup>2</sup> /m | Weight<br>kg | Item No. |
|--|--------------|-------------|--------------|--------------|--|---|--------------|----------|
| Type 010 with ductile iron grating, black, SW 18 mm, 8 bolt fixing | 1000         | 362         | 360          | 320          | 873  | 1293  | 34,7         | 49873    |

### RECYFIX NC 300, class E 600

Type 010 with ductile iron grating, black, SW 18 mm, 8 bolts per metre fixing



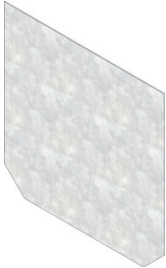
|  | Length<br>mm | Width<br>mm | Height<br>mm | Invert<br>mm | Drainage<br>cross-sect.<br>cm <sup>2</sup> | Intake<br>cross-sect.<br>cm <sup>2</sup> /m | Weight<br>kg | Item No. |
|--|--------------|-------------|--------------|--------------|--|---|--------------|----------|
| Type 010 with ductile iron grating, black, SW 18 mm, 8 bolt fixing | 1000         | 362         | 360          | 320          | 873  | 1293  | 35,0         | 49872    |



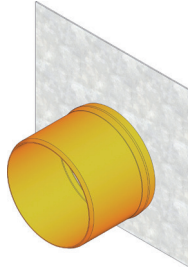
# RECYFIX NC 300

## Accessories

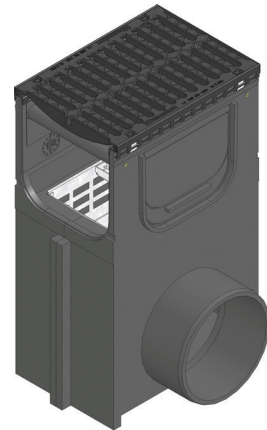
### Trash Boxes and End caps



end cap closed, galvanised,  
type 010



End cap with horizontal UP-  
VC-outlet DN 200, galvanised,  
Type 010



Trash box with KTL galvanised  
angle housing with ductile iron  
grating SW 18mm Cl.E600

|  | Length<br>mm | Width<br>mm | Height<br>mm | Weight<br>kg | Item No. |
|--|--------------|-------------|--------------|--------------|----------|
| End cap closed, galvanised, type 010   | -            | 360         | 360          | 1,9          | 49783    |
| End cap with horizontal UPVC-outlet DN 200, galvanised, Type 010   | -            | 360         | 360          | 2,6          | 49791    |
| Trash box with KTL coated galvanised angle housing with ductile iron grating SW 18mm, black cl. D 400, locked with galvanised bucket, with PVC-U pipe outlet DN/OD 200   | 500          | 362         | 862          | 50,46        | 32330    |
| Trash box with KTL coated angle housing with ductile iron grating SW 18mm, black, cl. D 400, locked, with galvanised bucket, with PVC-U pipe outlet DN/OD 315            | 500          | 362         | 862          | 50,46        | 32337    |
| Trash box with KTL coated galvanised angle housing with ductile iron grating SW 18mm, black, cl. E 600, locked, with galvanised bucket, with PVC-U pipe outlet DN/OD 200 | 500          | 362         | 862          | 50,47        | 32331    |
| Trash box with KTL coated angle housing with ductile iron grating SW 18mm, black, cl. E 600, locked, with galvanised bucket, with PVC-U pipe outlet DN/OD 315            | 500          | 247         | 862          | 50,47        | 32338    |

### Further accessories

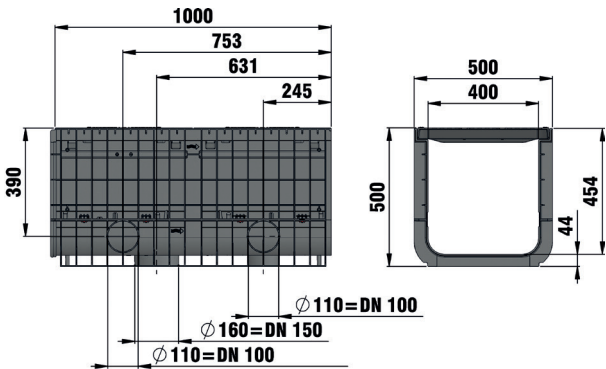
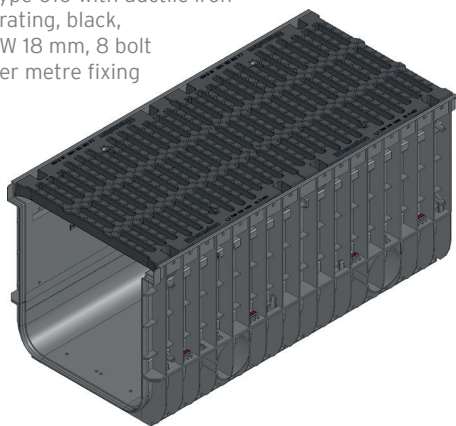
|                                  | Length<br>mm | Width<br>mm | Height<br>mm | Weight<br>kg | Item No. |
|----------------------------------|--------------|-------------|--------------|--------------|----------|
| RECYFIX sealing material, 290 ml | -            | -           | -            | 0,5          | 19053    |
| RECYFIX primer, 250 ml           | -            | -           | -            | 0,5          | 19054    |

# RECYFIX NC 400

## Combi article

### RECYFIX NC 400, class D 400

Type 010 with ductile iron grating, black, SW 18 mm, 8 bolt per metre fixing



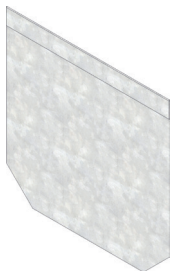
|  | Length<br>mm | Width<br>mm | Height<br>mm | Invert<br>mm | Drainage<br>cross-sect.<br>cm <sup>2</sup> | Intake<br>cross-sect.<br>cm <sup>2</sup> /m | Weight<br>kg | Item No. |
|--|--------------|-------------|--------------|--------------|--|---|--------------|----------|
| Type 010 with ductile iron grating, black, SW 18 mm, 8 bolt fixing | 1000         | 500         | 500          | 456          | 1640                                       | 1753  | 57,2         | 42421    |



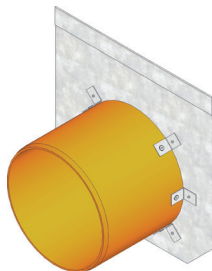
# RECYFIX NC 400

## Accessories

### End caps



End cap closed, type 010



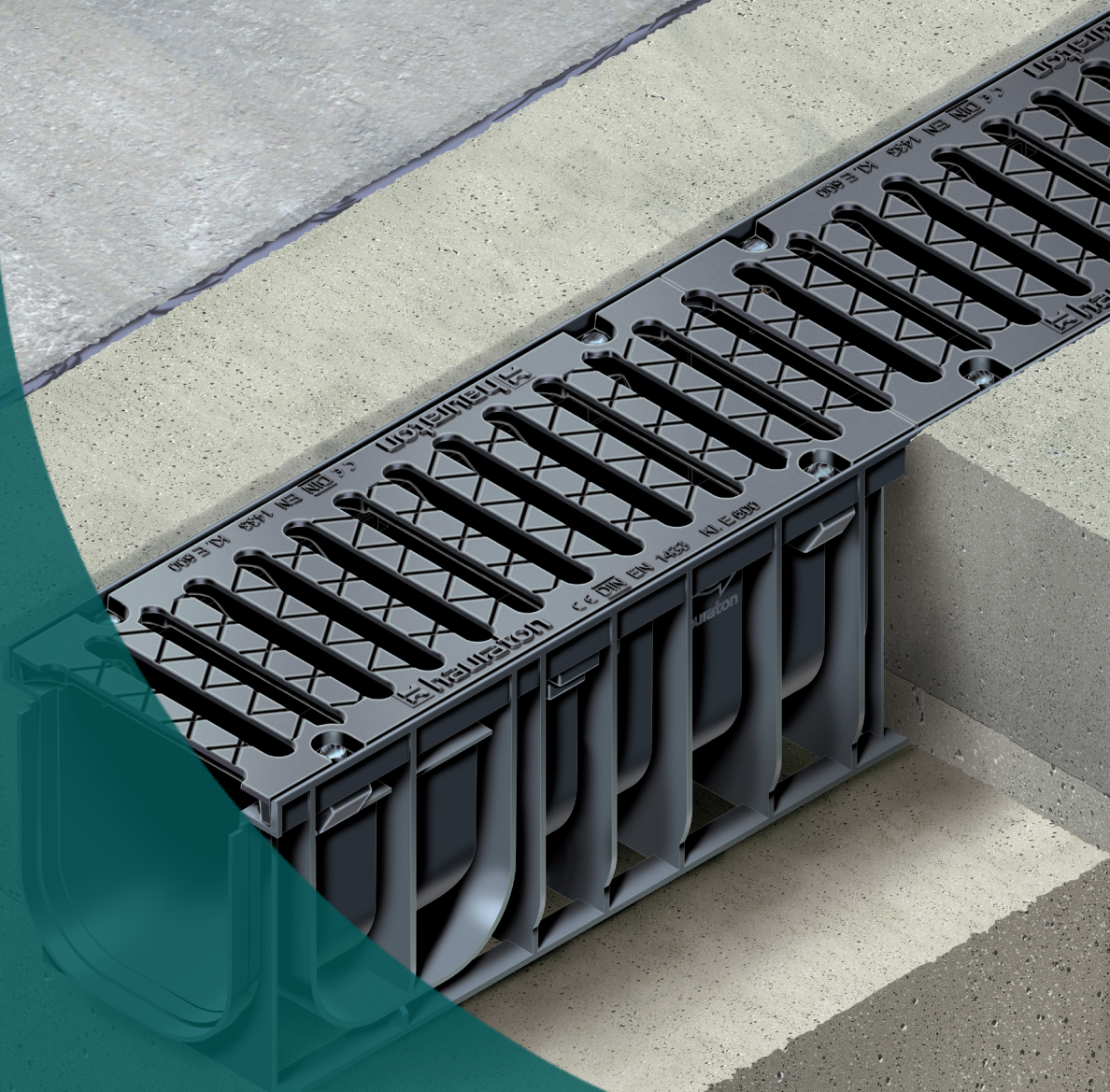
End cap with horizontal UPVC - outlet DN 300, type 010

|  | Length<br>mm | Width<br>mm | Height<br>mm | Weight<br>kg | Item No. |
|--|--------------|-------------|--------------|--------------|----------|
| End cap closed, type 010                               | -            | 500         | 498          | 3,1          | 42481    |
| End cap with horizontal UPVC - outlet DN 300, type 010 | -            | 500         | 498          | 4,9          | 42487    |

### Further accessories

|                                  | Length<br>mm | Width<br>mm | Height<br>mm | Weight<br>kg | Item No. |
|----------------------------------|--------------|-------------|--------------|--------------|----------|
| RECYFIX sealing material, 290 ml | -            | -           | -            | 0,5          | 19053    |
| RECYFIX primer, 250 ml           | -            | -           | -            | 0,5          | 19054    |





09/2022 |  
All drawings, measurements and weights  
are non-committal. We reserve the right to  
do technical changes for improvement

**HAURATON LIMITED**  
Unit 4, Frenchs Avenue  
Dunstable, Bedfordshire  
LU6 1BH  
Tel. 01582 501380  
Fax 01582 501399  
TS-UK@hauraton.com  
[www.hauraton.co.uk](http://www.hauraton.co.uk)