

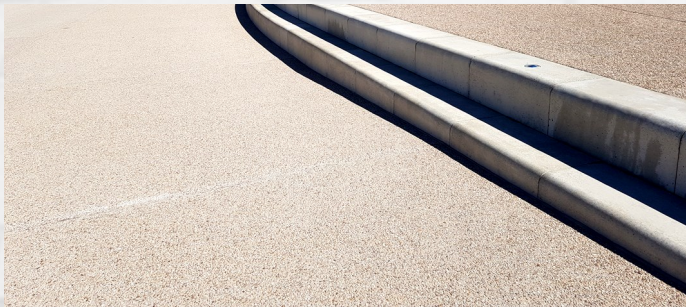


PRODUCT GUIDE

Architectural Paving Systems



2 Company Profile



PICS offer paving and walling contractors the largest range of tools, products and services in the UK.

Our comprehensive training packages are available for all our systems and are tailored to suit every type of business, regardless of size and include both theory and practical on-site installations.

The PICS range of paving and walling systems are widely specified by Commercial Clients, Architects and Landscape Designers both here in the UK and overseas. In addition, the general public are served through our large network of established quality installers and depots.

From our head office in Newbury, we design and distribute our own manufactured products across the UK. Our depots in Newbury, Sheffield and Manchester provide invaluable support and availability of products stocked locally for collection or delivery.



NEWBURY DEPOT
Unit 2
Red Shute Hill Ind. Est.
Hermitage
Newbury
RG18 9QL
Tel: 01635 202224
sales@picsuk.com

SHEFFIELD DEPOT
Unit 4
Redwood Court, Campbell Way
Dinnington
Sheffield
S25 3NQ
Tel: 01909 568189
pics.sheffield@picsuk.com

MANCHESTER DEPOT
Unit 7
Wharfside Business Park
Irlam Wharf Road, Irlam
Manchester
M44 5PN
Tel: 0161 775 7412
pics.manchester@picsuk.com



ACID

Acid Wash 25ltr

For achieving uniformity of secondary colour removal.



CM48A / CM48

Xylene Cleaning Solvent / Thinners 25ltr / 5ltr

For cleaning out sprayer units, cleaning spillages & stripping very small areas of sealer & colour washing.



ASA

Rhino Grip

Anti-slip agent for use with PICS sealers.



CM48B

Picstrip 25ltr

Heavy duty sealer stripping agent.



CM20

Monofilament Fibres 0.6kg

- 6mm fibres
- 1 bag per m³ of concrete
- Reduces surface bleed water
- Reduces surface drying / shrinkage



CM482B / CM482A

PICS Bloom 25ltr / 5ltr

Removes blooming or other whitening from solvent based acrylic sealers.



CM90AN - CM90TER

Joint Filler

Low modulus silicone for filling the top of control joints - colours that suit PICS colour surface hardeners. (For our full range of colours, please see PICS colour chart)



LIQRELAG25

Liquid Release Agent 25ltr

For internal projects where powdered release agent is not suitable.



CMRET18BLUE

Retarder Blue 18ltr 2mm

Enables 2mm surface retardation on the exposed surfaces of concrete.



RELWAS

Release Agent Wash 25ltr

To ease removal of release agent and to obtain a uniform secondary colour effect.



CMRET18ORAN

Retarder Orange 18ltr 3mm

Enables 3mm surface retardation on the exposed surfaces of concrete.



WALLGEL

Wall Gel 10kg

Brush on protection for brickwork, areas in contact with concrete coloured products. Covers approx. 22m².



PICS MARKETING	Page 4
PATTERN IMPRINTED CONCRETE (PICSPAVE)	Pages 5 - 10
PICS GENERAL SITE ANCILLARIES	Page 11
PICS TOOLS	Pages 12-22
CONCRETE TRANSFORMATION (PICSTAIN)	Page 23
BLOCK PAVING AND DRIVEWAY REFURBISHMENT	Pages 24-25
TARMAC REFURBISHMENT (PICSCOAT)	Pages 26-27
WALLS (WALLCRETE)	Pages 28-30

PICSPAVE

PPS Pattern Sample Board

Individually made to order samples which enable your client to see what a specific pattern would look like in their choice of colour surface hardener and release agent.



CSHCASELARGE / CSHCASESMALL Colour Sample Case Large / Small

A professional set of colour chips using colour surface hardener, release agent and sealer. To display finishes, in an attractive presentation case.



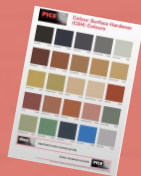
CUSTOMBRO Company Brochure

Professionally designed brochure that can be customised with your branding to create a unique company portfolio.



COLCHART Colour Chart

Displays our standard colour surface hardener range. For non-standard colour, or to match alternative colours, please contact our sales team.



PICSEAL & DRIVEWAY REFURBISHMENT

PSBLOCK1 Single Brick Display Board

1 brick sample, which enables your client to see a sealed and unsealed finish and stabilised jointing sand.



PSA5LEAFLET Picseal Canvassing Leaflet A5

- Reply card incorporated
- Ideal for mail drops
- Can be personalised for your company



PICSCOAT

PCA5AGENT Piccoat Canvassing Leaflet A5

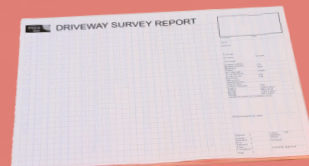
- Reply card incorporated
- Ideal for mail drops
- Can be personalised for your company



QUO1

Survey Report Pad

To record all site survey information and present your quotation in a professional manner.



MKSIGN Project Signboard

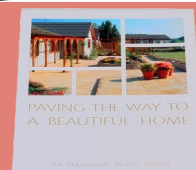
Personalised company sign boards to your design, using your company logo. For display at all of your projects.

- Pack of 20



PICBRO PICSPAVE Brochure

Professionally designed to showcase PICSPAVE applications.



SUNNS Project Name Stamp

Perfect for personalising your installations, and gaining more enquiries. The best value advertising there is.



PICSTAIN

STAINBOARD Sample Board

Displays the finish in the range of acid stain colours.



WALLCRETE

WALLCRETESAMP Pattern Sample Board

Individually made to order samples, which enables you to show your client patterns or colours of your choosing.



WALLA5 Wallcrete Canvassing Leaflet A5

- Reply card incorporated
- Ideal for mail drops
- Can be personalised for your company



CM301 - CM357

Colour Surface Hardener 25kg

Coloured dry shake topping for all pattern imprinted concrete and decorative concrete installations. Used to harden and colour the surface. (For our full range of colours, please see PICS colour chart below)



CM44A - CM44SBUFF

Colour Tints

Dry powder for use when colour washing, achieving uniformity & antiquing. (For full range of colour see PICS colour chart below)



CRC301 - CRC357

PICSCHIP Chip / Crack Repair Compound

Designed for repairing small chips, holes, openings & fissures in concrete.

- Fast setting
- In a range of colours (For our full range of colours, please see PICS colour chart below)



CHARCOAL



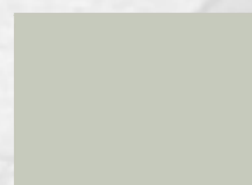
SLATE GREY



STEEL GREY



PLATINUM GREY



SILVER GREY



MAHOGANY



DEEP TAN



TUDOR BROWN



RUSTIC SANDSTONE



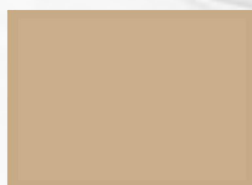
BIDEFORD BUFF



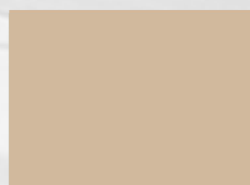
AVON STONE



PURBECK STONE



BISCUIT



SANDSTONE BUFF



DEEP RED



PLUM



TERRACOTTA



BRICK RED



CHAMPAGNE PINK



SLATE GREEN



STEADMAN BUFF



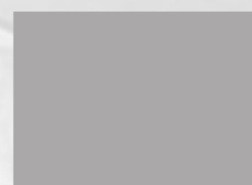
LAWN GREEN



SLATE BLUE



POOL BLUE



DOVE GREY



CM51 - CM75**Antique Release Agent 10kg**

Available in various colours. Powdered release agent to prevent imprinting mats sticking to the concrete and for producing a secondary antiqued effect. (For our full range of colours, please see PICS colour chart below)



PICS Antique Release Agent (RA) Colours

*Charcoal CM56**Classic Grey CM57**Platinum Grey CM59**Mahogany CM55**Chocolate CM58**Tan CM69**Beige CM70**Walnut CM75**Slate Green CM52**Plum CM51***CM41****High Solid Sealer (HSS) 25ltr**

Used throughout the industry for sealing pattern imprinted concrete and decorative concrete installations.

**CM39****Matt Sealer 25ltr**

A matt equivalent to high solid sealer.

**CM40****Xtraseal 25ltr**

More viscous than high solid sealer, useful in cold weather or on porous concrete.

**CM42****Low Solid Sealer (LSS) 25ltr**

A low solid equivalent of high solid sealer. Especially useful for resealing and hot weather conditions.

**CM36****Custom Seal 25ltr**

Custom seal is a more viscous alternative to xtraseal and is ideal for use in cold conditions.



CM61**Polythene - 25mu gauge**

Covers 800m² of sub-base membrane / garden. Ideal for weather protection.

**CM100****Expansion Joint Material**

Easy to use foam joint material on a roll. For isolation and expansion joints.

**FUNNEL****Heavy Duty Funnel**

For ease of filling sprayer units & avoiding spillages.

**HT512****Joint Filler Applicator Gun**

Ideal for applying joint filler into control joints.

**HT510HC****Crusader Wheelbarrow**

Heavy duty contractor grade wheelbarrow for ease of placing and moving concrete.

**HT520****10ltr Gloria Sprayer Unit**

Heavy duty sprayer. Viton seals equipped. All-round unit for sealer application.

**HT5PL12****Industry 12ltr Sprayer Unit**

Viton seals equipped. All-round unit for sealer application.

**HT528****Smiths Handheld Sprayer 1.5Ltr**

Viton seals equipped. Ergonomic handle design for maximum comfort. This smaller sprayer works well for tight coverage and spot treatments.

**HT524****Smiths Sprayer 3.5 Gallon**

Viton seals equipped. Industrial grade sprayer.

**HT527****Smiths Sprayer 2 Gallon**

General purpose light use sprayer. Ideal for homeowners.

**HT529****3 Gallon Concrete Sprayer**

Economic, robust and versatile handheld pump sprayer. 24 inch brass wand which makes it ideal for treating hard to reach areas.

**HT525****Smiths Water Supply Tank 3 Gallon**

Ideal for dust suppression when cutting expansion joints and other materials.

**HT526****Smiths Acid Sprayer 2 Gallon**

Ideal for acid spraying, contains no metal components.

**HT533****Smiths Contractor Sprayer 2 Gallon**

Viton seals equipped. Multiple use mid-range sprayer.



CM62 Shuttering Pins

- 10mm x 300mm long
- Mild steel pins to retain shuttering



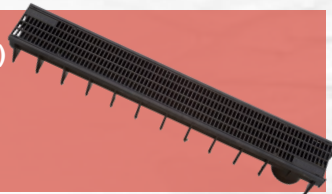
CM116 Aco Hex Drain (Shallow) 1 Metre

Lightweight, shallow, plastic unit with plastic grating.



CM81B Strip Drainage Channel (Black)

Lightweight plastic unit with plastic grating.



CM117 Aco Hex Drain Corner Unit

Turns drainage 90° or 270°.



CM65 Inset Manhole Cover

650mm x 450mm x 46mm recessed trays with integral lifting points. Ideal for PIC projects.



CM118 Aco Hex Drain Leaf Trap

Filter to prevent leaves and debris from entering into the drainage system. (Including 2 end caps)



CM73 Inset Manhole Cover

300mm x 300mm x 46mm recessed trays for inspection chambers. (For imprinted concrete)



CM106 Plastic Shuttering

95mm shuttering. 5 metres in length.



CM73A Inset Manhole Cover

450mm x 450mm x 46mm recessed trays for inspection chambers. (For imprinted concrete)



CM86A Deck Drainage Channel

Preformed plastic drainage channel, 2 metres in length.



10 PICSPAVE Site Preparation

CM102

Square Inlet Hopper

Allows rainwater and waste pipes to be connected to drainage systems.



CM111A

Underground Rodding Eye

Durable and impact resistant. Lightweight and easy to fit system.



CM102A

Square Inlet Hopper Grid

Grid only.



CM112

45° Single Socket Bend

Durable PVC with rubber seal for push-fit installation.



CM103

Rectangle Inlet Hopper

Allows rainwater and waste pipes to be connected to drainage systems.



CM113

15° Double Socket Bend

Durable PVC with rubber seal for push-fit installation.



CM104

Underground 90° Bend

Durable PVC with rubber seals for push-fit installation.



CM114

30° Double Socket Bend

Durable PVC with rubber seal for push-fit installation.



CM107

Underground Straight Connector

Durable PVC with rubber seals for push-fit installation.



CM115

45° Double Socket Bend

Durable PVC with rubber seal for push-fit installation.



CM108

Underground Tee

Pipe Junctions / Branches are used to bring two runs of underground drainage pipe together. Durable PVC with rubber seals for push-fit installation.



CM89A

Low Back P Trap With Feet

Use in conjunction with gully hoppers to allow rainwater and waste pipe to enter the drainage system.



CM105

Underground Pipe 3m Long

Multi-use PVC underground pipe with 110mm diameter.



CM110

Underground Plastic To Pot Connector

For joining non-pressure pipes of differing outer diameters and materials. Simply screw to tighten or loosen grip of pipe.



DTAPE

Barrier Tape

500m red & white danger tape to protect concrete from public access.



GLBNXL/GLBNL

Classic Blue Nitrile Gloves XL/L

Basic protection gloves. (Box of 100)



DUCTTA

Duct Tape

Heavy duty adhesive for securing polythene and other coverings.



GLONXL/GLONL

Orange Nitrile Gloves Ideal Grip XL/L

Premium protective gloves. 3 times thicker than classic gloves. Diamond texture ensures a secure grip when required. (Box of 50)



PBBUCK

Black Builders Bucket

3 gallon bucket.



HCLEAN

Lime Beaded Hand Cleaner 3ltr

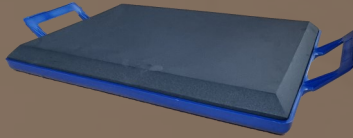
Heavy duty hand cleanser for effective cleaning action. Incorporating naturally sourced corncob grit for enhanced cleaning properties.



HT069

Kneeling Board

Light, robust pads for access across concrete with minimal retrowelling.



HCLEANCAGE

Hand Cleaner Cage

Holder allows hand cleaner to be fixed to walls. Suitable for use with 'HCLEAN'.



HT069WS

Kneeling Board With Stand

Heavy duty stand allows for maximum standing access across concrete.



HCLEANPUMP

Hand Cleaner Pump

Reusable plastic pump for use with 'HCLEAN'.



HT410

Plastic Safety Goggles

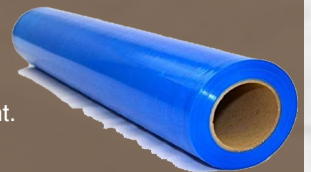
Protection for eyes against dust for example, when applying colour surface hardener & release agent.



FILM

Window Protection Film

500mm x 100m. Protects window sills from dirty hand prints, colour surface hardener and release agent.



HT435

Dust Filter Masks

Protection against dust particles when applying colour surface hardener & release agent. (Box of 50)



PRIMERPS / PRIMERPS15

PICS Primer Pro Slurry 25kg / 15kg

To seal, prime and bond natural stone, porcelain, paving slabs and other paving materials to the new bed, while installing new paved areas.



12 PICS Steel Pool Trowels

HT2285

Blue Steel Pool Trowel 16" x 4"

Round front and square backed carbon trowel. For quality finishing without trowel marks.



HT4435

Blue Steel Pool Trowel 10" x 3"

Carbon pool trowel. Ideal for small areas and contracting colour borders.



HT279

Blue Steel Pool Trowel 16" x 4"

Round ended hand trowel for quality steel finishing without trowel marks.



HT296

Blue Steel Pool Trowel 24" x 5"

Round ended hand trowel for quality steel finishing without trowel marks.



HT279BPF

Blue Steel Pool Trowel 16" x 4"

Round ended hand trowel for quality steel finishing without trowel marks. (With Proform handle)



HT213B

10" x 4" Blue Steel Pool Trowel

Round front square backed trowel. For quality steel finishing without trowel marks.



HT288

Blue Steel Pool Trowel 20" x 5"

Round front and square backed carbon trowel. For quality finishing without trowel marks.



HT733B

Blue Steel Trowel 18" x 5"

Square end trowel for quality steel finishing.



HT295

Blue Steel Pool Trowel 20" x 5"

Round ended hand trowel for quality steel finishing without trowel marks.



HT222K

Carbon Steel Cement Trowel

16" x 4" Carbon steel trowel for quality steel finishing.



HT295BPF

Blue Steel Pool Trowel 20" x 5"

Round ended hand trowel for quality steel finishing without trowel marks. (With Proform handle)



HT738BK

18" x 4" Elite Pool Trowel

For quality steel finishing without trowel marks. (With cork handle)



HT738B

Blue Steel Pool Trowel 18" x 4"

Round ended hand trowel for quality steel finishing without trowel marks.



HT658

Pool Trowel Camel Bracket

Used to attach a pool trowel to button handles.



CUTBAR

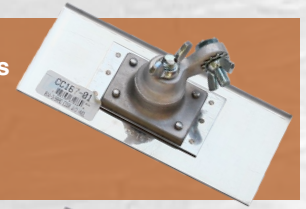
Cutting Bar 24" x 4"

Quicker than a hammer and bolster.
For soft cuts along straight pattern lines.



HT167A

Walking Edger 8" x 4" $\frac{3}{8}$ " Radius
(Edger handle and adaptors to be purchased separately)



HT125

Mini Edger

For radius edges on tight curves.



HT167B

Walking Edger 10" x 10"
(Edger handle and adaptors to be purchased separately)



HT128

Edging Trowel 6" x 3" $\frac{1}{4}$ " Radius
Fluted radius edger with flared ends for ease of use.



HT332

Handle Adaptor

To use with groovers and camel brackets.



HT169

Edging Trowel 8" x 5" $\frac{1}{8}$ " Radius
Flat radius edger. Stainless steel blade moves smoothly along edges of concrete sidewalks and slabs.



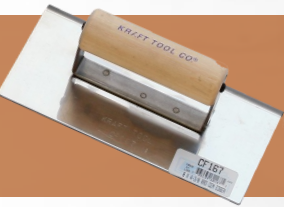
HT277

Walking Groover 8" x 8" $1\frac{1}{2}$ " Bit
For cutting control joints when concrete is still soft.



HT129

Edging Trowel 8" x 4" $\frac{3}{8}$ " Radius
Flat radius edger. Stainless steel blade moves smoothly along edges of concrete sidewalks and slabs.



HT360

Bronze Edger 9" x 4" $\frac{1}{4}$ " Radius
Durable edger for plain concrete and floating colour hardener into concrete edges.



HT168

Edging Trowel 8" x 4" $\frac{1}{4}$ " radius
Flat radius edger. Stainless steel blade moves smoothly along edges of concrete sidewalks and slabs.



HT600**Stainless Steel Edger**

12" x 5" edger $\frac{3}{8}$ " radius with $\frac{3}{4}$ " bit adjustable groover.

**HT314****Hand Groover**

6" x 4" by 1" deep x $\frac{1}{2}$ " wide. 100% bronze, cuts smooth clean grooves. (With smooth wooden handle)

**HT607****Stainless Steel Edger**

12" x 5" edger $\frac{3}{8}$ " radius with $\frac{1}{2}$ " bit adjustable groover.

**HT303****Bronze Groover**

6" x 3" by $\frac{1}{2}$ " deep x $\frac{3}{8}$ " wide. 100% bronze, cuts smooth clean grooves. (With smooth wooden handle)

**HT167****Edging Trowel**

8" x 4" edger $\frac{3}{8}$ " radius.

**HT386****Wooden Pole**

This 5' quality wooden handle features a bronze clevis. The bronze clevis provides a tight grip to clevis brackets. The clevis is attached to the smooth hardwood handle with a steel ferrule. Use with fresnos and walking tools such as curb tools, edgers and groovers.

**HT173K****Edging Trowel**

6" x 4" edger $\frac{3}{8}$ " radius. (Elite edger with cork handle) Stainless steel blade moves smoothly along edges of concrete sidewalks and slabs.

**HT299****Groover Handle 6"**

Handheld groover adapter. This short handle attaches to long-handled tools to convert them to hand tools for use in tight spaces.

**HT574K****Elite Edger**

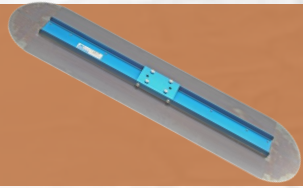
6" x 6" edger $\frac{1}{2}$ " Radius. (With Cork handle) Stainless steel blade moves smoothly along edges of concrete sidewalks and slabs.



HT750

Bulltrowel 4'

For fast finish trowelling of large areas of concrete.



HT755

Bull Trowel Weights

Weights provide extra pressure to improve the ease of trowelling.



HT270

Orbiter Tilt Bracket

The orbiter double tilt action button float bracket attaches to fresnos and 2-hole and 4-hole bull floats. The bracket is made of rugged, yet lightweight aluminium for durability.



HT294

Easy Tilt Bracket

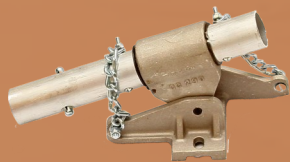
This double tilt action button float bracket attaches to fresnos or bull floats. Fits 2 or 4 hole bull floats.



HT760

Tilt Bracket

The easy tilt double tilt action button float bracket attaches to fresnos or bull floats. Fits 2 hole bull floats.



HT796

Knucklehead Tilt Float Button Bracket

This double tilt action button float bracket attaches to fresnos and both 2 hole and 4 hole bull floats. Use with 1 3/8" or 1 3/4" button bull float handles or adapters. Fits 2- or 4-hole bull floats.



HT911

Fresno Trowel Weights

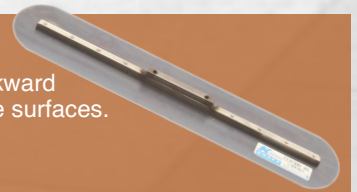
These weights provide extra pressure to improve the ease of trowelling.



HT820

Fresno Trowel 24" x 5"

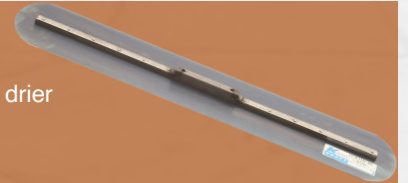
Quality finishing trowel for awkward smaller areas or drier concrete surfaces.



HT821

Fresno Trowel 30" x 5"

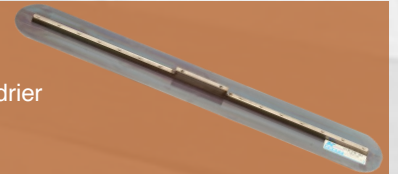
Quality finishing trowel for awkward smaller areas or drier concrete surfaces.



HT822

Fresno Trowel 36" x 5"

Quality finishing trowel for awkward smaller areas or drier concrete surfaces.



16 PICS Magnesium Floats

HT016

Mag Float 16" x 3"

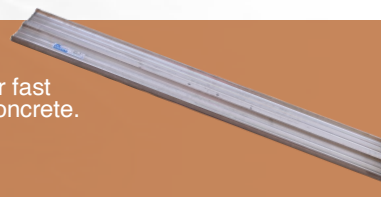
Hard wearing magnesium hand float.



HT802

Magnesium Bull Float 4'

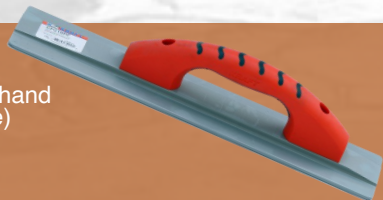
Square ended bull float, for fast floating of large areas of concrete.



HT016PF

Mag Float 16" x 3"

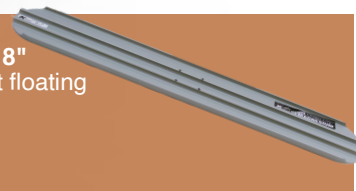
Hard wearing magnesium hand float. (With Proform handle)



HT803

Magnesium Bull Float 48" x 8"

Round ended bull float for fast floating of large areas of concrete.



HT020

Mag Float 20" x 3"

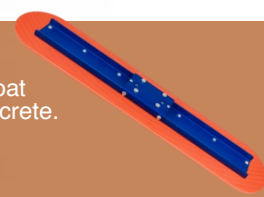
Hard wearing magnesium hand float.



HT2020RE

36" Orange Thunder Bull Float

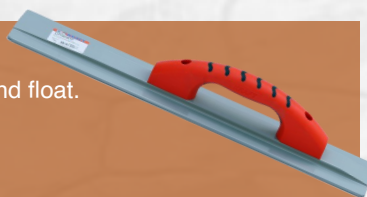
Round ended orange thunder bull float for fast floating of large areas of concrete.



HT020PF

Mag Float 20" x 3"

Hard wearing magnesium hand float. (With Proform handle)



HT942

Magnesium Bull Float Groover

Bronze tool for use in conjunction with Bull float to install soft joints.



HT076

Mag Float 16" x 3"

Round ended, hard wearing magnesium hand float.



HT2016PF

16" x 3" Mag Float

Orange thunder mag float. (With Proform Handle)



HT064K

Elite Mag Float

Square ended, hard wearing magnesium hand float. (With cork handle)



HT-GF10802H

16" x 3" Hand Float

Gator guide hand float. (With holster)



HT663PF

Mini Mag Float 7 1/2" x 3 1/4"

Hard wearing magnesium hand float ideal for small areas. (With Proform handle)



HT110H

Cobble Hand Tool H

Specialist range of pattern compatible hand tools for all areas.



HT1131

Stone Hand Tool 1"

Specialist range of pattern compatible hand tools for all areas.



HT110T

Cobble Hand Tool T

Specialist range of pattern compatible hand tools for all areas.



HT1134

Stone Hand Tool 4"

Specialist range of pattern compatible hand tools for all areas.



HT111A

G Tool

Resin cobble edging tool.



HT1138

Stone Hand Tool 8"

Specialist range of pattern compatible hand tools for all areas.



HT1121

Brick Hand Tool 1"

Specialist range of pattern compatible hand tools for all areas.



HT112

Double end "V" Jointer

$\frac{5}{8}$ " x $\frac{3}{4}$ " multi-purpose jointing tool.



HT1124

Brick Hand Tool 4"

Specialist range of pattern compatible hand tools for all areas.



HT116/4

4" Alum Chisel

Specialist range of pattern compatible hand tools for all areas.



HT1128

Brick Hand Tool 8"

Specialist range of pattern compatible hand tools for all areas.



HT117/8

8" Alum Chisel

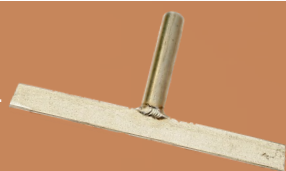
Specialist range of pattern compatible hand tools for all areas.



HT11212

Brick Hand Tool 12"

Specialist range of pattern compatible hand tools for all areas.



HT281

Rubbing Brick

8" x 3" with handle. Ideal for rubbing down squeeze-ups.

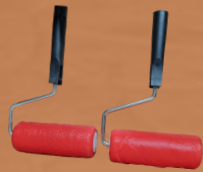


18 PICS Hand Tools

WR130-WR216

Textured Rollers

Range of textured rollers for application of texture where imprinting is difficult.



HT116

Fluffy Touch Up Roller

Useful tool designed for small repair work and open fissures during printing.



HT119

Foam Touch Up Roller

Useful tool designed for small repair work and open fissures during printing.



HT271

Rubbing Jointer

Add depth to joints & correct imperfections while imprinting.



HT986

Hammered Edge Wheel

To add a simple textured joint to the imprinting work.



SQW-3

Squeeze Up Wheel 3mm

Designed to fit 3mm imprinting mat joint sizes & remove squeeze-ups easily.



SQW6

Squeeze Up Wheel 6mm

Designed to fit 6mm imprinting mat joint sizes & remove squeeze-ups easily.



SQW9

Squeeze Up Wheel 9mm

Designed to fit 9mm imprinting mat joint sizes & remove squeeze-ups easily.



SQW12

Squeeze Up Wheel 12mm

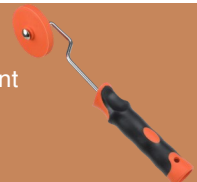
Designed to fit 12mm imprinting mat joint sizes & remove squeeze-ups easily.



HT566

Touch Up Roller

Designed to fit a $\frac{3}{16}$ " imprinting mat joint sizes & remove squeeze-ups easily.



HT567

Touch Up Roller

Designed to fit a $\frac{3}{8}$ " imprinting mat joint sizes & remove squeeze-ups easily.



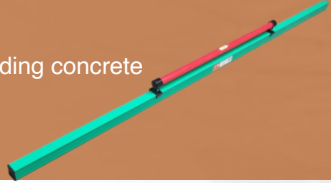
HT988 1.5m Aussie Screeder

Small screed bar for screeding concrete into place.



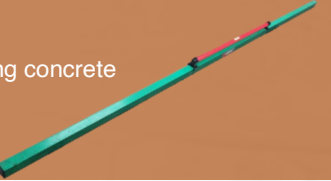
HT989 2.1m Aussie Screeder

Medium screed bar for screeding concrete into place.



HT990 3m Aussie Screeder

Large screed bar for screeding concrete into place.



HT4221 6' Buckaroo

One man straight edge for floating, screeding, and striking off concrete.



HT428L 8' Buckaroo

One man straight edge for floating, screeding, and striking off concrete.



HT425A 5' Whiskey level with handle.

Float, screed, and level concrete slabs with this easy to use straight edge.



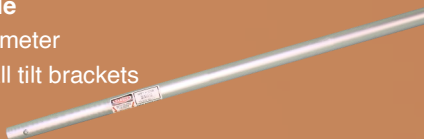
HT289 Thick Button Handle

- 6' Length x 1 3/4" diameter
- Universal clips for all tilt brackets



HT336 Slimline Button Handle

- 6' Length x 1 3/8" diameter
- Universal clips for all tilt brackets



HT289-01 Thick Button Handle Clips

Spare clips suitable for all button handles.



HT675 Handle Adaptor

To convert slimline button handles to standard button handles.



HT946 8" Roller Tamp

- Fast tamping of placed concrete
- Raises fat and depresses the aggregate
- Ideal for smaller areas



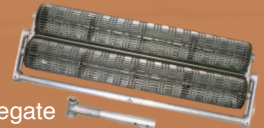
HT948B 18" Roller Tamp

- Fast tamping of placed concrete
- Raises fat and depresses the aggregate
- Ideal for smaller areas



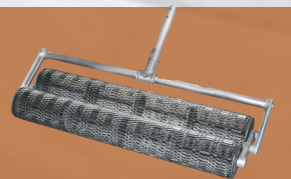
HT952 36" Roller Tamp

- Fast tamping of placed concrete
- Raises fat and depresses the aggregate



HT958 48" Roller Tamp

- Fast tamping of placed concrete
- Raises fat and depresses the aggregate



HT952-03 T-Clamp

Replacement T-clamp for roller bugs.



CSHSCOOP**Aluminium Scoop**

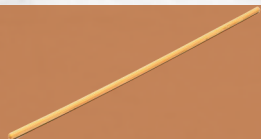
For easy application of colour surface hardener. Increased application coverage.

**HT107****Thick Rake Handle**

For use with 'HT009' & 'HT010' placer rakes.

**HT106****Thin Broom / Roller Handle**

For all soft sealing brooms.

**STURABRUSH****Stucco Release Agent Brush**

For the application of powder antique release agent.

**HT212B****12" Natural Bristle Sealing Broom**

Natural bristle head for applying sealer / working sealer into joints. Use with thin broom handle 'HT106'. (Not Included)

**HT104****10" Sealing Broom**

Coco bristle head for applying sealer / working sealer into joints. Use with thin broom handle 'HT106'. (Not included)

**HT556****24" Release Agent Sweeping Broom**

Pure bristle durable broom for removal of excess Release Agent. (Handle included)

**HT009****Specialist Concrete Rake (Steel)**

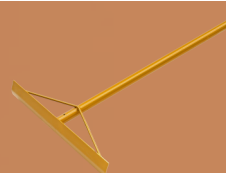
Lightweight rake designed for fast concrete placing. Use with thick rake handle 'HT107'. (Not included)

**HT010****Specialist Concrete Rake (Magnesium)**

Lightweight rake with wider head and top-toothed edge. Use with thick rake handle 'HT107'. (Not included)

**HT012****Texas Placer Rake**

Strong lightweight aluminium rake with heavy duty braces for added strength.

**HT904AF****Concrete Spreader**

19 1/2" x 4" spreader. (With fibreglass handle)

**HT901****Concrete Spreader**

Lightweight spreader designed for fast placing of concrete.

**HT925****Imprinting Mat Impactor**

Ensures imprinting mats are tamped to desired depth.

**HT928****Heavy Duty Mat Impactor**

Large rubber coated tool. Ideal for use with alloy moulds.

**HTTAMP12****12" x 12" Imprinting Mat Impactor**

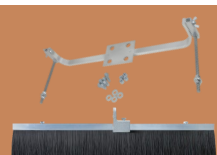
Proline, Heavy duty flexible tamp that ensures mats are tamped to desired depth.

**HT040****Diamond Blade GPX10**

Designed for use on all common types of building materials.

**HT259****48" Mag Brush**

Soft poly fibres on an aluminium base. Adapter bar allows the user to float and broom finish a slab all with one tool in one pass.



MAT DESIGNS

Reclaimed Timber Plank 12"	M-BW1237A - M-BW1275B
Reclaimed Timber Plank 16"	M-BW1668D - M-BW1696C
Reclaimed Timber Plank 8"	M-BW837A - M-BW875B
Reclaimed Timber Plank Flexi 16" x 32"	M-BWR16A
Random 6" Wood Plank	M170
Random Wood Plank Super Flex 6' x 4'	MSF180
Pacific Boardwalk 12"	M23A - M23F
Wood Paver Runningbond	M-BST7390
Wood Paver Cobble	M-BST7340
Porcelain Stone 24" x 48"	MP121
Porcelain Stone 12" x 36"	MP123
Travertine	M-AS1000A - M-AS1000C
Farmhouse Stone	M-AS1100A - M-AS1100C
Split Rubblestone 31" x 31"	MB113 - MY113
Random Stone 30" x 30"	MB6 - MY6
Extra Large Random Stone 36" x 36"	MB139 - MR139
Garden Stone 36" x 36"	M179
Old Brick Basket Weave 17" x 34"	MB8-MY8
New Brick Basket Weave 16" x 33"	M87
Old Brick Runningbond 16" x 36"	MB9 - MY9
New Brick Herringbone	M30
Old Brick Herringbone 27" x 33"	MB10 - MY10
Herringbone Slate 8" x 16"	MB11 - MY11
Basket Weave Stone 24" x 24"	M111
La Paz Slate Octagon Stone 23" x 33"	MB96 - MY96
California Weave 24" x 24"	MB7 - MR7
Santa Barbara Tile 31" x 31"	M69
York Stone 1'	M123 - M126
York Stone 2'	M121 - M124
York Stone 3'	M120
European Fan 27" x 46"	M1
French Fan Cobblestone 27" x 46"	M114
Portugal Fan 27" x 46"	M70
Old Englysh Cobblestone 22" x 57"	M43
Deep Joint Slate Cobblestone 27" x 48"	M83
Belgian Cobble 17" x 69"	M997
London Cobblestone 17" x 29"	M2
Country Cobble 21" x 41"	M998

Lakeland Cobble 41" x 21"	M999
Old World Slate Cobblestone 27" x 48"	M35
Cut Stone Cobble	M-CS350
Random Ashlar Slate 24" x 24"	MB5 - MY5
Royal Ashlar 36" x 36"	MB105 - MY105
Random Ashlar Stone 24" x 24"	MB112 - MY112
Grand Ashlar Slate 36" x 36"	MB115 - MY115
Large Ashlar Slate	MB85
Extra Large Ashlar Slate 36" x 36"	MBXL5 - MYXL5
Rotating Ashlar Roman Slate	M-AS500
La Habra Ashlar Slate 36" x 36"	MB143 - MR143
La Habra Ashlar Slate 24" x 24"	MB59 - MY59
Appian Runningbond Cobble 52" x 41"	M-SMP510
Monetary Ashlar 52" x 52"	M-SMP200A - M-SMP200B
Carmel Bluestone Ashlar 52"	M-SMP210A - M-SMP210B
Opa Locka Stone 20" x 30"	MR16 - MY16
Yorkshire Fieldstone 36" x 64"	MY996
Bavarian Castle Stone 36" x 36"	MB995 - MY995
Italian Slate Runningbond 12" x 24"	M27
Slate Runningbond 6" x 6"	M49
Sidewalk Slate 18" x 36"	MB17 - MY17
Serpentine Slate 20" x 48"	M36

TEXTURED SKINS

Blue Stone Skin 36" x 36"	M-3BL
Blue Stone Skin 20" x 20"	M-2BL
Belgium Slate Skin 36" x 36"	M-3BE
Belgium Slate Skin 20" x 20"	M-2BE
Blue Ridge Stone Skin 20" x 20"	M-2BR
Roman Slate Skin 20" x 20"	M-2RS
Caesar Stone (S,M,L)	M127 - M133
French Granite (S,M,L)	M210 - M212
Monster Slate (S,M,L)	M199 - M138
San Diego Slate (S,M,L)	M216 - M218
Shawnee Slate (S,M,L)	M213 - M215
Blue Stone (S,M,L)	M219 - M221
Arizona Sandstone (S,M,L)	M116 - M129
Wave Crete (S,M,L)	M117 - M131
Rock Salt / Coquina Stone (S,M)	M158 - M177

For our full range of patterned mats and borders, please see the PICS mat brochure.

22 PICS Imprinting Mats

FEATURE MATS

Windsor Stone Circle Inner 2'	M96
Windsor Circle Row 1 5'	M96A
Windsor Circle Row 2 8'	M96B
Windsor Circle Row 3 11'	M96C
Compass Circle 4'	M134
Pin Wheel Medallion 4'	M139
Round Cobblestone Star 4'	M136
Mariners Medallion 5'	M-MD7501
Flaming Sun	M135
Slate Cobblestone Circle 4'4"	M12
Slate Cobblestone Circle 9'	MR72
Slate Cobblestone Circle 14'	MB73
Slate Cobblestone Circle 19'	MY146

BORDER MATS

La Habra Slate Soldier Course 6" x 12"	M97
La Habra Slate Mitre 6" x 12"	M98
Slate Brick Radius 2' 4" x 8"	M37
Slate Brick 10' Radius 4" x 8"	M38
Slate Brick Mitre 4" x 8"	M39
Slate Soldier Course 4" x 8"	M20
Slate Soldier Course 7' Radius	MB75
Slate Tile Border 12" x 48"	M58
Serpentine Slate Border Tool 12" x 48"	M84
New Brick Mitre 4" x 8"	M55
New Brick Bed Course Single Grout 4" x 8"	M77
New Brick Bed Course Double Grout 4" x 8"	M78
New Brick Radius 2'	M53
New Brick Soldier Course	M31
New Brick 10' Radius	M51
Old Brick Radius 2'	M52
Old Brick Bed Course Double Grout 4" x 8"	M80
Old Brick Solider Course 6" x 12"	M29
Old Brick Mitre	M54
Old Brick Bed Course Single Grout 4" x 8"	M79
Old Englysh Cobblestone Soldier Course 5" x 7.5"	M44
Old Englysh Cobblestone Mitre 4" x 8"	M45
Lakeland Cobble Bed Course 5" x 42"	M163
Lakeland Cobble Soldier Course 10" x 42"	M162
London Cobblestone Bed Course 6" x 29"	M168

9'6" Radius Slate Soldier Course	M147
7' Radius Slate Soldier Course	MB75
4'6" Radius Slate Soldier Course	MR74
California Weave With 4" x 4" Tile $\frac{1}{4}$ " Circle	M33
California Weave With 4" x 4" Tile Insert	M34
Stone Border 12" x 44"	M99
Classic Stone 9" x 35"	MB100 - MY100
Jerusalem Stone 12" x 48"	M205
Christian Tile Mitre	M988
Christian Tile Border 14" x 45"	M152
Daisy Garland Border Art	M884
Daisy Garland Corner Accent Border Art	M884A
Acanthus Leaf Border Art	M887

SINGLE BRICK MATS

Single Slate Brick	SS1
Single Old Englysh Cobblestone Brick	SC3
Single Lakeland Cobble Brick	SC2
Single London Cobble	SC1
Joint Texture Strip	M994

For our full range of patterned mats and borders, please see the PICS mat brochure.

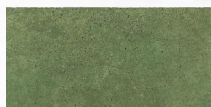
STAINT25 - STAINAB1
Mahogany 25ltr / 5ltr / 1ltr
 To change concrete colour or create enhanced features by chemical staining.
 (see colour chart for full range below)



PICSTAIN Colours



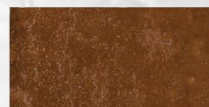
Typical Grey Concrete



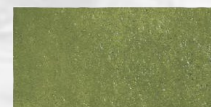
Fern F5



Aqua Blue A5



Chestnut C5



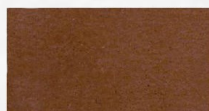
Deep Green DG5



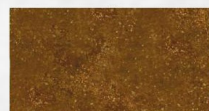
Bronze B5



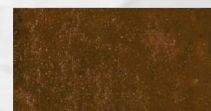
Mahogany M5



Terracotta T5



Burnt Orange BO5



Seal Brown SB5

PICSTAIN is a blend of mineral salts in a mildly acidic solution which, when applied to concrete surfaces, react with free lime to form permanent coloured surfaces without risk of peeling or flaking.

PLEASE NOTE: The grey base colour is a typical concrete colour which, when stained produces the nine PICSTAIN colours as shown. Variances in the base colour will change resulting colour effects.

HT5PL12
Industry 12ltr Viton Sprayer Unit
 For spray application of acid stain.



HT1052
2" Brush
 For acid stain applications.



STAINBRU
Picstain Brush Set
 Artist brushes for accurate acid stain application.



HT1054
4" Brush
 For acid stain applications.



Picseal 25ltr / 5ltr

Block Paving Sand

A large, light-colored bag of Sun Dried Sand. The bag is shown against a dark background. The text on the bag includes "SUN DRIED SAND" in large, bold, capital letters. Below this, in smaller text, it says "Warning", "This product must be protected from inclement weather.", "This product is for Sand Blasting use purposes covered by the Fisheries Act only.", and "Packaging should be recycled whenever possible. Do not burn." At the bottom of the bag, there is a triangular warning symbol with an exclamation mark inside, and the text "TAKE CARE WHEN LIFTING" below it.

Degreaseant 5ltr

[illegible]

Permaseal 25ltr

Cleaning Solvent / Thinners 25ltr / 5ltr



Efflorescence Remover 5ltr

EFFLORESCENCE CLEANER
FOR CONCRETE SURFACES

PRODUCT CODE EFFCLR **5lt**

DANGER

Fungicidal Wash 5ltr



PICS

MC25 / MC5 Mossclean 25ltr / 5ltr

The most effective way to kill moss and algae and will even remove the most stubborn black lichen spots from paving.



CODE PU20 / PU4 PU sealer 20kg / 4kg

Ready to apply moisture cured polyurethane coating. Designed to penetrate and stabilise the jointing sand and enhances the protected surface.



CM74 Block Paving Manhole Cover

Heavy duty block paving manhole cover. 600mm x 450mm x 80mm.



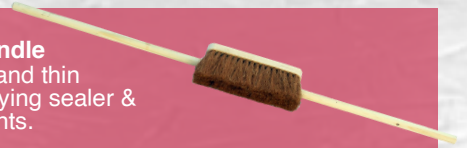
FUNNEL Heavy Duty Large Funnel

For ease of filling a sprayer unit & to avoid spillages.



HT104 & HT106 Sealing Broom & Handle

10" coco bristle head and thin broom handle for applying sealer & working sealer into joints.



HT5PL12 Industry 12ltr Viton Sprayer Unit

Viton seals equipped all-round. For sealer application.



HT520 10ltr Gloria Sprayer Unit (Viton)

Heavy duty, viton seals equipped all-round unit for sealer application.



26 PICSCOAT Ancillaries

FUNGI

Fungicidal Wash 5ltr

Removes fungal growth when maintaining existing paving.



BSDG

Degreaseant 5ltr

Breaks down oil prior to removal from concrete & block paving.



MC25 / MC5

Mossclean 25ltr / 5ltr

The most effective way to kill moss and algae. Mossclean will even remove the most stubborn black lichen spots from paving.



PICSCOAT Consumables

PC20 / PC5

Picscoat Black 20ltr / 5ltr
Tarmac refurbishment coating.



PC20RED / PC5RED

Picscoat Red 20ltr / 5ltr
Tarmac refurbishment coating.



PC20GRN / PC5GRN

Picscoat Green 20ltr / 5ltr
Tarmac refurbishment coating.



TPATCH25

Black Tarmac Drive Repair 25kg

a perfect solution for cost effective repairs to Asphalt Driveways, Paths and Potholes. It is ready to use straight from the bag.



HOMEAPP
Homeowner Application Kit (With Handle)
Roller, tray & handle for roller.



ROLREF
12" Roller
Synthetic sheepskin roller for application of primer.



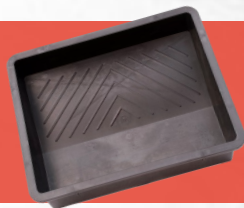
HT362
Mixing Paddle (Medium)
For mixing the Piscoat product.



WIREB
Wire Brush
For removing difficult algae, moss, roots and other stains.



ROLTRAY
17" Roller Tray
Large roller tray for ease of application of Piscoat.



MASKING
Masking Tape
For masking off areas such as manhole covers prior to applications of Piscoat.



ROLFRAM
12" Roller Frame
For use with 12" Roller. Use with thin handle 'HT104'



28 WALLCRETE Consumables

WALLBOND25 / WALLBOND5 PICS Primer 25ltr / 5ltr

To facilitate a good bond between Wallcrete and the background to be coated.



WLIQREL25 / WLIQREL5 Wall Liquid Release Agent 25ltr / 5ltr

To act as release agent when using wall imprinting mats.



WALLCRETE-A - WALLCRETE-D Wallcrete

User friendly, highly advanced lightweight render.



WPIG307 - WPIG357 Wallcrete Pigment

For adding to Wallcrete product for integral colour. (For our full range of colours, please see PICS colour chart)



WALLSEAL25 / WALLSEAL5 Wall Seal 25ltr / 5ltr

To protect the wall from the elements and enhance the colour.



WDWATER/WDWATER5 Wallcrete De-ionised Water 25ltr / 5ltr

For diluting water based wall stain to required colour.



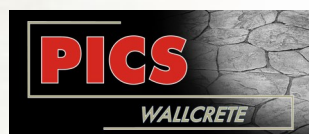
WSTAIN940 / WSTAIN120 Wall Stain 940ml / 120ml

Can be sprayed over large areas. Use a paint brush or a sponge for features such as individual stones or cobbles. (For our full range of colours, please see PICS colour chart below)



Wallcrete Stains & Dilution Rates

	5:1	6:1	7:1	8:1	9:1	10:1		5:1	6:1	7:1	8:1	9:1	10:1
Black							Ocean Blue						
Dark Chocolate							Desert Sand						
Antique Grey							Yellow Ochre						
Red							Yellow						
White							Nutmeg						



IMPRINTING MATS

Deep Textured Dry Stack	WMS01
Southern Ledge Stone	WMS02
Mountain Dry Stack	WMS03
Ashlar Stone	WMS04
Old Cobblestone	WMS05
Random Stone	WMS06
Cobblestone	WMS07
Mediterranean	WMS08
Vineyard	WMS09
Castlestone	WMS10

TEXTURED SKINS

Bath Stone Wall Mat 24" x 20"	WM130
Bath Stone Pancake 10" x 10"	WP130
Cotswold Stone Wall Mat 24" x 20"	WM132
Cotswold Stone Pancake 10" x 10"	WP132
York Stone Wall Mat 24" x 20"	WM199
York Stone Pancake 10" x 10"	WP199
Purbeck Stone Pancake 10" x 10"	WP200
French Granite Wall Mat 24" x 20"	WM210
French Granite Pancake 10" x 10"	WP210
Welsh Slate Wall Mat 24" x 20"	WM213
Welsh Slate Pancake 10" x 10"	WP213
Travertine Textured Skin 600mm x 600mm	WM214
Travertine Textured Skin 900mm x 900mm	WM215
Limestone Textured Skin 600mm x 600mm	WM216
Limestone Textured Skin 900mm x 900mm	WM217

Wallcrete Stains & Dilution Rates

	5:1	6:1	7:1	8:1	9:1	10:1		5:1	6:1	7:1	8:1	9:1	10:1
Olive Green							Terracotta						
Moss Green							Fawn						
Green							Sandstone						
Bark Brown							Honey						
Amber													

For our full range of patterned mats and borders, please see the PICS mat brochure.

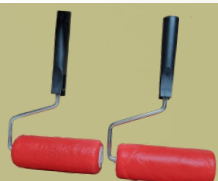
HT362
Mixing Paddle (Medium)
For mixing Wallcrete.



HT362L
Mixing Paddle (Large)
For mixing Wallcrete.



WR130-WR216
Wallcrete Textured Rollers
12" wide range of textured rollers to match the Wallcrete pancakes and textured skins.



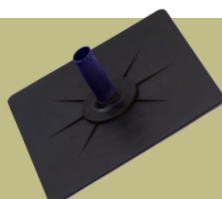
WCT
Wallcrete Carving Tool Set Light Duty
Complete set for removing squeeze ups and enhancing joints. (Pack of 6)



WCTHD
Wallcrete Heavy Duty Carving Tool
The must have carving tool for any Wallcrete installation.



WHAWK
Wallcrete 330 x 330 Hawk
For use when placing Wallcrete.



WBCT
Wallcrete Brick Carving Tool
For removing squeeze ups and enhancing joints with brick effect.



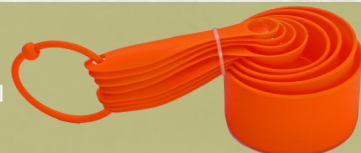
WJUG1
1ltr Measuring Jug
For the accurate measurement of Wallcrete products.



WJUG2
2ltr Measuring Jug
For the accurate measurement of Wallcrete products.



WMCUP
Measuring Cups
For measurement of the Wallcrete integral colour wall pigment.



WSCRATCH
Wallcrete Scratch Tool
To create a scratch coat.



WTROW
Wallcrete Trowel
For applying Wallcrete.



NEWBURY HEAD OFFICE

Unit 4 Red Shute Hill Industrial Estate
Hermitage
Newbury
RG18 9QL
Tel: 01635 202224
sales@picsuk.com
Opening Hours: Mon-Fri 08:00-18:00



NEWBURY DEPOT

Unit 2 Red Shute Hill Industrial Estate
Hermitage
Newbury
RG18 9QL
Tel: 01635 744431
sales@picsuk.com
Opening Hours: Mon-Fri 08:30-17:30



SHEFFIELD DEPOT

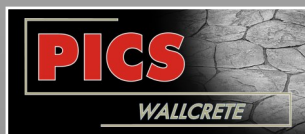
Unit 4 Redwood Court
Campbell Way, Dinnington
Sheffield
S25 3NQ
Tel: 01909 568189
pics.sheffield@picsuk.com
Opening Hours: 07:30-17:00



MANCHESTER DEPOT

Unit 7
Wharfside Business Park
Irlam Wharf Road, Irlam
Manchester
M44 5PN
Tel: 0161 7757412
pics.manchester@picsuk.com
Opening Hours: 07:30-17:00





Unit 2 & 4 Red Shute Hill Industrial Estate

Hermitage

Newbury

RG18 9QL

Tel: 01635 202224

Email: sales@picsuk.com | Web: www.picsuk.com



Colours and photography are shown as a guide only. As we are constantly improving our product range, we reserve the right to make changes without prior notice. These details do not form any contract and whilst every effort is made to ensure accuracy, this cannot be guaranteed. All pictures and text remain the property of PICS Ltd and should not be reproduced without our permission. Effective from January 2023.