



XT Stair Edgings

Additional Profiles and Finishes

GRADUS

The Ultimate Stair Edging Solution...



Contents

4. Gradus XT Range

Overview
NBS Source

5. Developed in line with the latest guidance...

BRE - Research and Guidelines
BS 8300-2:2018
The Building Regulations 2010 - Approved Document M (ADM)

6. XT Bronze Stair Edgings

Channel finishes
Insert options
Bronze Stair Edgings

10. XT Aluminium Stair Edgings

Channel finishes
Insert options
Aluminium Stair Edgings

16. Associated Products for Stairs & Floors

Welded Corners with TC1 Clips
Welded Corners with Fixed Flange
Welded Corners with TC3 Clips
Nap Trims

16. Gradus Grip GG290 - Stair Edging Adhesive

17. FREE Measuring Service

17. Fabrication Service

17. Light Reflectance Values (LRVs) and NCS References

18. A Fusion of Products

Gerflor and Gradus offer products which are ideal for use in a wide variety of applications including hospitality & leisure, residential developments, retail and commercial office.

Gradus XT Range

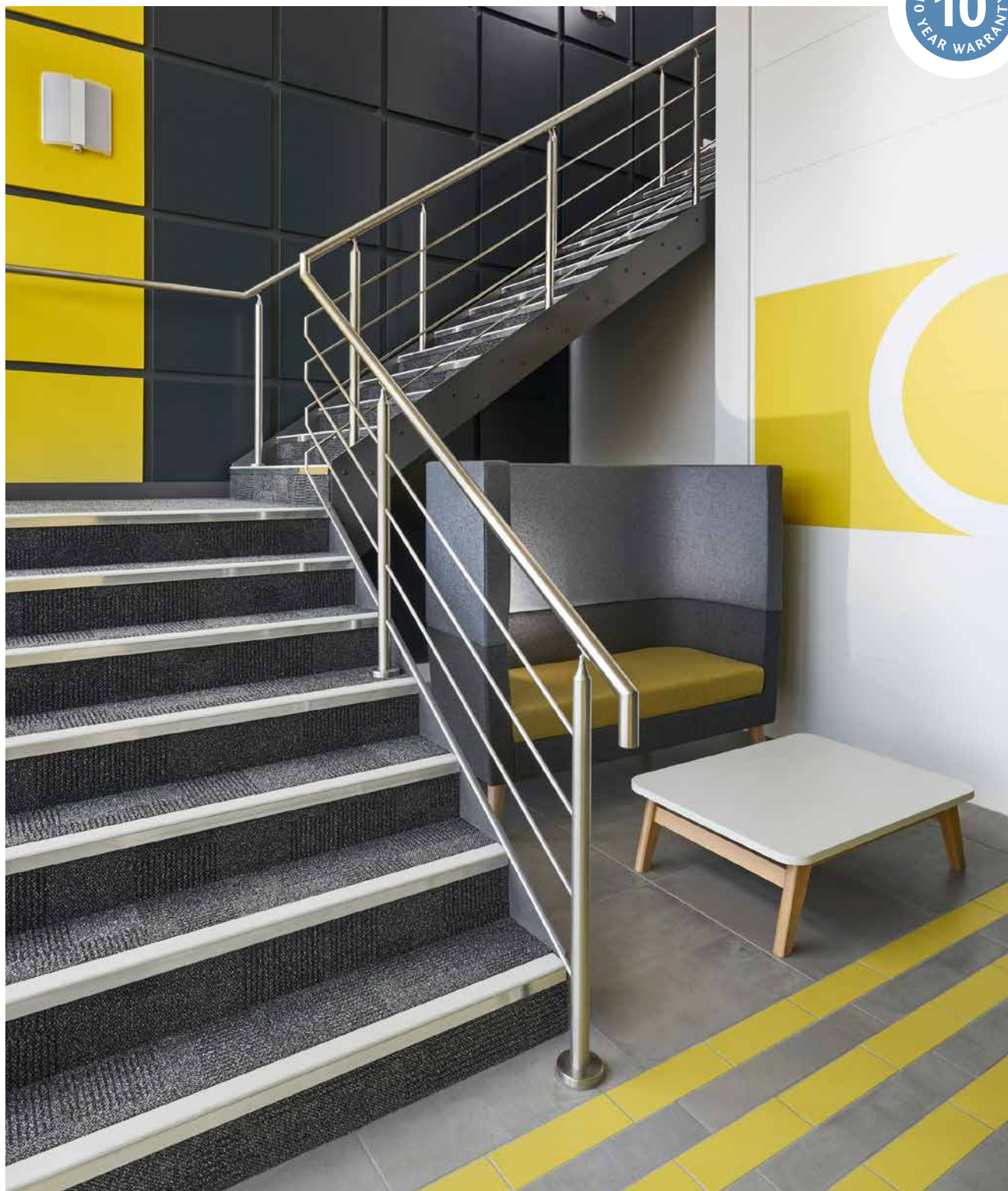
Gradus XT is the ultimate stair edging solution, combining maximum safety, performance and aesthetics to reduce the risk of slips, trips and falls on stairs. **There is no equal.**

The introduction of our new XT Bronze profiles, new metal inserts, in addition to an enhanced range of finishes available across existing XT Aluminium profiles, offers an ideal solution for luxury hospitality & high-end residential applications.



NBS Source
PARTNER

Product specification data, product literature and BIM objects for our full XT range are available on NBS Source.



Developed in line with the latest guidance...

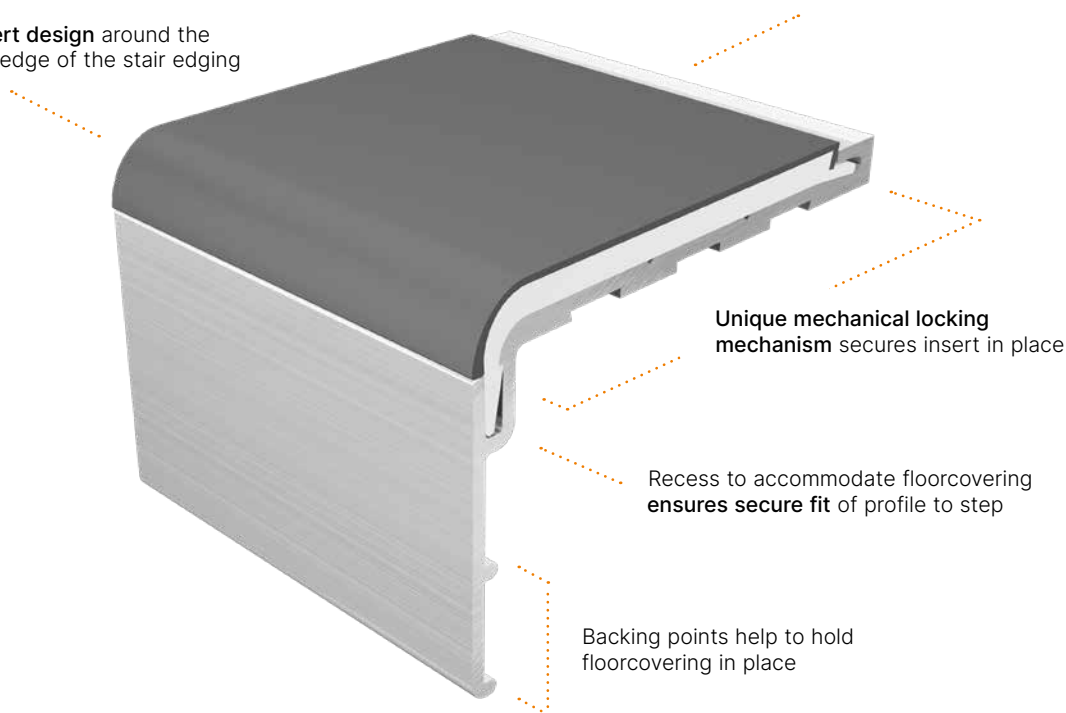
Supported by recommendations from **BRE** and the guidance contained within **BS 8300-2:2018** and **Approved Document M (ADM) of the Building Regulations 2000**, building owners and specifiers can choose Gradus XT safe in the knowledge that it offers the ultimate solution in product design and performance to protect all groups of building users.

The Gradus XT range features a unique insert design that extends around the entire leading edge of the stair edging to ensure that foot contact is always made with the slip-resistant element of the stair edging. This is in line with the recommendations published within **BRE (IP 15/03)** information paper, which provides guidance to designers and building managers selecting stair edgings for non-domestic stairs.



Ideal for use with **Gradus Grip (GG290)** ultra strong stair edging adhesive, see page 16

Extended insert design around the entire leading edge of the stair edging



Unique mechanical locking mechanism secures insert in place

Recess to accommodate floorcovering ensures secure fit of profile to step

Backing points help to hold floorcovering in place

Guidance within BS 8300-2:2018 also states that 'The whole tread or the nosing should incorporate slip-resistant material, starting as close as practicable to the front edge of the nosing and extending the full width of the tread' (see diagram opposite).

Slip-resistance is further enhanced by a comprehensive choice of inserts and colours across our XT range, with options available to suit both dry and wet interior conditions. All our inserts are fully tested and achieve a **Pendulum Test Value of greater than 36**, which satisfies the requirements of BS 8300-2:2018.

The wide choice of insert colours & finishes **enable designers to achieve suitable colour contrast** with the surrounding floorcoverings in line with the guidance in ADM and BS 8300-2:2018.

All Gradus products have been measured for Light Reflectance Values to ensure that sufficient contrast is achieved.

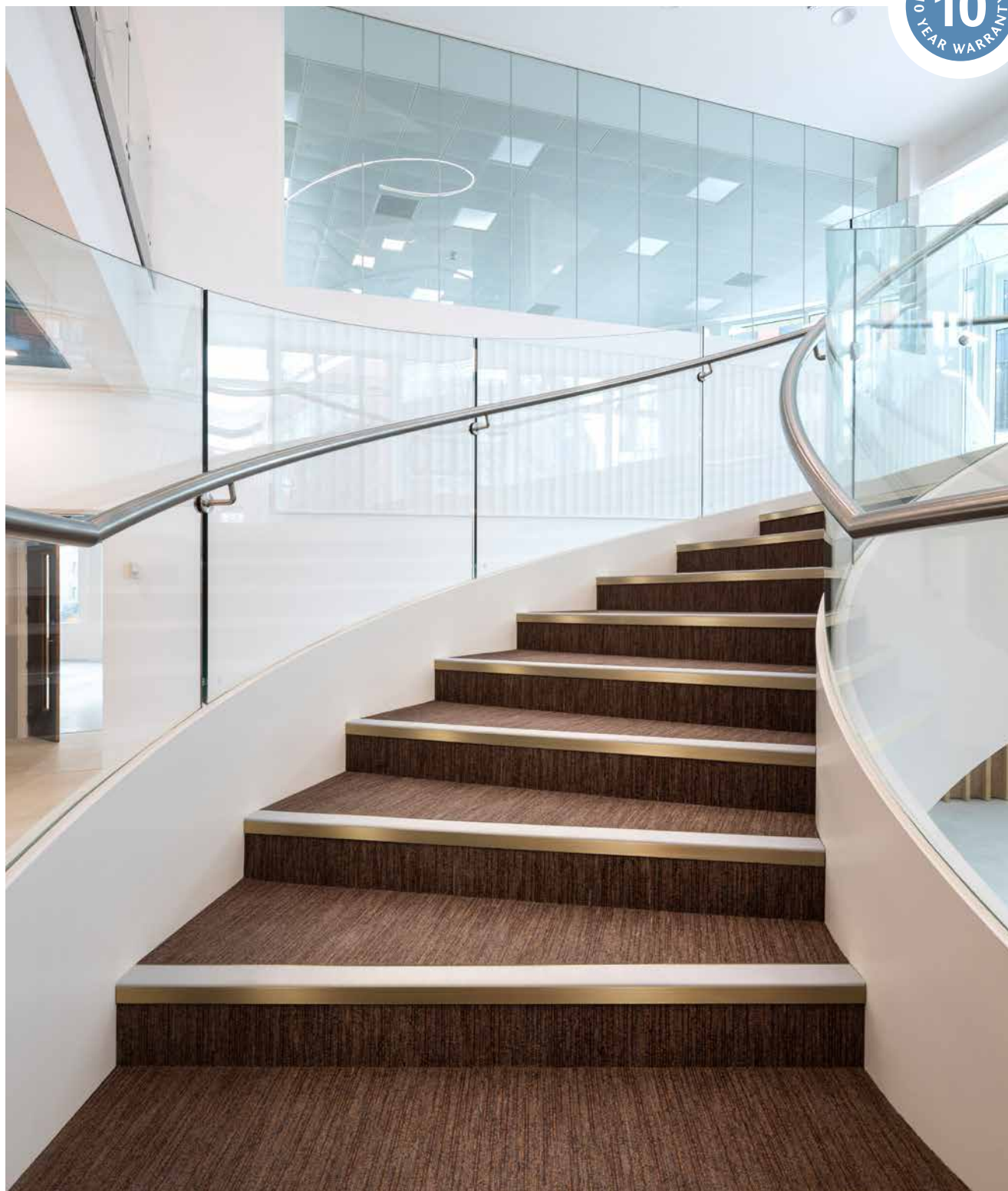


XT Bronze Stair Edgings

Our new XT Bronze stair edging range features Bronze channels available in Polished Bronze or Satin Bronze finishes. In addition to our Standard Interior finish and Xtra-grip inserts, we now offer metal castellated inserts that can be selected in a finish to match the channel or combined with a choice of contrasting finishes to create a unique look.

XT Bronze features all the existing benefits of XT including an extended insert design and insert locking mechanism, as illustrated on page 5.

Profiles are available in popular configurations to suit a variety of floorcoverings and step shapes.



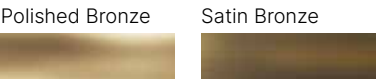
Channel and insert options



NEW

Bronze channel finishes

Our Polished Bronze finish creates a sleek appearance, whilst Satin Bronze offers a matt finish that features a subtle brushed effect.



3x Insert options



Interior Standard Finish

Conditions: Interior Dry
Material: Pvc with mineral inclusion

Areas where there is no risk that the stairs will be contaminated by moisture.



Xtra-grip

Conditions: Interior Dry / Interior Wet
Material: Pvc with mineral aggregate

Increased surface roughness where the stair edging may become wet e.g. stairs close to entrances.



NEW

Metal Castellated

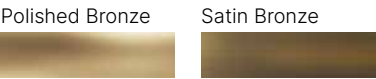
Conditions: Interior Dry / Interior Wet
Material: Bronze or aluminium

Provides an all-metal solution that features a castellated design.

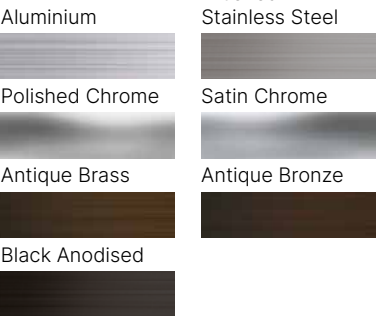
Jet	Ink
► Evergreen	► Teal
Burgundy	► Ocean
► Spice	Coffee
Lead	► Bronze
Steel	► Linen
Glacier	Canvas
Wisp	Clay
Sky	Buttercup
Jade	Snowdrift

Onyx	Neptune
► Forest	► Aegean
► Claret	► Baltic
► Chestnut	Umber
Graphite	► Sepia
Quarry	► Tuscan
Concrete	Pumice
Surf	Ochre
Bamboo	Frost

Bronze:



Aluminium:



► New - Stock available January 2024

For Light Reflectance Values (LRVs) and NCS references see page 17.

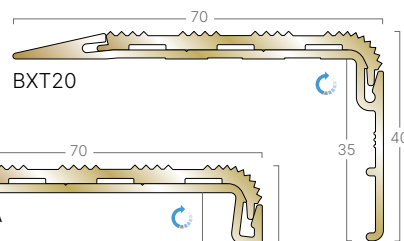
Finishes depicted are representative only and are subject to print interpretation.

For accurate referencing, request a free sample by calling Gradus Technical Support on 01625 428922.

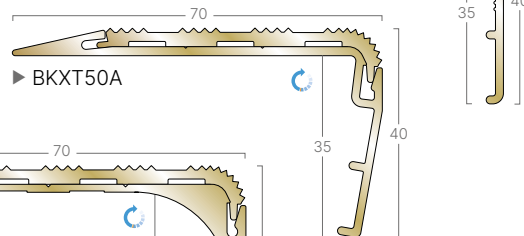
XT Bronze Stair Edgings



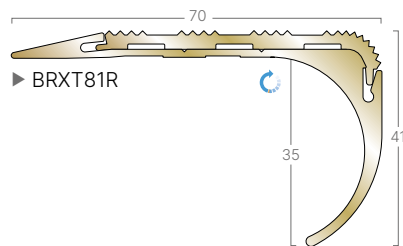
BXT20
shown with Polished Bronze
channel and insert



BXT20

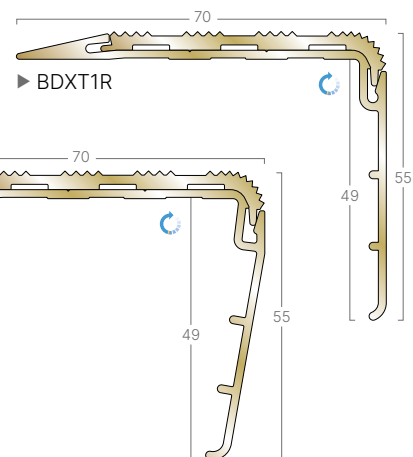


► **BKXT50A**

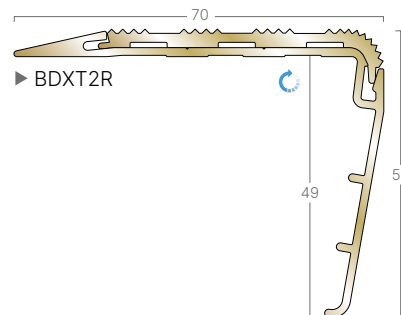


► **BRXT81R**

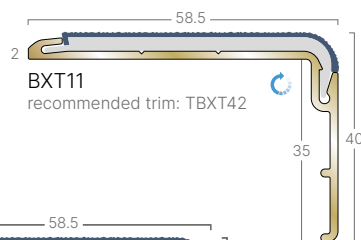
BIM Available to download as BIM objects.
Visit www.gradus.com



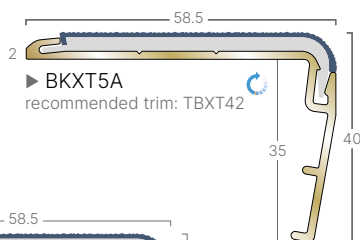
► **BDXT1R**



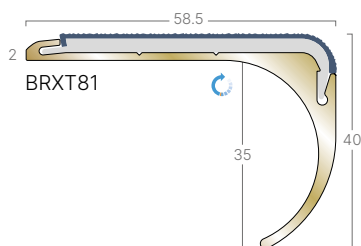
► **BDXT2R**



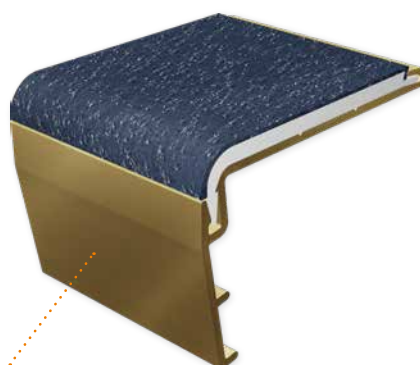
BXT11
recommended trim: TBXT42



► **BKXT5A**
recommended trim: TBXT42



BRXT81



BKXT5A
shown with Polished Bronze channel
and Xtra-grip Neptune insert



Curving option available in original XT
subject to approval of template

Visit: www.gradus.com
for full details

Dimensions shown are nominal
Illustrations are 70% size in mm

► New - Stock available
January 2024

Channel options:

Insert options:

Metal finishes:

- Polished Bronze
- Satin Bronze

Metal Castellated:

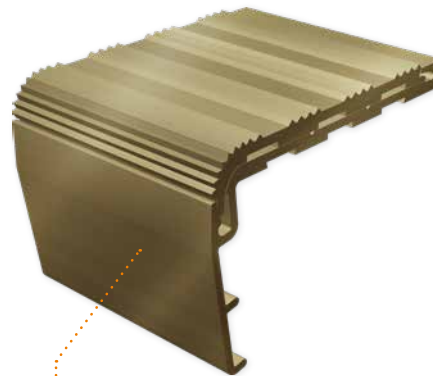
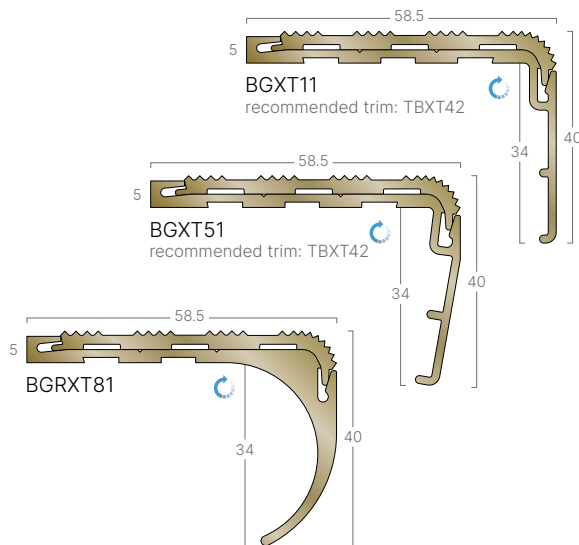
- Polished Bronze
- Satin Bronze
- Aluminium
- Brushed Stainless Steel
- Polished Chrome
- Satin Chrome
- Antique Brass
- Antique Bronze
- Black Anodised

Xtra-grip:

- Onyx
- Neptune
- Baltic
- Aegean
- Forest
- Graphite
- Quarry
- Concrete
- Surf
- Bamboo
- Claret
- Chestnut
- Umber
- Sepia
- Tuscan
- Pumice
- Ochre
- Frost

Interior Standard Finish:

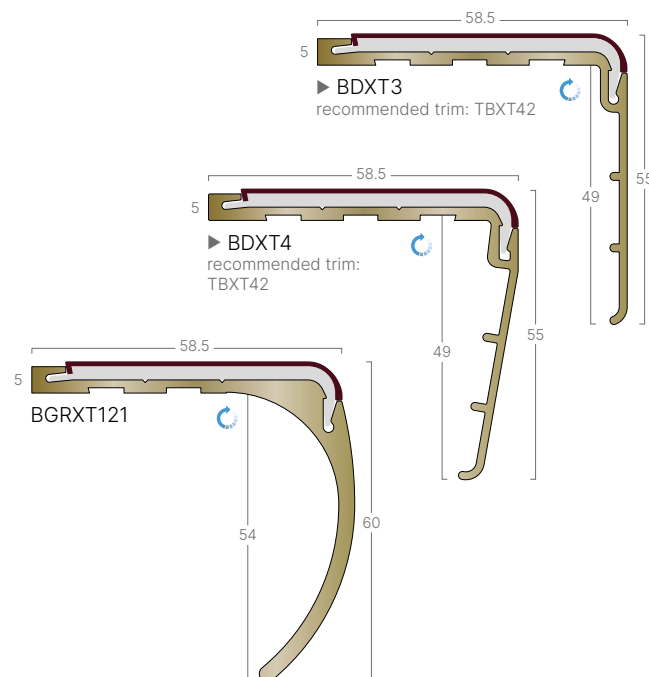
- Jet
- Ink
- Ocean
- Teal
- Evergreen
- Lead
- Steel
- Glacier
- Wisp
- Sky
- Clay
- Jade
- Burgundy
- Spice
- Coffee
- Bronze
- Linen
- Canvas
- Buttercup
- Snowdrift



BGXT51
shown with Satin Bronze
channel and insert



BGRXT121
shown with Satin Bronze channel
and Interior Burgundy insert



Gauge	Ramp - typically used with resilient flooring or where no surface floorcoverings are used 2mm - typically used with resilient flooring 5mm - typically used with carpet or resilient flooring with bevelled underlay
Trims	For recommended trims see individual profiles.
Colour	For larger colour swatches see page 7 Light Reflectance Values (LRVs) and NCS references see page 17
Samples	For an accurate profile finish or insert colour reference, request a free sample today by calling Gradus Technical Support on 01625 428922

XT Aluminium Stair Edgings

When it comes to safety and performance our XT Aluminium stair edgings offer the ultimate solution, but this doesn't mean that design flexibility within projects needs to be compromised. We have now taken our XT Aluminium range to the next level with the introduction of several new premium profile finishes, a new metal castellated insert available in corresponding finishes, plus we've added a selection of new

colours to our XT Standard Interior finish & Xtra-grip insert offering, which will appeal to luxury hospitality and high-end residential projects.

These additional options are available across all 26 of our existing XT Aluminium profiles.

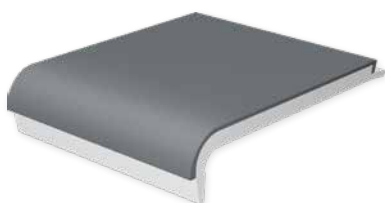


Channel and insert options



7x Channel finishes

3x Insert options



Interior Standard Finish

Conditions: Interior Dry
Material: Pvc with mineral inclusion

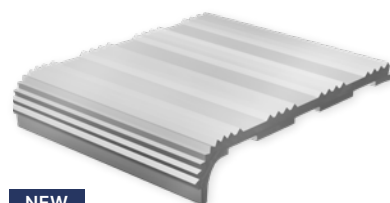
Areas where there is no risk that the stairs will be contaminated by moisture.



Xtra-grip

Conditions: Interior Dry / Interior Wet
Material: Pvc with mineral aggregate

Increased surface roughness where the stair edging may become wet e.g. stairs close to entrances.



Metal Castellated



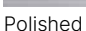
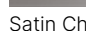


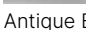
Conditions: Interior Dry / Interior Wet
Material: Aluminium or bronze

Provides an all-metal solution that features a castellated design.

Jet	Ink
▶ Evergreen	▶ Teal
Burgundy	▶ Ocean
▶ Spice	Coffee
Lead	▶ Bronze
Steel	▶ Linen
Glacier	Canvas
Wisp	Clay
Sky	Buttercup
Jade	Snowdrift

Onyx	Neptune
▶ Forest	▶ Aegean
▶ Claret	▶ Baltic
▶ Chestnut	Umber
Graphite	▶ Sepia
Quarry	▶ Tuscan
Concrete	Pumice
Surf	Ochre
Bamboo	Frost

Aluminium:

Aluminium	Brushed Stainless Steel
	
Polished Chrome	Satin Chrome
	
Antique Brass	Antique Bronze
	
Black Anodised	
	

Bronze:

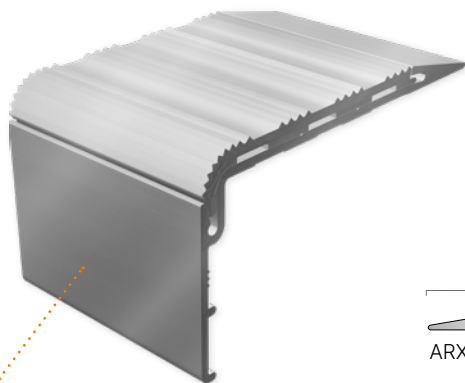
► New - Stock available January 2024

For Light Reflectance Values (LRVs) and NCS references see page 17.

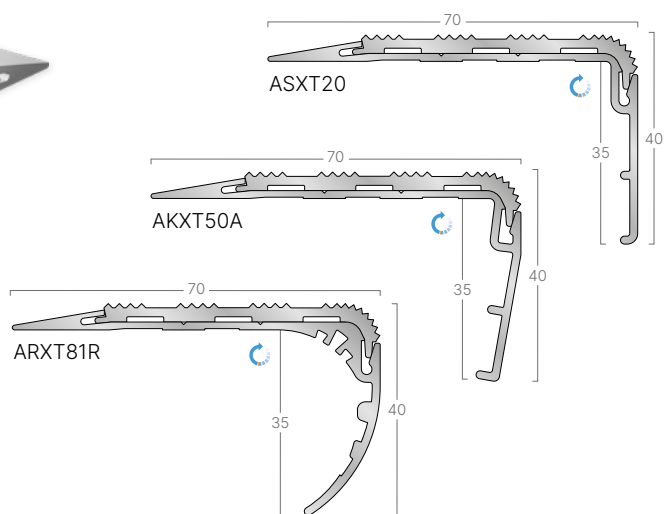
Finishes depicted are representative only
and are subject to print interpretation.

For accurate referencing, request a free sample by calling Gradus Technical Support on 01625 428922.

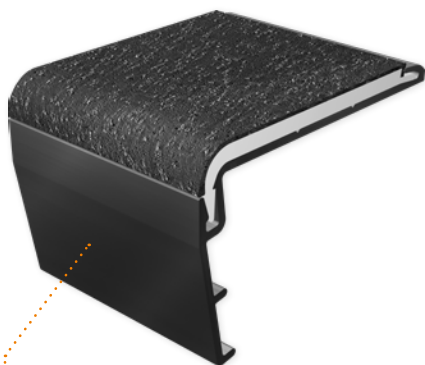
XT Aluminium Stair Edgings



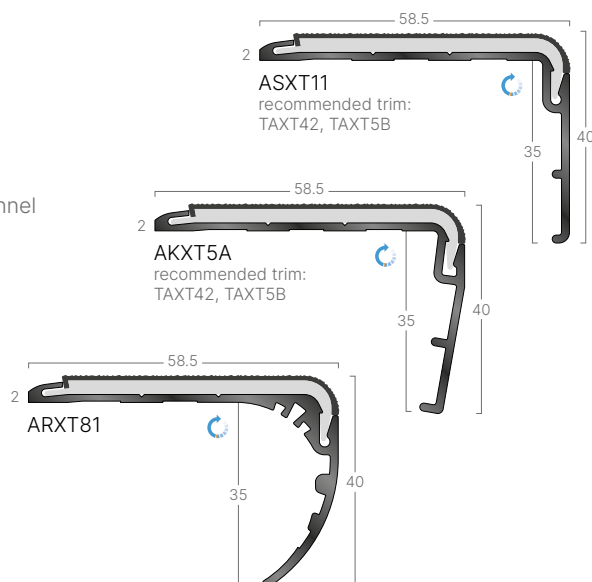
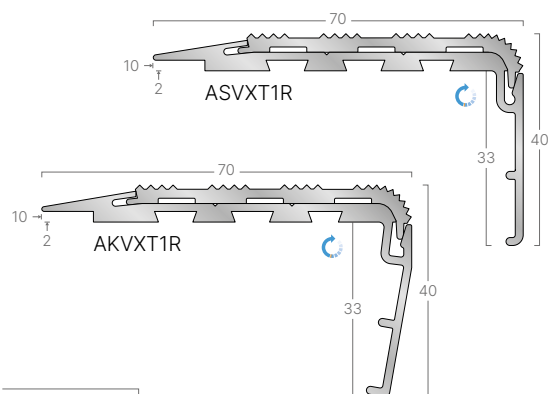
ASXT20
shown with Aluminium
channel and insert



BIM Available to download as BIM objects.
Visit www.gradus.com



AKXT5A
shown with Black Anodised channel
and Xtra-grip Onyx insert



Curving option available in original XT
subject to approval of template

Visit: www.gradus.com
for full details

Dimensions shown are nominal
Illustrations are 70% size in mm

► New - Stock available
January 2024

Channel options:

Insert options:

Metal finishes:

- Aluminium
- Brushed Stainless Steel
- Polished Chrome
- Satin Chrome
- Antique Brass
- Antique Bronze
- Black Anodised

Metal Castellated:

- Aluminium
- Brushed Stainless Steel
- Polished Chrome
- Satin Chrome
- Antique Brass
- Antique Bronze
- Black Anodised
- Polished Bronze
- Satin Bronze

Xtra-grip:

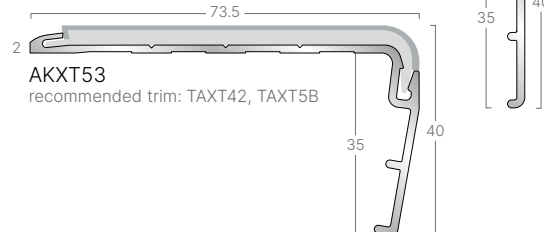
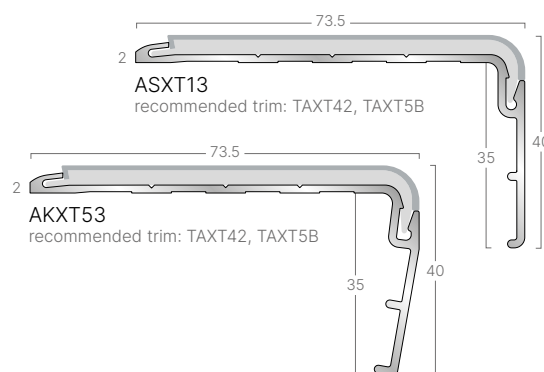
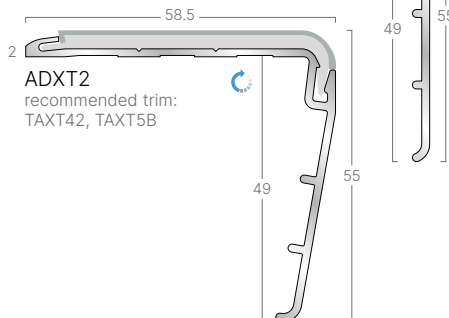
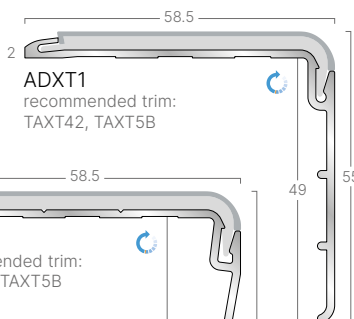
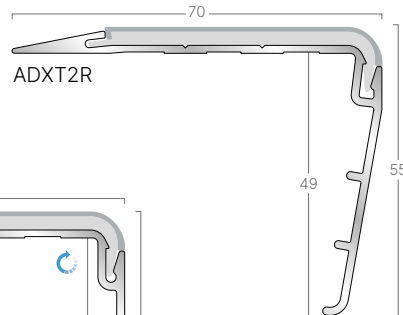
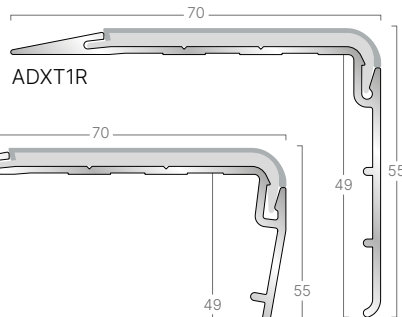
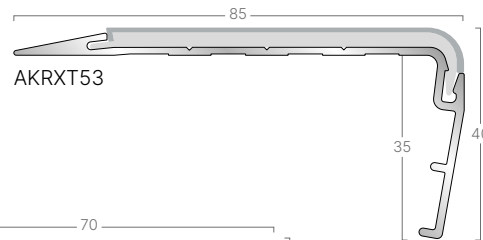
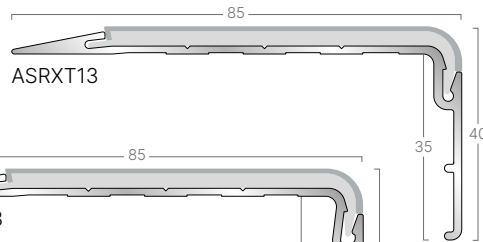
- Onyx
- Neptune
- Baltic
- Aegean
- Forest
- Graphite
- Quarry
- Concrete
- Surf
- Bamboo
- Claret
- Chestnut
- Umber
- Sepia
- Tuscan
- Pumice
- Ochre
- Frost

Interior Standard Finish:

- Jet
- Ink
- Ocean
- Teal
- Evergreen
- Lead
- Steel
- Glacier
- Wisp
- Sky
- Clay
- Jade
- Burgundy
- Spice
- Coffee
- Bronze
- Linen
- Canvas
- Buttercup
- Snowdrift

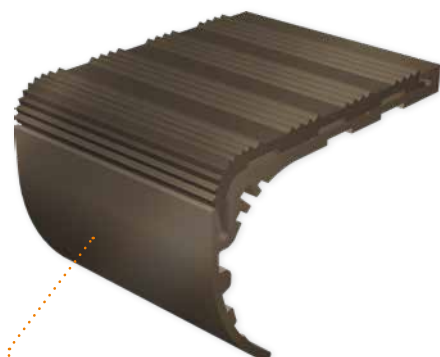


ADXT2R
shown with Polished Chrome
channel and Interior
Steel insert

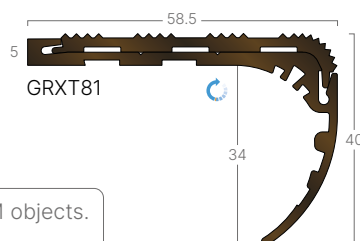
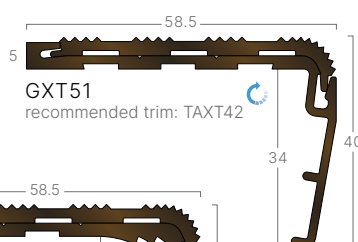
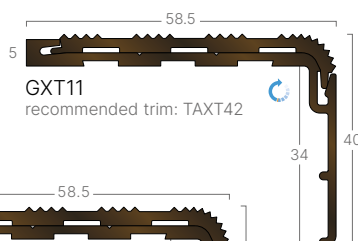


Gauge	Ramp - typically used with resilient flooring or where no surface floorcoverings are used Notched Ramp - Designed to overlay 2mm vinyl 2mm - typically used with resilient flooring
Trims	For recommended trims see individual profiles.
Colour	For larger colour swatches see page 11 Light Reflectance Values (LRVs) and NCS references see page 17
Samples	For an accurate profile finish or insert colour reference, request a free sample today by calling Gradus Technical Support on 01625 428922

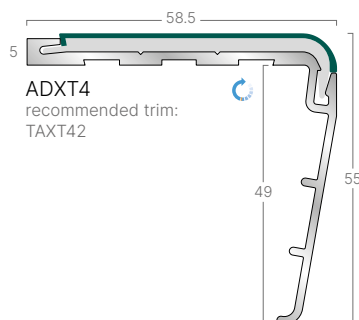
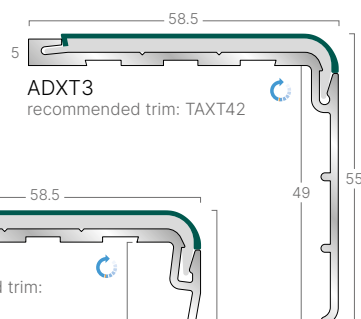
XT Aluminium Stair Edgings



GRXT81
shown with Antique Brass
channel and insert



BIM Available to download as BIM objects.
Visit www.gradus.com



ADXT3
shown with Satin Chrome channel
and Interior Evergreen insert



XT PVC-u Hardnose range also available.
Visit www.gradus.com



Curving option available in original XT
subject to approval of template

Visit: www.gradus.com
for full details

Dimensions shown are nominal
Illustrations are 70% size in mm

► New - Stock available
January 2024

Channel options:

Insert options:

Metal finishes:

- Aluminium
- Brushed Stainless Steel
- Polished Chrome
- Satin Chrome
- Antique Brass
- Antique Bronze
- Black Anodised

Metal Castellated:

- Aluminium
- Brushed Stainless Steel
- Polished Chrome
- Satin Chrome
- Antique Brass
- Antique Bronze
- Black Anodised
- Polished Bronze
- Satin Bronze

Xtra-grip:

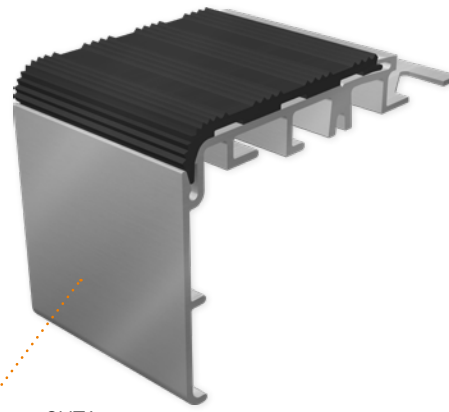
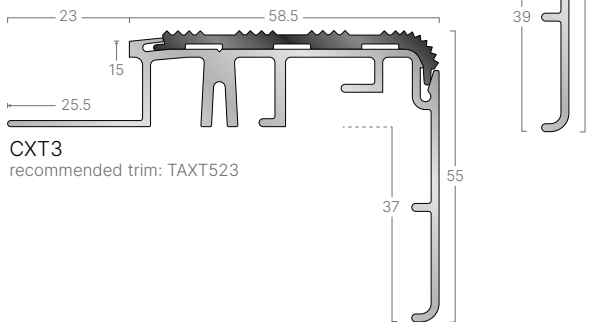
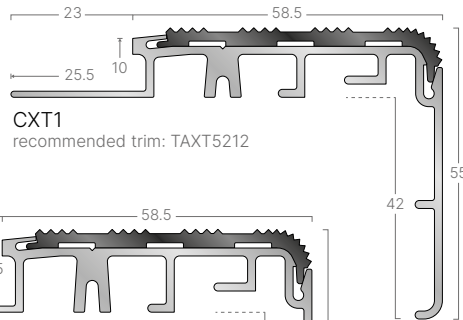
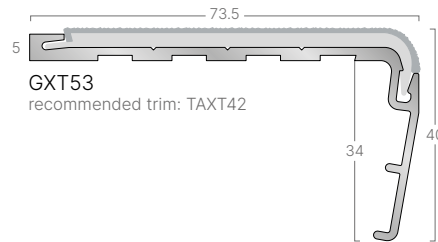
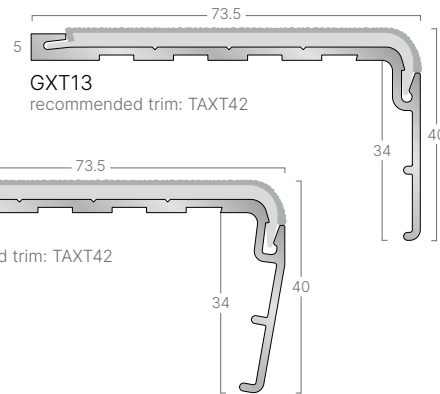
- Onyx
- Neptune
- Baltic
- Aegean
- Forest
- Graphite
- Quarry
- Concrete
- Surf
- Bamboo
- Claret
- Chestnut
- Umber
- Sepia
- Tuscan
- Pumice
- Ochre
- Frost

Interior Standard Finish:

- Jet
- Ink
- Ocean
- Teal
- Evergreen
- Lead
- Steel
- Glacier
- Wisp
- Sky
- Clay
- Jade
- Burgundy
- Spice
- Coffee
- Bronze
- Linen
- Canvas
- Buttercup
- Snowdrift



GXT53
shown with Brushed
Stainless Steel channel and
Xtra-grip Quarry insert

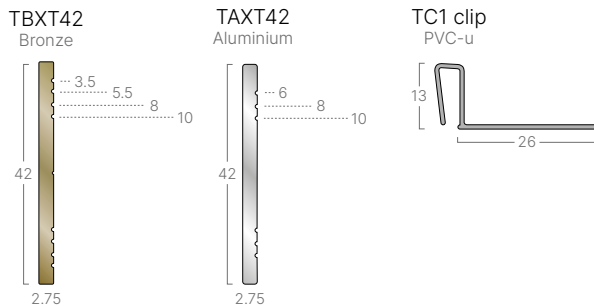


CXT1
shown with Aluminium channel
and Black Anodised insert

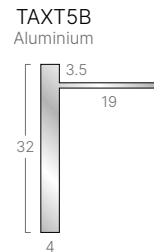
Gauge	5mm - typically used with carpet or resilient flooring with bevelled underlay 10mm - 15mm - typically used with ceramics, stone and marble.
Trims	For recommended trims see individual profiles.
Colour	For larger colour swatches see page 11 Light Reflectance Values (LRVs) and NCS references see page 17
Samples	For an accurate profile finish or insert colour reference, request a free sample today by calling Gradus Technical Support on 01625 428922

Associated Products for Stairs & Floors



Welded Corners with TC1 Clips










Welded Corner with Fixed Flange



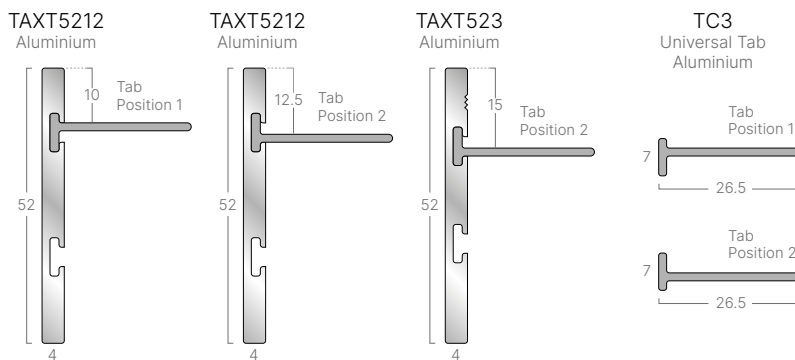
Bronze trim finishes:

- Satin Bronze 
- Polished Bronze 

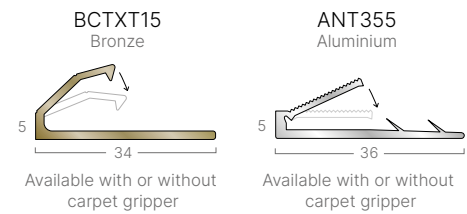
Aluminium trim finishes:

- Aluminium 
- Brushed Stainless Steel 
- Polished Chrome 
- Satin Chrome 
- Antique Brass 
- Antique Bronze 
- Black Anodised 

Welded Corners with TC3 Clips



Nap Trims



Gradus Grip GG290 - Stair Edging Adhesive

A secure bond between the stair edging and the step is essential to ensuring a safe installation.

Gradus Grip is a solvent free rapid curing flexible adhesive with excellent gap filling properties that is suitable for bonding stair edgings to most solid surfaces.

Why choose Gradus Grip:

- > **Saves time & money** - quick and easy installation
- > **10 year warranty** - on both the Gradus stair edging and Gradus Grip
- > **No more screw head cover plugs** - improved aesthetic and easier to maintain
- > **Ultra strong bond** - complete peace of mind

The stair edging, insert format, type and condition of the substrate and the application will affect the installation method required. Installation instructions are available to download at www.gradus.com.



FREE Measuring Service

Eliminate risk by arranging for a **FREE*** and accurate stair edging measure with Gradus

- > Save time > Save money
- > Reduces Waste > Avoids Errors

For further details or to **book a measure**, call Gradus Technical Support on 01625 428922.

*UK mainland only.



Fabrication Service

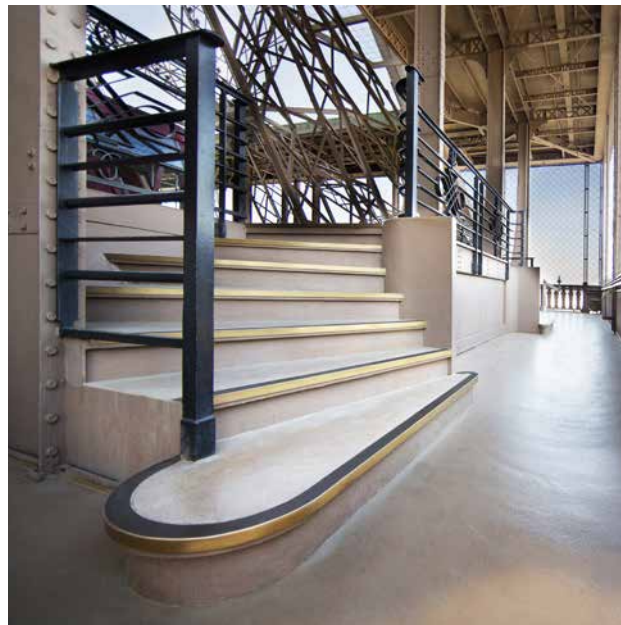
Curved Stair Edgings

- > Fastest, most reliable fabrication service in the UK
- > Ready for despatch within 5 working days*

Welded Corners

- > 83° and 90° welded corners are available in matching finishes

*Terms & Conditions apply - see www.gradus.com



Light Reflectance Values (LRVs) and NCS References

Metal Castellated

Colour Reference	LRV	NCS
Aluminium	74.21	4005-B80G
Brushed Stainless Steel	48.85	6020-G70Y
Satin Chrome	50.73	S7502-G
Polished Chrome	58.17	S9000-N
Black Anodised	4.35	8500N
Antique Brass	9.78	7005-Y20R
Antique Bronze	7.55	8005-R20B
Polished Bronze	66.86	4050-G40Y
Satin Bronze	59.60	2040-R20B

Project Rainbow and ADM recommend that there is at least a 30 point difference between the LRVs of the stair nosing and floorcovering to achieve a suitable contrast.

For further details contact Gradus Technical Support on 01625 428922.

Xtra-grip

Colour Reference	LRV	NCS
Onyx	4.52	8502-B
Neptune	5.03	8010-R70B
Baltic	8.00	6020-R90B
Aegean	7.02	6530-B30G
Forest	6.69	7020-B70G
Graphite	12.56	6502-B
Quarry	24.71	4500-N
Concrete	37.44	2502-B
Surf	43.58	1515-R90B
Bamboo	45.84	2005-B80G
Claret	5.70	6030-R10B
Chestnut	15.36	4050-Y70R
Umber	5.71	8005-Y50R
Sepia	27.71	5020-Y20R
Tuscan	34.86	3010-Y40R
Pumice	46.83	2005-Y30R
Ochre	49.97	1060-Y
Frost	66.51	1002-G50Y

Interior Standard Finish

Colour Reference	LRV	NCS
Jet	4.56	8502-B
Ink	4.96	8010-R70B
Ocean	8.00	6020-R90B
Teal	7.02	6530-B30G
Evergreen	6.69	7020-B70G
Lead	12.77	7005-R50B
Steel	26.99	4500-N
Glacier	42.09	2502-B
Wisp	58.17	2000-N
Sky	52.63	1515-R90B
Clay	47.97	2502-Y
Jade	53.98	2005-G
Burgundy	5.70	6030-R10B
Spice	15.36	4050-Y70R
Coffee	6.05	8010-Y50R
Bronze	27.71	5020-Y20R
Linen	38.59	3010-Y30R
Canvas	53.27	2005-Y30R
Buttercup	55.54	1070-Y
Snowdrift	83.77	0500-N

A Fusion of Products

Gerflor and Gradus offer products which are ideal for use in a wide variety of applications including hospitality & leisure, residential developments, retail and commercial office.



Luxury Vinyl Tiles & Planks (LVT)



LED Architectural Lighting



Barrier Matting Systems



GRADUS

Gradus Ltd Park Green Macclesfield Cheshire SK11 7LZ

For enquiries outside the UK and Eire contact Gradus International on +44 (0)1625 613780

Gradus International
England

Tel +44 (0) 1625 613780

Gradus Far East
Singapore

Tel: (+65) 6734 5933

call: 01625 428922
gradus.com