




Stainless Steel Solutions
for Building and Construction

A modern building with a glass facade and a perforated metal dome structure. The building is white with large glass windows. The sky is blue with white clouds. The text is overlaid on a purple background.

Aperam is a global leader in stainless steel solutions, offering a multitude of effective, innovative and environmentally friendly products - each tailored to meet our customers' expectations.

Aperam stainless: a stainless steel solution for every customer.

With the Uginox brand, we offer the market's most comprehensive and innovative range of surface finishes ready to meet a variety of expectations.

We are widely recognised by project managers, developers, architects and contractors for our long standing expertise in the construction sector.

We anticipate the new requirements of our end users and, thanks to our global presence, we support our customers with everything from technical assistance to product co-development.



City Hall, Illkirch Graffenstaden - France - Atelier Filippini © Atelier Filippini - Executed using grade 304L with Uginox Mat finish

Cover: PANEUM - Wunderkammer des Brotes, Asten - Austria - COOP HIMMELB(L)AU © Markus Pilhofer - Executed using grade 316L with Uginox Mat finish

06 Our services and stainless steels

08 Our surface finishes

10 Stainless steel choice criteria

12 Our solutions for construction systems in roofing

16 Our solutions for construction systems in facade

23 Our solutions for structures

24 Internal decoration

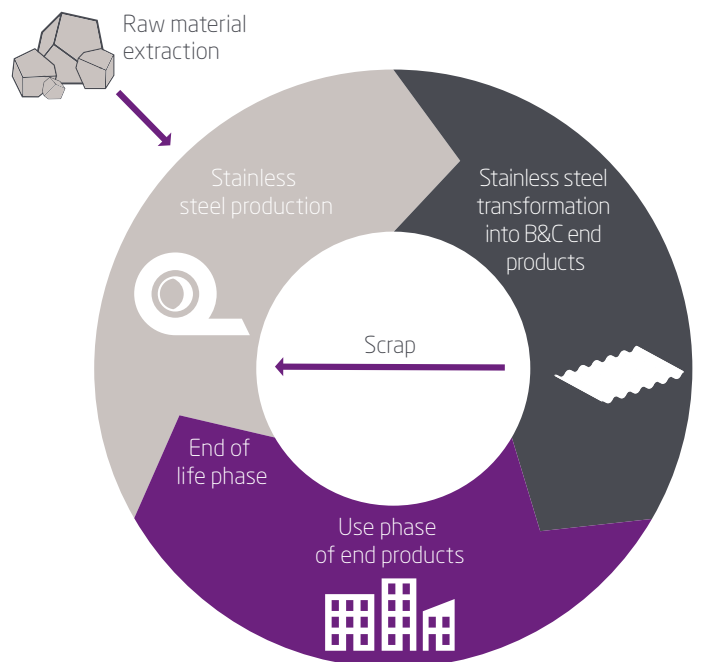
27 Contacts



Family Lodgings, Montreuil - France
archi 5 © Sergio Grazia
Executed using grade K36 with Uginox Bright finish

A 100% recyclable product

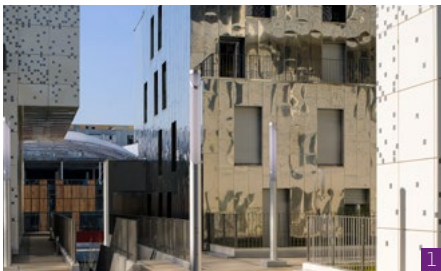
- > Stainless steel is the “green material” par excellence and is infinitely recyclable. Within the construction sector, its actual recovery rate is close to 100%.
- > It is environmentally neutral, inert and, when in contact with elements such as water, it does not leach compounds that might modify its composition. These qualities make it a material that is ideally suited to such building and construction applications as roofs, facades, rainwater recovery systems, domestic water pipes and swimming pools, as well as bridges and pedestrian bridges.
- > Stainless steel’s longevity fulfils the requirements of sustainable construction.
- > A suitable choice in terms of grade, surface finish, installation and maintenance guarantees the user an unrivalled service life.
- > Construction components made of stainless steel come ready to install, thus reducing pollution (noise, dust, etc.). Furthermore, during demolition, these components can be salvaged for re-use in recycling, thus adding even more value.





FRAC - The Rentilly Castle - France
 Bona-Lemerrier / Xavier Veilhan / Alexis Bertrand © Florian Kleinfenn
 Executed using grade 304 with Méca 7D finish

Stainless steel, the perfect combination of performance and aesthetics for your projects



1



2



3

Design

Our wide range of grades and surface finishes means you can choose a stainless steel that's right for your exact needs. All of our stainless steel options are corrosion resistant, meaning they can be adapted to any given atmospheric environment to provide your building with both continuity and sustainability.

Furthermore, our various stainless steels have excellent physical properties, even at very low temperatures. On the one hand, this allows you to use thinner pieces, providing for a lower weight per m² and, on the other hand, you can use very long pieces in single sections.

Our products are transformed and easily installed using traditional tools and machinery.

- 1 - Apartment building "Lyon Islands", Lyon - France - M. and D. Fuksas © Erick Salliet - Executed using grade 304 with Uginox Bright finish
 2 - Archives départementales du Nord, Lille - France - de Alzua+ / ZigZag Architecture © Sergio Grazia - Executed using grade 304 with Uginox Mat finish
 3 - Island Pavilion, Wormsley, United Kingdom - Robin Snell and Partners © Graham Everitt - View Pictures Ltd - Executed using grade 316L with Uginox Top finish

Economic performance

Designing a building with stainless steel also means cost efficiency - especially when you consider the final cost versus the longevity of the structure.

This is the result of stainless steel's exceptional durability and almost non-existent need for maintenance.

This price stability, especially with our ferritic grades, as well as the cost of transformation and installation, is comparable to other traditionally used metals, giving stainless steel a unique competitive advantage.

Aesthetics

Stainless steel gives architects a level of creative freedom in design that is rarely matched. Architects can choose from our impressive range of thicknesses and wide range of surface finishes - from the more dull to the colourful and even the most brilliant.

Stainless steel allows for the creation of complex shapes and pairs well with other materials such as glass, wood, stone, etc.

1. OUR SERVICES AND STAINLESS STEELS

At Aperam, our service doesn't stop with the sale. Each of our products is backed by our industry-leading commitment to service and support that last throughout your project.

Technical Partnership

The sustainability of our products is heavily dependent on how they are used. For example, a building's exposure and its surrounding environment will all impact the stainless steel. To ensure our customers get the most out of their product, our business engineers regularly advise owners, contractors and installation companies.

Our "Stainless Workshops" – operational workshops located at our Isbergues site – train your colleagues and operatives in the use of stainless steel. Our experts, located throughout Europe, provide training in schools of architecture and design, in high schools and vocational schools specialising in building and construction.

Product innovation

In addition to our highly competent and dedicated stainless steel research centre, Aperam Stainless Europe can also call upon the services of all of the Aperam Group's research facilities.

We are working in conjunction with material manufacturers to enhance the performance of our steels by combining them with other materials, such as glass.

Logistics

Our dedicated European logistics platform, located in Isbergues, ensures a service level adapted to your requirements.

Our stainless steel range for the building and construction sector is available from stock in standard formats or in made-to-measure products. A team of logistic experts dedicated to quality of service and on time delivery is at your disposal.

Proximity to our customers

Aperam Stainless Europe has the advantage of its expansive sales network – 16 Service Centres and sales offices throughout Europe, each of which offers quality service and proximity to those involved in the construction sector.

What is stainless steel?

Steel is an alloy of iron and carbon.

Stainless steels are steels containing less than 1.2% carbon and at least 10.5% chromium, along with other alloying elements.

The chromium content provides stainless steel with its corrosion resistance, enabling the natural and continuous development of a chromium oxide surface layer.

This oxide, referred to as the "passivation layer", provides the stainless steel with lasting protection against all types of corrosion. This passivation layer is naturally self-healing when in contact with humidity or water.

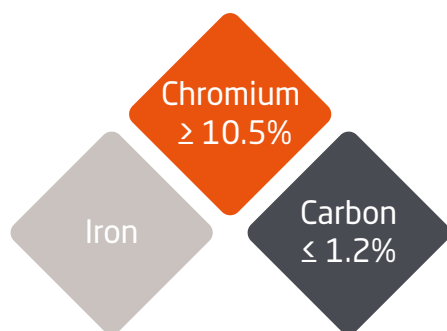
Stainless steels' corrosion resistance and mechanical properties can be further enhanced by adding other elements, such as nickel, molybdenum, titanium, niobium, manganese, etc.



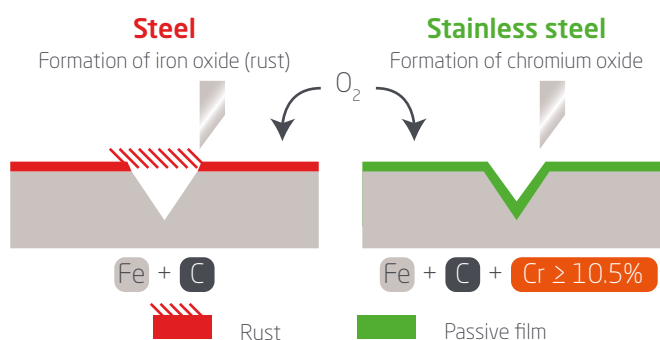
KARA is Aperam's brand of ferritic stainless steels. Unlike other stainless steels, the KARA range does not contain nickel and is thus immune from the erratic price fluctuations of this alloying element.

KARA's key advantage is that its prices are more stable over time: a strong argument in the construction sector, where project costs and economic design are key elements.

Composition of stainless steels

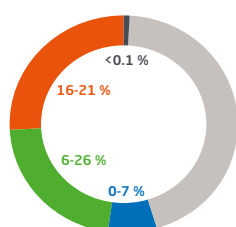


Reaction of steel and stainless steel in contact with air humidity or water

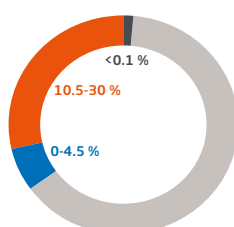


The various categories of stainless steel suitable for building

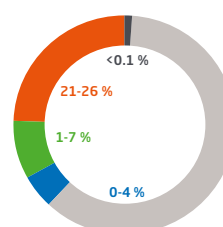
Austenitic S300



Ferritic S400: our KARA ferritic stainless steel solutions



Duplex



Iron Molybdenum, aluminium, copper Nickel Chromium Carbon

Stainless steel - the choice material

To guide your selection, this table compares the characteristics of the principle materials used in building, taking into account your constraints.

Properties (typical values)	304/304L	316L	K30	K36	K41	K44	DX2205	DX2304
Density	7.90	7.90	7.70	7.70	7.70	7.70	7.80	7.80
Expansion in mm/m per 100°C	1.60	1.60	1.10	1.10	1.10	1.08	1.30	1.30
Melting point in °C	1450	1440	1500	1480	1505	1495	1460	1465
Modulus of elasticity en MPa x 10 ³ (20°C)	200	220	220	220	220	220	200	200
Yield strength in MPa	300	300	330	370	310	380	620	550
Tensile strength in MPa	650	620	500	520	480	520	840	730
Thermal conductivity in W/m.K	15	15	25	30	25	23	16	17
Mean elongation in %	54	52	26	29	30	28	29	30

Properties (typical values)	Zinc Cu - Ti ⁽¹⁾	Copper DHP Cu-b1 1/4 dur ⁽¹⁾	Aluminium EN AW 5005 ⁽¹⁾	Carbon steel 1.0242 ⁽¹⁾
Density	7.18	8.93	2.70	7.70
Expansion in mm/m per 100°C	2.20	1.68	2.35	1.20
Melting point in °C	418	1083	660	1600
Modulus of elasticity en MPa x 10 ³ (20°C)	80	120	69	210
Yield strength in MPa	110/150	190	45	250
Tensile strength in MPa	150/190	260	120	330
Thermal conductivity in W/m.K	110	328	201	30
Mean elongation in %	40	25	27	19

⁽¹⁾ Reference of a type of zinc, copper, aluminium or carbon steel, traditionally used in building. These values are only an indication.



Arc Iris, Waste Reception Center, Perpignan - France
Architect: Luc Arsène-Henry Jr © Luc Arsène-Henry Jr
Executed using grade 316L with Uginox Top finish - Champagne colour

2. OUR SURFACE FINISHES

A wide choice of surface finishes

In order to meet the diverse needs of the many styles of architecture, we offer a comprehensive range of surface finishes, from matt to bright, that can be achieved on various grades of stainless steels. All that is required is to identify the grade of stainless steel and the surface finish.

The grade of stainless steel

Corresponds to a steel product characterised by its chemical composition. This composition has a direct influence on its resistance to corrosion and its mechanical properties.

Surface finishes

Surface finishes are the result of mechanical or physico-chemical treatment to the surface of the steel. Surface finishes can be reproduced on different grades of stainless steel.



Uginox Patina

Uginox Patina is a tin-plated stainless steel available in two grades of ferritic stainless steel: K41 (0.4 mm and 0.5 mm thick) and K44 (0.5 mm thick), the latter of which can meet even the most aggressive of all atmospheric conditions.

These are coated with tin by electroplating on both sides. Tin acquires a patina over time, giving it a living character and a matt grey appearance, which is particularly popular. Tin reduces the natural shine of stainless steel and facilitates its integration into any location.

In addition, Uginox K41 and K44 are easily soldered and can be worked with in winter temperatures.

Our recommendation

The surface finish Uginox Patina is suitable for standing seam, self supporting and cleated seam roofing, as well as for roofing accessories. However, we do not recommend the use of tinned stainless steel for vertical fascias or soffits where the desired aesthetic may be delayed due to a lack of natural rain washing.



Uginox Top

Matt finish
Applications: Roofing - Facade - Interior



Uginox Bright

Particularly bright and uniform surface with low roughness
Applications: Roofing - Facade - Interior



Uginox Sand

Sand blasted finish.
Applications: Facade - Interior
Please consult us



Uginox Mat

Slightly bright surface with low roughness
Applications: Roofing - Facade - Structure - Interior



Uginox Rolled-On

Fine polished look with the qualities of a rolled-on finish
Applications: Roofing - Facade - Interior



Uginox Leather

Leather look pattern
Applications: Facade - Interior



Uginox Linen

Linen patterned finish
Applications: Facade - Interior



Uginox Méca 8 ND[®]

Non-directional, super mirror polished finish
Applications: Facade - Interior



Uginox Squares

Chequer pattern finish
Applications: Facade - Interior



Uginox Coloured

A range of coloured stainless steels: gold, champagne, blue, bronze, black
Applications: Facade - Interior



Uginox Lozange

Lozange pattern finish
Applications: Facade - Interior

Our recommendation

It is important that the choice of surface finish be compatible with the environment. An identical grade with low roughness, like Uginox Bright, Uginox Mat and Uginox Méca 8 ND, are the finishes most resistant to corrosion because their low roughness means contaminants cannot easily attach themselves. For this reason, they are considered as "self cleaning". Our finishes are uniform and can be reproduced, especially those achieved by etching.

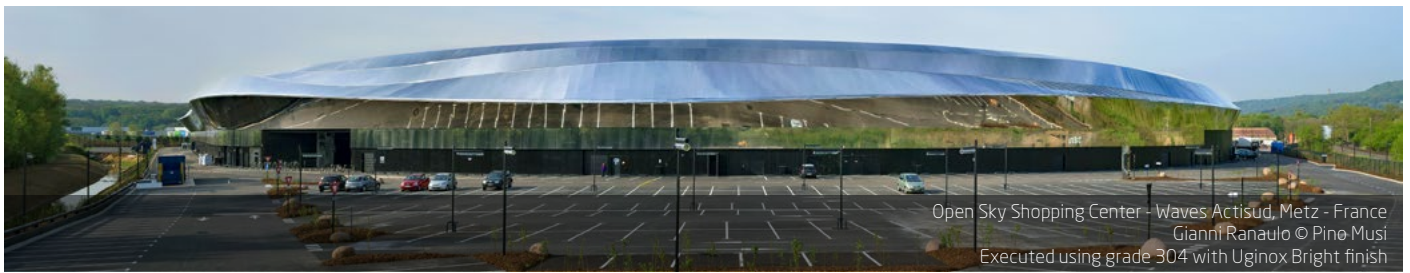


City Garden Hotel, Zug - Switzerland
 EM2N Architekten AG/ Ghislain Planen Bauen GmbH © MZ-IMMOBILIEN AG
 Executed using grade 304 with Méca 8 ND finish

3. STAINLESS STEEL CHOICE CRITERIA

Chemical composition

Commercial designations		Standards			Chemical composition in % (typical values)						
		ASTM		EN	C	Si	Mn	Cr	Mo	Ni	Other
		Designations									
		Type	UNS								
Austenitics	304	304	S30400	1.4301	0.05	0.40	1.10	18.20	-	8.05	-
	304L	304L	S30403	1.4307	0.025	0.40	1.40	18.20	-	8.05	-
	316L	316L	S31603	1.4404	0.025	0.40	1.20	16.80	2.10	10.10	-
Ferritics	K30	430	S43000	1.4016	0.04	0.35	0.30	16.50	-	-	-
	K36	436	S43600	1.4526	0.02	0.40	0.25	17.50	1.25	-	Nb = 0.50
	K41	441	S43932 S43940	1.4509	0.015	0.60	0.30	17.80	-	-	Ti + Nb = 0.65
	K44	444	S44400	1.4521	0.015	0.50	0.30	17.70	1.85	-	Ti + Nb = 0.45
Duplex	DX 2205	2205	S32205	1.4462	0.02	0.30	1.80	22.80	3.10	5.50	N = 0.17
	DX 2304	2304	S32304	1.4362	0.02	0.40	1.50	23	0.50	4.90	N = 0.10



Grade selection depends on atmospheric exposure

The choice of stainless steel grade must take into account the environment in which the material will be used. Our experts are available to help you in the selection process.

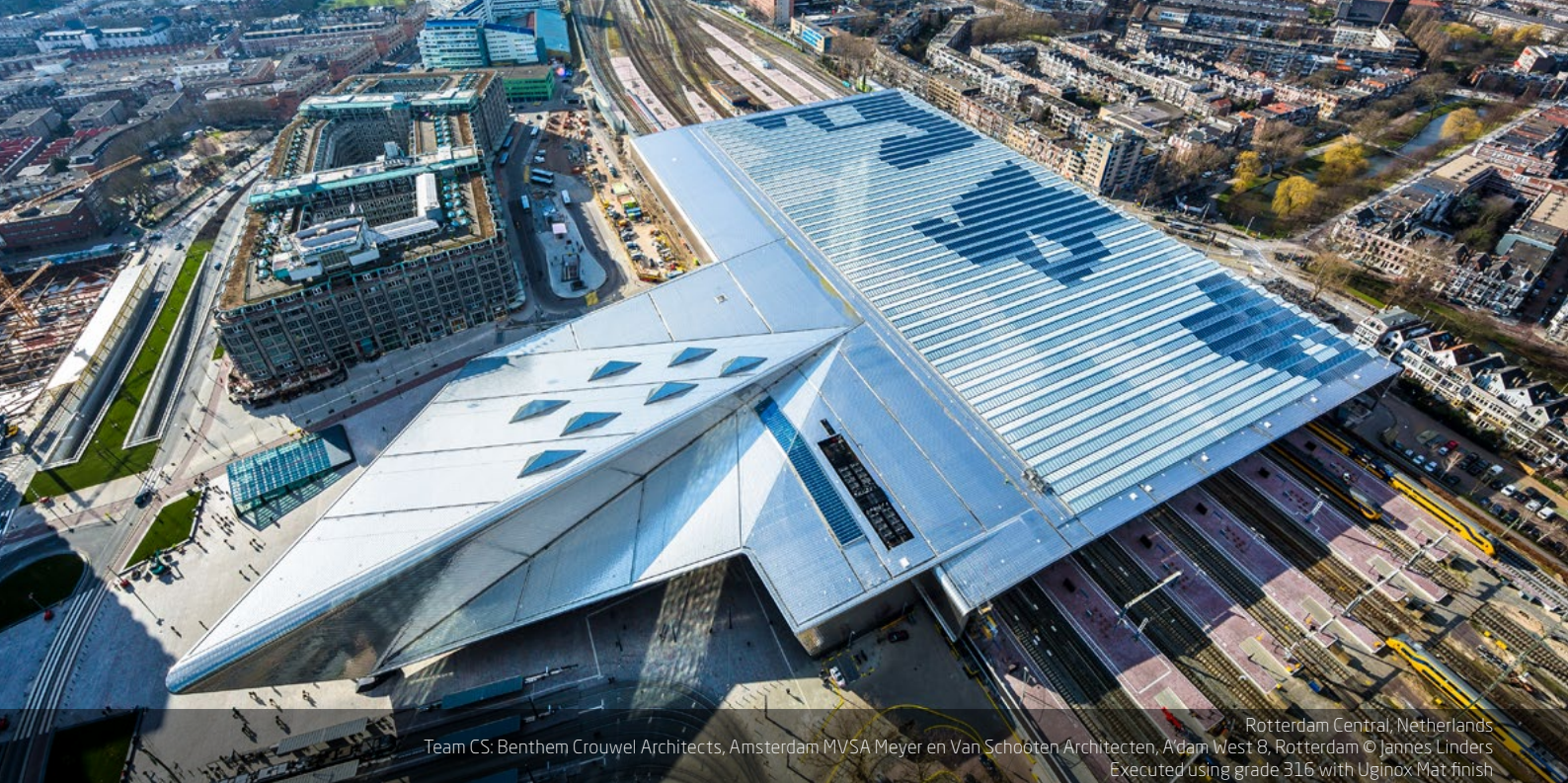
Commercial designations	Internal environment			External environment					
	Benign, all levels of relative humidity	Corrosive*	Unpolluted rural	Urban and industrial		Marine			
				Normal	Severe*	20 to 10 km	10 to 3 km	Coastal (<3 km)	
Austenitics	304/304L	✓	▲	✓	✓	▲	✓	✗	✗
	316L	✓	▲	✓	✓	▲	✓	▲	▲
Ferritics	K30	✓	✗	✗	✗	✗	✗	✗	✗
	K36	✓	▲	✓	✓	▲	✓	✗	✗
	K41	✓	▲	✓	✓	▲	▲	✗	✗
	K44	✓	▲	✓	✓	▲	✓	▲	▲
Duplex	DX 2205	✓	▲	✓	✓	▲	✓	▲	▲
	DX 2304	✓	▲	✓	✓	▲	✓	▲	▲

✓ Type suited to the environment.

▲ Type whose selection will be determined after consulting us.

✗ Type not suited to the environment.

*In particular, any environment or atmosphere containing corrosive substances or halogens: chlorides, fluorides, etc.



Rotterdam Central, Netherlands
Team CS: Bentheim Crouwel Architects, Amsterdam MVSA Meyer en Van Schooten Architecten, Adam West 8, Rotterdam © Jannes Linders
Executed using grade 316 with Uginox Mat finish

4. OUR SOLUTIONS FOR CONSTRUCTION SYSTEMS IN ROOFING

Affording freedom of form and appearance, stainless steel roofing blends into all environments and is suited to all styles of architecture, both new and renovation projects. Long lasting, easy to maintain and recyclable, it is also the sustainable material of choice. Our stainless steels are suited to the various construction systems presented below. For each technique, our experts are available to advise and guide you in your choice.

Stainless steel advantages

- Stainless offers a wide variety of shapes and finishes, perfectly adapted to all types of installation techniques (batten rolls, standing seams, self-supporting trays) and to both new and existing structures.
- Compared to other building materials, stainless steel distorts the least, enabling it to be used in long single pieces (from 1 to 20 meters depending on different national guidelines). Furthermore, the number of solders or expansion joints is reduced, allowing for quick installation whilst reducing the risk of leaks.
- Stainless steel's excellent mechanical resistance permits the use of thin gauges (0.4-0.5mm) for a considerable material gain.



Media library, La Madeleine - France
Tank © Julien Lanoo
Executed using grade 304L with Uginox Mat finish



Child care and health centre, Marcy l'Étoile - France
Y ARCHITECTES © Brice Robert
Executed using grade 304 with Uginox Top finish



Custom Home, La Jolla, San Diego - USA
Daniel Schmidt © Enduringmetal
Executed using grade K44 with Uginox Patina finish



St Barnabas Church, Edington - United Kingdom
Brownhill Hayward Brown © Terence Smith Photography
Executed with Uginox Patina and Uginox Top finishes



Lessingschule, Freiburg im Breisgau - Germany
Werner Sandhaus Architekten © Peter Rokosch
Executed using grade K41 with Uginox Patina finish



Professional school, Dingolfing - Germany
Schobner & Wagner Architekten © Aperam
Executed using grade 304 with Uginox Top finish



Les terrasses de Corseaux, Vevey - Switzerland
A&C Architecture+Consultant, Philippe Schumacher © A&C
Executed using grade K41 with Uginox Patina finish



Boghindu Farmhouse House extension - Boghindu, Aberdeenshire - United Kingdom
Room architects © N. Rigden
Executed using grade Aperam 304 with Uginox Top finish



Ben Wyvis School, Inverness - Highland Council - United Kingdom
 © Chris Humphreys Engineered
 Executed using grade 316L with Uginox Top finish

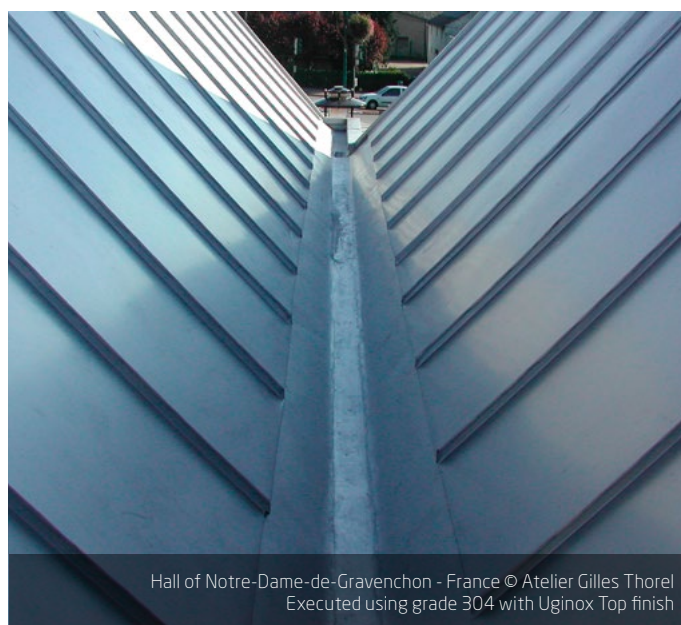
Collection and disposal of rain water

Roofing accessories are the ideal complement to a stainless steel roof.

Take rainwater collection, for example. Stainless steel enables the manufacturing of gutters and downpipes in welded sections or in continuous lengths of up to 20 m (according to the width). This reduces the number of soldered joints needed, thus enhancing the rain water collection system's integrity.

Stainless steel in thicknesses of 0.4 mm and 0.5 mm is easy to work, even in cold weather, and can be easily soldered in situ using tin solders.

Depending on component length, stainless steel can be folded in the workshop or on site using special tooling. The Uginox Patina and Uginox Top surface finishes are traditionally used for roofing accessories.



Hall of Notre-Dame-de-Gravenchon - France © Atelier Gilles Thorel
 Executed using grade 304 with Uginox Top finish



Kadampa Manjushri Buddhist Temple Ulverston, Cumbria - United Kingdom
 Mark Tole © Aperam
 Executed with Uginox Patina finish



Campus des Métiers et de l'Entreprise, Bobigny - France
 Bruno Gaudin © Gaston François Bergeret
 Executed using grade K36 with Uginox Bright finish



Refuge du Goûter, Saint Gervais - France
 Groupe H & Déca-Laage © Pascal Tournaire
 Executed using grade 304 with Uginox Top finish

Roofing in mountainous regions

In mountainous regions, projects must take into account the range of surface temperatures, localised or distributed snow loads, the erosion caused by snow and ice movement and the risk of siphoning.

Our stainless steels are ideally suited to this type of climate as they offer:

- > Excellent resistance to thermal shock.
- > No embrittlement in very cold weather.
- > Excellent mechanical strength, capable of withstanding heavy snow loads.

The standing seam roofing system is particularly well-suited for mountain buildings. The stable durability of stainless steel limits the number of transversal seams and weldings needed, which limits the risk of leaks and thus increases durability of your building projects.

The self-supporting roof system with a preformed stainless steel tray system is becoming an increasingly popular choice. This is both because its ease-of-use and installation make it a practical choice, and because its low cost per m² make it a smart economic choice.



Tracuihütte, Zinal/VS - Switzerland
 Savioz Fabrizzi © Thomas Jantscher
 Executed using grade K36 with Uginox Bright finish



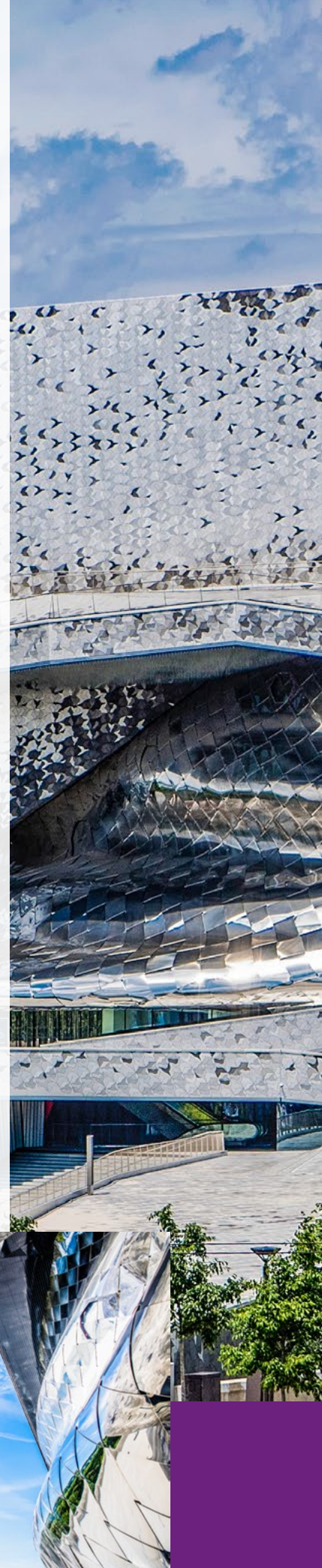
Multi-purpose hall, La Bresse - France
 SAS Carignies Canonica © Aperam
 Executed using grade K41 with Uginox Patina finish

5. OUR SOLUTIONS FOR CONSTRUCTION SYSTEMS IN FACADES

Our range of available thicknesses for each type of surface finish makes stainless steel the ideal choice for roofing and cladding.

The advantages of stainless steel

- > Lighter envelope, thanks to high mechanical properties that permit a reduction of thickness.
- > Compatible with all types of support: metal, all types of wood, etc.
- > Possible association with construction systems giving thermal properties and/or acoustics.
- > Response to national and European thermal regulatory requirements.
- > More cost-effective than traditional products and techniques.
- > All types of claddings are possible, both new and refurbished.
- > In refurbishment, the stainless steel envelope transforms and modernises the building while respecting thermal regulations and omitting thermal bridges.



Philharmonie de Paris - France
Ateliers Jean Nouvel, Metra & Associés © William Beaucardet
Executed using grade 316L with Uginox Bright finish





CFA, Brétigny - France
 Archi 5 © Sergio Grazia
 Executed using grade 304 with Uginox Bright finish



Innovation Centre, Derby - United Kingdom
 Franklin Ellis Architects © Franklin Ellis Architects
 Executed using grade 316L with Uginox Top finish



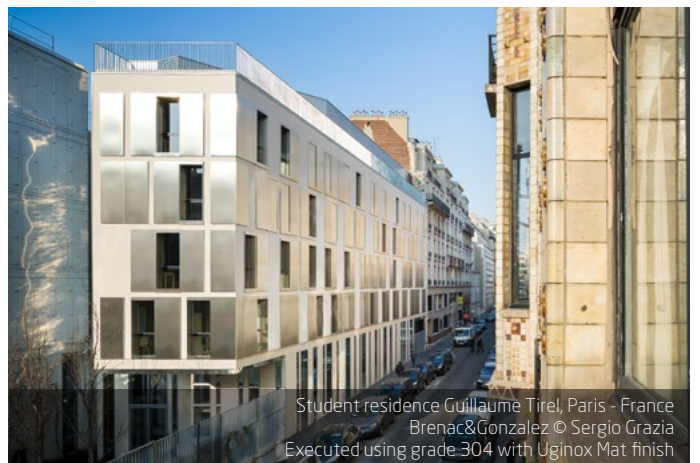
Cap City, Rives de Seine - France
 ppa architectures, Xavier Lepplaé architecte © Philippe Ruault
 Executed using grade 304L with Uginox Bright finish



Residential building, Nantes - France
 Christophe Rousselle © Takuji Shimmura
 Executed using grade 304 with Uginox Bright



Residential building and kindergarten, Nantes - France
 Philippe Dubus © Sergio Grazia
 Executed using grade 304L with Uginox Bright finish



Student residence Guillaume Tirel, Paris - France
 Brenac&Gonzalez © Sergio Grazia
 Executed using grade 304 with Uginox Mat finish



Congress and music hall, Strasbourg - France
Rey-Lucquet et associés Atelier d'Architecture / Dietrich I Untertrifaller Architekten © Bruno Klomfar
Executed using grade 304L with Uginox Brushed finish



CTLES extension, Bussy-Saint-Georges - France
Antonini + Darmon © Pierre L'Excellent
Executed using grade 304L with Uginox Bright finish





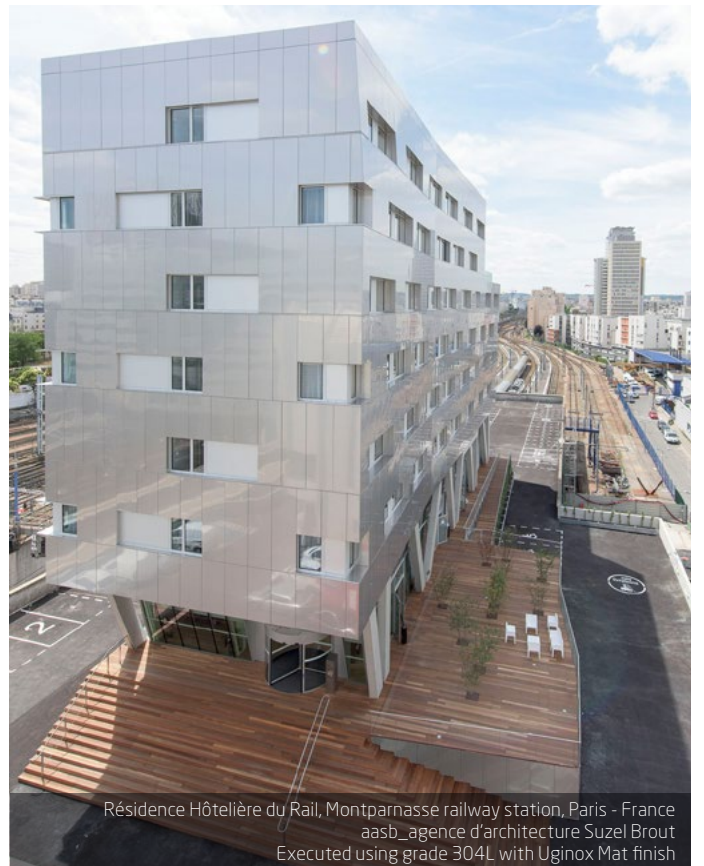
Media library, Isbergues - France
 Dominique Coulon © D. Coulon
 Executed using grade 304L with Uginox Bright / Top / Mat finishes and K41 Patina



School building Les Bartelottes, La Ville du Bois - France
 Nomade architectes © P.H.Müller
 Executed using grade 304L with Uginox Bright finish



University Library, Villetaneuse - France
 Bernard Ropa © Luc Boegly
 Executed using grade 304L with Uginox Bright finish



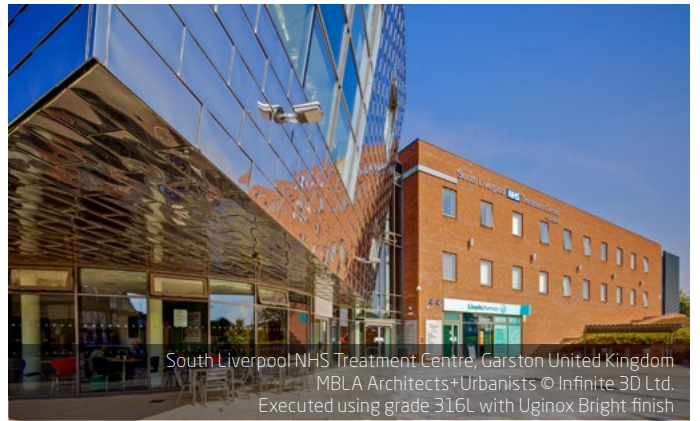
Résidence Hôtelière du Rail, Montparnasse railway station, Paris - France
 aasb_agence d'architecture Suzel Brout
 Executed using grade 304L with Uginox Mat finish



Anne de Bretagne School, Saint-Herblain - France
 Philippe Gazeau © Philippe Ruault
 Executed using grade 304L with Uginox Bright finish



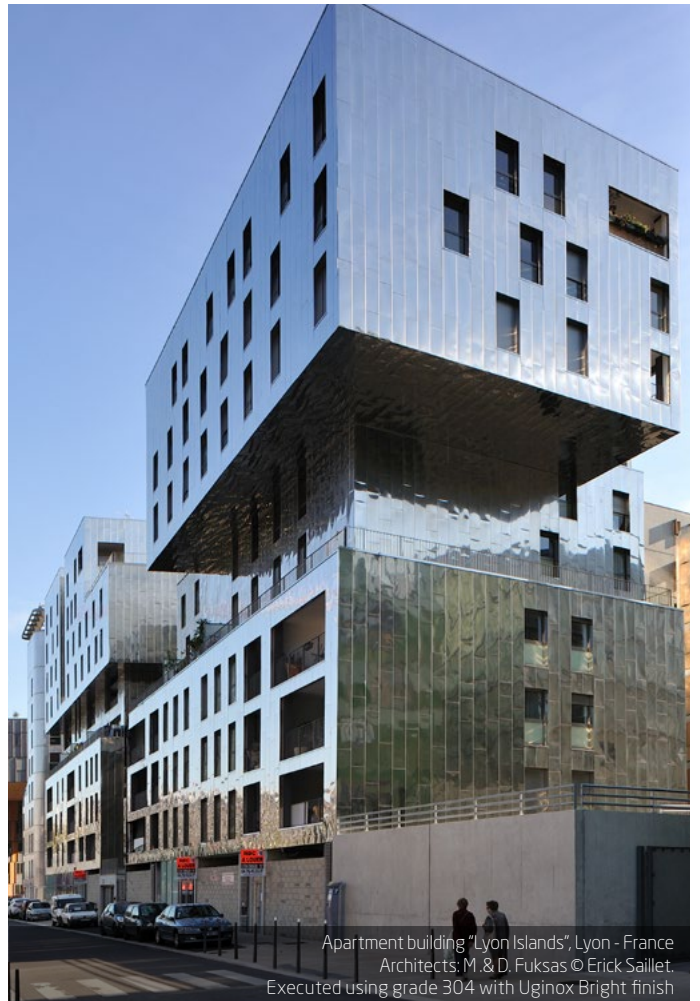
Aperam Gueugnon, new bright annealing RB8 line - France
© Aperam
Executed using grade 304 with Uginox Bright finish



South Liverpool NHS Treatment Centre, Garston United Kingdom
MBLA Architects+Urbanists © Infinite 3D Ltd.
Executed using grade 316L with Uginox Bright finish



Centre de formation des apprentis hôteliers (CFA), Metz - France
Bernard Ropa © Luc Boegly
Executed using grade 304 with Uginox Bright finish



Apartment building "Lyon Islands", Lyon - France
Architects: M. & D. Fuskas © Erick Sailet.
Executed using grade 304 with Uginox Bright finish



Residential building Nova ZAC Étoile, Strasbourg - France
TOA © TOA
Executed using grade 304 with Uginox Bright finish



Glasgow Fort - United Kingdom
Cooper Cromar Architect © Aperam
Executed using grade 304 with Uginox Mat finish

6. STRUCTURES

Swimming pools

Today, our range of stainless steels cover all requirements relating to swimming pool applications: pools (including pool edges, overflow gutters, partitions, etc.), ladders, diving boards and starting platforms, along with the water distribution system.

The grades employed are principally austenitic (304, 316L). For certain applications in harsher environments, such as the thermal spa, one can employ grades with even higher properties, such as duplex (DX2205, DX2304).



The advantages of stainless steel

- > Stainless steel is a durable material whose appearance does not deteriorate. It is also simple to maintain.
- > Stainless steel withstands variations in operating temperature typical for this type of application.
- > Unlike tiled pools, with stainless steel there is no risk of water leaking.
- > The surface properties of stainless steel plates and the assembly style of the different pieces limit the risk of bacterial growth.
- > A very effective alternative to the traditional solution. Although the capital costs may be higher, operating costs are lower. Over the facility's full lifespan, the return on investment is attractive.

Bridges and pedestrian bridges

Stainless steel can be found in all or any part of a bridge or a pedestrian bridge. Its use is common in elements of protection - handrails and banisters - as well as in the wires on suspension bridges, cables and tie rods. It is also recommended for the deck and for anchor elements, including those built in marine and polluted atmospheres, the austenitic (304, 316L) or duplex (DX2205, DX2304) grades may be well-suited.

The advantages of stainless steel

- > Corrosion resistant, with a very good mechanical resistance.
- > Choosing stainless steel not only guarantees the quality of the structure, it also gives it the aesthetics of a work of art.
- > Characteristics meet the strictest technical requirements: long range, lighter structures and seismic performance.
- > Can be used bare, even in very aggressive environments such as seashores or industrial areas.
- > Young's modulus on density allows us to balance between lightness and rigidity and thus create fine and sleek structures.
- > The benefits associated with the use of this material are also often the source of savings, which ultimately puts the cost into perspective.





Banque de France, Visitor spaces - Paris - France
 Moatti Rivière © Michel Denancé
 Executed using grade 304 with Méca 8 ND

7. INTERIOR DECORATION

Stainless steel applications are numerous, the only limitation is the imagination of the user.

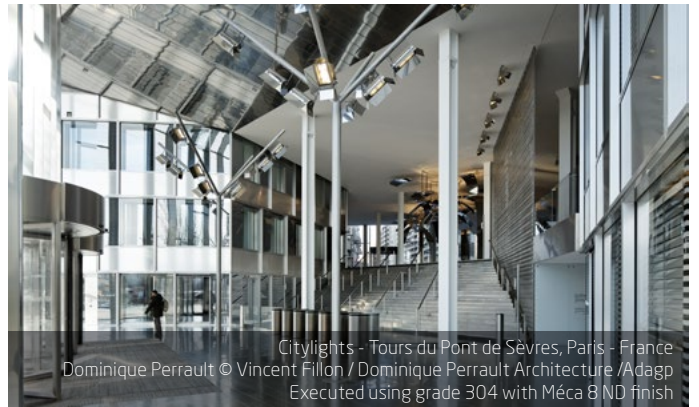
- > Interior decoration: elevators, metal furniture, store fixtures, decorative stands, bars, bank counters, entrances, collective kitchen furniture, etc.
- > Urban furniture, signs, monuments, etc.
- > Industrial screen printing, signs, corporate logos, etc.



CTLES extension, Bussy-Saint-Georges - France
 Antonini + Darmon © Pierre L'Excellent
 Executed using grade 304L with Uginox Bright finish



International Memorial of Notre Dame de Lorette - France
 Philippe Prost / AAPP © adagp - 2014 / Stainless steel transformer: Citynox / © Aitor Ortiz
 Executed using grade 316L - Bronze colour





Musée des Confluences, Lyon - France
COOP HIMMELB(L)AU © Sergio Pirrone
Executed using grade 316L - microblasted finish

Aperam Stainless Europe

A tailor-made stainless steel solution for every customer

Ensuring proximity and availability to meet your needs is one of our commitments.

Through our European network of service centres and sales offices, you benefit from both the might of a large organisation and the responsiveness of a local unit matched to organisations of all scales.

Ready to start working on a tailor-made solution backed by an industry-leading commitment to long-term support? Contact one of our experts today to confirm your choice of stainless steel.

DISCLAIMER

"This document is for information only and seeks to provide professionals with the best possible information to enable them to make appropriate choices. However, product range development may render all or part of this document obsolete. Our company's sales and technical personnel are at your disposal to provide further information. This document does not constitute a recommendation or a contractual commitment on the part of our company.

Aperam reserves the right to change its products at any time in light of technical advances. Product selection is the responsibility of the specifiers, designers and builders, who are solely responsible for rendering the finished unit suitable for the use for which it is intended. It is the customer's sole responsibility to ensure that the product is suitable for the use for which it is intended; unless specifically agreed to the contrary, Aperam is unable to provide any guarantee in this respect.

Any technical assistance provided by Aperam corresponds to the duty to provide advice and information that is incumbent upon any manufacturer mindful of the correct use of its products but shall not render Aperam co-designer or co-constructor of the unit in which its products are used".



Middle East Training Center, Beirut Rafic Hariri International Airport, Lebanon - Khatib & Alami - Næggiar
Executed using grade316L with Uginox Méca 8ND finish

CONTACTS

Austria

Aperam
Services & Solutions Austria
Traunferstr. 110a
A - 4052 Ansfelden
Tel.: +43 7229 8292 0
Fax: +43 7229 8292 013

Benelux

Aperam
Services & Solutions Benelux
Bosdel 87 - Genk Zuid
zone 5 BE - 3600 Genk
Tel.: +32 89 36 56 00
Fax: +32 89 36 56 02

Czech Republic & Slovakia

Aperam
Services & Solutions Czech
Republic Slezská 13
CZ - 120 00 Praha 2
Tel.: +420 2 210 01 602
Fax: +420 2 210 01 605

France

Aperam
Services & Solutions France
Rue Pierre Loti
FR - 62330 Isbergues
Tel.: +33 3 21 63 55 80
Fax: +33 3 21 63 58 59

Germany

Aperam
Services & Solutions Germany
Dieselstraße 5
DE - 74372 Sersheim
Tel.: +49 7042 8310 34
Fax: +49 7042 8310 73

Hungary

Aperam
Services & Solutions Hungary
Varosmajor u. 13.
HU - 1122 Budapest
Tel.: +36 122 52 480
Fax: +36 122 52 481

Italy

Aperam
Services & Solutions Italy
Località Piora, 4,
IT - 26815 Massalengo (LO)
Tel.: +39 0371 490 410
Fax: +39 0371 490 440

Poland

Aperam
Services & Solutions Poland
ul. Henryka Krupanka 97
PL - 41-103 Siemianowice
Slaskie
Tel.: +48 32 76 36 124
Fax: +48 32 76 36 139

Russia

Aperam
Services & Solutions
2nd Zvenigorodskaya,
13, Stroenie 41, 7th floor
123022 Moscow
Tel.: +7 499 370 00 55 (108)
Fax: +7 499 370 00 55 (107)

Scandinavia

Aperam
Services & Solutions Nordic
AB Sigurdsgatan 21, 8 vån
SE-721 30 Västerås
Tel.: +46 16 15 85 01
Fax: +46 16 15 85 19

Spain/Portugal

Aperam
Services & Solutions Iberica
Pol. Ind. Can Calderon
C/Torrent Fondo, 7
ES - 08840 Viladecans
Tel.: +34 93 425 97 00
Fax: +34 93 425 97 33

Switzerland

Aperam
Services & Solutions
Switzerland
Industriestrasse 19
CH - 8112 Otelfingen
Tel.: +41 44 851 56 56
Fax: +41 44 851 56 57

Turkey

Aperam
Services & Solutions Turkey
G.O.S.B. Ihsan Dede caddesi
700 Sok.No: 120
TR- 41480 Gebze-Kocaeli
Tel.: +90 262 751 29 14
Fax: +90 262 751 29 23

United Kingdom

Aperam
Services & Solutions UK
9 Midland Way
Barlborough
GB - Chesterfield - S43 4XA
Tel.: +44 1246 5716 60
Fax: +44 1246 5716 61

Canada

Aperam
Services & Solutions Canada
1005 Skyview Drive,
Suite 100 Burlington,
Ontario, L7P 5B1
Tel.: +1289 313 2004
Fax: +1905 336 0419

United States

Aperam
Services & Solutions USA
98 Floral Avenue
New providence, NJ 07974
Tel.: +1908 988 0625
Fax: +1908 988 0664

Other countries and rest of the world

uginox@aperam.com

Coloured products and special finishes

Aperam
Services & Solutions France
5, rue de la Roche Grolleau
BP 40 020
FR - 86600 Lusignan
Tel.: +33 5 49 89 30 77
Fax: +33 5 49 43 25 19



made for life

© 2020, Aperam Stainless Europe. While every care has been taken to ensure that the information contained in this publication is as accurate as possible, Aperam Stainless Europe cannot guarantee that it is complete or that it is free from error. KARA®, UGINOX® are brands of Aperam Stainless Europe, registered in numerous countries. Photo credits: Aperam photo library, Albert zekri



Contact

www.uginox.com
uginox@aperam.com



YouTube

