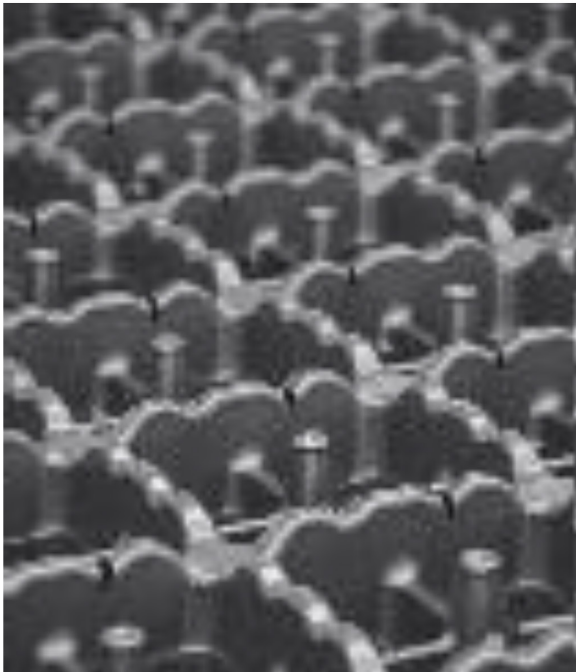


# Med0 D80 LOW Reservoir/Drainage Board

## Product Data Sheet



# Med0

## D80 LOW Reservoir/Drainage Board

### General Information

**Radmat D80 LOW** is a water storage element for intensive green roofing, underground garages and parking levels. It can also be used to form the base of planters. D80 LOW can be used for drainage below temporary car accessible green areas such as parking places or fire lanes. In Intensive green roofs D80 LOW provides a versatile solution to support with trees, shrubs, perennials or herb life. Manufactured from high impact recycled polystyrene D80 LOW guarantees the drainage according to DIN 4095 with a filling volume up to 35 l/m<sup>2</sup> and a water storage capacity of 30.5 l/m<sup>2</sup>.

Use with D80 Aggregate Infill when using for drainage under vehicle accessible areas, beneath planters and under paving. D80 LOW is chemically neutral, rotproof and resistant to mould and bacteria. The large diffusion slots in the division bars allow for a long-term aeration without hindrance and improve the microbiological conditions for the plants.

Suitable for zero pitch inverted roofs.

For a comprehensive NBS J31 specification contact Radmat Building Products.

### Delivery conditions

**Delivery Form** - Board.

**Storage and transport** - Delivered flat on a pallet, store flat.

### PRODUCT DIMENSIONS

Subject	Unit	D80 LOW
Length	m	1.94
Width	m	0.94
m <sup>2</sup> /board	m <sup>2</sup>	1.82
Weight/board	kg	4.01

For further information on Radmat products and services please call 01858 410372, email [techenquiries@radmat.com](mailto:techenquiries@radmat.com) or visit our website [www.radmat.com](http://www.radmat.com)

JUNE 22

# Med0

## D80 LOW Reservoir/Drainage Board

### DECLARED PERFORMANCE

Essential characteristics	Units	D80 LOW	According to
Raw Material	-	Recycled Polystyrene	-
Weight	g/m <sup>2</sup>	2200	-
Colour	-	Black	-
Height	mm	60	-
Crush Resistance (unfilled)	kN/m <sup>2</sup>	122	EN ISO 25619-2 06.2009
Crush Resistance with Infill on 21.6 % strain	kN/m <sup>2</sup>	1316	EN ISO 25619-2 06.2009
Water storage capacity (unfilled)	l/m <sup>2</sup>	30.5	-
Filling Volume	l/m <sup>2</sup>	35	-
Drainage Capacity at 20 kPa Load	i = 1.00 i = 0.02 i = 0.05	l/ms l/ms l/ms	16.00 2.06 3.34
Fire Protection Classification	-	E	EN 13501-1

This information given in good faith and is based on the latest knowledge available to Radmat Building products Ltd. Whilst every effort has been made to ensure that the contents of the publication are current while going to press, customers are advised that products, techniques and codes of practice are under constant review and liable to change without notice.

For further information on Radmat products and services please call **01858 410372**, email [techenquiries@radmat.com](mailto:techenquiries@radmat.com) or visit our website [www.radmat.com](http://www.radmat.com)

**JUNE 22**