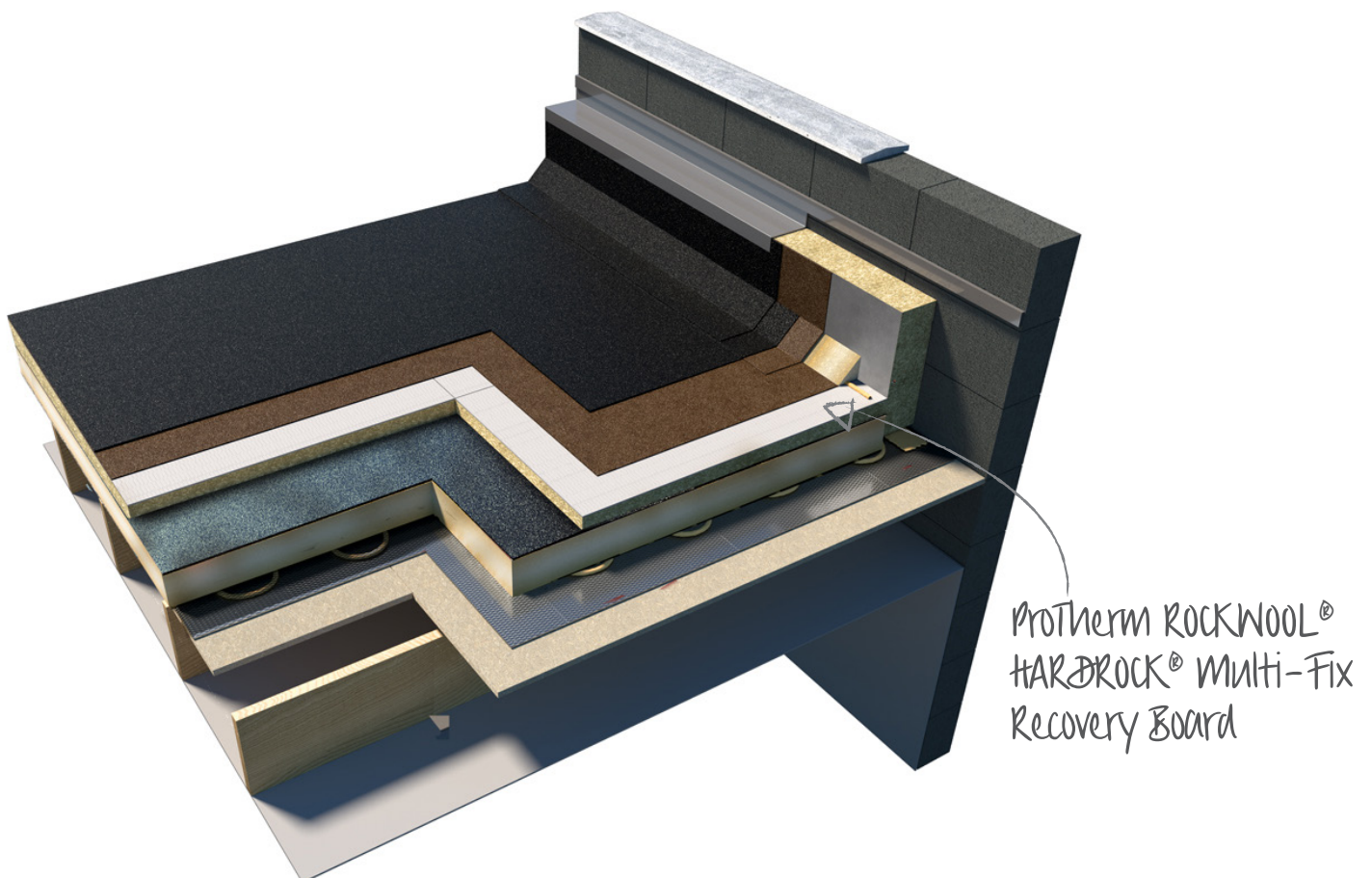


ProTherm ROCKWOOL[®] HARDROCK[®] Multi-Fix Recovery Board

Product Data Sheet



ProTherm ROCKWOOL® HARDROCK® Multi-Fix Recovery Board

General Information

ProTherm ROCKWOOL® HARDROCK® Multi-Fix Recovery Board is specifically developed for use on flat roof refurbishment projects.

HARDROCK® Multi-Fix Recovery Board is ideal for both domestic and commercial refurbishment, in addition to up-stand details, and can be installed directly over the in-situ roof membrane easily handling any minor imperfections on the existing external finish.

HARDROCK® Multi-Fix Recovery Board is manufactured with an integral mineral coated glass fibre fleece, which for adhered membranes, secures a strong bond between membrane and insulation whilst limiting the amount of adhesive required.

HARDROCK® Multi-Fix Recovery Board is compatible with all commonly used flat roof membranes including:

- Single-Ply & EPDM
- Bitumen membranes
- Liquid membrane systems

Advantages

- Can be installed directly over the in-situ roof membrane
- Will accommodate minor imperfections on the existing external finish
- Can be adhesively applied or mechanically fixed
- Excellent heat resistance, ideal for torch applied bitumen systems
- A single solution that is compatible with most roof coverings
- Reduces external noise ingress
- CE Marked

Applications

HARDROCK® Multi-Fix Recovery Board is suited to:

- Domestic refurbishment
- Commercial refurbishment
- Upstand details

HARDROCK® Multi-Fix Recovery Boards are completely fire safe and can be used to provide an effective acoustic barrier to external noise pollution.

ProTherm ROCKWOOL® HARDROCK® Multi-Fix Recovery Board

Acoustic Performance

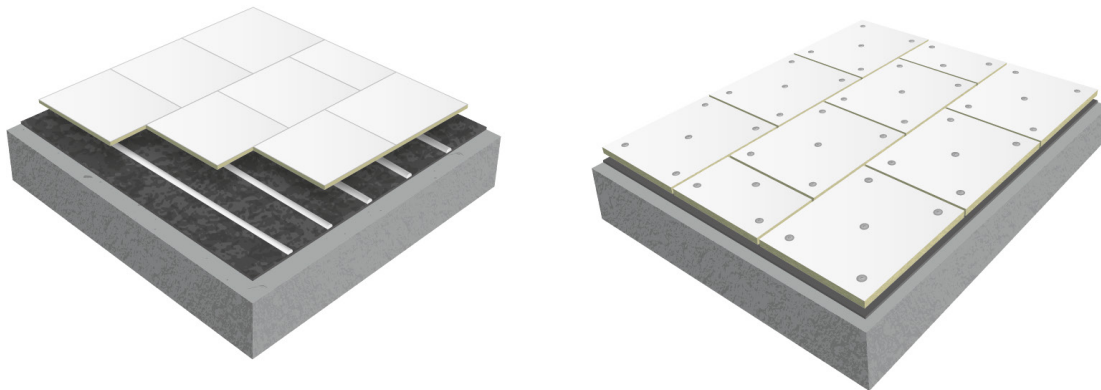
When tested in accordance with BS EN ISO 10140-2:2010 as an individual 30mm layer within a single ply flat roof system, onto a 0.7mm profiled steel deck, the system performance achieved ***Rw 33 dB. HARDROCK® Multi-Fix Recovery Board is the ideal solution for flat roof refurbishment on schools and supports the current acoustic refurbishment standards as listed in Table 1 of the Building Bulletin 93 document, "Acoustic Design of Schools: Performance Standards."

Installation

Warm roofs and cold ventilated roofs

HARDROCK® Multi-Fix Recovery Board has been specifically developed for use on flat roof refurbishment projects.

- Remove any loose debris.
- Mechanically fix or bond HARDROCK® Multi-Fix Recovery Board through/to the existing roofing membrane and/or insulation, into the roof deck, always ensuring that the existing deck is in a reasonable condition. A compatible adhesive must be used for bonding the insulation to the existing surfaces.
- 4N° fixings per m² are required (5N° per board) for all bonded and torch applied membranes (see recommended installation section containing fixing pattern, below).
- For all applications the boards should be laid in a staggered pattern with the mineral fleece facing upwards.
- Apply the new membrane to HARDROCK® Multi-Fix Recovery Board (see fixing guidelines overleaf).
- The existing cross ventilation of cold roof systems must always be maintained.



ROCKWOOL recommend the use of a plastic tube washer, or stress plate support thread when mechanically fastening roof boards to metal, concrete or timber deck warm roof systems. A stress plate and fastener fixings are required for ventilated timber deck cold roof systems.

ProTherm ROCKWOOL®

HARDROCK® Multi-Fix Recovery Board

DECLARED PERFORMANCE

Upper surface	Mineral-coated fibre tissue
Core	Stonewool
Lower surface	No facing
Thermal conductivity	value = 0.039 W/mK
Fire classification	Euroclass A2-s1,d0
Water vapour resistance	5.9MNs/g
Compliance	BS EN13163, ISO 14001
Thickness	30 mm*
Width	1000 mm
Length	1200 mm
Weight (gross/net)	6.340 kg
Packs per pallet	40
m ² per pallet	48
m ² per pack	1.2 m ² per board

This information given in good faith and is based on the latest knowledge available to Radmat Building products Ltd. Whilst every effort has been made to ensure that the contents of the publication are current while going to press, customers are advised that products, techniques and codes of practice are under constant review and liable to change without notice.

For further information on Radmat products and services please call **01858 410372**, email tech enquiries@radmat.com or visit our website www.radmat.com

MAY 23